


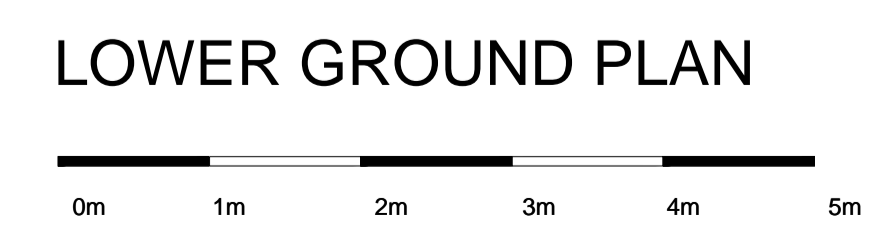
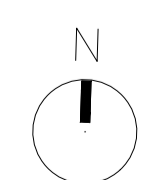
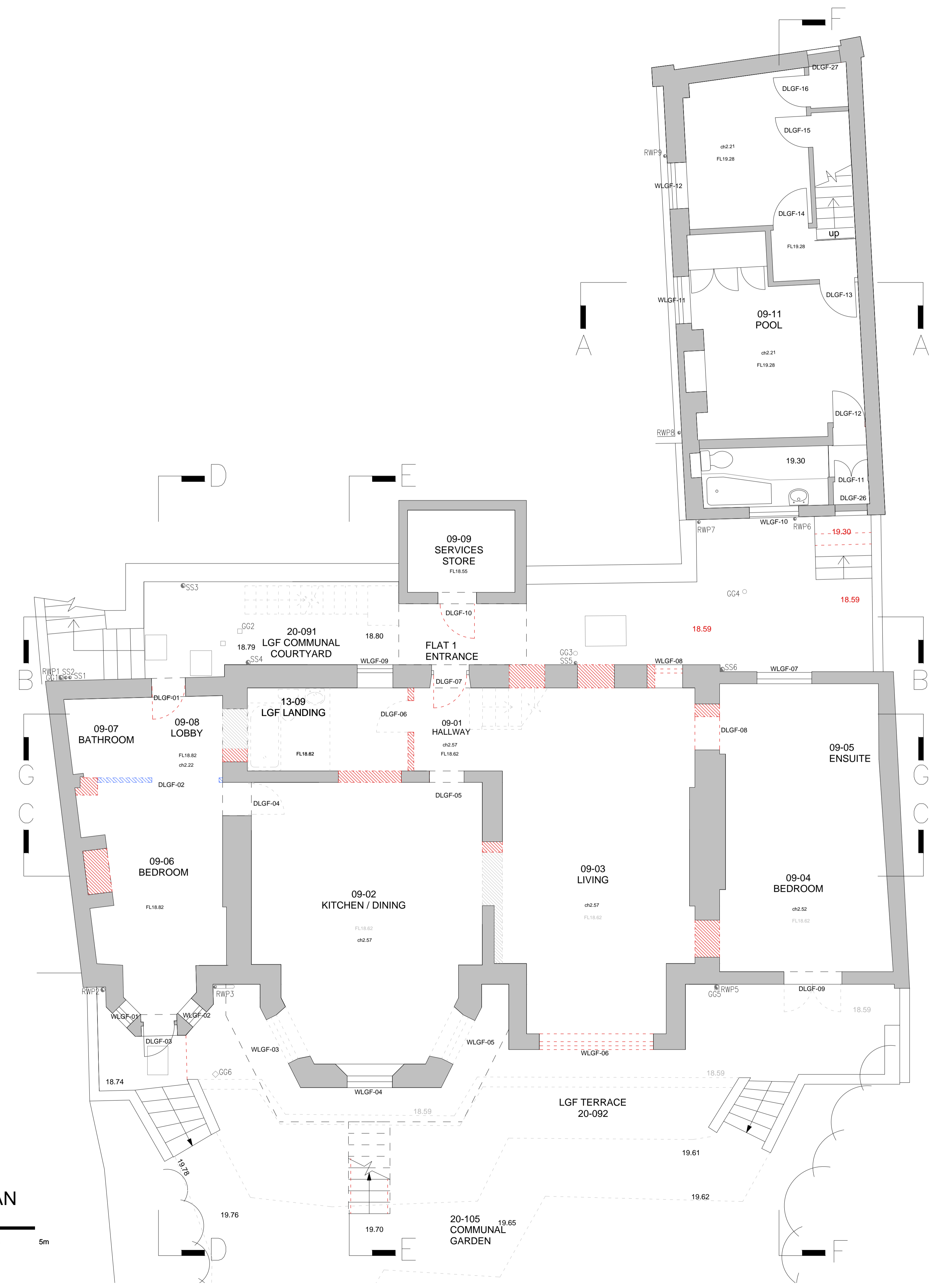


DO NOT SCALE FROM THIS DRAWING
 DRAWING TO BE READ IN CONJUNCTION WITH ALL OTHER ARCHITECTS AND ENGINEER'S CONTRACT DRAWING & SPECIFICATIONS. ANY DISCREPANCIES MUST BE BROUGHT TO THE ATTENTION OF THE ARCHITECT IMMEDIATELY.
 THE CONTRACTOR MUST VERIFY ALL DIMENSIONS BY SITE MEASUREMENT BEFORE ORDERING MATERIALS OR MANUFACTURING COMPONENTS.
 SUBSTITUTE MATERIALS & PRODUCTS TO THOSE NAMED WILL BE ACCEPTABLE IF PROVEN TO BE OF EQUAL OR HIGHER PERFORMANCE AND NOT IN CONFLICT WITH OTHER ELEMENTS.

NOTES
KEY:

-  Consented Demolition associated with Application ref: 2013/5112/L & 2014/7932/P
-  Regularisation
-  Proposed demolition

Note:
 For windows and doors please refer to schedules.



REV	DATE	DESCRIPTION
A	06.05.16	General updates
B	18.11.16	For Planning
C	08.12.16	For Planning
D	28.02.17	For Planning

FOR PLANNING

JOB TITLE
 Keats Grove
 Hampstead

DRAWING TITLE
 Lower Ground Floor Plan
 Proposed Demolition

JOB No	DWG No	REV
546	D01	D
DRAWN BY	SCALE (AT A1)	DATE
RFB	1:50 (1:100@A3)	Mar16

RICHARD GRIFFITHS ARCHITECTS
 5 Maidstone Mews, 72-76 Borough High Street, London SE1 1GN
 T +44(0)20 7357 8788 | F +44(0)20 7403 7887
 E admin@rgarchitects.com | www.rgarchitects.com