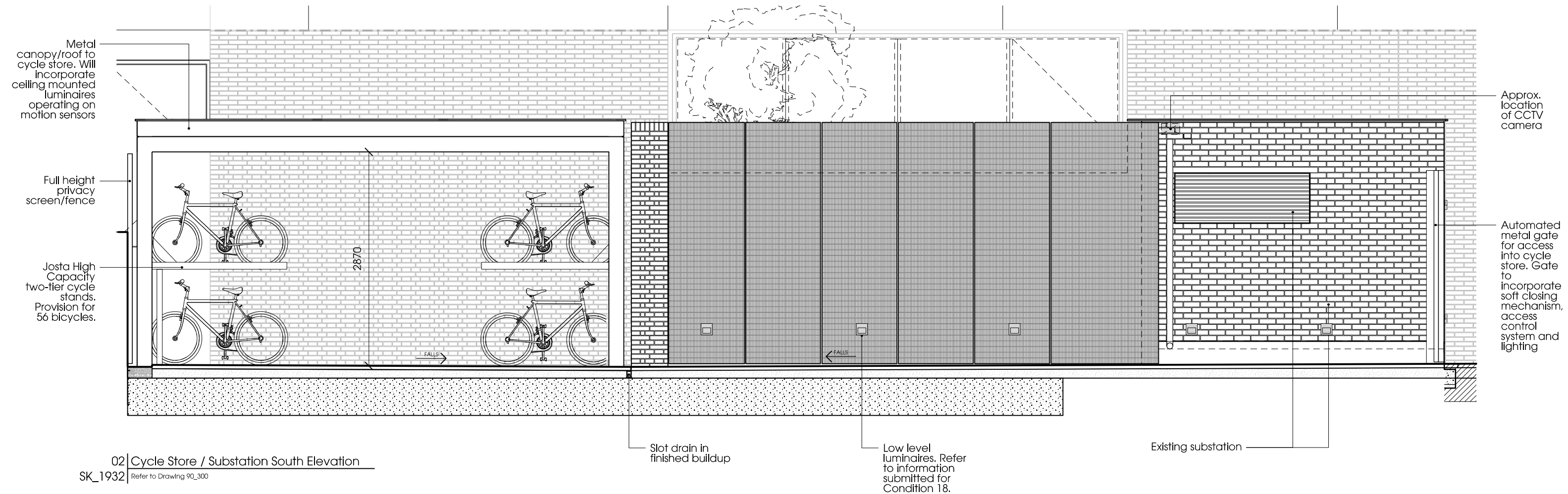


01 | Substation East Elevation
SK_1932 | Refer to Drawing 90_300



02 | Cycle Store / Substation South Elevation
SK_1932 | Refer to Drawing 90_300

Notes

Contractor to check all dimensions on site. Do not scale from this drawing. Stanton Williams to be advised of any variation between the drawings and site conditions.

© Stanton Williams.
All rights described in Chapter IV of the Copyright, Designers and Patents Act 1998 have been asserted.

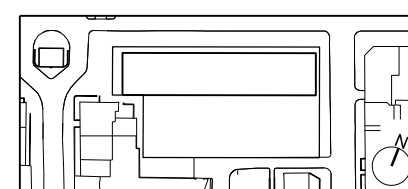
To be read in conjunction with the specification and all relevant drawings.

SUBMITTED AGAINST
CONDITION 11

Revision Date Description

0	15.12.16	Issued for discharge of planning submission
1	02.03.17	Clarifications added to satisfy Planning Conditions
2	14.03.17	Entrance gate specification clarified.

Location



Stanton Williams
36 Graham Street
London N1 8GU
Phone +44 (0)20 7880 6400
Email 464@stantonwilliams.com
www.stantonwilliams.com

STANTON
WILLIAMS

Project
Centre for Research into Rare Disease in Children
at Great Ormond Street Hospital

Drawing Title
External Works
Cycle Store / Substation
Proposed East and South Elevations

Date	Scale @ A3	Status	Project No.	Drawing No.	Revision
14.09.15	1:25	For Information	464	SK_1932	2
Drawn EM	Checked KI	Approved GH			