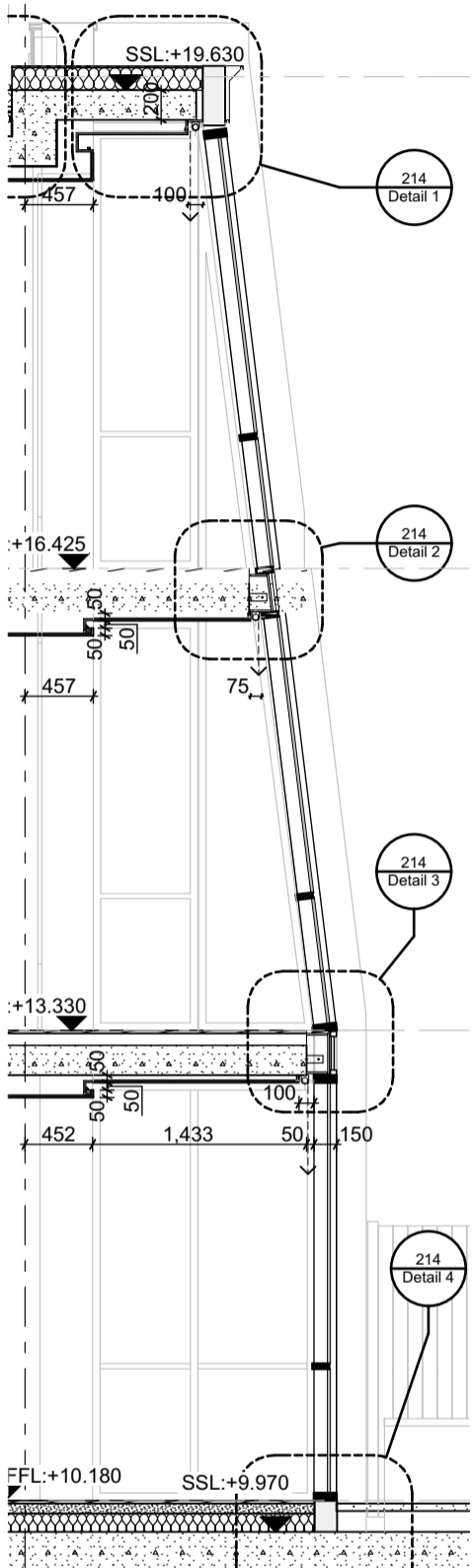
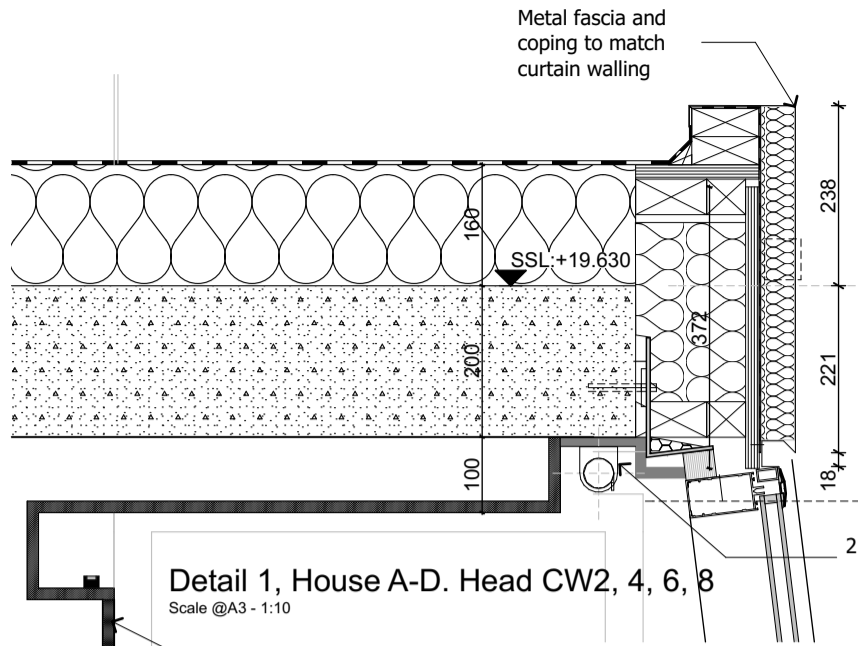


Notes:

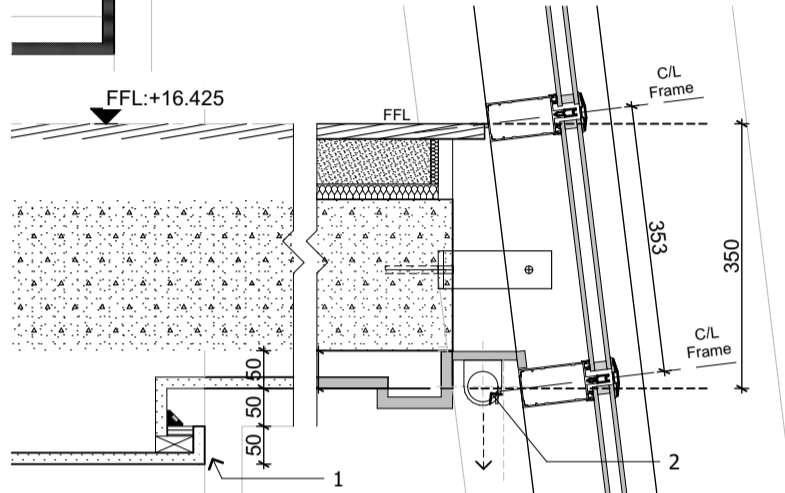
1. Ceiling bulkhead with shadow gap & LED light strip including aluminium carrier & diffuser.
2. Blinds/curtains by others, allow recess as required to accommodate manufacturer's equipment. Allow level surface with mdf/ply substrate.



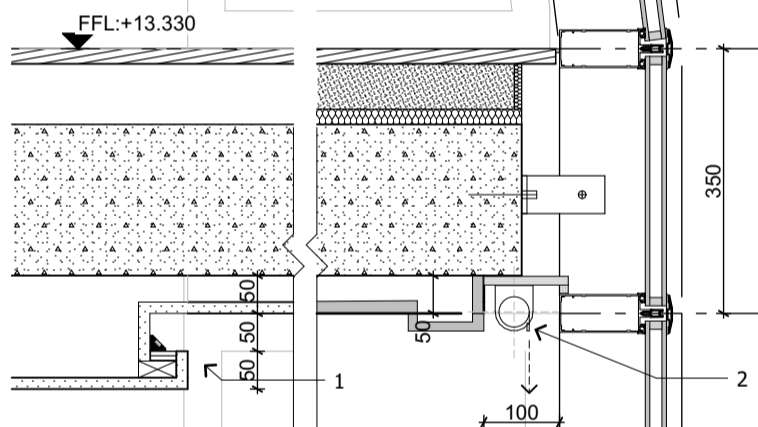
Typical Rear Bay Section
Scale @A3 - 1:50



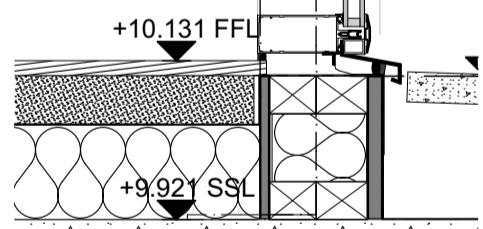
Detail 1, House A-D. Head CW2, 4, 6, 8
Scale @A3 - 1:10



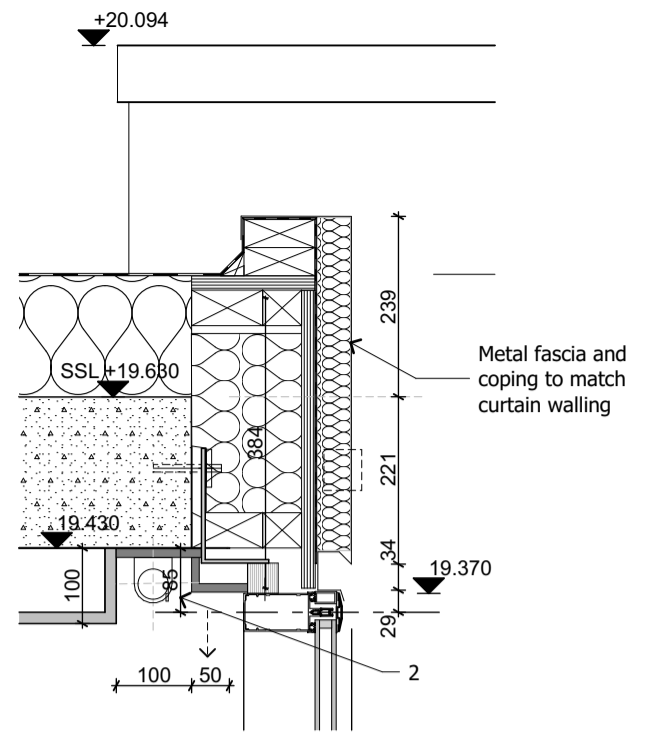
Detail 2, 2nd Flr Transome House B-D CW2, 4, 6, 8
Scale @A3 - 1:10



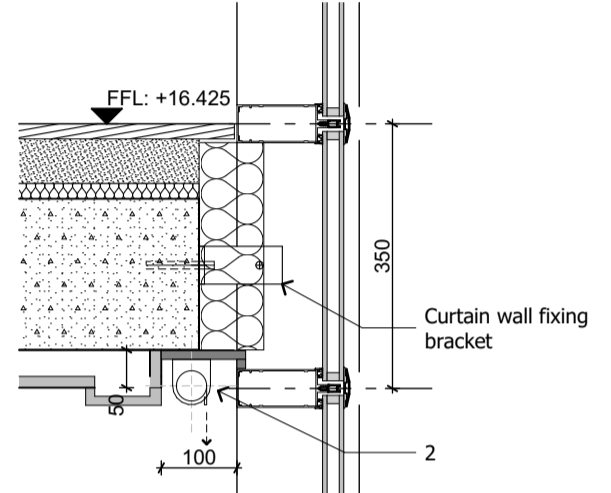
Detail 3, 1st Flr House Transome B-D CW2, 4, 6, 8
Scale @A3 - 1:10



Detail 4 Typical Ground Cill Detail
Scale @A3 - 1:10

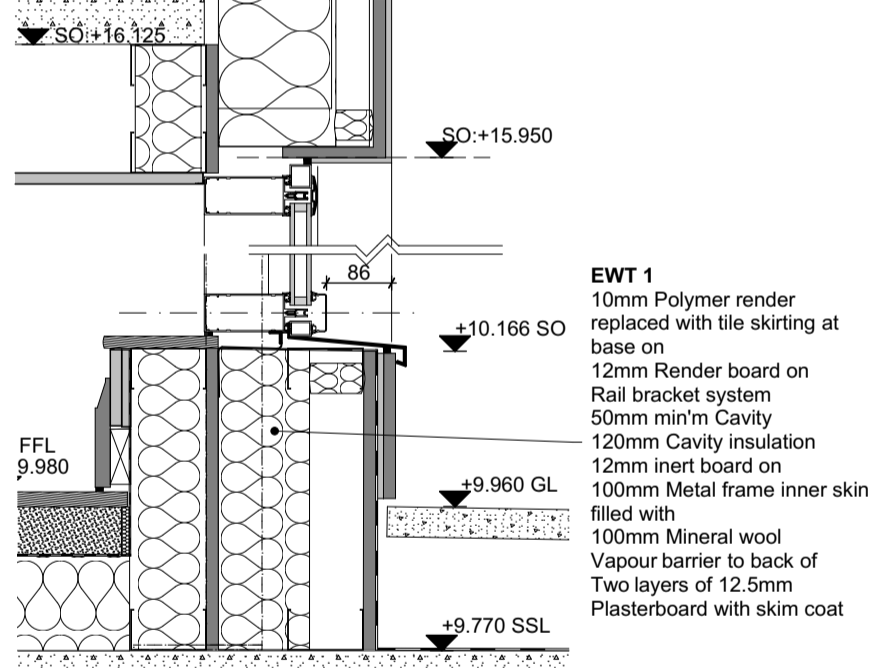


Detail 5 Roof Return Head CW3, 5, 7, 9
Scale @A3 - 1:10



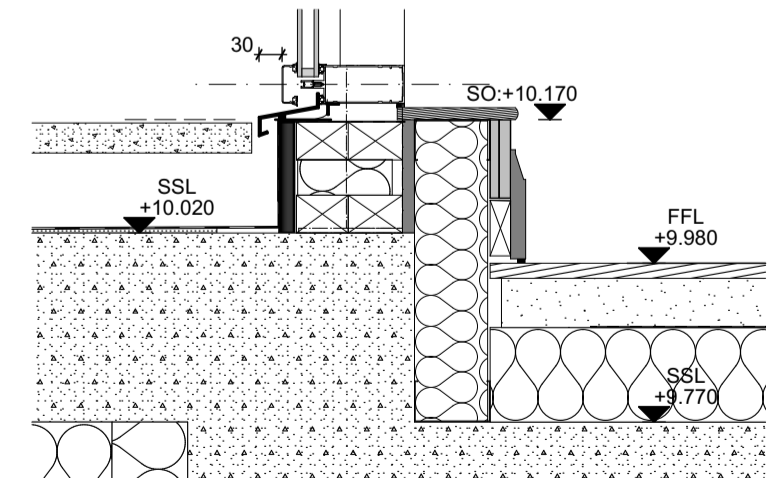
Detail 6 1st & 2nd Return Transome CW3, 5, 7, 9
Scale @A3 - 1:10

Detail 9 Rear House A Stair Head detail CW12
Scale @A3 - 1:10

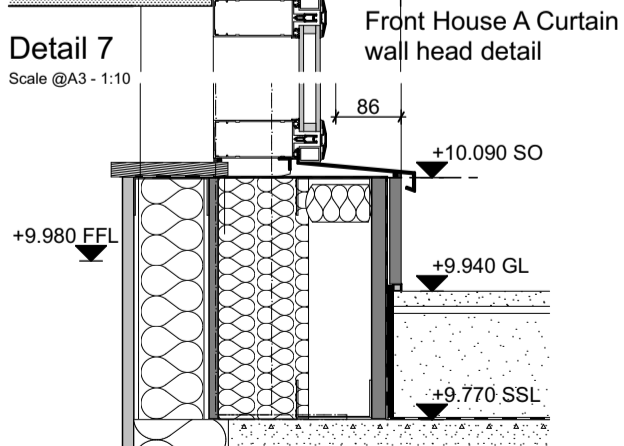


- EWT 1**
10mm Polymer render replaced with tile skirting at base on 12mm Render board on Rail bracket system 50mm min'm Cavity 120mm Cavity insulation 12mm inert board on 100mm Metal frame inner skin filled with 100mm Mineral wool Vapour barrier to back of Two layers of 12.5mm Plasterboard with skim coat

Detail 10 Rear House A Stair Cill CW12
Scale @A3 - 1:10



Detail 11 Rear side House A Stair Cill detail CW13
Scale @A3 - 1:10



Detail 7 Front House A Curtain wall head detail
Scale @A3 - 1:10

Detail 8 Front House A Cill detail CW16
Scale @A3 - 1:10

Notes: Do not Scale from this drawing Use figured dimensions only

Rev.Date: A 23/01/17
Dwn Description: Issued for planning



Client: Elsworthy Rise Properties Limited



Kalkwarf Architects
46-48 Grosvenor Gardens, London, SW1W 0EB
Telephone 020 7160 0860

Project: Adelaide Road
Drawing: PLANNING CONDITIONS; Curtain wall Details

| Scale(s): | Date: | Drawn: | Checked: |
|-------------------|----------------|--------|-------------|
| 1:50, 1:10 | 2016/09/30 | RNB | KA |
| Project No: 15233 | Drawing No: 17 | | Revision: A |

PRELIMINARY

File path: BIM Server: dell1-PC - BIM Server 20/15233 Adelaide Road_TW20