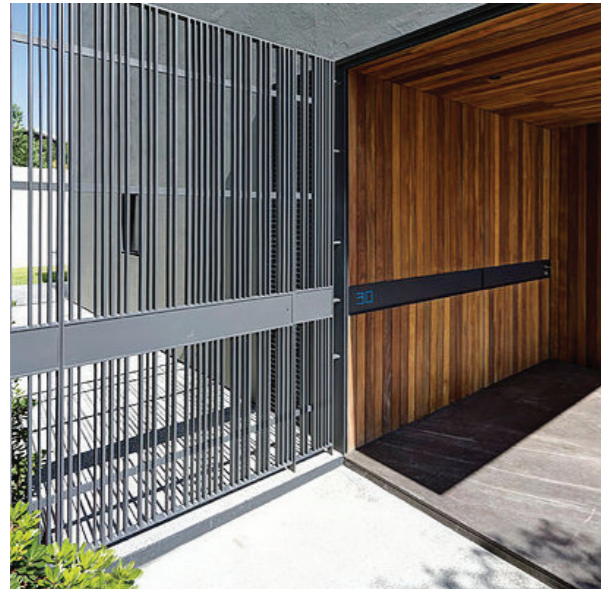


Spec. Ref. **AME-05**



**Description** DARK GREY ALUMINIUM GATES

**Product nr.**

**Location** Entrances Gloucester Avenue and Block E garden.

**Section**

**Material** Powder Coated Steel

**Colour** RAL 7043

**Type** Bespoke item

**Finish** Powder Coated

Spec. Ref. **AME-06**



**Description** DARK GREY ALUMINIUM CANOPY

**Product nr.**

**Location** Entrance Gloucester Avenue

**Section**

**Material** Aluminium Panel, Acrylic Infill with even lighting behind

**Colour**

**Type** RAL 7043

**Finish** Bespoke item Powder Coated

Spec. Ref. **AME-10**



**Description** ENTRANCE GATE SIGNAGE

**Product nr.**

**Location** Entrance Gloucester Avenue

**Section**

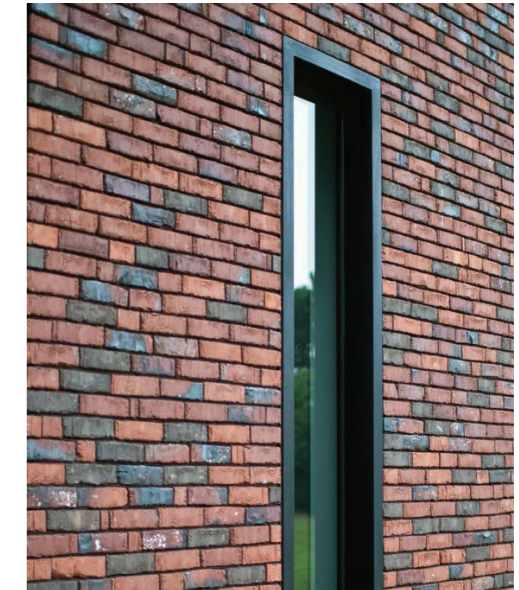
**Material** Mounted within External Gate horizontal Band

**Colour**

**Type**

**Finish**

Spec. Ref. **AME 11**



**Description** ENTRANCE REVEAL FRAME DETAIL

**Product nr.**

**Location** Entrance 2 Gloucester Avenue

**Section**

**Material** Aluminium Panel with Shadow Gap

**Colour**

**Type** RAL 7043

**Finish** POWDER COATED

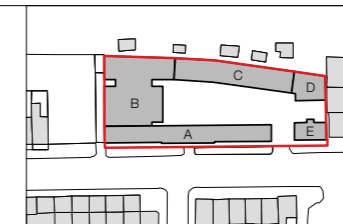
Setting out and all G.A. drawings prepared from survey information provided by others.  
All setting out must be checked on site and refer to Ordnance Datum Newlyn unless alternative Datum given  
All fixings and weatherings must be checked on site  
All dimensions must be checked on site  
This drawing must not be scaled  
This drawing must be read in conjunction with the relevant specification clauses  
This drawing must not be used for land transfer purposes  
This drawing must not be used on site unless issued for construction

**WARNING TO HOME BUYERS**  
Property Misdescriptions Act 1991  
Buyers are warned that this is a working drawing and not intended to be treated as descriptive material describing in relation to any particular property or development, any of the specified matters prescribed by any order and under the above act. The contents of this drawing may be subject to change at any time and alterations and variations can occur, during the progress of the works without revision of the drawing. Consequently the layout, form, content and dimensions of the finished construction may differ materially from those shown. Nor do the contents of this drawing constitute a contract, part of any contract or warranty.

**THIS IS A DESIGN INTENT DRAWING. SUB-CONTRACTOR / SUPPLIERS DETAILED DRAWINGS AND SPECIFICATIONS TO BE SUBMITTED FOR DESIGN TEAM INFORMATION AND/OR COMMENT**

Legend			
AME 05	Entrance Gates	GR 05	Green Roof
AME 06	Entrance Canopy	LI 05	Bollards
AME 10	Gate Signage	LI 08	Spot Lighting to articulate car parking spaces
AME 11	Entrance Surround		
AME 12	Repaired Balustrade		
FX 100	Post Boxes	LAN 01	Sheffield Cycle Stand
FF 02	Engineered Timber	LAN 02	Permeable Paver System
FF 05	Paver Balcony Finish	LAN 03	Permeable Paver System
FF 04	Carpet	LAN 05	Resin Bound Gravel Articulated
FF 08	Concrete Paver	LAN 10	Number Changing Point
GR 01	Bamboo Hedge in Amenity		
GR 02	Weeping Birch Trees		
GR 03	Artificial Grass		
GR 04	Garden Landscaping		

* Issued for comment	08.09.16
A Submitted for Condition 7 Discharge	19.10.16
B Revisions as Clouded	23.02.17
C Revision Clouds Removed	13.03.17



Client	St Ermins Property Company Limited
Project	44 Gloucester Avenue London NW1 8JD
Drawing Title	Planning Condition 07 Landscape Arrangement
Status	Planning
Drawn	SD
Checked	TJS
Scale	1:100 @ A1, 1:200 @ A3
Date	March 2016
Dwg. No.	173_PL_COND_07_11
Revision	C

**Twenty First Architecture Ltd.**  
314 Goswell Road,  
London,  
EC1V 7AF  
Tel: +44(0)20 7882 0282  
www.21starchitecture.com