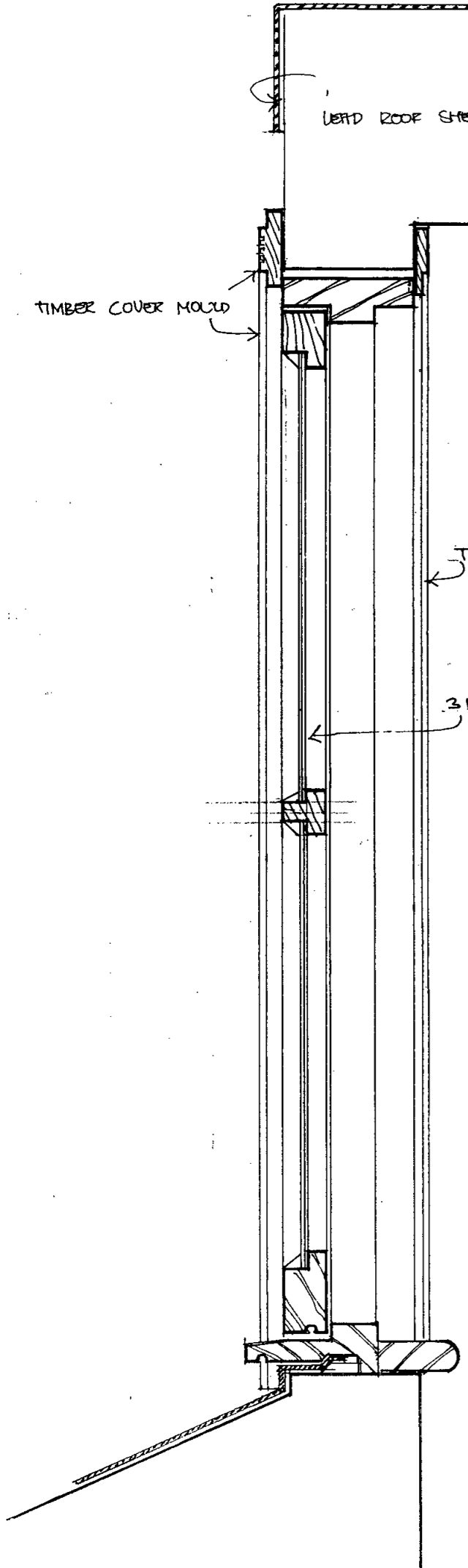


PLAN OF DORMER

LONDON BOROUGH OF CAMDEN
 TOWN AND COUNTRY PLANNING ACTS
 20 SEP 1999
 PLANS APPROVED
 ON BEHALF OF THE COUNCIL

A 2 Z DEVELOPMENTS
 4 ST MARKS SQ Details of dormer window
 9082-19 Scale 1-5

P9800690R1
 LE9800700R1



LEAD ROOF SHEETING

TIMBER COVER MOULD

TIMBER ARCHITRAVE

3 NO. CASEMENT WINDOWS

VERTICAL SECTION THRU DORMER WINDOW

LONDON BOROUGH OF CAMDEN
 TOWN AND COUNTRY PLANNING ACTS
 20 SEP 1999
 PLANS APPROVED
 ON BEHALF OF THE COUNCIL

A2Z DEVELOPMENTS
 4 ST MARKS SQ Details of dormer window
 9082 - 20 Scale 1 - 5

P9800699R1
 U9800700R1

LEAD ROOF COVERING



LEAD DORMER CHECKS



TIMBER COVER MOULD



TIMBER FRAME AND CASSETT WINDOWS



LONDON BOROUGH OF CAMDEN
TOWN CLERK
20 SEP 1999
ON BEHALF OF THE COUNCIL

LONDON BOROUGH OF CAMDEN
TOWN CLERK
20 SEP 1999
ON BEHALF OF THE COUNCIL

ELEVATION OF DORMER

P9800699R1

A2Z DEVELOPMENTS

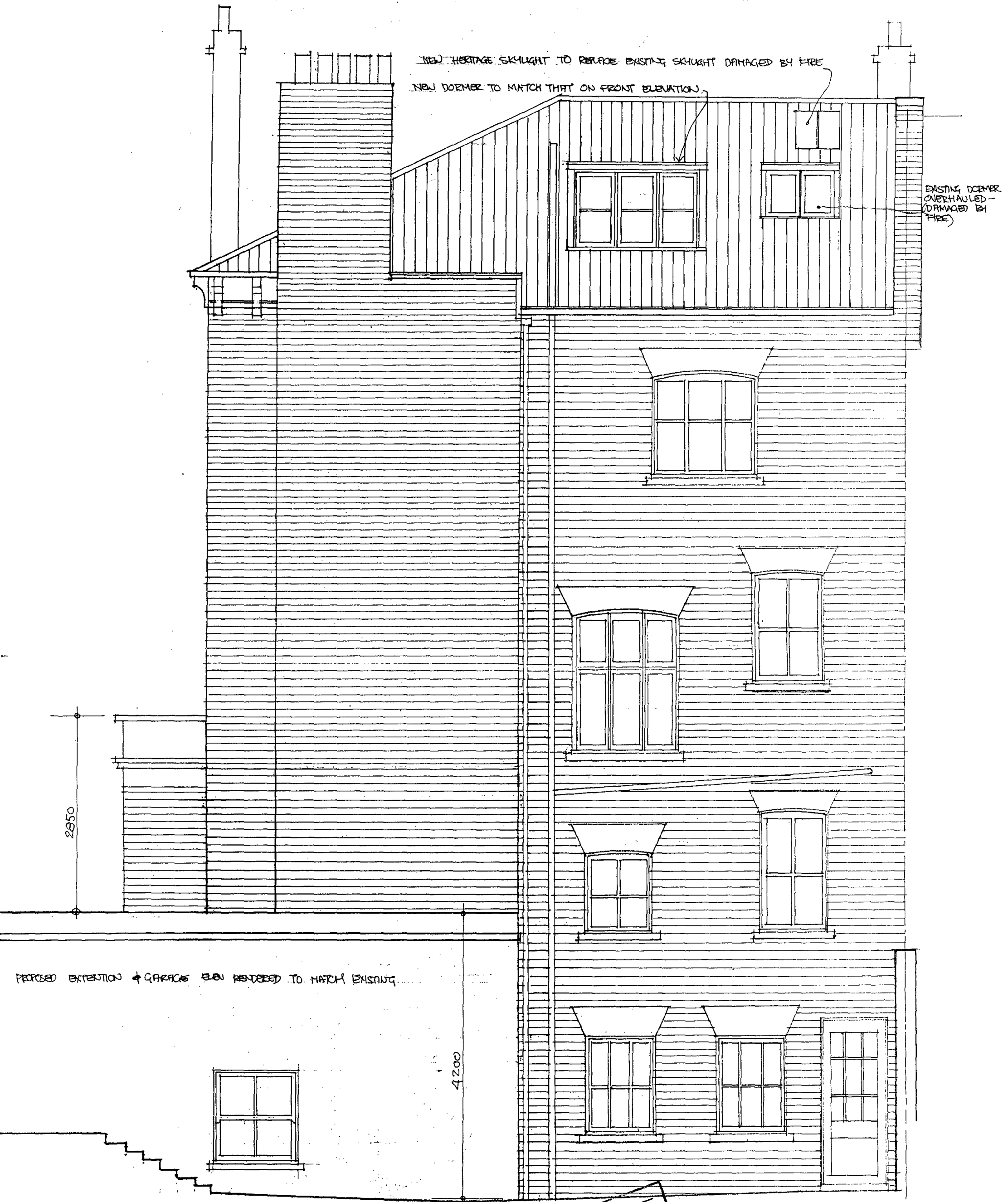
4 ST MARKS SQ

Details of dormer window

1 F9800700R1

9082 - 21

scale 1 - 5



A 2 Z Developments

4 St Marks Sq Rear elevation proposed

908246 rev D

Scale 1 to 50

P9800699R1

LE9800700R1

00000500P1

FILED
ON BEHALF OF THE COUNCIL
20 SEP 1999
LONDON BOROUGH OF CAMDEN
TOWN AND COUNTRY PLANNING ACTS

LONDON BOROUGH OF CAMDEN
TOWN AND COUNTRY PLANNING ACTS
20 SEP 1999
PLANS APPROVED
ON BEHALF OF THE COUNCIL