

02 FFL+30.39 m

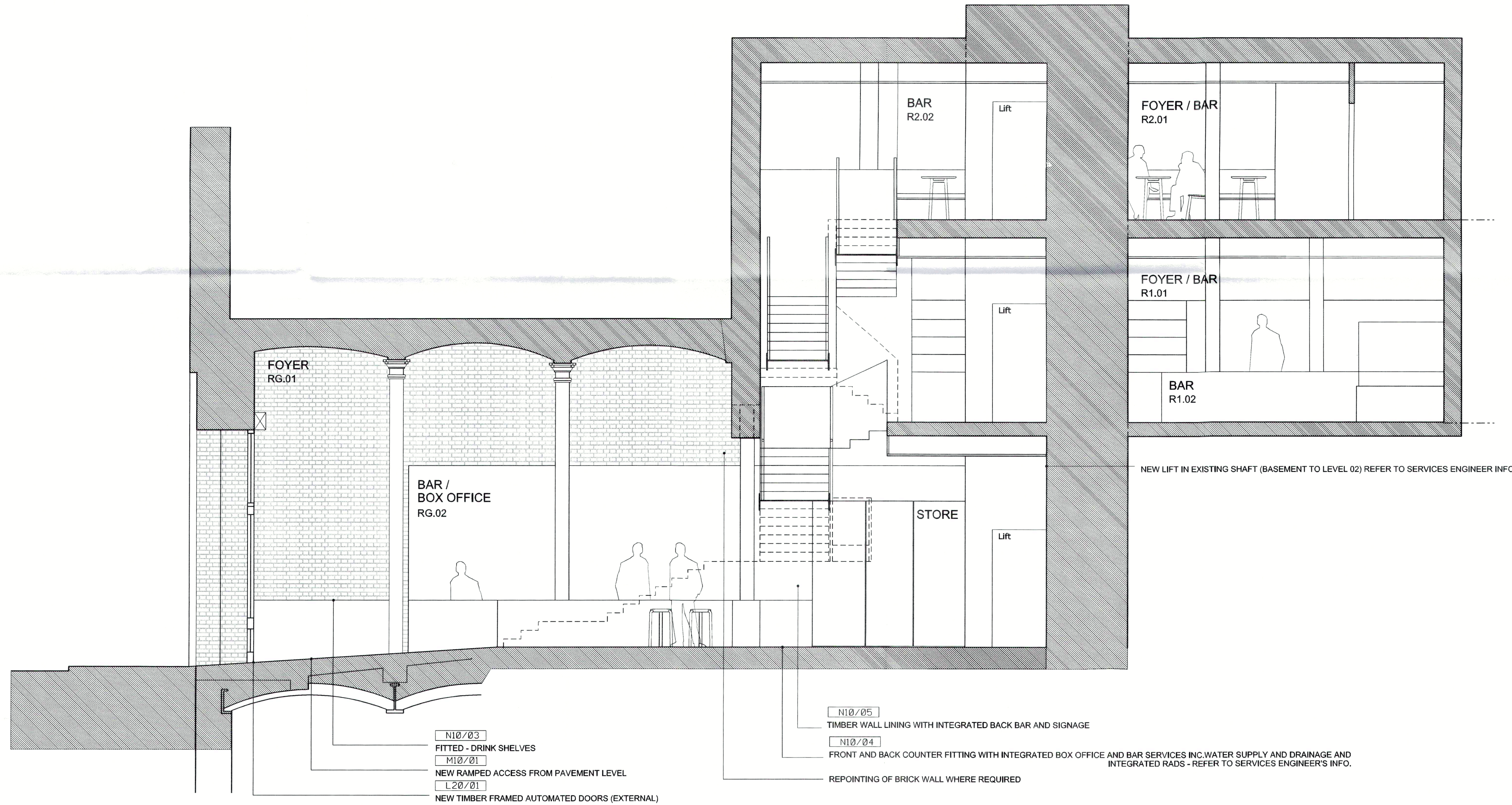
01 FFL+26.89 m

00 FFL+23.00 m

02 FFL+30.39 m

01 FFL+26.89 m

00 FFL+23.00 m



DO NOT SCALE

THE CONTRACTOR IS TO CHECK AND VERIFY ALL BUILDING AND SITE DIMENSIONS, LEVELS AND SEWER INVERT LEVELS AT CONNECTION POINTS BEFORE WORK STARTS.

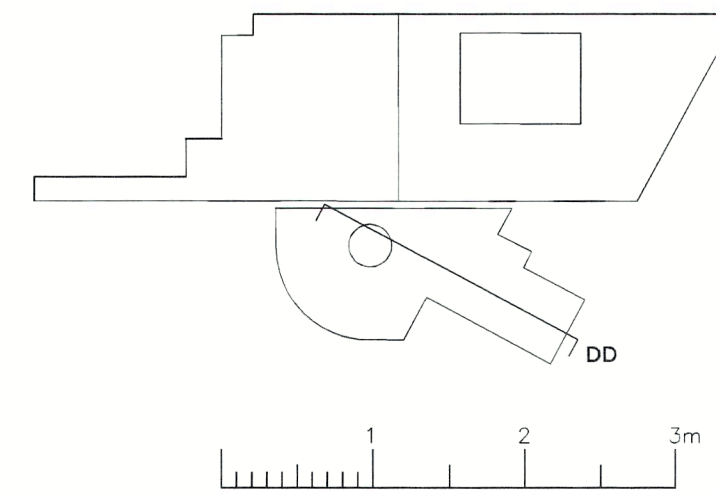
THIS DRAWING IS TO BE READ AND CHECKED IN CONJUNCTION WITH ENGINEERS AND OTHER SPECIALIST DRAWINGS.

THE DRAWING AND THE WORKS DEPICTED ARE THE COPYRIGHT OF HAWORTH TOMPKINS LTD AND MAY NOT BE REPRODUCED EXCEPT BY WRITTEN PERMISSION.

NOTES

TO BE READ IN CONJUNCTION WITH GA PLANS, SECTIONS AND ELEVATIONS.

EXISTING FABRIC



REV	DATE	DESCRIPTION
E	01.02.17	STAGE 3
D	24.11.16	STAGE 3 DRAFT
C	07.10.16	COSTING ISSUE
B	30.09.16	INFORMATION
A	26.09.16	INFORMATION
-	01.06.16	INFORMATION

33 Greenwood Place
London NW5 1LB
T +44 (0)20 7250 3225
W www.haworthtompkins.com

**Haworth
Tompkins**

JOB 1445: DONMAR WAREHOUSE

DRG PROPOSED SECTION DD

DRG No 1445-HT-S-203

REV E

SCALE 1:50@A1 DATE 01.02.17

DRAWN BY INSPECTED BY

DRAWING STATUS STAGE 3