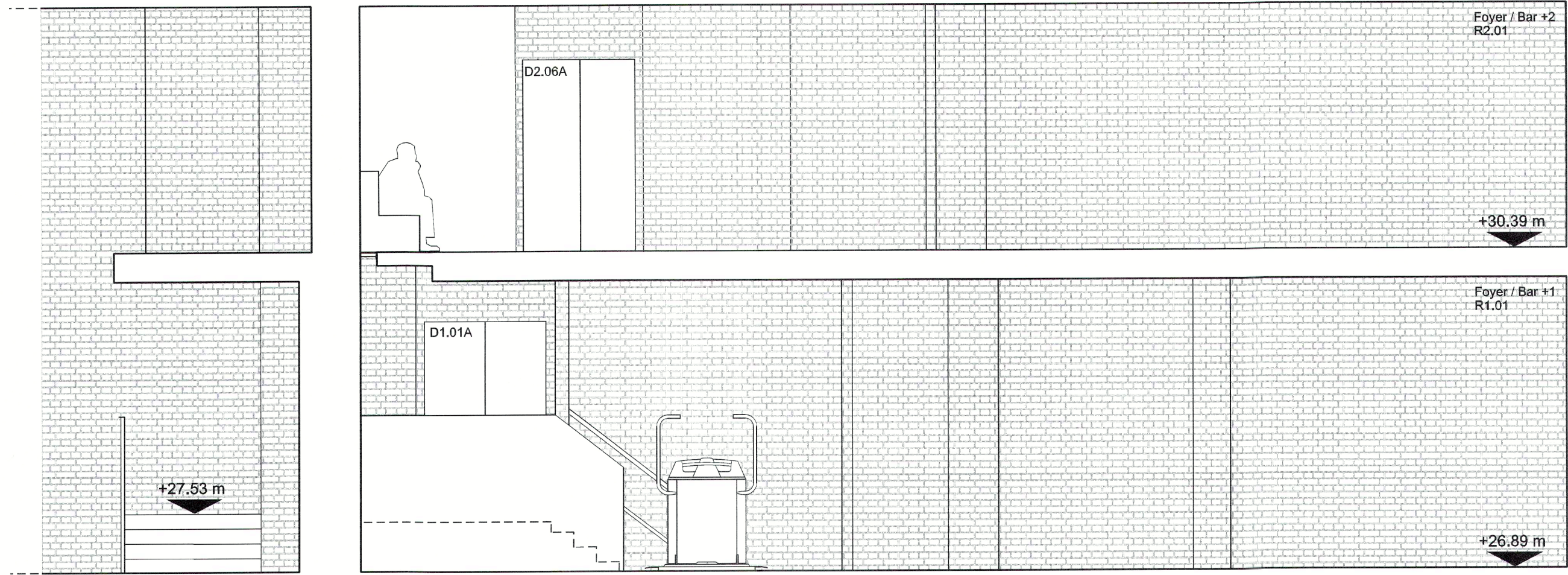


02 FFL+30.39 m

01 FFL+26.89 m

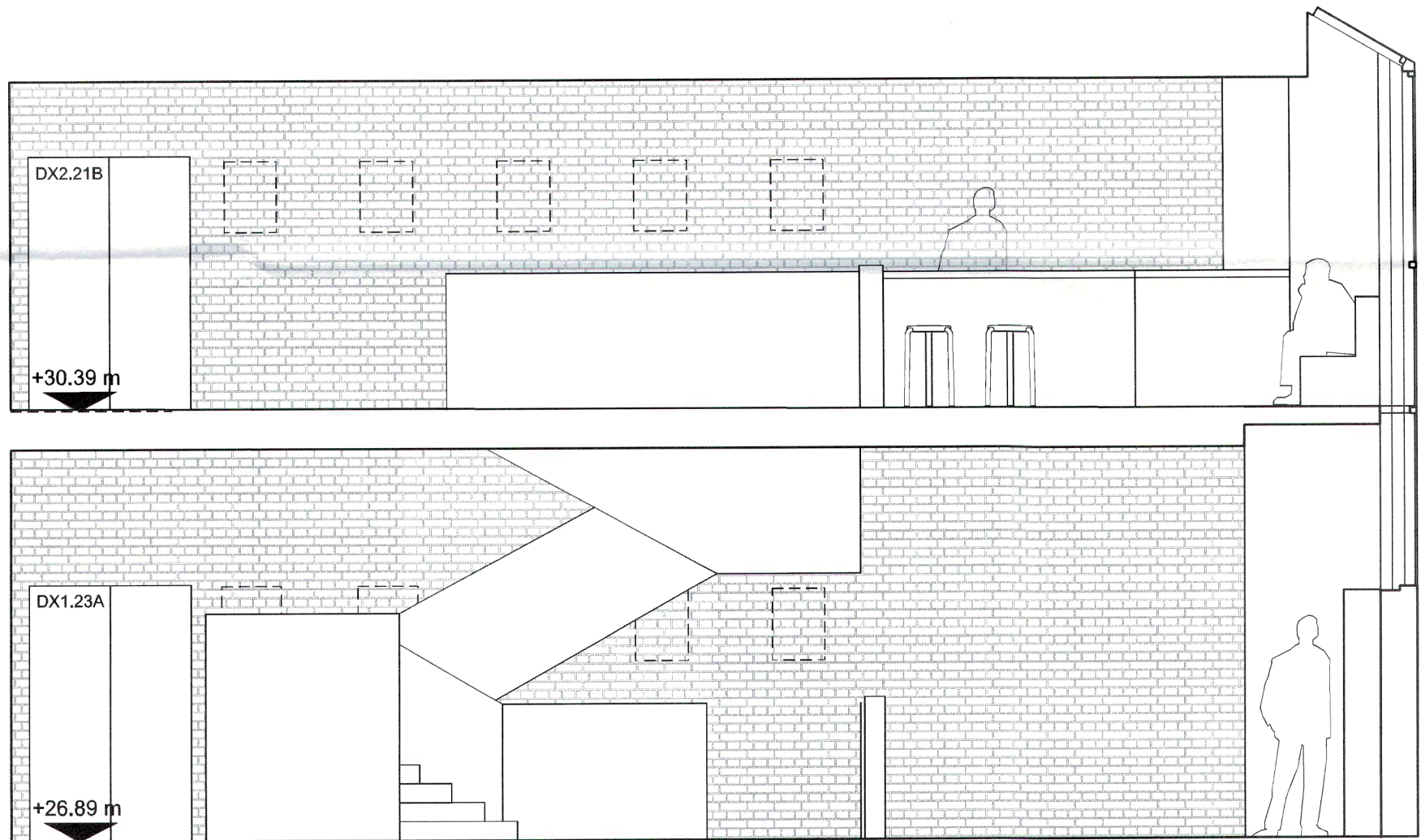


ELEVATION E1.01

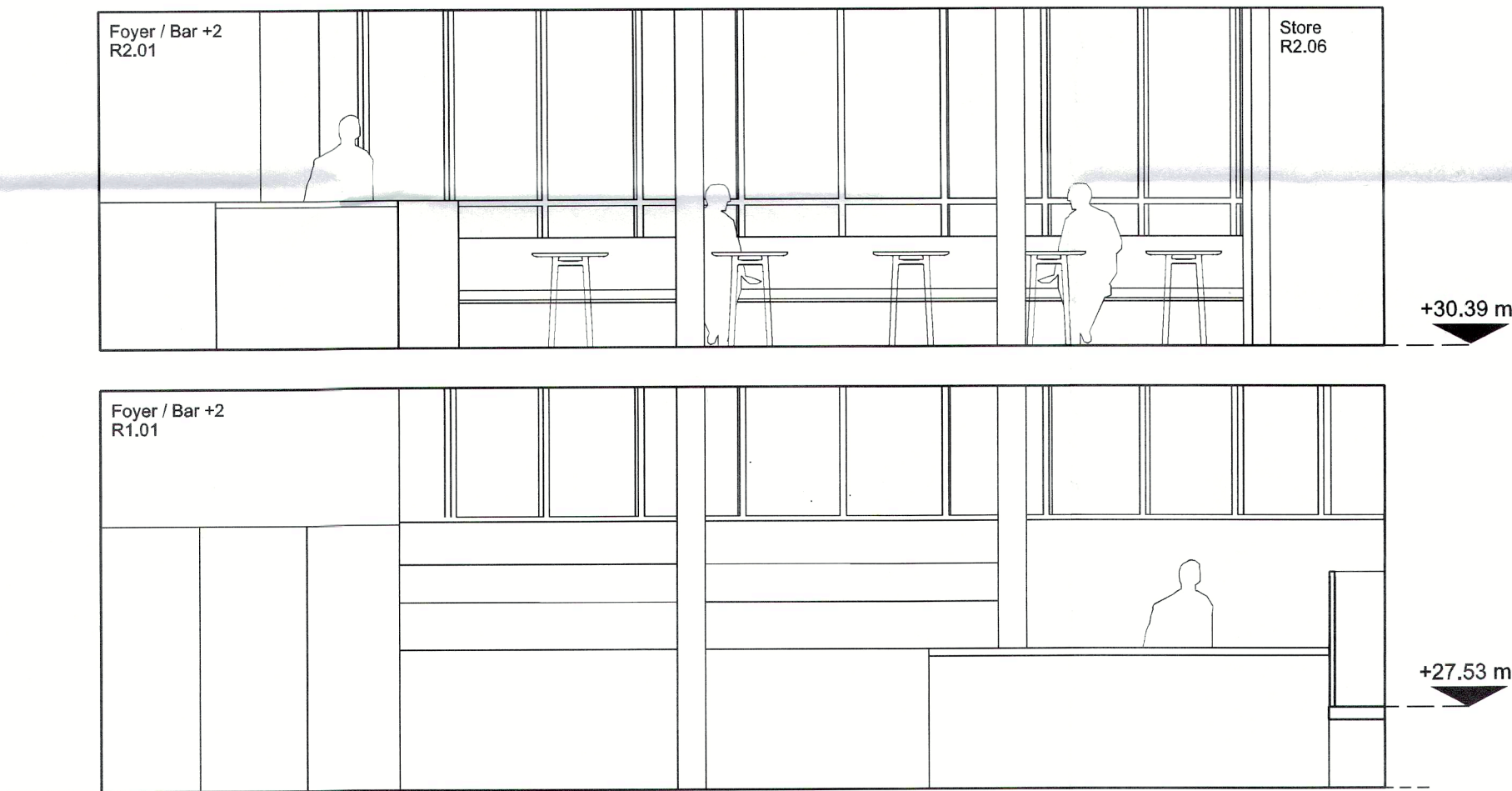
ELEVATIONS E1.02 & E2.01

02 FFL+30.39 m

01 FFL+26.89 m



ELEVATION E1.03



ELEVATION E1.04 & E2.02

DO NOT SCALE

THE CONTRACTOR IS TO CHECK AND VERIFY ALL BUILDING AND SITE DIMENSIONS, LEVELS AND SEWER INVERT LEVELS AT CONNECTION POINTS BEFORE WORK STARTS.

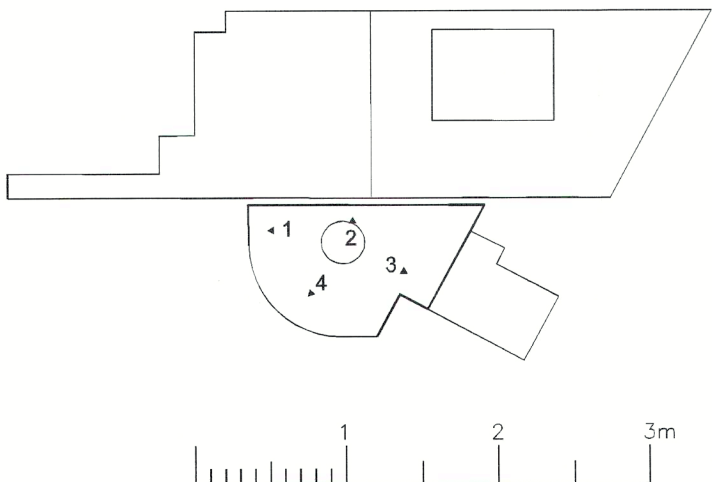
THIS DRAWING IS TO BE READ AND CHECKED IN CONJUNCTION WITH ENGINEERS AND OTHER SPECIALIST DRAWINGS.

THE DRAWING AND THE WORKS DEPICTED ARE THE COPYRIGHT OF HAWORTH TOMPKINS LTD AND MAY NOT BE REPRODUCED EXCEPT BY WRITTEN PERMISSION.

NOTES

TO BE READ IN CONJUNCTION WITH GA PLANS, SECTIONS AND ELEVATIONS.

EXISTING FABRIC



REV	DATE	DESCRIPTION
C	01.02.17	STAGE 3
B	24.11.16	DRAFT STAGE 3
A	07.10.16	COSTING ISSUE
-	30.09.16	INFORMATION

33 Greenwood Place London NW5 1LB T +44 (0)20 7250 3225 W www.haworthtompkins.com		<b>Haworth Tompkins</b>	
JOB 1445: DONMAR WAREHOUSE		REV C	
DRG PROPOSED INTERNAL ELEVATION FIRST AND SECOND FLOOR FOH		DATE 01.02.17	
DRG No 1445-HT-E-361		INSPECTED BY	
SCALE 1:50@A1		DRAWING STATUS STAGE 3	