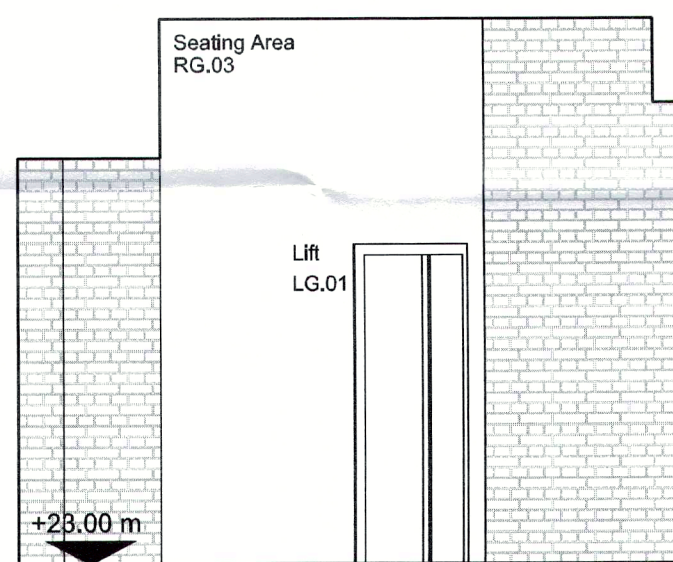


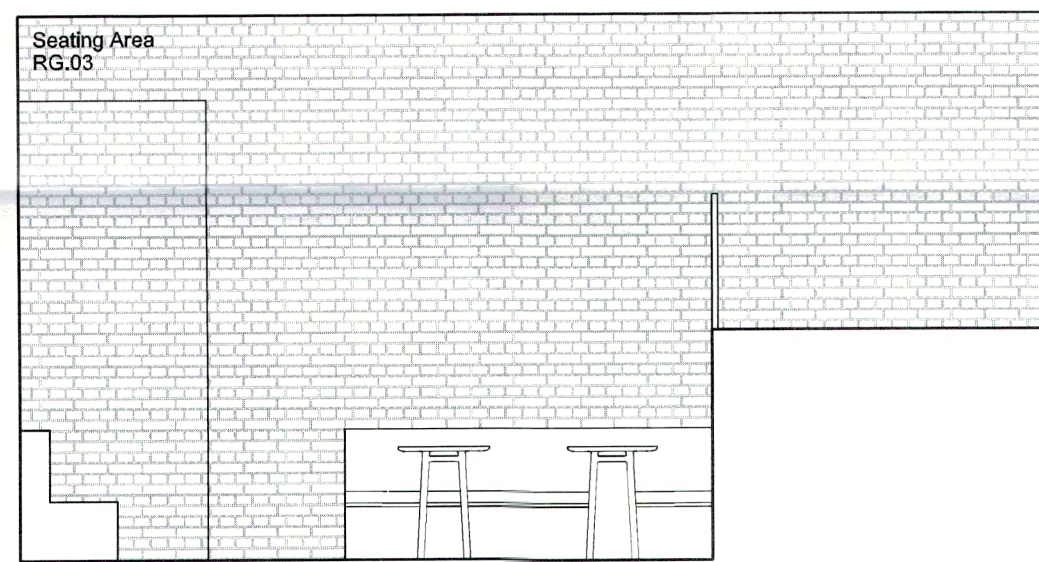
02 FFL+30.39 m

01 FFL+26.89 m

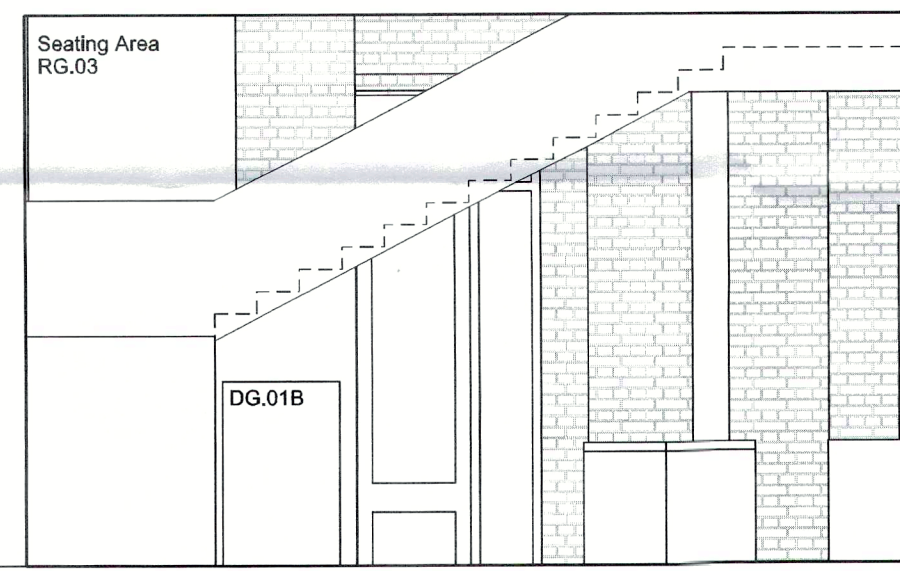
00 FFL+23.00 m



ELEVATION EG.01



ELEVATION EG.02



ELEVATION EG.03



ELEVATION EG.04

DO NOT SCALE

THE CONTRACTOR IS TO CHECK AND VERIFY ALL BUILDING AND SITE DIMENSIONS, LEVELS AND SEWER INVERT LEVELS AT CONNECTION POINTS BEFORE WORK STARTS.

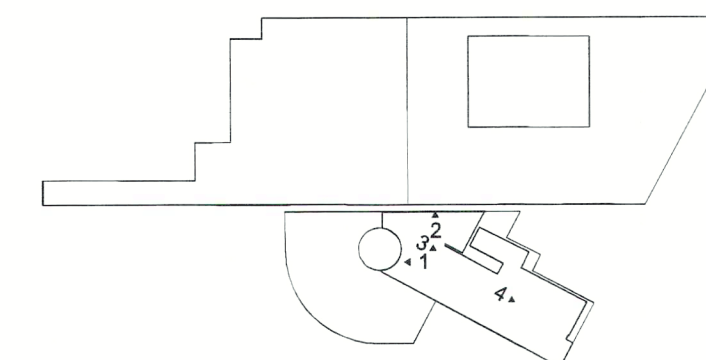
THIS DRAWING IS TO BE READ AND CHECKED IN CONJUNCTION WITH ENGINEERS AND OTHER SPECIALIST DRAWINGS.

THE DRAWING AND THE WORKS DEPICTED ARE THE COPYRIGHT OF HAWORTH TOMPKINS LTD AND MAY NOT BE REPRODUCED EXCEPT BY WRITTEN PERMISSION.

NOTES

TO BE READ IN CONJUNCTION WITH GA PLANS, SECTIONS AND ELEVATIONS.

EXISTING FABRIC



1 2 3m

REV	DATE	DESCRIPTION
C	01.02.17	STAGE 3
B	24.11.16	STAGE 3 DRAFT
A	07.10.16	COSTING ISSUE
-	30.09.16	INFORMATION

33 Greenwood Place London NW5 1LB T +44 (0)20 7290 3225 W www.haworthtompkins.com	
Haworth Tompkins	
JOB 1445: DONMAR WAREHOUSE	
DRG PROPOSED INTERNAL ELEVATION GROUND FLOOR	
DRG No 1445-HT-E-360	REV C
SCALE 1:50@A1	DATE 01.02.17
DRAWN BY	INSPECTED BY
DRAWING STATUS	STAGE 3