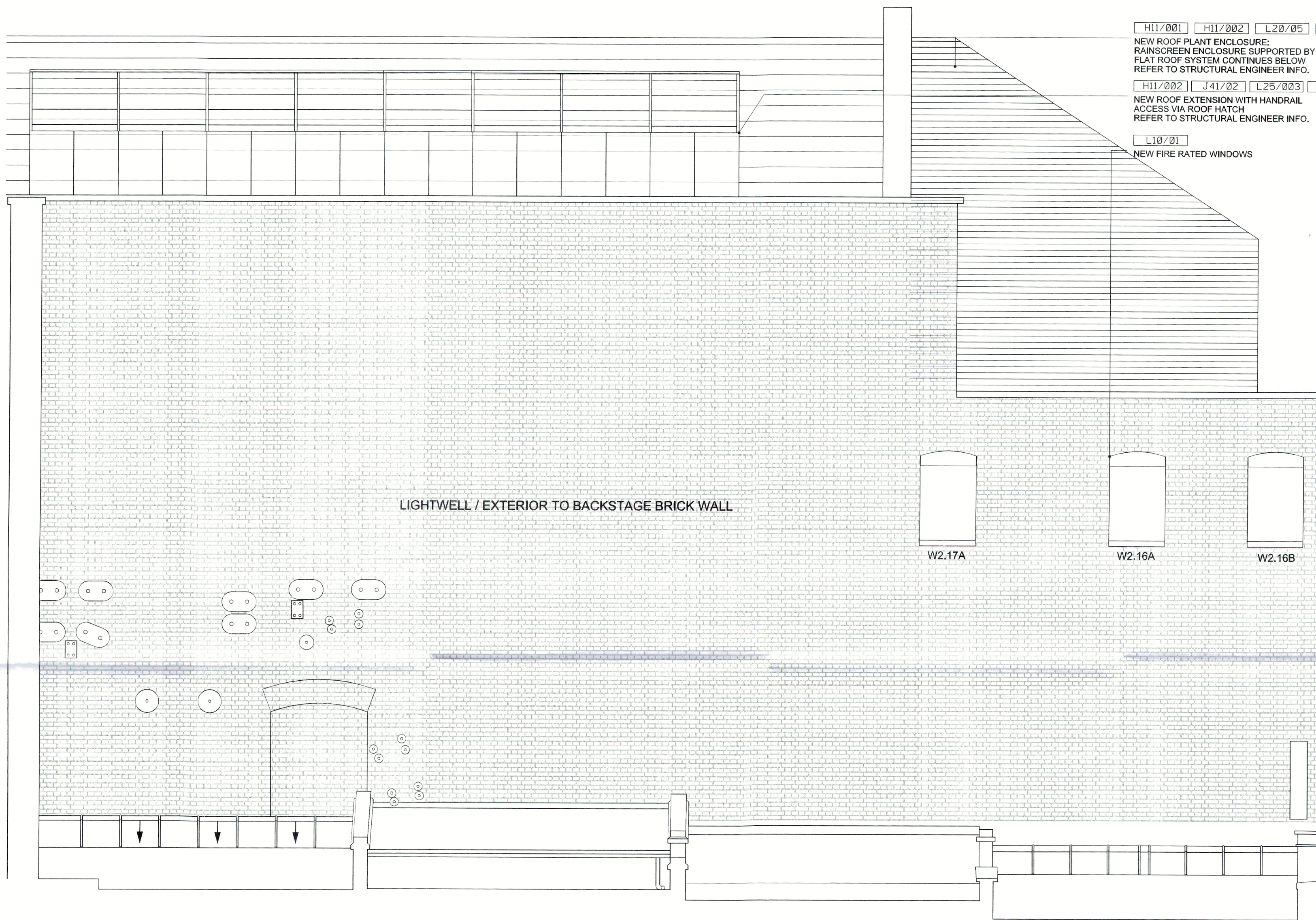




ELEVATION EL.01



ELEVATION ER.02

H11/001 H11/002 L20/05 H72/01  
NEW ROOF PLANT ENCLOSURE:  
RAINSREEN ENCLOSURE SUPPORTED BY A NEW STEEL FRAME  
FLAT ROOF SYSTEM CONTINUES BELOW  
REFER TO STRUCTURAL ENGINEER INFO.  
H11/002 J41/02 L25/003 L20/021 H72/01 J41/02  
NEW ROOF EXTENSION WITH HANDRAIL  
ACCESS VIA ROOF HATCH  
REFER TO STRUCTURAL ENGINEER INFO.  
L10/01  
NEW FIRE RATED WINDOWS

02 FFL+30.39 m

01 FFL+26.89 m

00 FFL+23.00 m

02 FFL+30.39 m

01 FFL+26.89 m

00 FFL+23.00 m

#### DO NOT SCALE

THE CONTRACTOR IS TO CHECK AND VERIFY ALL BUILDING AND SITE DIMENSIONS, LEVELS AND SEWER INVERT LEVELS AT CONNECTION POINTS BEFORE WORK STARTS.

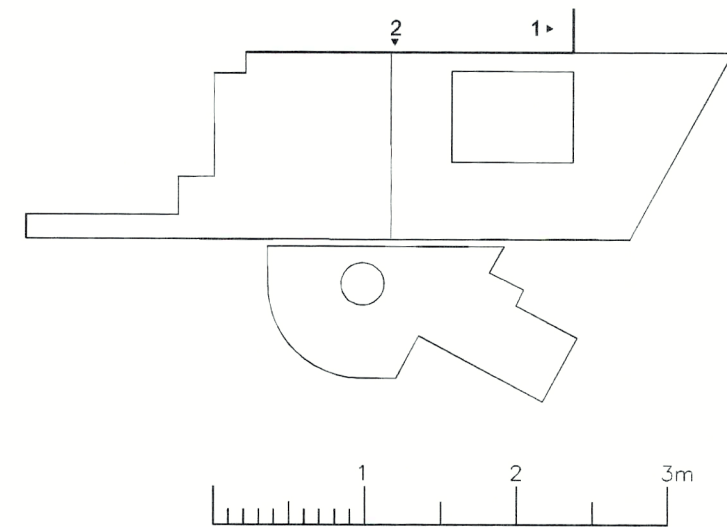
THIS DRAWING IS TO BE READ AND CHECKED IN CONJUNCTION WITH ENGINEERS AND OTHER SPECIALIST DRAWINGS.

THE DRAWING AND THE WORKS DEPICTED ARE THE COPYRIGHT OF HAWORTH TOMPKINS LTD AND MAY NOT BE REPRODUCED EXCEPT BY WRITTEN PERMISSION.

#### NOTES

TO BE READ IN CONJUNCTION WITH GA PLANS, SECTIONS AND ELEVATIONS.

EXISTING FABRIC



REV	DATE	DESCRIPTION
C	01.02.17	STAGE 3
B	24.11.16	STAGE 3 DRAFT
A	07.10.16	COSTING ISSUE
-	30.09.16	INFORMATION

33 Greenwood Place London NW5 1LB T +44 (0)20 7220 3225 W www.haworthtompkins.com	<b>Haworth Tompkins</b>
JOB 1445: DONMAR WAREHOUSE	
DRG PROPOSED EXTERNAL ELEVATION 1 + 2 AUDITORIUM LIGHTWELL	
DRG No 1445-HT-E-352	REV C
SCALE 1:50@A1	DATE 01.02.17
DRAWN BY	INSPECTED BY
DRAWING STATUS	STAGE 3