

- Note 1**
Relocated window positions.
- Note 2**
Section through lightwell
- Note 3**
Longer window behind the existing garden wall between 26 & 28 Belsize Lane
- Note 4**
Retained existing exterior ground level
- Generally**
a: all obscured windows to be fixed or bottom-hung open-in

- ① Bronze cladding panels
- ② Grey stone with horizontal banding
- ③ Powder coated bronze frames to windows
- ④ Bronze roof
- ⑤ Powder coated bronze frame rooflights
- ⑥ Timber decking/cladding to terrace
- ⑦ Glass balustrade
- ⑧ Etched glass for privacy
- ⑨ Opaque glass insulated panel
- ⑩ Stone paving to entrance
- ⑪ Timber front door
- ⑫ Air handling unit
- ⑬ Biv recycling enclosure
- ⑭ 1m high air handling unit with acoustic attenuator behind planting
- ⑮ Chimney flue
- ⑯ Existing brick boundary wall to be retained and repaired where necessary
- ⑰ Solid infill panel with concealed hinges

Revision	Date	Notes
1	13/06/14	Non Material Amendment Application
2	18/07/14	Flues shown as Existing Approved Scheme (Ref: 2010/3112/P)
3	29/07/14	Extended stone cladding
4	14/08/15	Planning Application to vary condition 04. Revisions are clouded with associated description adjacent
5	15/03/17	Planning Application to discharge condition 09. Vents shown, to be clad in associated roof material.

Key Plan

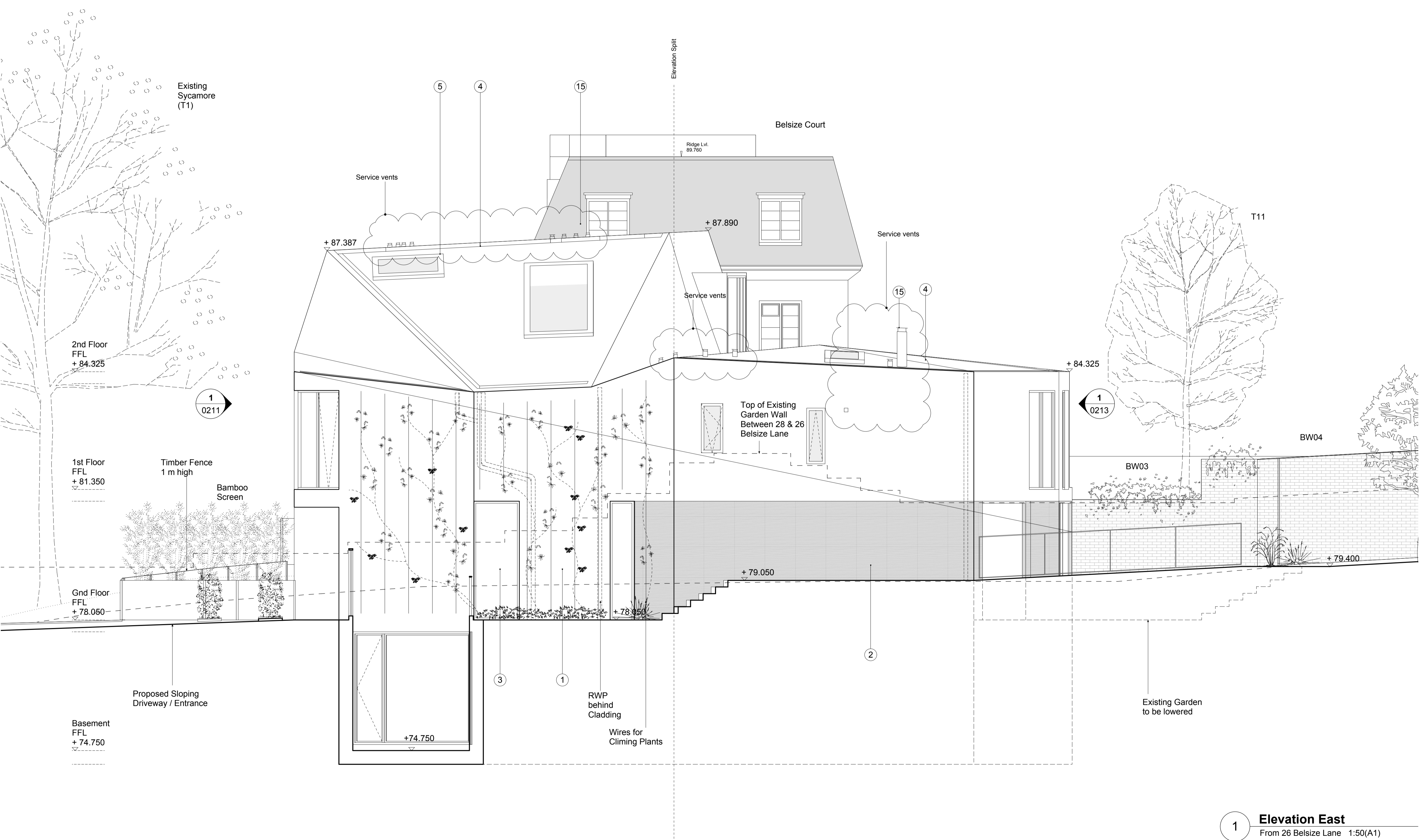
1. Do not scale drawings. All dimensions to be checked on site. Errors to be reported to architect. To be read in conjunction with all relevant architects services and engineers drawings.

2. Contractors, sub-contractors and suppliers to verify any critical dimensions on site prior to fabrication of any building element. Any discrepancies to be reported to the architect.

3. This drawing to be read in conjunction with all relevant specifications, engineers and specialists consultants information and any discrepancies reported prior to installation.

ABA
Alison Brooks Architects Ltd
Studio 610, Highgate Studios, 53/79 Highgate Road, London NWS 1TL
T 0207 267 9777 F 0207 267 9772 E info@alisonbrooksarchitects.com

Project : 28 Belsize Lane
Title : Elevation East
Client : Vivien & Edmund Bradley
Scale : 1:50 (A1), 1:100 (A3)
Date : 15. 12. 2013
Drawing : 2214_0212



1 Elevation East
From 26 Belsize Lane 1:50(A1)

For Approval