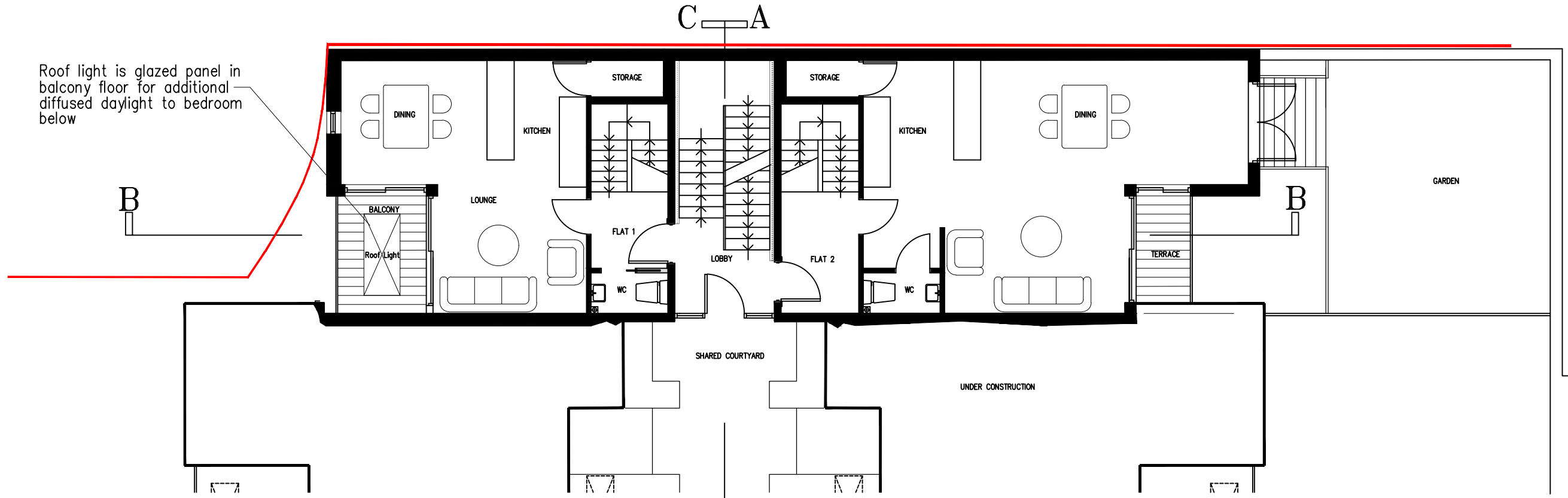
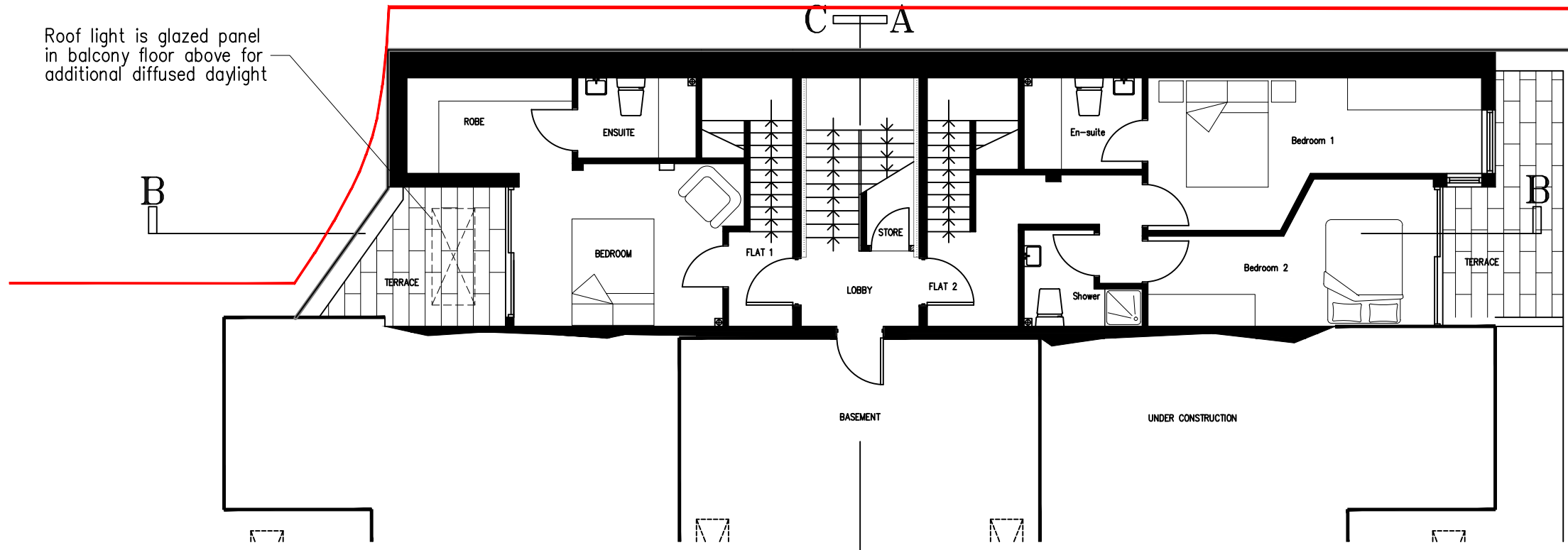


Roof light is glazed panel in balcony floor for additional diffused daylight to bedroom below



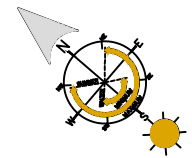
GROUND FLOOR PLAN

Roof light is glazed panel in balcony floor above for additional diffused daylight




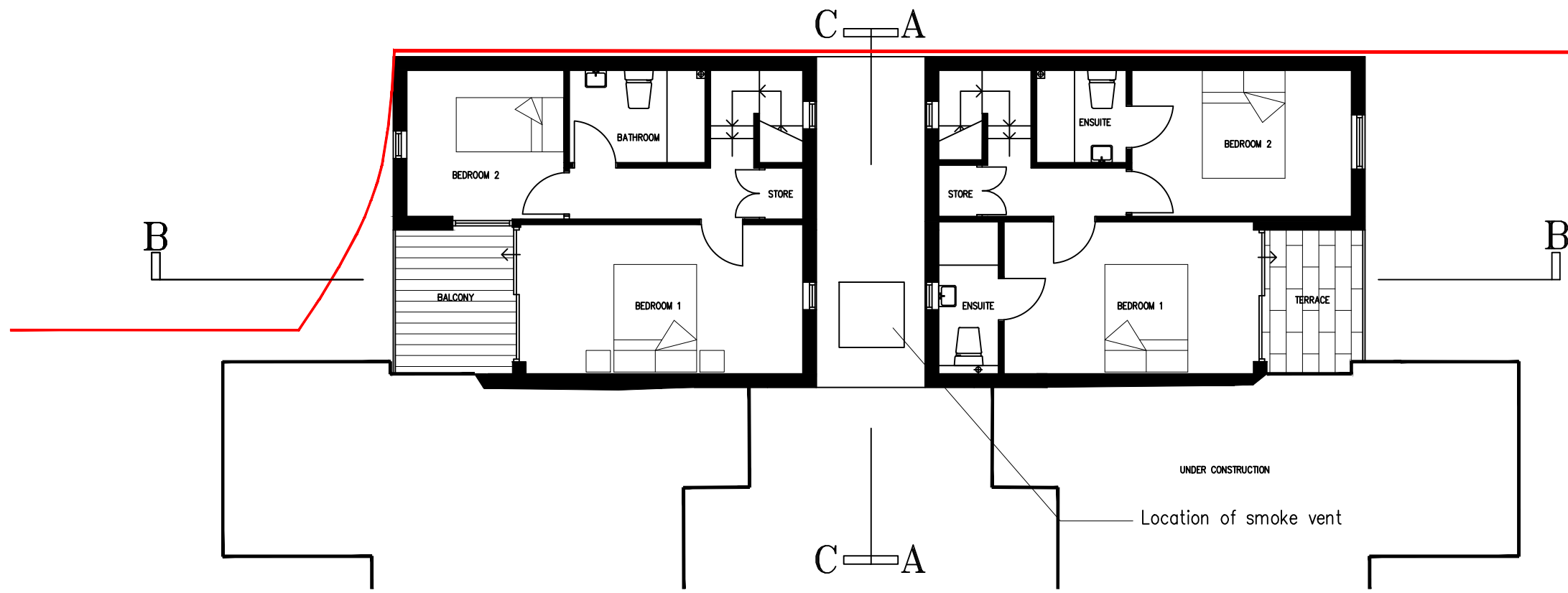
LOWER GROUND FLOOR PLAN

| Flat   | Type                   | Size             |
|--------|------------------------|------------------|
| Flat 1 | 1 Bed, 2 Person Duplex | 62m <sup>2</sup> |
| Flat 2 | 2 Bed, 4 Person Duplex | 96m <sup>2</sup> |
| Flat 3 | 2 Bed, 3 Person Duplex | 70m <sup>2</sup> |
| Flat 4 | 2 Bed, 4 Person Duplex | 80m <sup>2</sup> |



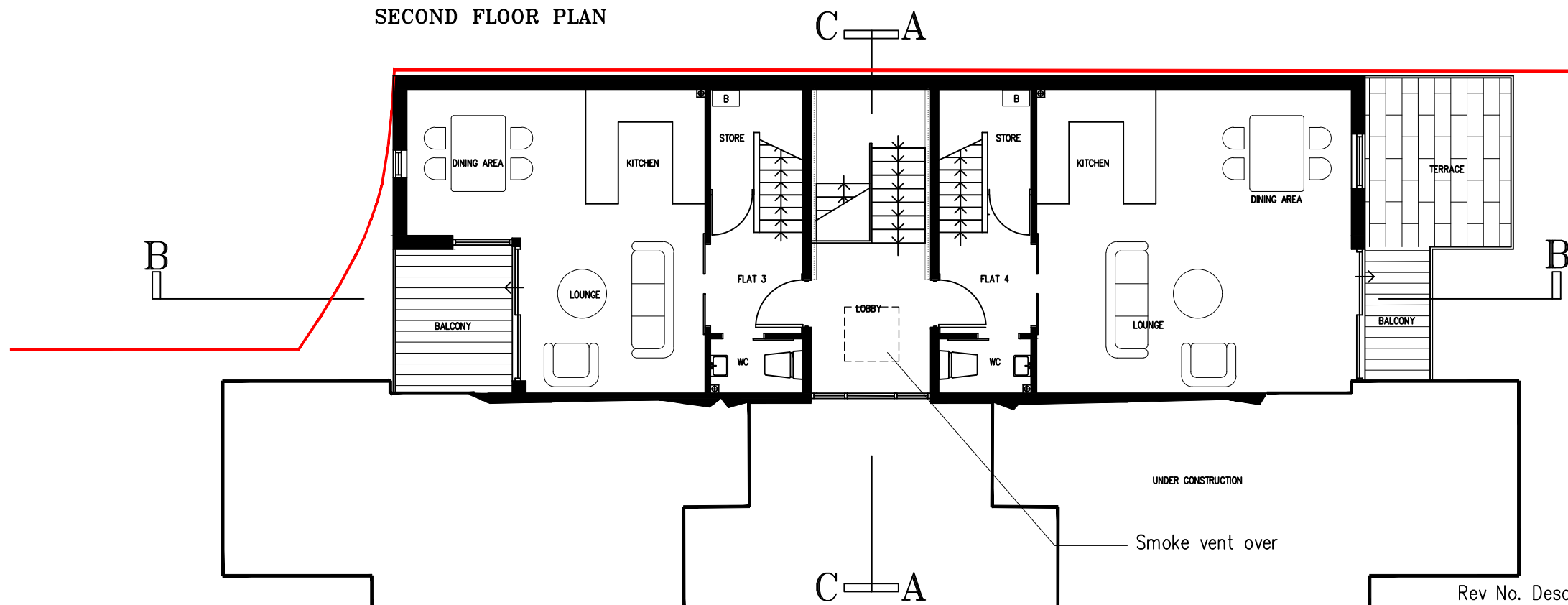
| Rev No. | Description                | By | Date     |
|---------|----------------------------|----|----------|
| A       | - Amended for resubmission | JW | 03/03/16 |
| B       | - Amended for resubmission | JW | 15/07/16 |
| C       | - Amended for resubmission | JP | 30/11/16 |
| D       | - Amended for resubmission | JP | 15/03/17 |

|   |                       |  |
|---|-----------------------|--|
|  <b>Proctor Watts Cole Rutter</b><br>Chartered Architects & Town Planners<br>Grosvenor House, Bleke Street, Shaftesbury, Dorset, SP7 8AW.<br>Phone: 01747 851881 Fax: 01747 851081<br>mail@pwc.co.uk www.pwc.co.uk | Client: Four Quarters | Drawn By: S Way                            |
|   | Dwg: Floor Plans 1    | Checked By: GC                             |
| Job No: 4672  | Dwg No: P03           | Notes: 4 Maisonettes, College Lane, London |
| Date: 07/04/2016  | Scale: 1:100@A3       |  |

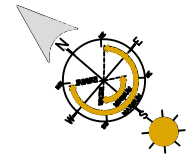


SECOND FLOOR PLAN


| Flat   | Type                   | Size |
|--------|------------------------|------|
| Flat 1 | 1 Bed, 2 Person Duplex | 62m2 |
| Flat 2 | 2 Bed, 4 Person Duplex | 96m2 |
| Flat 3 | 2 Bed, 3 Person Duplex | 70m2 |
| Flat 4 | 2 Bed, 4 Person Duplex | 80m2 |



FIRST FLOOR PLAN

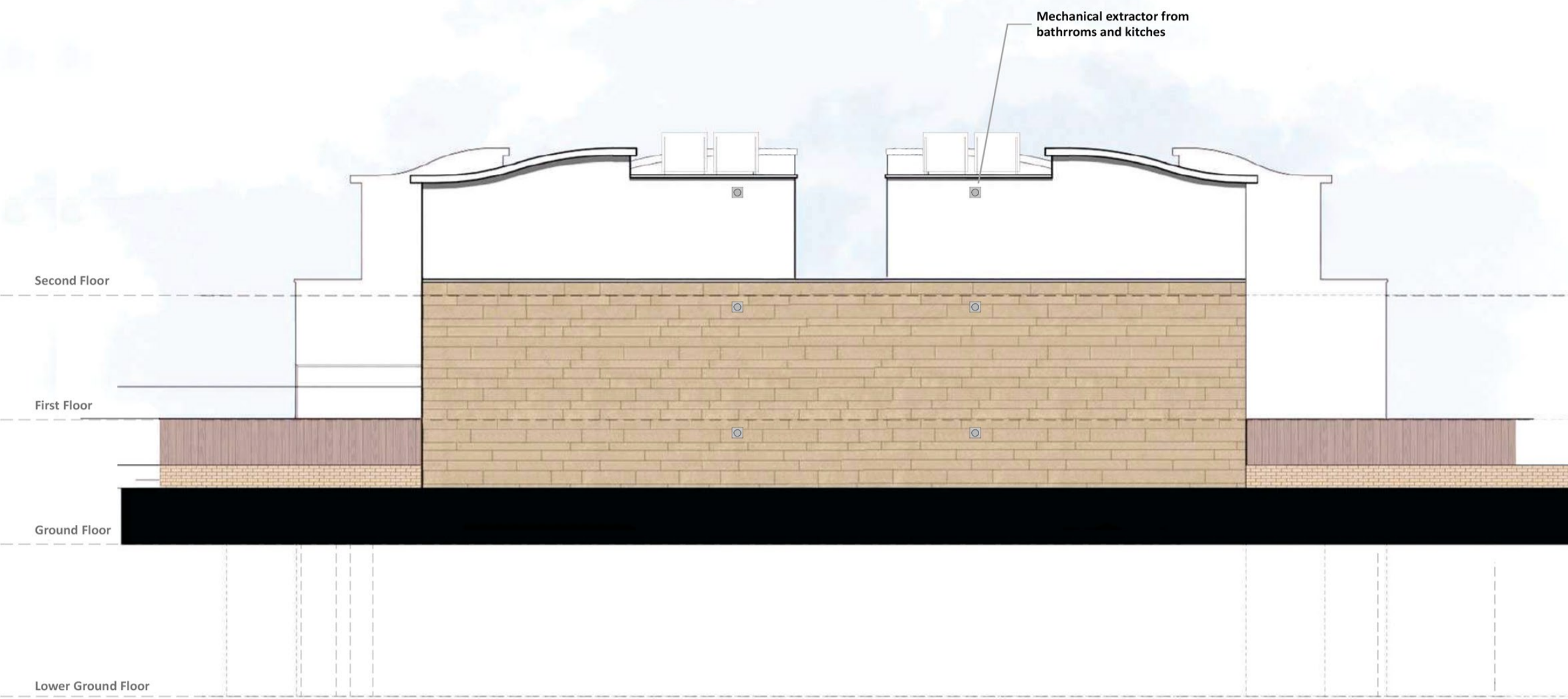


| Rev No. | Description                | By | Date     |
|---------|----------------------------|----|----------|
| A       | - Amended for resubmission | JW | 03/03/16 |
| B       | - Amended for resubmission | JW | 15/07/16 |
| C       | - Amended for resubmission | JP | 30/11/16 |
| D       | - Amended for resubmission | JP | 15/03/17 |

|   |                       |  |
|---|-----------------------|--|
|  <b>Proctor Watts Cole Rutter</b><br>Chartered Architects & Town Planners<br>Grosvenor House, Bleke Street, Shaftesbury, Dorset, SP7 8AW.<br>Phone: 01747 851881 Fax: 01747 851081<br>mail@pwcr.co.uk www.pwcr.co.uk | Client: Four Quarters | Drawn By: S Way                            |
|   | Dwg: Floor Plans 2    | Checked By: GC                             |
| Job No: 4672  | Dwg No: P04           | Notes: 4 Maisonettes, College Lane, London |
| Date: 07/04/2016  | Scale: 1:100@A3       |  |



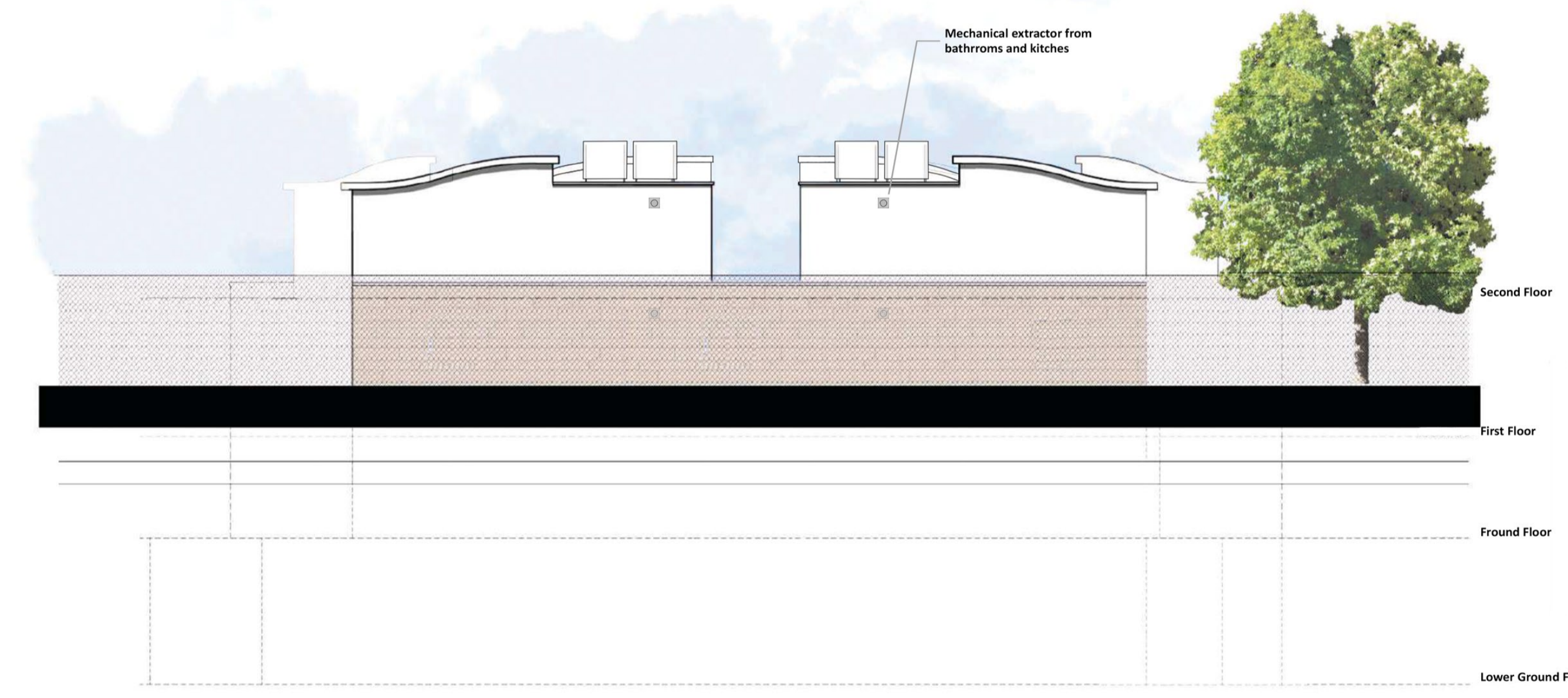
All floor levels on proposed units are the same as existing approved and built units



NORTH EAST ELEVATION



SOUTH EAST ELEVATION



NORTH EAST ELEVATION AS VIEWED FROM HIGHER LEVEL FOOT PATH



NORTH WEST ELEVATION

----- OUTLINE OF PREVIOUSLY APPROVED SCHEME

| Rev No. | Description                          | By | Date     |
|---------|--------------------------------------|----|----------|
| A       | - Amended for resubmission           | JW | 03/03/16 |
| B       | - Amended for resubmission           | JW | 15/07/16 |
| C       | - Amended following queries from LPA | JP | 30/11/16 |
| D       | - Amended for resubmission           | JP | 15/03/17 |

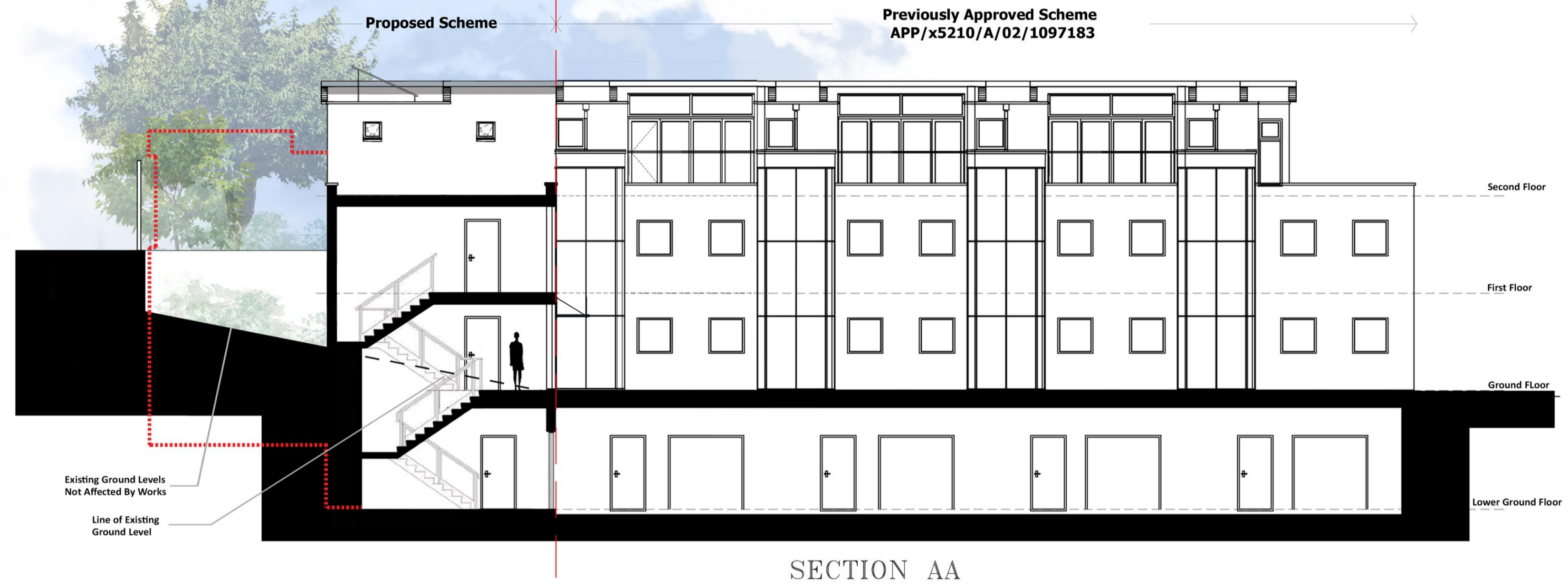
|         |                                     |
|---------|-------------------------------------|
|         |                                     |
| Client: | Four Quarters                       |
| Dwg:    | Sections & Elevations 1             |
| Job No: | 4672                                |
| Dwg No: | P05                                 |
| Date:   | 31/03/2016                          |
| Notes:  | 4 Maisonettes, College Lane, London |
| Scale:  | 1:100@A1                            |

|   |                                   |
|---|-----------------------------------|
| <b>Proctor Watts Cole Rutter</b><br>Chartered Architects & Town Planners<br>Grosvenor House, Bleke Street, Shaftesbury, Dorset, SP7 8AW.<br>Phone: 01747 851881 Fax: 01747 851081<br>mail@pwr.co.uk www.pwr.co.uk | Drawn By: SW/JP<br>Checked By: GC |
|---|-----------------------------------|



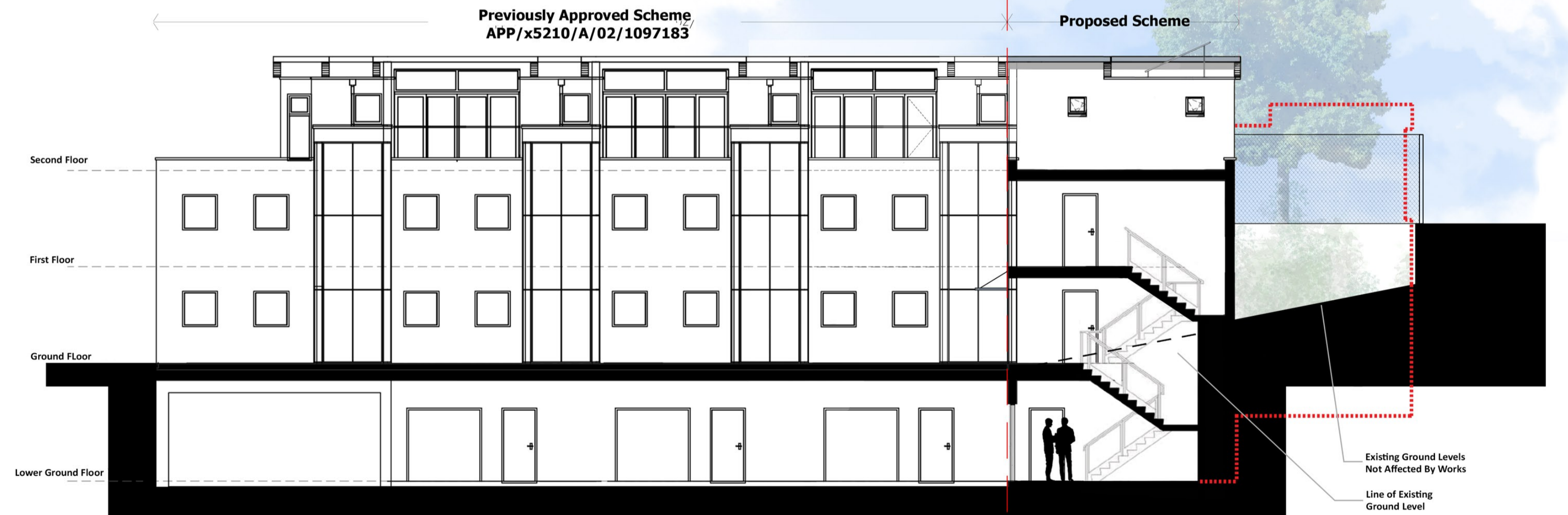
All floor levels on proposed units are the same as existing approved and built units



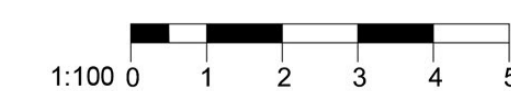
SECTION AA



SECTION BB



SECTION CC



| Rev No. | Description                          | By | Date     |
|---------|--------------------------------------|----|----------|
| A       | - Amended for resubmission           | JW | 03/03/16 |
| B       | - Amended for resubmission           | JW | 15/07/16 |
| C       | - Amended following queries from LPA | JP | 30/11/16 |
| D       | - Amended for resubmission           | JP | 15/03/17 |

|                              |                 |   |
|------------------------------|-----------------|---|
| Client: Four Quarters        |                 | Drawn By: SW/JP                           |
| Dwg: Sections & Elevations 2 |                 | Checked By: GC                            |
| Job No: 4672                 | Dwg No: P06     | Notes: 4 Maisonnets, College Lane, London |
| Date: 13/10/2015             | Scale: 1:100@A1 |   |

**Proctor Watts Cole Rutter**  
 Chartered Architects & Town Planners  
 Grosvenor House, Bleke Street, Shaftesbury, Dorset, SP7 8AW.  
 Phone: 01747 851881 Fax: 01747 851081  
 mail@pwcr.co.uk www.pwcr.co.uk

OUTLINE OF PREVIOUSLY APPROVED SCHEME .....