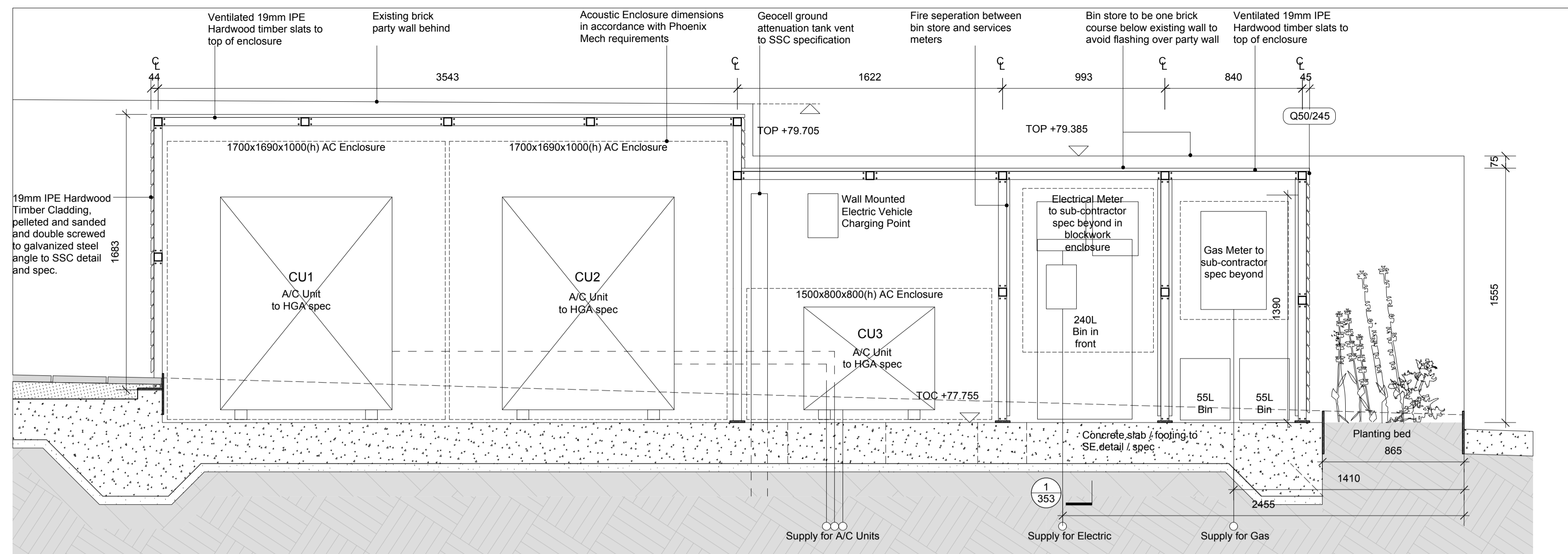
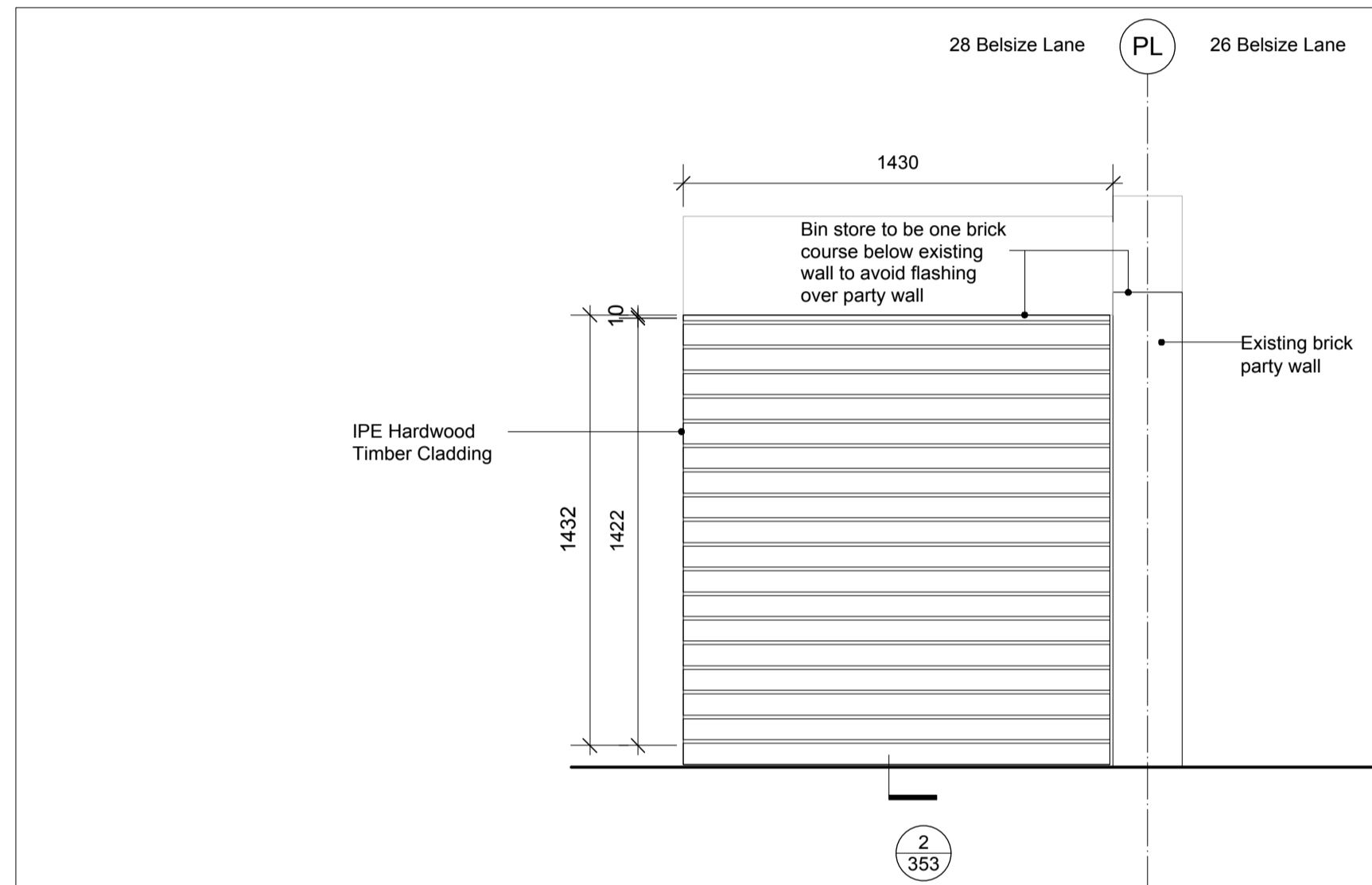


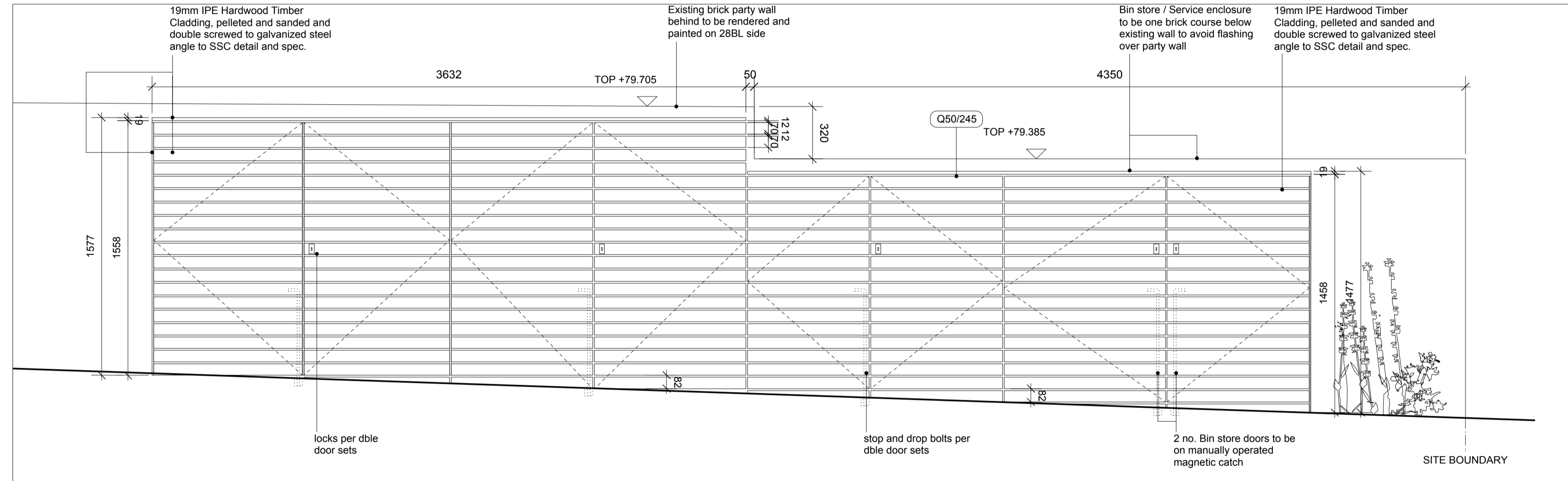
**1 Bin Store / Services Enclosure Section 1**



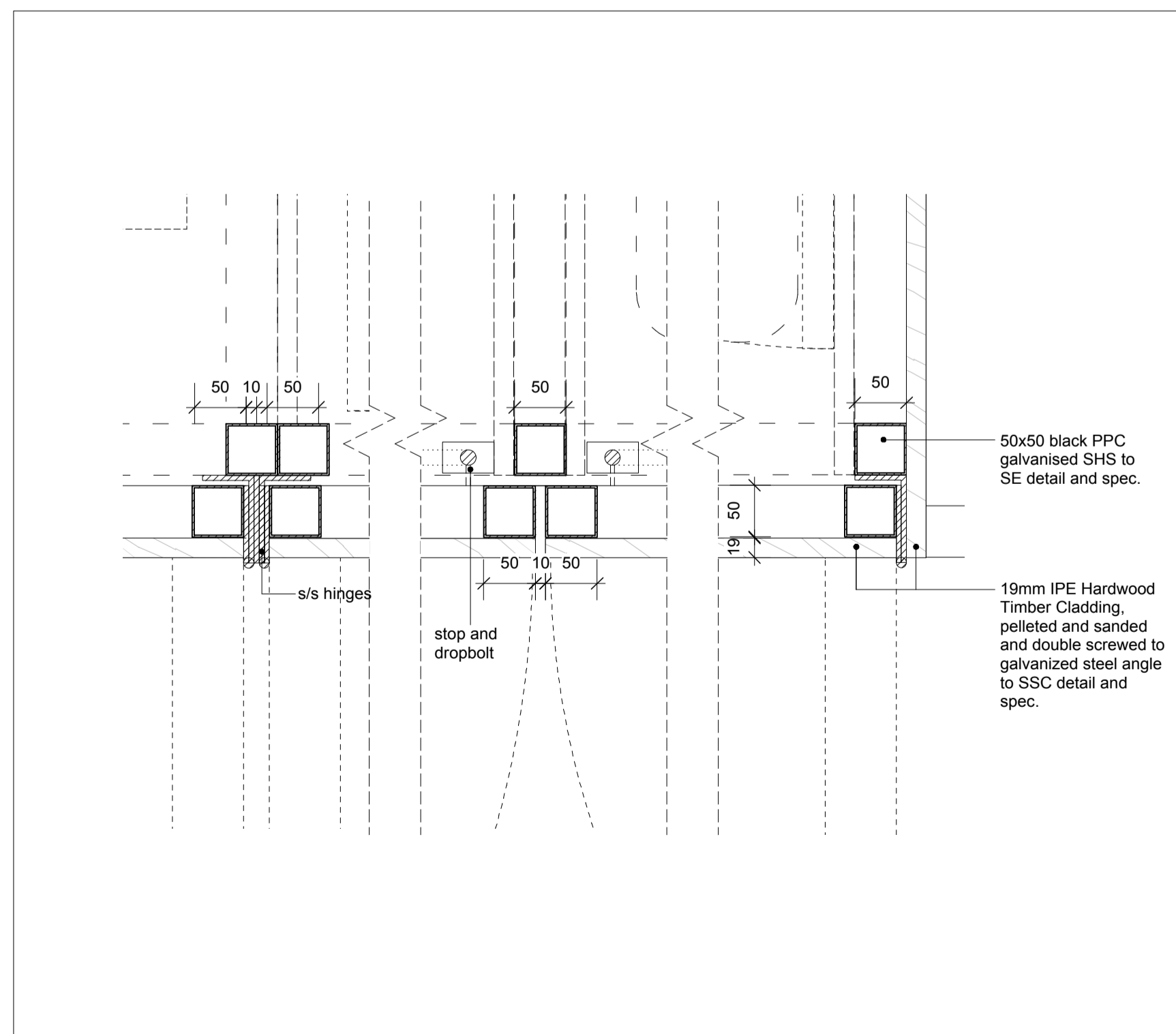
**2 Bin Store / Services Enclosure Section 2**



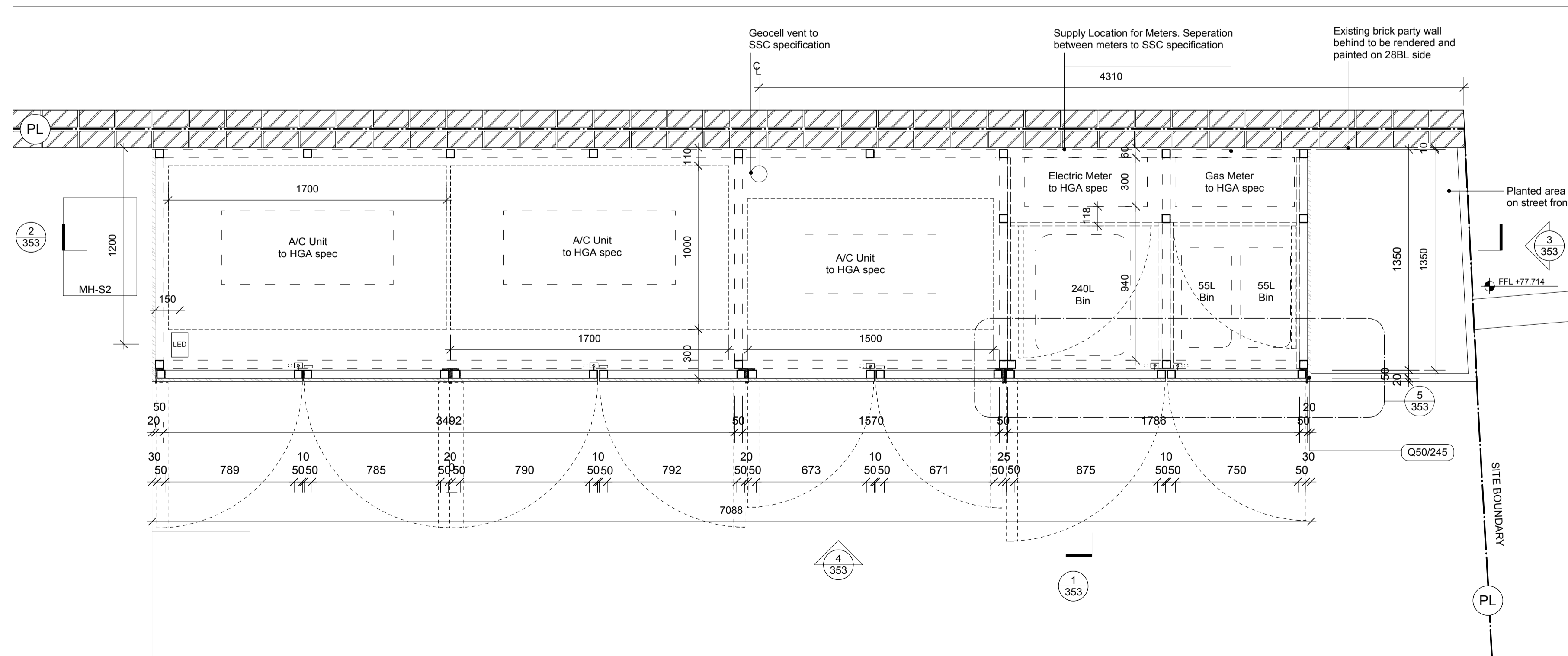
**3 Bin Store / Services Enclosure South Elevation**



**4 Bin Store / Services Enclosure West Elevation**



**5 Bin Store / Services Enclosure Plan Details 1:5**



**6 Bin Store / Services Enclosure Plan**

Notes		
(E20 / 630) Fair Faced Concrete	(L20 / 460) Frameless Glass Door	(F20 / 630) Frameless Glass Door FR Sliding Pocket Door
(E40 / 320) Hydrophobic Waterstops	(L20 / 465) Door FR Sliding Pocket Door	(F10 / 525) Pivotal Pocket Door
(E41 / 110) Concrete Screed	(L20 / 525) Concrete Blockwork	(L20 / 526) S/S Kickplate
(F10 / 110) Facing Brickwork	(L20 / 630) Concrete Blockwork	(L30 / 260) MPSS
(F30 / 132) Weep Hole	(L30 / 261) Full Fill Cavity Insulation	(L30 / 262) S/S Kickplate
(F30 / 150) Full Fill Cavity Insulation	(L30 / 262) DPC	(L30 / 550) Glass Balustrade - External
(F30 / 330) Copper Cladding FF	(L30 / 555) Copper Cladding Shingles	(L40 / 550) Mirror
(H73 / 135) Copper Cladding Dormer	(L40 / 550) Gutter Lining	(M10 / 115) Levelling Screenshot
(H73 / 210) Gutter Lining	(M10 / 180) Copper Coping	(M40 / 111) Wall Tiling
(H73 / 365) Copper Coping	(M40 / 111) Cold Applied Tanking	(M40 / 115) Floor Tiling
(J10 / 110) Tanking to Retaining Walls	(M40 / 116) Cold Applied Damp Proofing	(M40 / 120) Ext. Stone Paving
(J30 / 140) Inverted Roof Coating	(M40 / 120) Inverted Roof VCL	(M51 / 110) Mosaic Tiling
(J31 / 130) Inverted Roof VCL	(M60 / 110) Inverted Roof Insulation	(M60 / 120) Carpeting
(J31 / 340) Inverted Roof Insulation	(M60 / 110) Cavity Drain Walls	(M60 / 120) Emulsion Paint
(J40 / 290) Cavity Drain Walls	(M60 / 120) Cavity Drain Floors	(M60 / 160) Moisture Resistant Paint
(J40 / 291) Cavity Drain Floors	(M60 / 160) Waterproof Membrane	(M61 / 160) Wood Stain
(J40 / 297) Waterproof Membrane	(M61 / 160) Bitumen Membrane	(N10 / 110) Floor Coating
(J40 / 298) Bitumen Membrane	(N10 / 111) Foamsglass Insulation	(N10 / 112) Intumescent Paint
(J41 / 110) Foamsglass Insulation	(N10 / 111) Single Ply Build Up	(N10 / 111) Wardrobe
(J41 / 430) Single Ply Build Up	(N10 / 112) Single Ply Roof VCL	(N10 / 112) Laundry Room
(J42 / 110) Single Ply Roof VCL	(N10 / 115) Waterproof Membrane	(N10 / 115) Timber Cladding
(J42 / 395) Waterproof Membrane	(N10 / 116) Roof Insulation	(N10 / 116) Acoustic Wall Paneling
(J42 / 400) Roof Insulation	(N10 / 112) Roof Insulation Type C	(N10 / 120) Window Reveal
(J42 / 410) Roof Insulation Type C	(N10 / 115) Partition Type 5A	(N10 / 300) Entrance Mat
(K10 / 115) Partition Type 5A	(N13 / 300) Partition Type 5B	(N13 / 300) WC & Cistern
(K10 / 116) Partition Type 5B	(N13 / 336) Partition Type 5C	(N13 / 336) Wash Basin - 3
(K10 / 117) Partition Type 5C	(N13 / 337) Partition Type 5D	(N13 / 337) Wash Basin - 5
(K10 / 118) Partition Type 5D	(N13 / 338) Access Panels	(N13 / 338) Wash Basin - 4
(K10 / 430) Access Panels	(N13 / 341) Wall Lining System	(N13 / 341) Wash Basin - 1/2
(K10 / 145) Wall Lining System	(N13 / 375) Wall Lining - Furrings	(N13 / 375) Shower
(K10 / 175) Wall Lining - Furrings	(N13 / 431) Wall Lining - Furrings External Fire Line	(N13 / 431) Toilet Brush holder
(K10 / 176) Wall Lining - Furrings External Fire Line	(N13 / 433) Wall Lining - Dabs	(N13 / 433) Toilet Roll Holder
(K10 / 185) Wall Lining - Dabs	(N13 / 355) Fireline	(N13 / 355) Bath - 1
(K10 / 210) Fireline	(N13 / 356) Suspended Ceiling	(N13 / 356) Bath - 2
(K10 / 220) Suspended Ceiling	(N13 / 175) Plywood	(N13 / 175) Shower Screen
(K11 / 815) Plywood	(N13 / 885) Supalux	(N13 / 370) Steam Room Door
(K11 / 885) Supalux	(P10 / 100) Wood Flooring	(P10 / 100) Insulation Celotex
(K21 / 110) Wood Flooring	(P10 / 120) Aluminium Casement Windows	(P10 / 120) Ext. Basement Insulation
(L10 / 330) Aluminium Casement Windows	(P10 / 190) Aluminium Sliding Windows	(P10 / 190) Ext. Wall Insulation
(L10 / 331) Aluminium Sliding Windows	(P10 / 195) Aluminium Window Reveal	(P10 / 195) Steel Frame Insulation
(L10 / 332) Aluminium Window Reveal	(P10 / 198) Aluminium Window Fixed	(P10 / 198) U/floor Insulation
(L10 / 333) Aluminium Window Fixed	(P10 / 310) Glazed Entrance Door	(P10 / 310) VCL Wall
(L10 / 334) Glazed Entrance Door	(P10 / 320) MPSS - External	(P10 / 320) Breather Membrane
(L10 / 340) MPSS - External	(P20 / 150) Aluminium Rooflight	(P20 / 150) Skirting Board
(L10 / 460) Aluminium Rooflight	(P21 / 471) Walk on Rooflight	(P21 / 471) Floor Spring
(L10 / 470) Walk on Rooflight	(Q10 / 160) Internal Glazed Screen	(Q10 / 160) Metal Edging
(L10 / 560) Internal Glazed Screen	(Q40 / 220) Timber Doorset Typ 1 Non FR	(Q40 / 220) Steel Fencing
(L20 / 410) Timber Doorset Typ 1 Non FR	(Q40 / 570) Timber Doorset Typ 1 30mins FR	(Q40 / 570) Steel Gates
(L20 / 411) Timber Doorset Typ 1 30mins FR	(Q55 / 380) Timber Doorset Typ 3 Glass FR	(Q55 / 380) Timber Decking
(L20 / 412) Timber Doorset Typ 3 Glass FR		

Revision	Date	Notes
1	15/03/17	For Planning Condition 09 Discharge

**Notes**

For all soft landscape design and specification refer to TO Studio, Landscape Architect drawings and design specification

Indicative Drainage locations shown. Refer to HGA consultant drawings for all underground drainage and connection details

All MH covers to incorporate recessed lids

AC + Services enclosure ventilation requirements to be agreed with SSC prior to construction

- Do not scale drawings. All dimensions to be checked on site. Errors to be reported to architect. To be read in conjunction with all relevant architects services and engineers drawings.
- Contractors, sub-contractors and suppliers to verify any critical dimensions on site prior to fabrication of any building element. Any discrepancies to be reported to the architect.
- This drawing to be read in conjunction with all relevant specifications, engineers and specialists consultants information and any discrepancies reported prior to installation.



Project	: 28 Belsize Lane
Title	: Bin Store & Services Enclosure
Client	: Vivien & Edmund Bradley
Scale	: 1:20 (A1), 1:40 (A3)
Date	: 11. 11. 2014
Drawn By	: RM / JK
Drawing	: 2214_PL1353
Revision	: 1

FOR APPROVAL