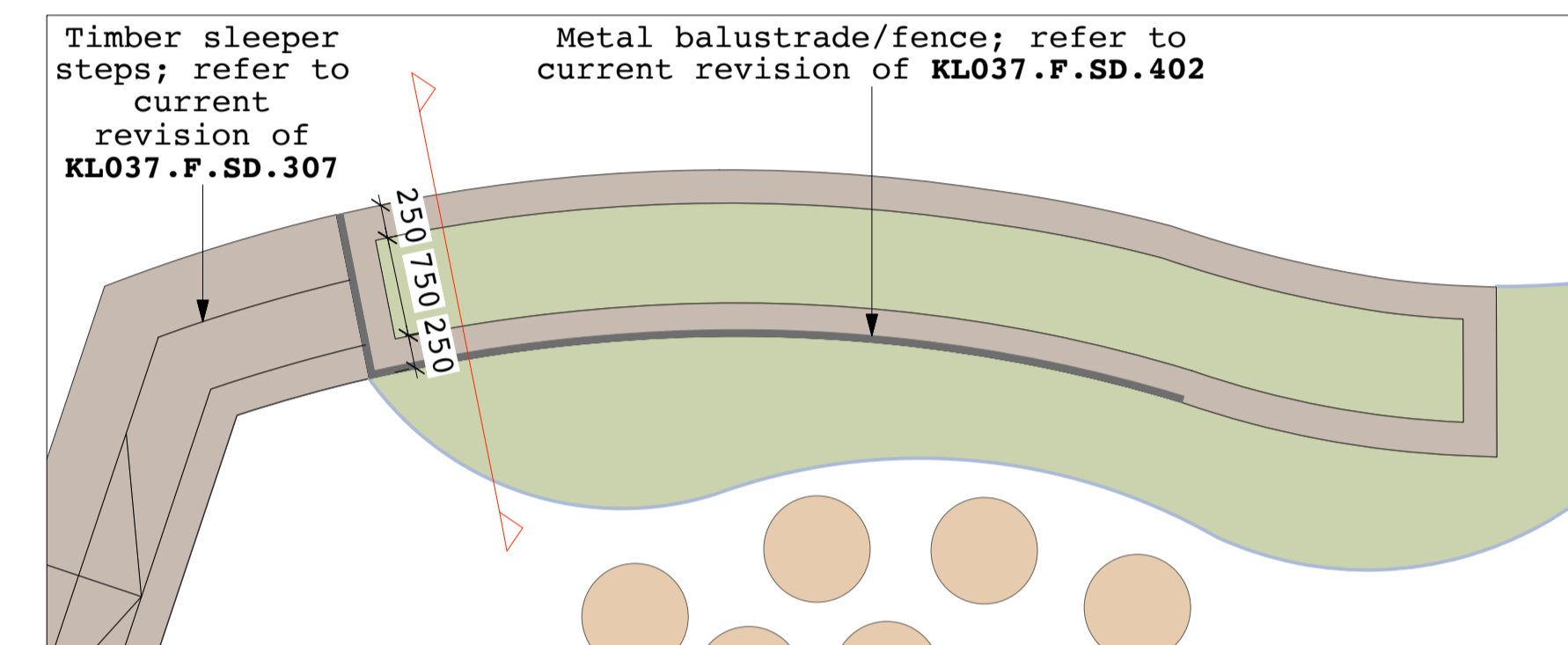
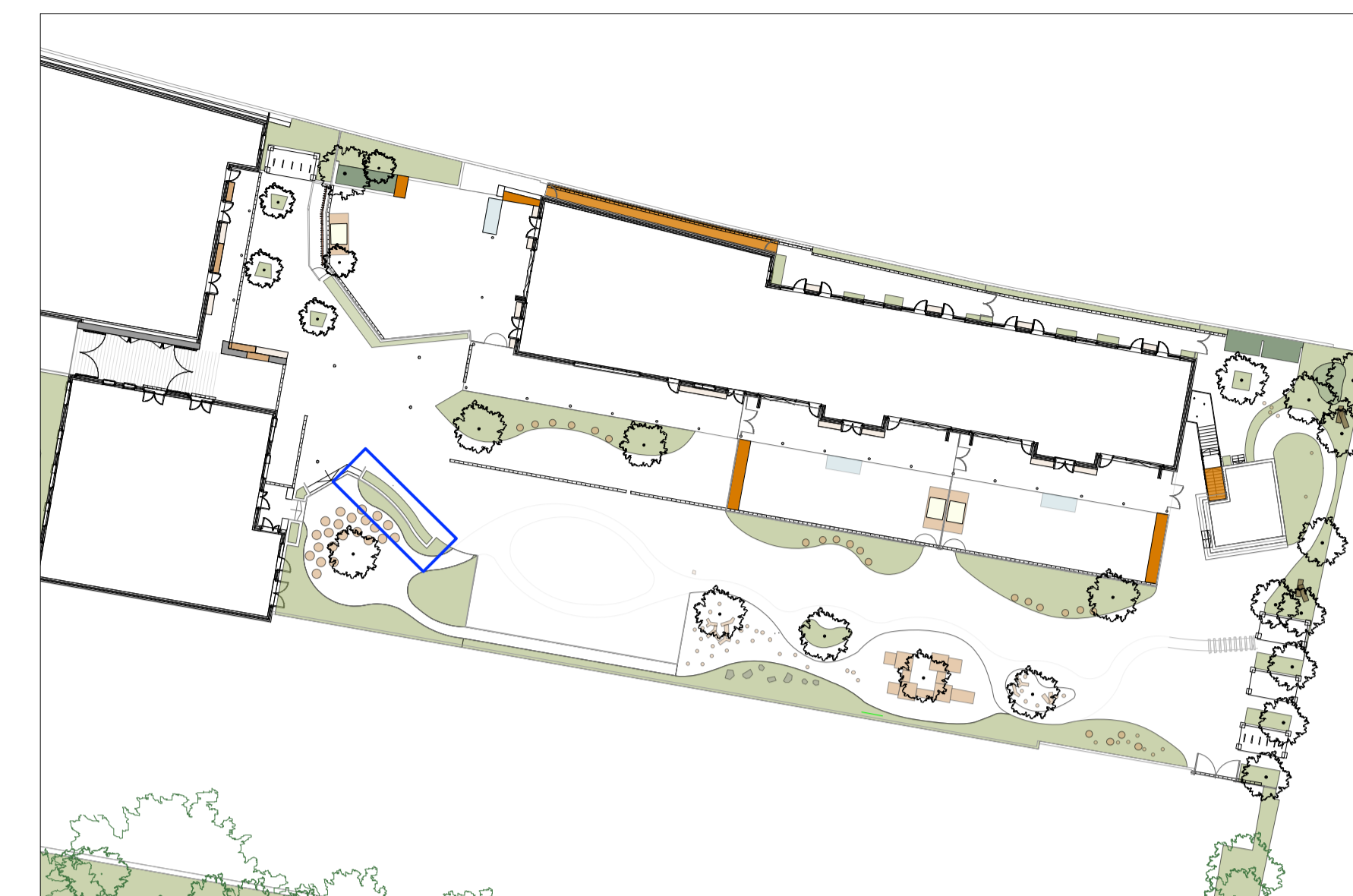


**PLANTER TO READING CIRCLE
(MAIN PLAYGROUND)**

LOCATION PLAN 1:500

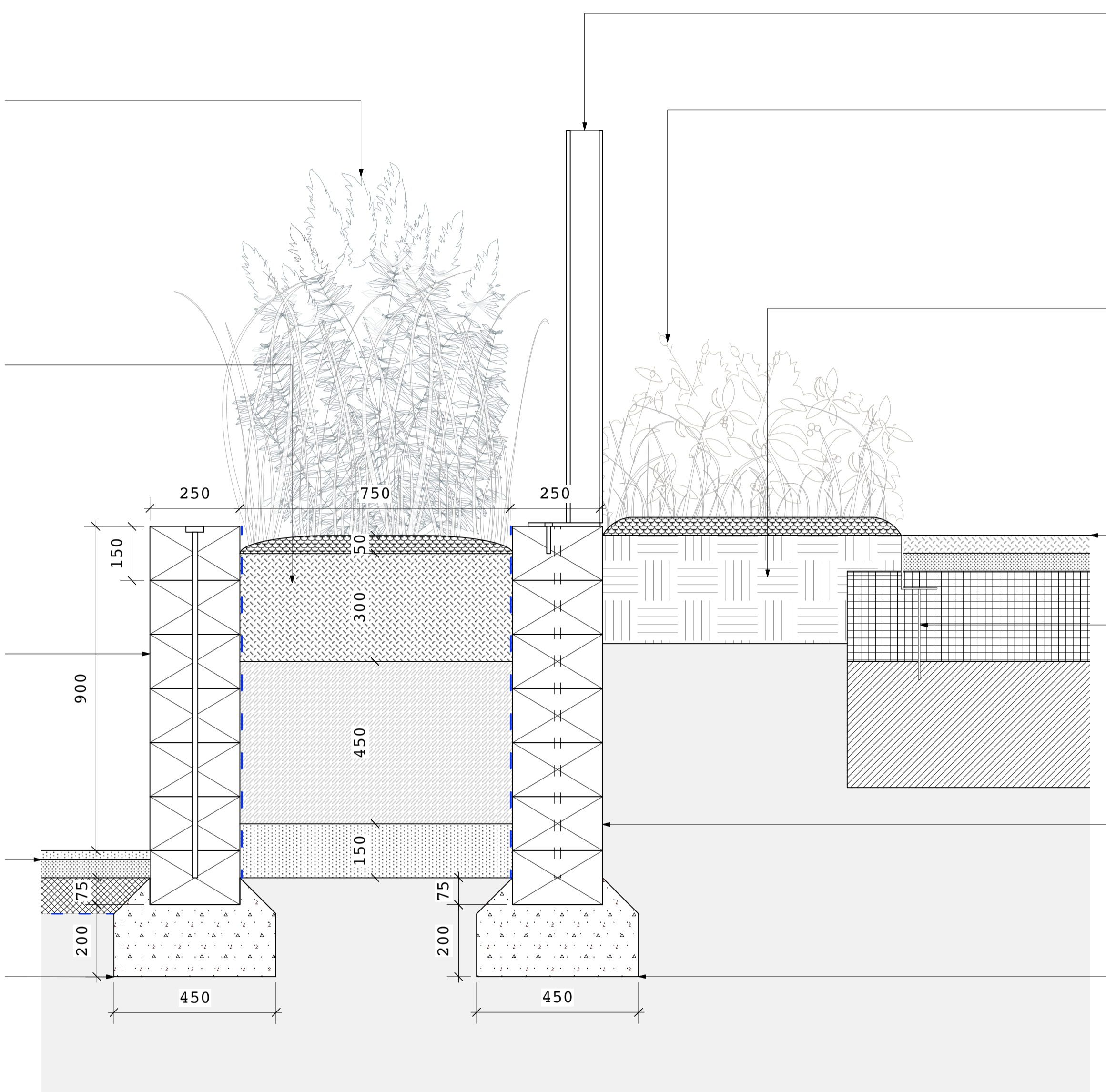


Planter, 1:50

Planting; refer to current revision of **KL037.F.07.PP1**

PLANTER

- 50mm approved organic bark mulch.
- 300mm imported good quality topsoil incorporating 10% organic compost, seasure soil improver and Broadleaf P4 agricultural polymer crystals.
- 450mm sub-soil, as specified
- 150mm free-draining pea gravel layer



- Timber sleeper edge to planter
- 150 x 250mm pressure treated softwood sleepers
 - Bolted through with 10mm stainless steel dowells
 - Timber to be treated with 2x coats RIW, where in contact with soil
- RIW coating

Pedestrian asphalt surface; refer to current revision of **KL037.F.SD.101**

GEN 1 concrete foundation

Metal balustrade/fence, with plat fixing to timber sleepers; refer to current revision of **KL037.F.SD.402**

Planting; refer to current revision of **KL037.F.07.PP1**

Soft landscape planting

- 50mm approved organic bark mulch.
- 300mm imported good quality topsoil incorporating 10% organic compost, seasure soil improver and Broadleaf P4 agricultural polymer crystals.

Bonded rubber mulch surface; refer to current revision of **KL037.F.SD.103**

Aluminium edge; refer to current revision of **KL037.F.SD.303**

- Timber sleeper edge to planter
- 150 x 250mm pressure treated softwood sleepers
 - Bolted through with 10mm stainless steel dowells
 - Timber to be treated with 2x coats RIW, where in contact with soil

RIW coating ---

GEN 1 concrete foundation

Notes:

- Soil analysis to be submitted for topsoil and subsoil, for approval
- Refer to current revision of Planting Plan (**KL037.F.07.PP1**) and Planting Schedule (**KL037.F.Doc02.PS2**) for plant species and sizes.

Products:

Seasure Seaweed Soil Builder supplied by *collier-turf-care.co.uk* @ 1500g/m3

Broadleaf P4 agricultural polymer supplied by *agripol.co.uk* @ 1kg/m3

RIW coating by *riw.co.uk*

all of the above, or equal approved.

JCLA

3A Iliffe Yard
LONDON SE17 3QA
Telephone
+44 (0)207 703 3270

www.jcla.co.uk

Notes

- Do not scale from drawings.
- To be read in conjunction with all relevant Architects', Services and Structural Engineers' drawings.
- All existing site, tree and building information has been compiled from different sources.
- All dimensions to be checked on site.

Revisions

**PLANNING CONDITION
ISSUE**

Project	Kingsgate Liddell	Revision	*
Project No.	KL037		
Client	Camden council		
Date	18.01.2017		
Scale	1:10 @ A1 / 1:20 @ A3		
Drawing Name.	Planter to reading circle (main playground)		
Dwg No.	KL037.F.SD.613		