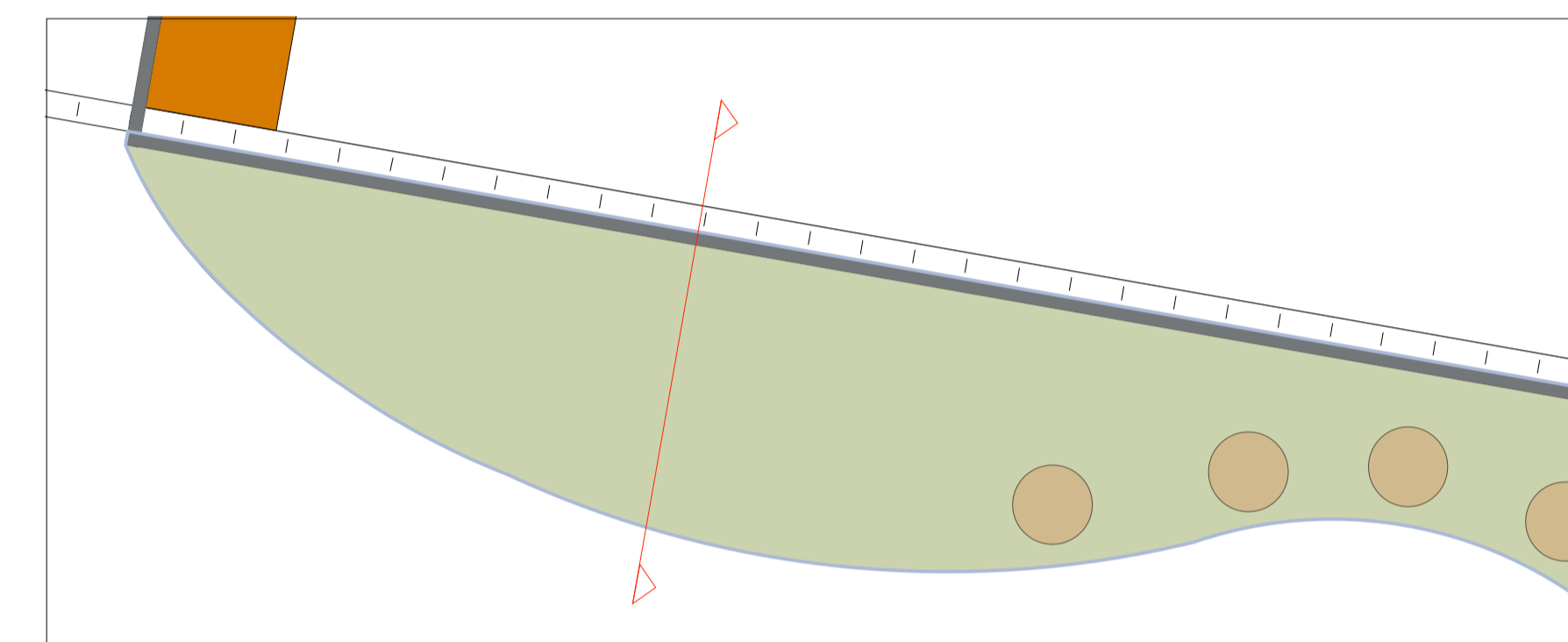
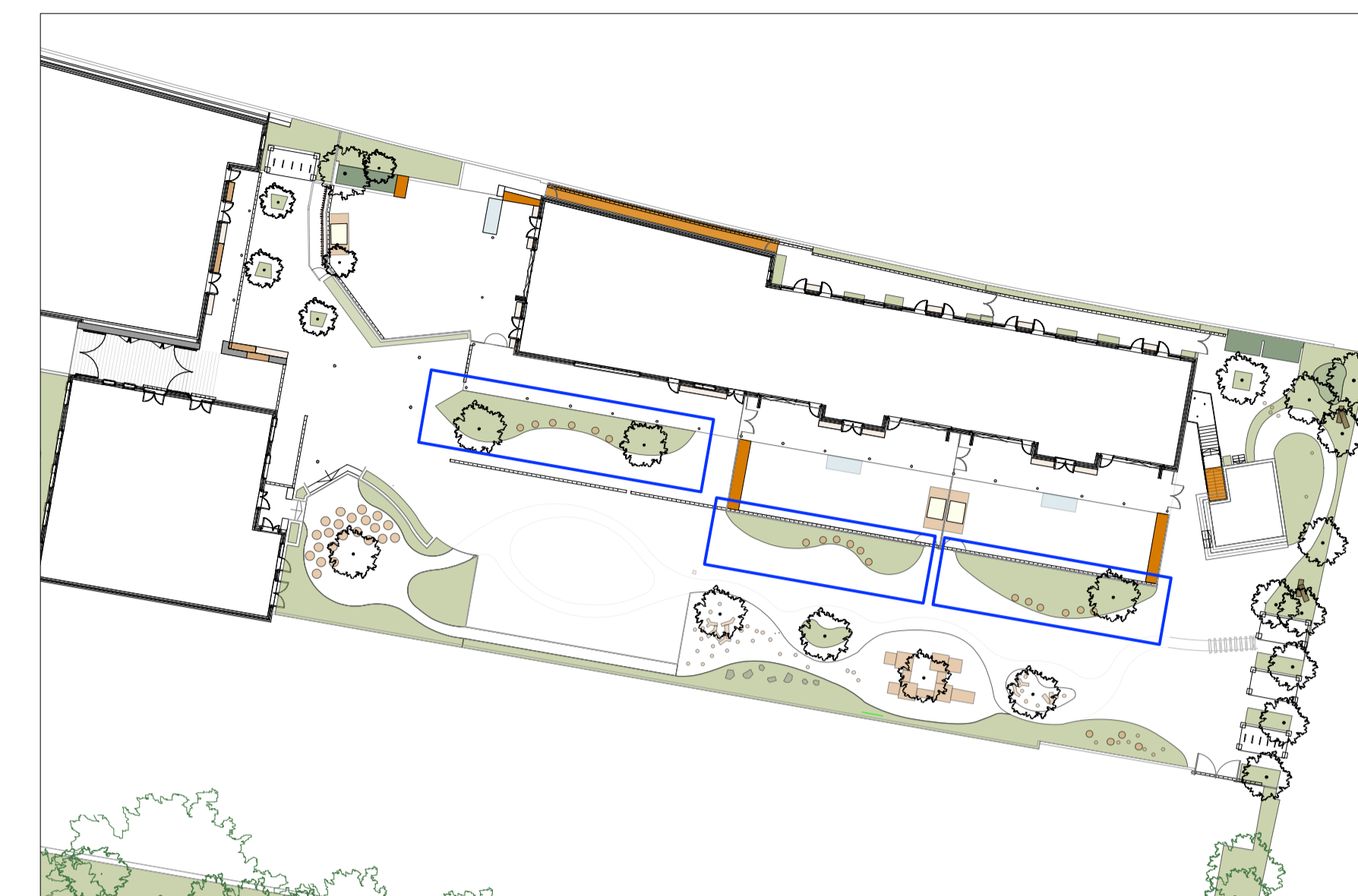


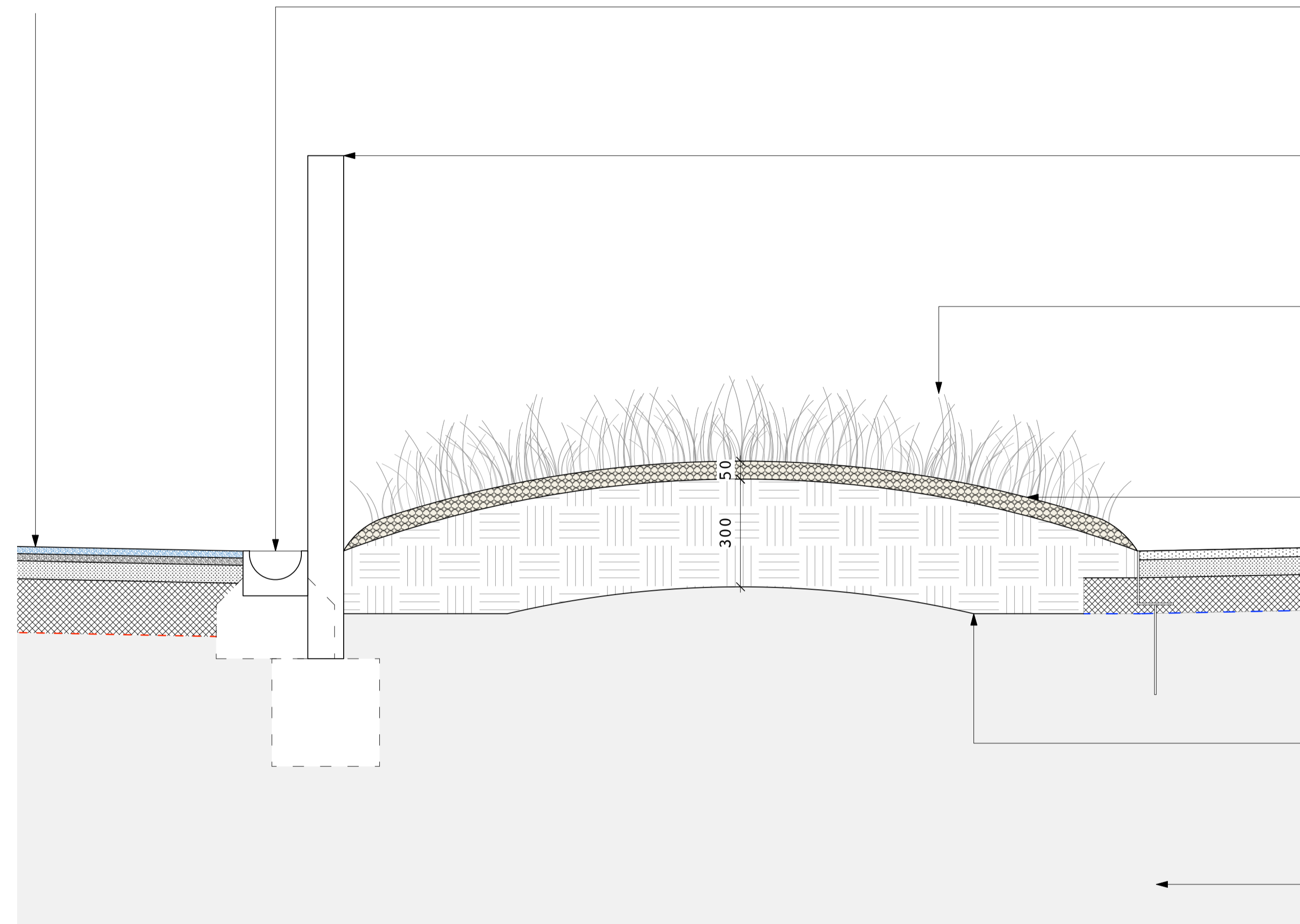
**PLANTED MOUNDS
(MAIN PLAYGROUND)**

LOCATION PLAN 1:500



Planted mound, 1:50

Wet pour surface: refer to current revision of **KL037.F.SD.102**



Drainage channel; refer to drainage engineer's information

Balustrade; refer to current revision of **KL037.F.SD.402**

Soft landscape; refer to current revision of planting plan **KL037.F.07.PP1**

50mm approved bark mulch, as specified

Aluminium edge; refer to current revision of **KL037.F.SD.303**
Pedestrian asphalt surface; refer to current revision of **KL037.F.SD.101**

Backfill: Top 400mm imported topsoil:
- Supplemented by 10% approved compost to BSI PAS 100
- Soil conditioner: seanure soil improver @ 1500g/m³ and Broadleaf P4 agricultural polymer crystals @ 1kg/m³, as specified.

Formation, well compacted; domed to create mounded surface

Notes:

- Soil analysis to be submitted for topsoil and subsoil, for approval
- Refer to current revision of Planting Plan (**KL037.F.07.PP1**) and Planting Schedule (**KL037.F.Doc02.PS2**) for plant species and sizes.

Products:

Seanure Seaweed Soil Builder supplied by *collier-turf-care.co.uk* @ 1500g/m³
Broadleaf P4 agricultural polymer supplied by *agripol.co.uk* @ 1kg/m³
all of the above, or equal approved.

JCLA

3A Iliffe Yard
LONDON SE17 3QA
Telephone
+44 (0)207 703 3270

www.jcla.co.uk

Notes

- Do not scale from drawings.
- To be read in conjunction with all relevant Architects', Services and Structural Engineers' drawings.
- All existing site, tree and building information has been compiled from different sources.
- All dimensions to be checked on site.

Revisions

**PLANNING CONDITION
ISSUE**

Project	Kingsgate Liddell	Revision	
Project No.	KL037		
Client	Camden council		
Date	18.01.2017		
Scale	1:10 @ A1 / 1:20 @ A3		
Drawing Name.	Planted mound (main playground)		
Dwg No.	KL037.F.SD.612		