

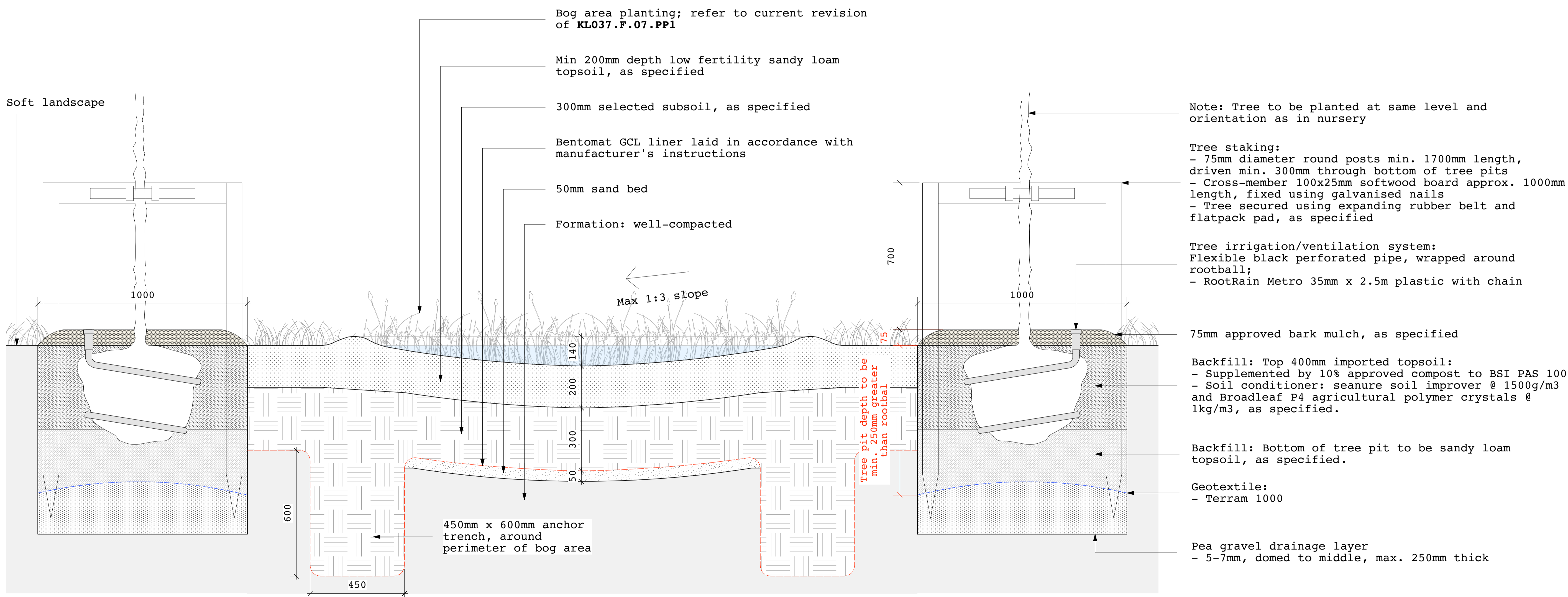
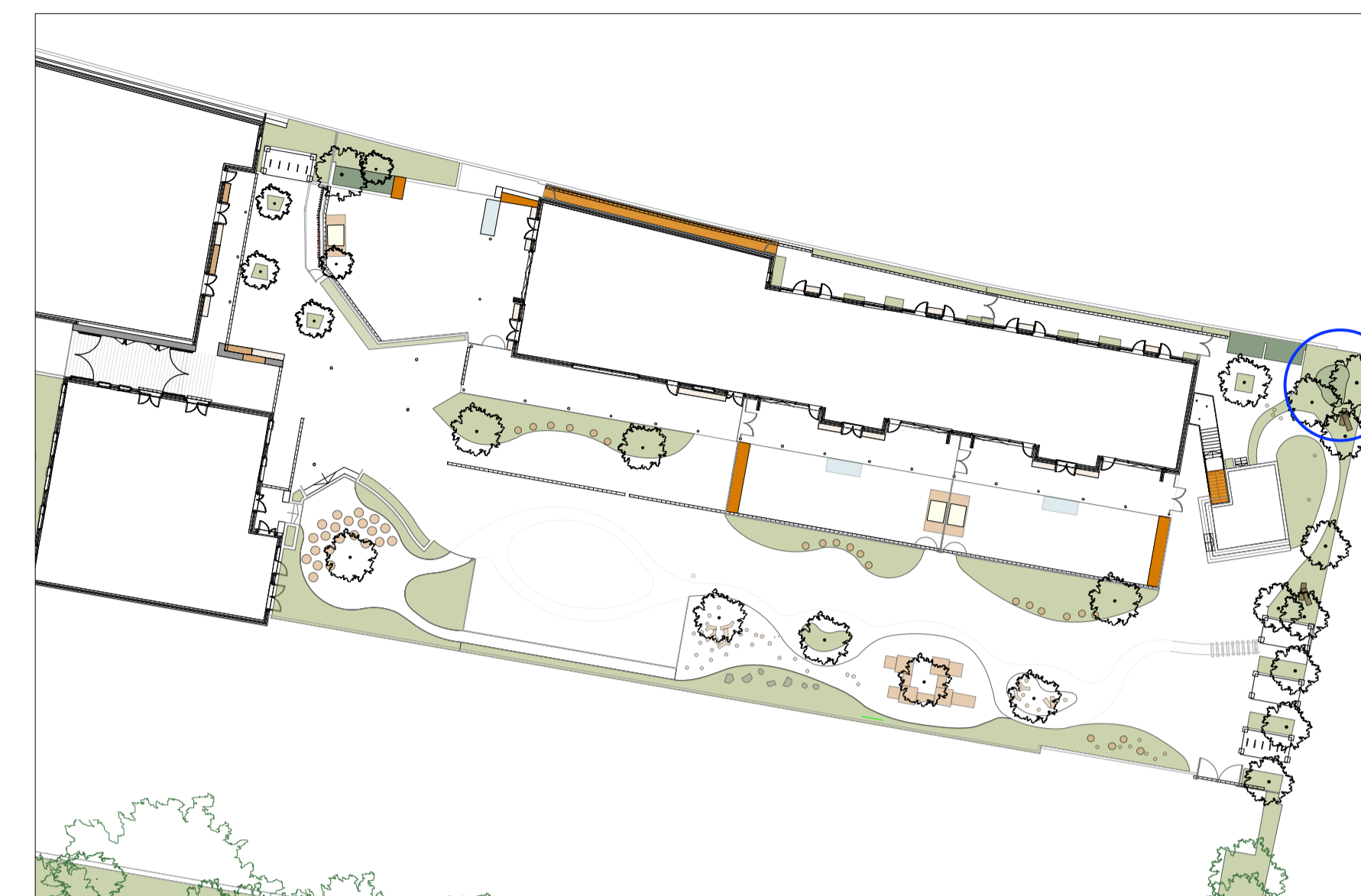
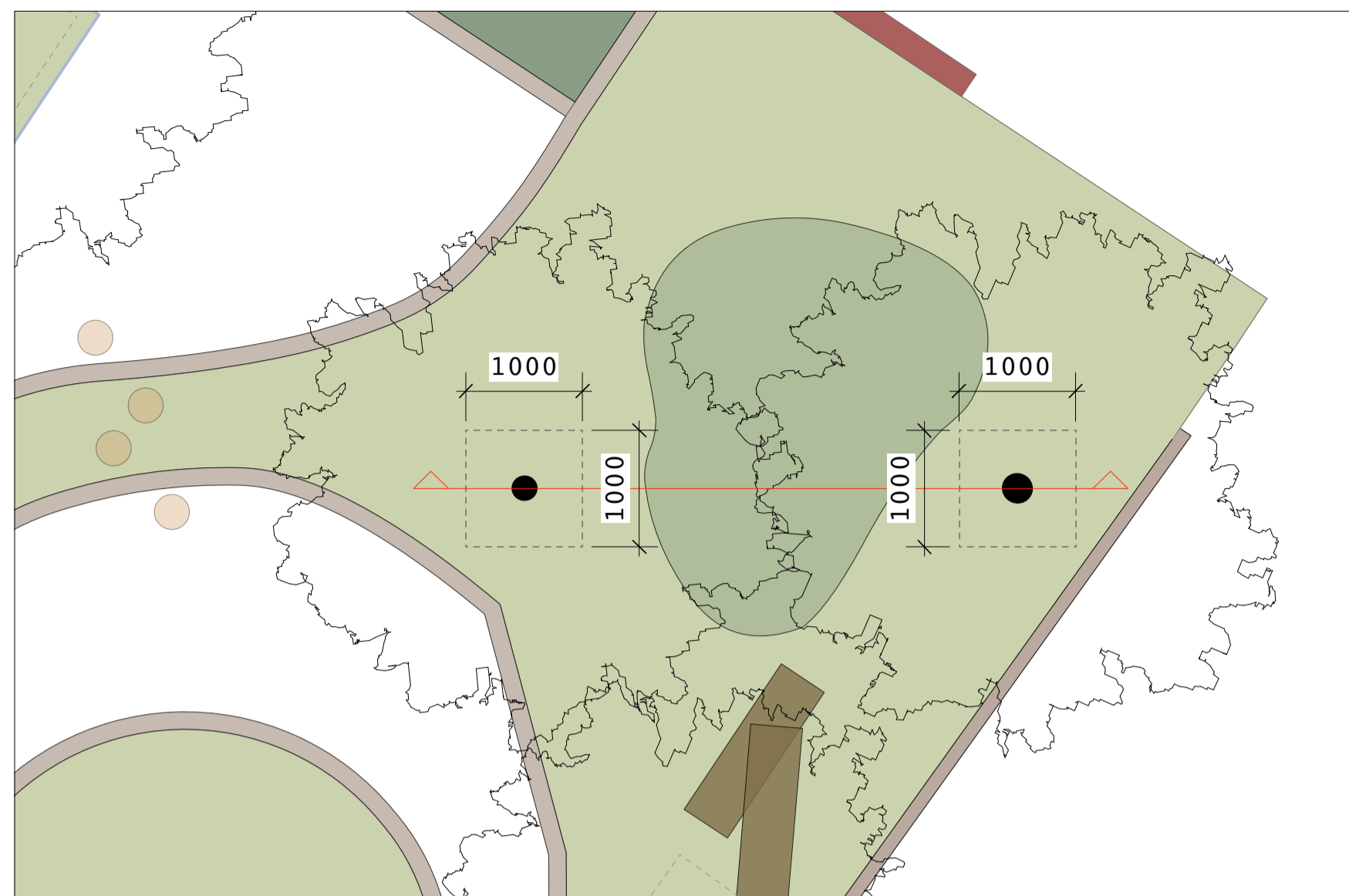
**BOG AREA + ADJACENT TREE PITS  
(SCIENCE GARDEN)**

KEY PLAN 1:50

LOCATION PLAN 1:500

Tree pit, 1:50

----- Tree pit extent, as dimensioned



Note: Tree to be planted at same level and orientation as in nursery

Tree staking:  
 - 75mm diameter round posts min. 1700mm length, driven min. 300mm through bottom of tree pits  
 - Cross-member 100x25mm softwood board approx. 1000mm length, fixed using galvanised nails  
 - Tree secured using expanding rubber belt and flatpack pad, as specified

Tree irrigation/ventilation system:  
 Flexible black perforated pipe, wrapped around rootball;  
 - RootRain Metro 35mm x 2.5m plastic with chain

75mm approved bark mulch, as specified

Backfill: Top 400mm imported topsoil:  
 - Supplemented by 10% approved compost to BSI PAS 100  
 - Soil conditioner: seanure soil improver @ 1500g/m<sup>3</sup> and Broadleaf P4 agricultural polymer crystals @ 1kg/m<sup>3</sup>, as specified.

Backfill: Bottom of tree pit to be sandy loam topsoil, as specified.

Geotextile:  
 - Terram 1000

Pea gravel drainage layer  
 - 5-7mm, domed to middle, max. 250mm thick

Notes:

- Soil analysis to be submitted for topsoil and subsoil, for approval
- Refer to current revision of Tree Planting Plan (KL037.F.02.TP) and Planting Schedule (KL037.F.Doc02.PS2) for tree species and sizes.
- Refer to current revision of Planting Plan (KL037.F.07.PP1) and Planting Schedule (KL037.F.Doc02.PS2) for plant species and sizes.

Products:

- Seanure Seaweed Soil Builder supplied by [collier-turf-care.co.uk](http://collier-turf-care.co.uk) @ 1500g/m<sup>3</sup>
  - Broadleaf P4 agricultural polymer supplied by [agripol.co.uk](http://agripol.co.uk) @ 1kg/m<sup>3</sup>
  - Tree irrigation system; RootRain Metro 35mm x 2.5m plastic with chain From [greenblue.com/gb](http://greenblue.com/gb)
  - Bentomat GCL liner by [bentomat.co.uk](http://bentomat.co.uk)
- all of the above, or equal approved.

**JCLA**

3A Iliffe Yard  
 LONDON SE17 3QA  
 Telephone  
 +44 (0)207 703 3270

[www.jcla.co.uk](http://www.jcla.co.uk)

Notes

- Do not scale from drawings.
- To be read in conjunction with all relevant Architects', Services and Structural Engineers' drawings.
- All existing site, tree and building information has been compiled from different sources.
- All dimensions to be checked on site.

Revisions

**PLANNING CONDITION  
ISSUE**

Project	Kingsgate Liddell	Revision	*
Project No.	KL037		
Client	Camden council		
Date	18.01.2017		
Scale	1:10 @ A1 / 1:20 @ A3		
Drawing Name.	Bog Area + Adjacent Tree pits (Science Garden)		
Dwg No.	KL037.F.SD.611		