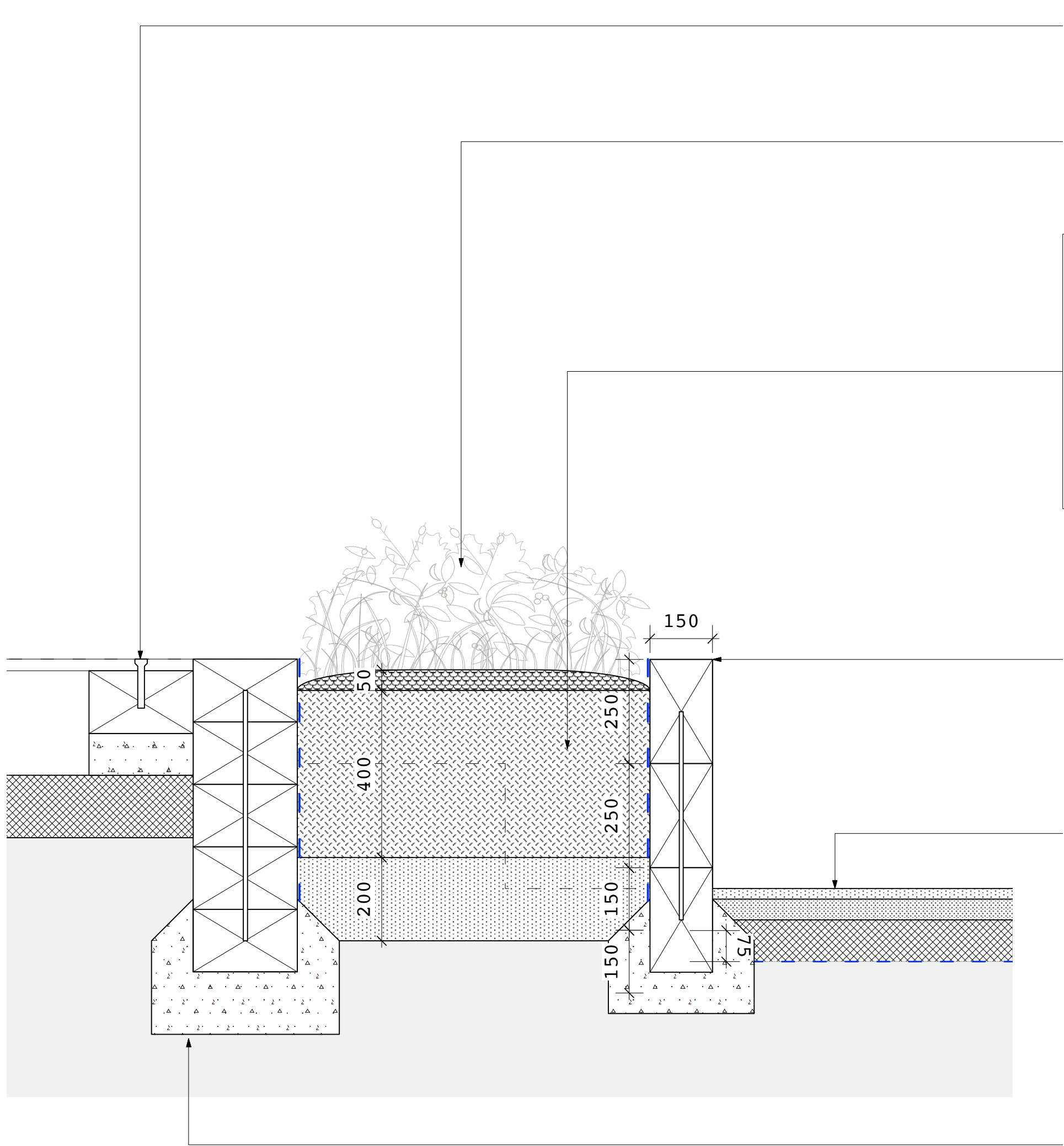


PLANTER ALONG OUTDOOR CLASSROOM PLATFORM  
(SCIENCE GARDEN)



Timber platform, outdoor classroom; refer to current revision of **KL037.F.SD.513**

Planting; refer to current revision of **KL037.F.07.PP1**

PLANTER

- 50mm approved organic bark mulch.
- 400mm imported good quality topsoil incorporating 10% organic compost, seanure soil improver and Broadleaf P4 agricultural polymer crystals.
- 200mm free-draining pea gravel layer

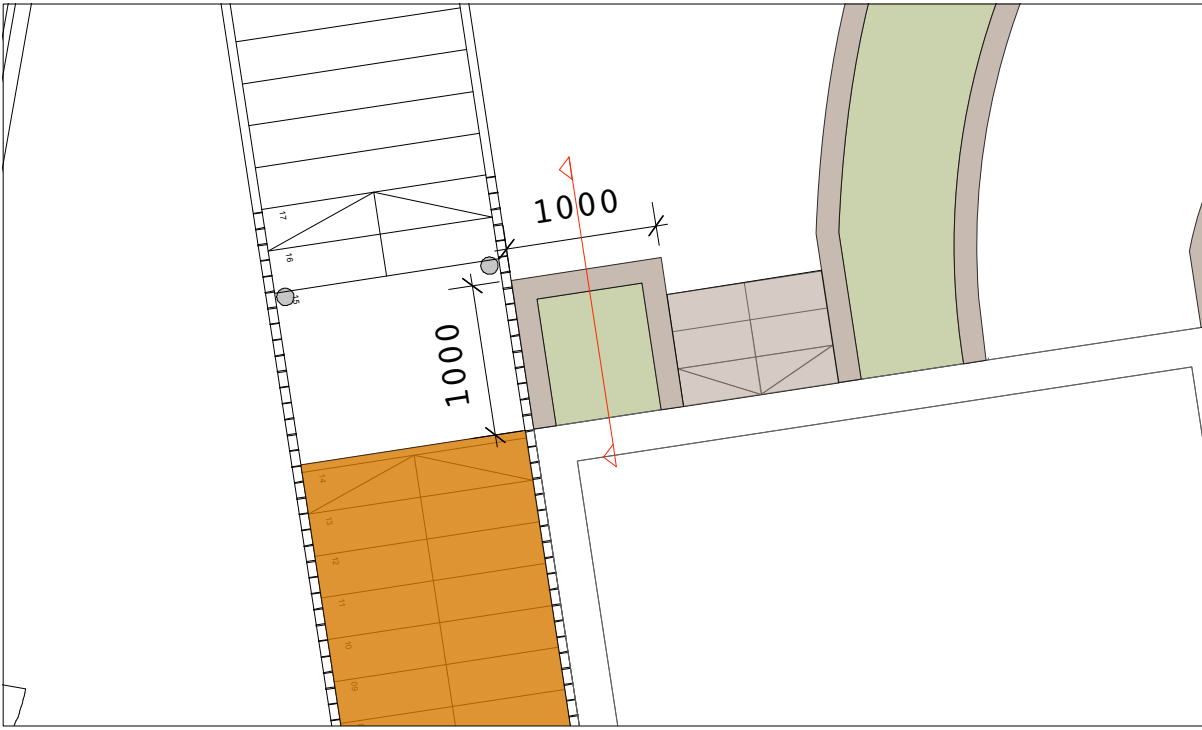
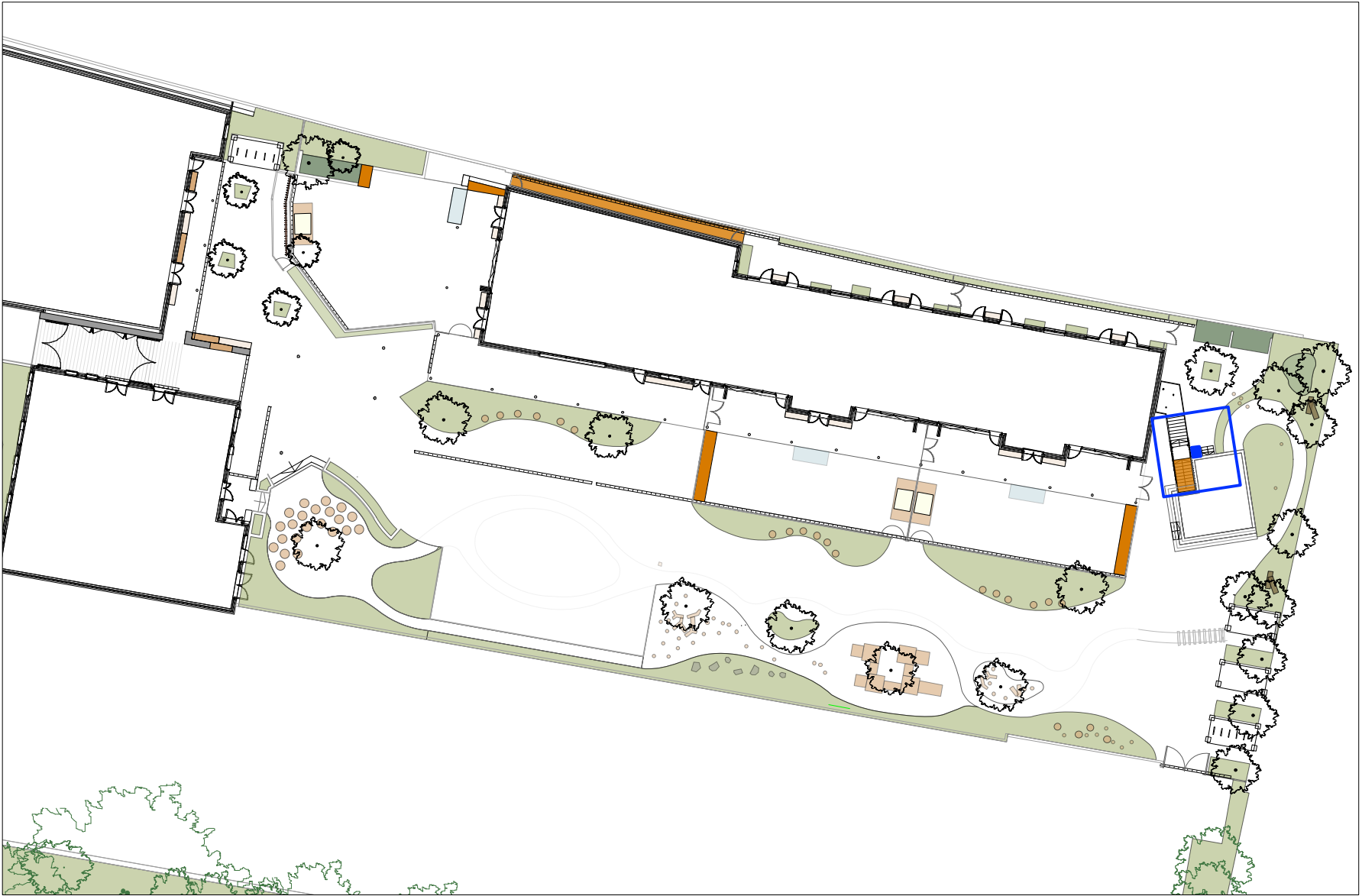
Timber sleeper edge  
- 150 x 150mm pressure treated softwood sleepers  
- Bolted through with 10mm stainless steel dowells  
- Timber to be treated with 2x coats RIW, where in contact with soil

RIW coating - - -

Pedestrian asphalt; refer to current revision of **KL037.F.SD.101B**

Timber platform foundations; refer to current revision of **KL037.F.SD.513**

LOCATION PLAN 1:500



Planter, 1:50

- Notes:
- Soil analysis to be submitted for topsoil and subsoil, for approval
  - Refer to current revision of Planting Plan (**KL037.F.07.PP1**) and Planting Schedule (**KL037.F.Doc02.PS2**) for plant species and sizes.

- Products:
- Seanure Seaweed Soil Builder supplied by *collier-turf-care.co.uk* @ 1500g/m3
  - Broadleaf P4 agricultural polymer supplied by *agripol.co.uk* @ 1kg/m3
  - RIW coating by *riw.co.uk*
  - all of the above, or equal approved.**

JCLA

3A Iliffe Yard  
LONDON SE17 3QA  
Telephone  
+44 (0)207 703 3270

www.jcla.co.uk

- Notes
- Do not scale from drawings.
  - To be read in conjunction with all relevant Architects', Services and Structural Engineers' drawings.
  - All existing site, tree and building information has been compiled from different sources.
  - All dimensions to be checked on site.
- Revisions

PLANNING CONDITION  
ISSUE

Project	Kingsgate Liddell	Revision
Project No.	KL037	
Client	Camden council	
Date	18.01.2017	
Scale	1:10 @ A1 / 1:20 @ A3	
Drawing Name.	Planter along outdoor classroom (science garden)	
Dwg No.	KL037.F.SD.610	