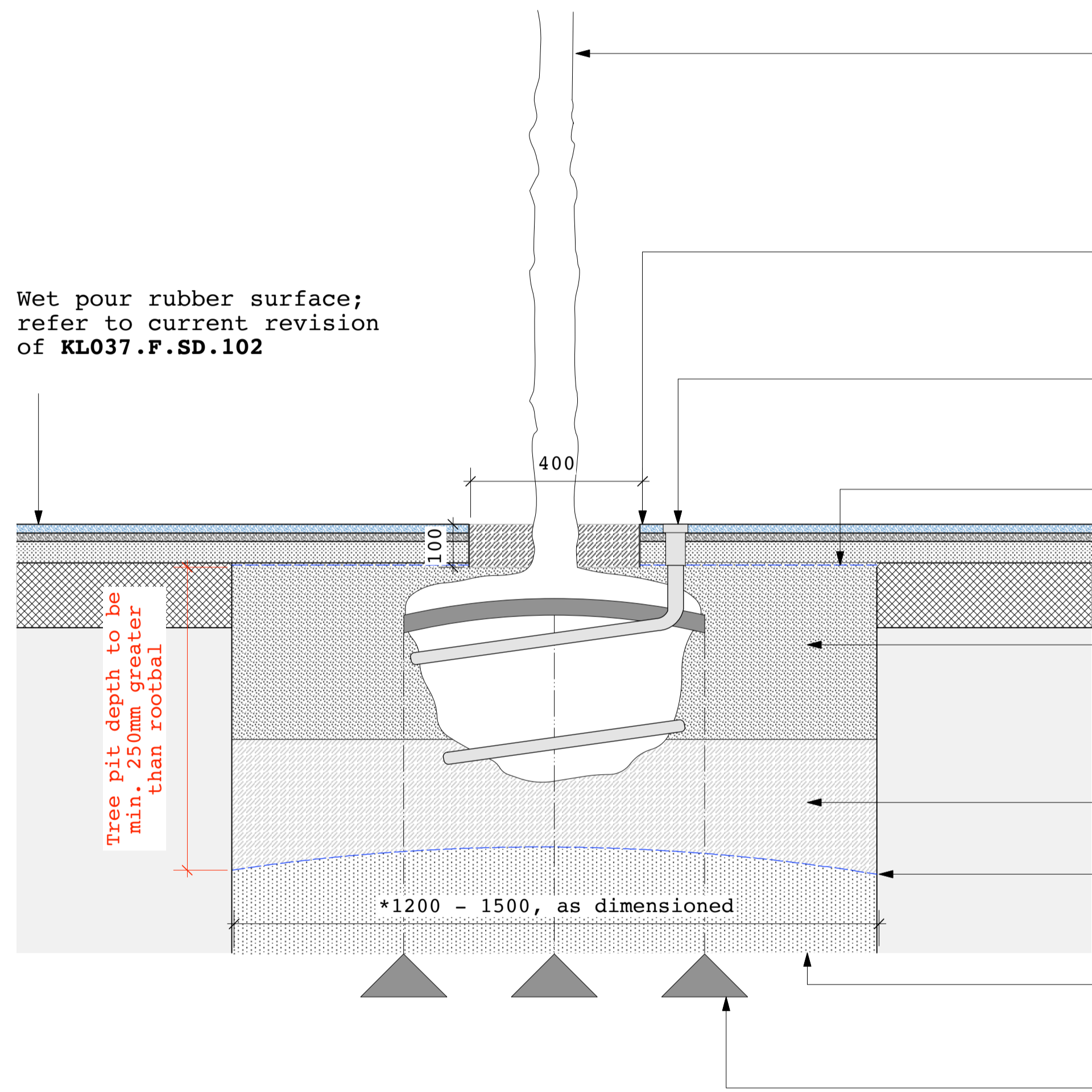
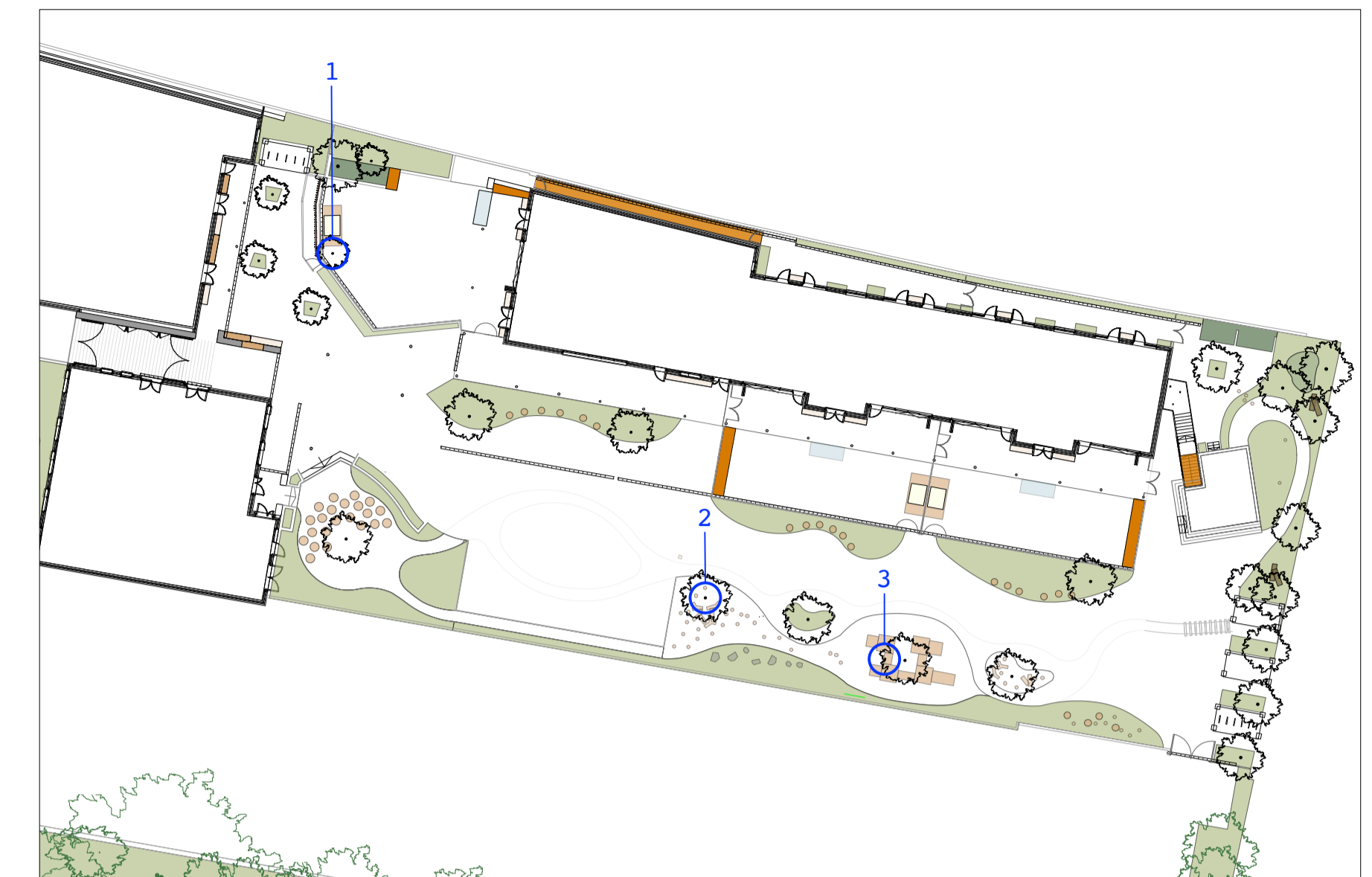


**TREE PIT IN WET POUR RUBBER SURFACE
(SOUTHERN EDGE PLAYGROUND/NURSERY)**

LOCATION PLAN 1:500



Note: Tree to be planted at same level and orientation as in nursery

3mm thick aluminium collar, 400mm diameter, centered on tree trunk
- Filled with approved bark much, as specified

Tree irrigation/ventilation system:
Flexible black perforated pipe, wrapped around rootball;
- RootRain Metro 35mm x 2.5m plastic with chain

Geotextile:
- Terram 1000

Backfill: Top 400mm imported sandy loam topsoil:
- Supplemented by 10% approved compost to BSI PAS 100
- Soil conditioner: seanure soil improver @ 1500g/m3 and Broadleaf P4 agricultural polymer crystals @ 1kg/m3, as specified.

Backfill: Bottom of tree pit to be sandy loam topsoil, as specified.

Geotextile:
- Terram 1000

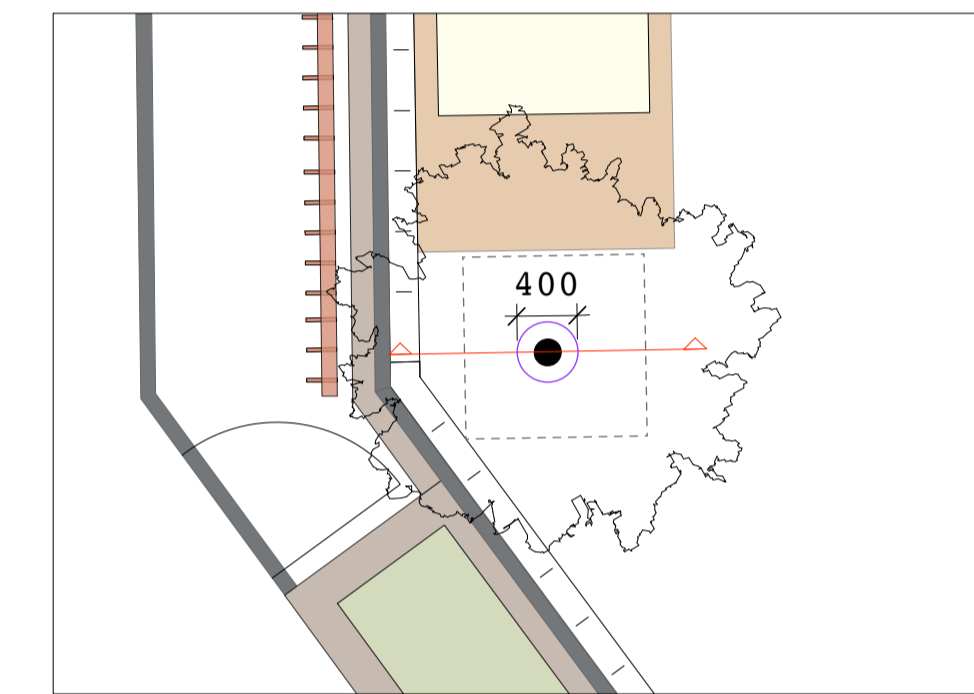
Pea gravel drainage layer
- 5-7mm, domed to middle, max. 250mm thick

Underground tree guying system; strapped large anchor system + ground anchors:
- Arborguy SASLP

Wet pour rubber surface; refer to current revision of KL037.F.SD.102

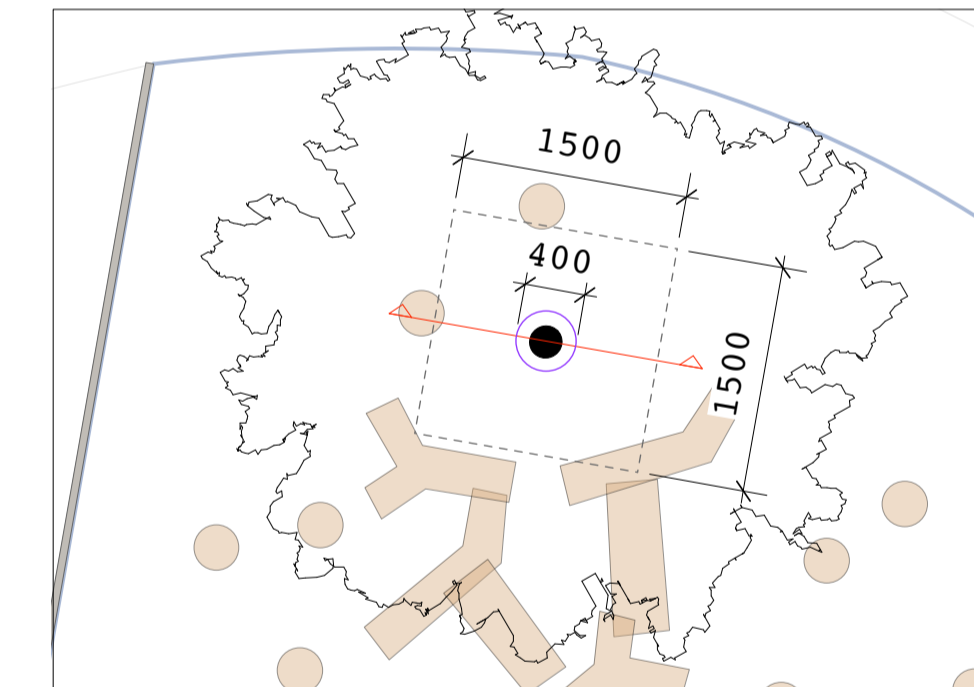
Tree pit depth to be min. 250mm greater than rootball

*1200 - 1500, as dimensioned



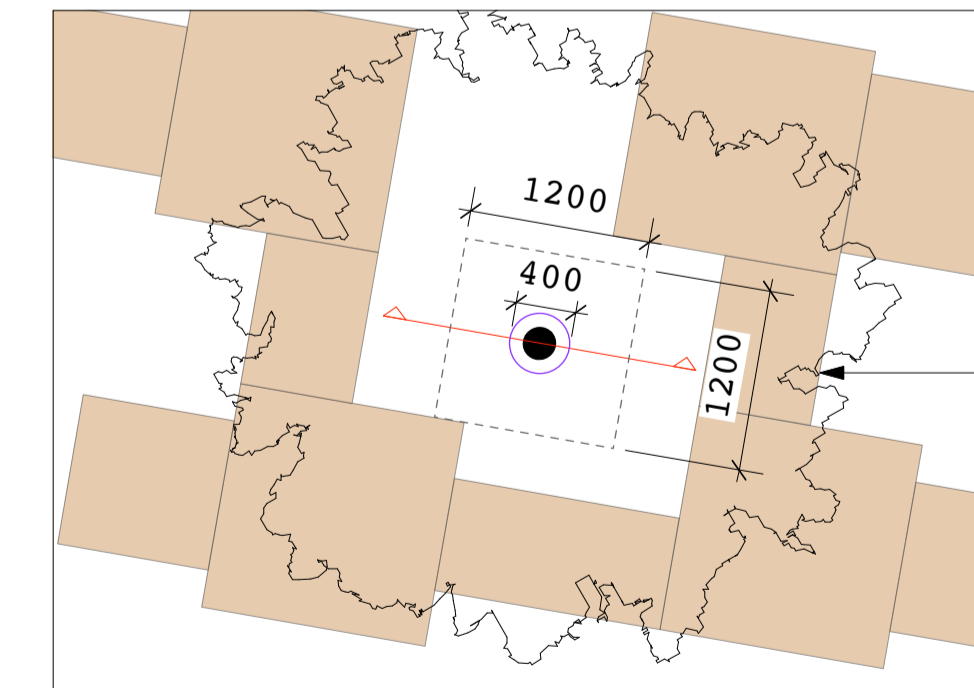
Tree pit 1, 1:50

--- Tree pit extent, as dimensioned
--- 3mm aluminium collar, as dimensioned



Tree pit 2, 1:50

--- Tree pit extent, as dimensioned
--- 3mm aluminium collar, as dimensioned



Tree pit 3, 1:50

--- Tree pit extent, as dimensioned
--- 3mm aluminium collar, as dimensioned

Tree platform above, refer to current revision of KL037.F.SD.508

Notes:

- Soil analysis to be submitted for topsoil and subsoil, for approval
- Refer to current revision of Tree Planting Plan (KL037.F.02.TP) and Planting Schedule (KL037.F.Doc02.PS2) for tree species and sizes.

Products:

- Seanure Seaweed Soil Builder supplied by *collier-turf-care.co.uk* @ 1500g/m3
- Broadleaf P4 agricultural polymer supplied by *agripol.co.uk* @ 1kg/m3
- From: *greenblue.com/gb*
- Tree irrigation system; RootRain Metro 35mm x 2.5m plastic with chain
- Tree guying system; strapped large anchor system: Arborguy SASLP
- all of the above, or equal approved.

JCLA

3A Iliffe Yard
LONDON SE17 3QA
Telephone
+44 (0)207 703 3270

www.jcla.co.uk

Notes

- Do not scale from drawings.
- To be read in conjunction with all relevant Architects', Services and Structural Engineers' drawings.
- All existing site, tree and building information has been compiled from different sources.
- All dimensions to be checked on site.

Revisions

**PLANNING CONDITION
ISSUE**

Project Kingsgate Liddell

Project No. KL037

Client Camden council

Date 18.01.2017

Scale 1:10 @ A1 / 1:20 @ A3

Drawing Name. Tree pit in wet pour rubber surface (southern edge playground)
Dwg No. KL037.F.SD.607

Revision