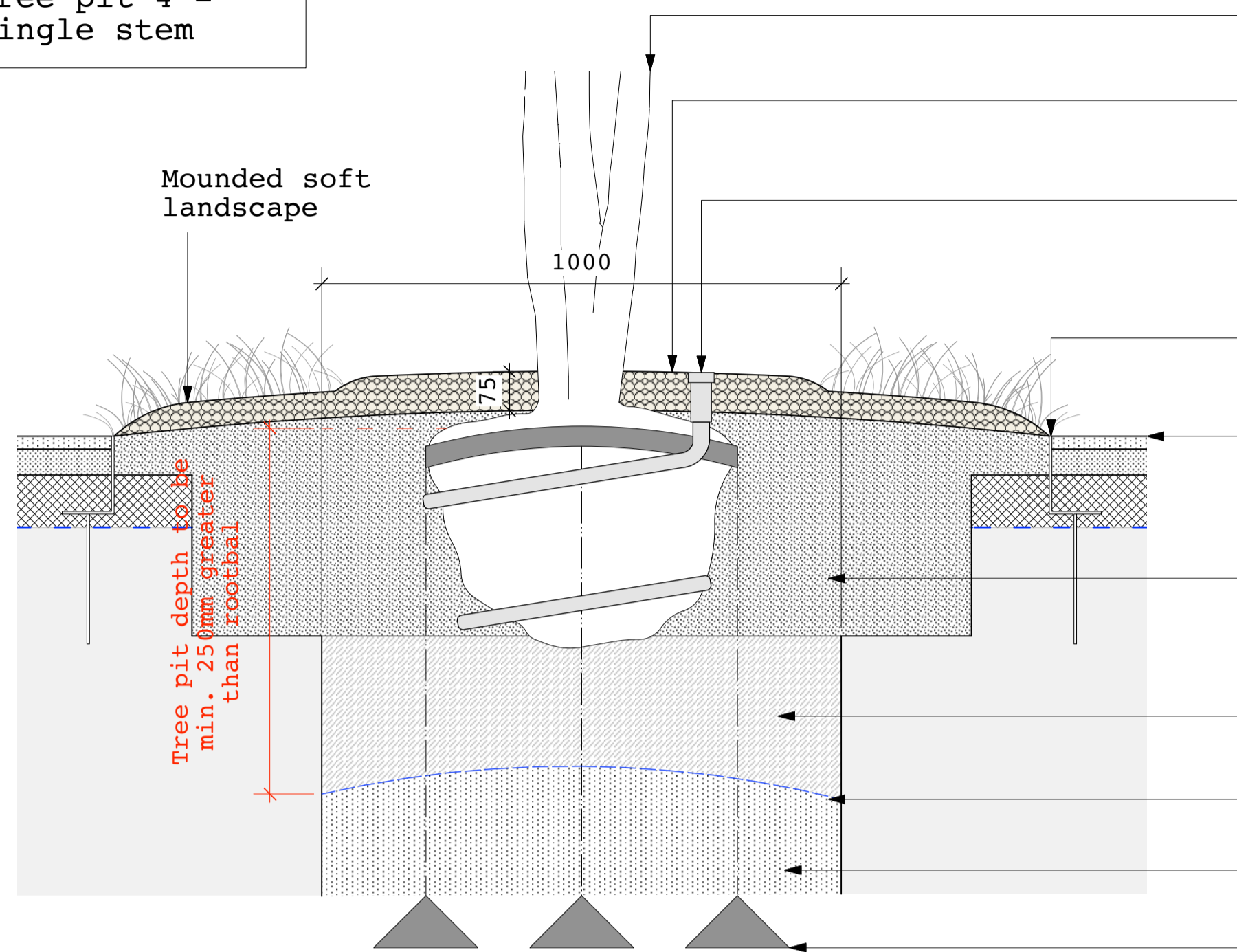


**TREE PIT IN SOFT LANDSCAPE: MAIN PLAYGROUND - SHEET B
(MOUNDS)**

604B.1
Tree pit 4 -
single stem



Note: Tree to be planted at same level and orientation as in nursery

75mm approved bark mulch, as specified

Tree irrigation/ventilation system:
Flexible black perforated pipe, wrapped around rootball;
- RootRain Metro 35mm x 2.5m plastic with chain

Aluminium edge;
refer to current revision of **KL037.F.SD.303**

Pedestrian asphalt;
refer to current revision of **KL037.F.SD.101B**

Backfill: Top 400mm imported topsoil:
- Supplemented by 10% approved compost to BSI PAS 100
- Soil conditioner: seanure soil improver @ 1500g/m3 and Broadleaf P4 agricultural polymer crystals @ 1kg/m3, as specified.

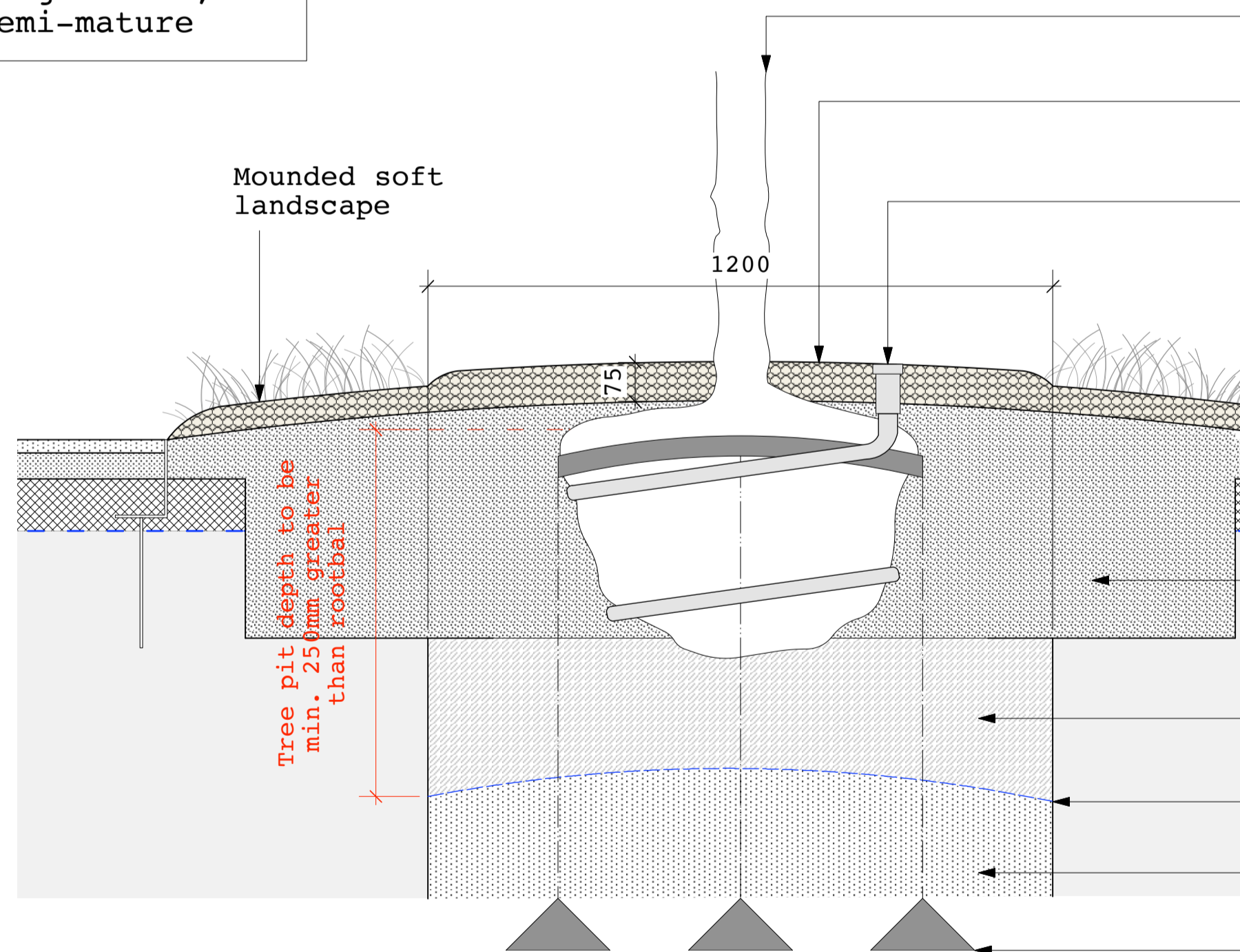
Backfill: Bottom of tree pit to be sandy loam topsoil, as specified.

Geotextile:
- Terram 1000

Pea gravel drainage layer
- 5-7mm, domed to middle, max. 250mm thick

Underground tree guying system; strapped medium anchor system + ground anchors:
- Arborguy SASMP

604B.2
Tree pit 5 -
single stem,
semi-mature



Note: Tree to be planted at same level and orientation as in nursery

75mm approved bark mulch, as specified

Tree irrigation/ventilation system:
Flexible black perforated pipe, wrapped around rootball;
- RootRain Metro 35mm x 2.5m plastic with chain

Aluminium edge;
refer to current revision of **KL037.F.SD.303**

Pedestrian asphalt;
refer to current revision of **KL037.F.SD.101B**

Backfill: Top 400mm imported topsoil:
- Supplemented by 10% approved compost to BSI PAS 100
- Soil conditioner: seanure soil improver @ 1500g/m3 and Broadleaf P4 agricultural polymer crystals @ 1kg/m3, as specified.

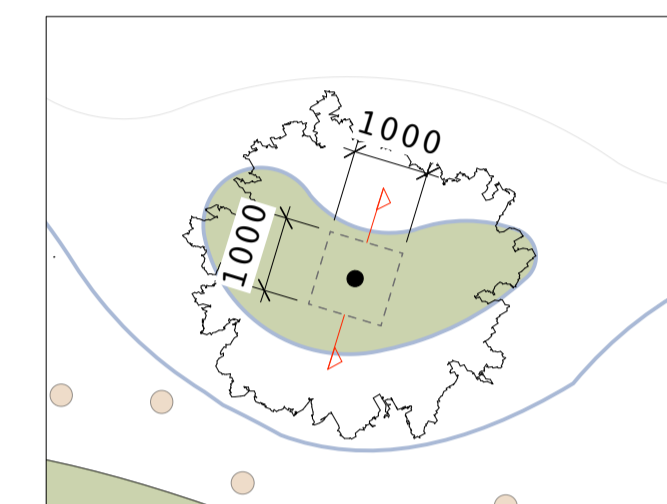
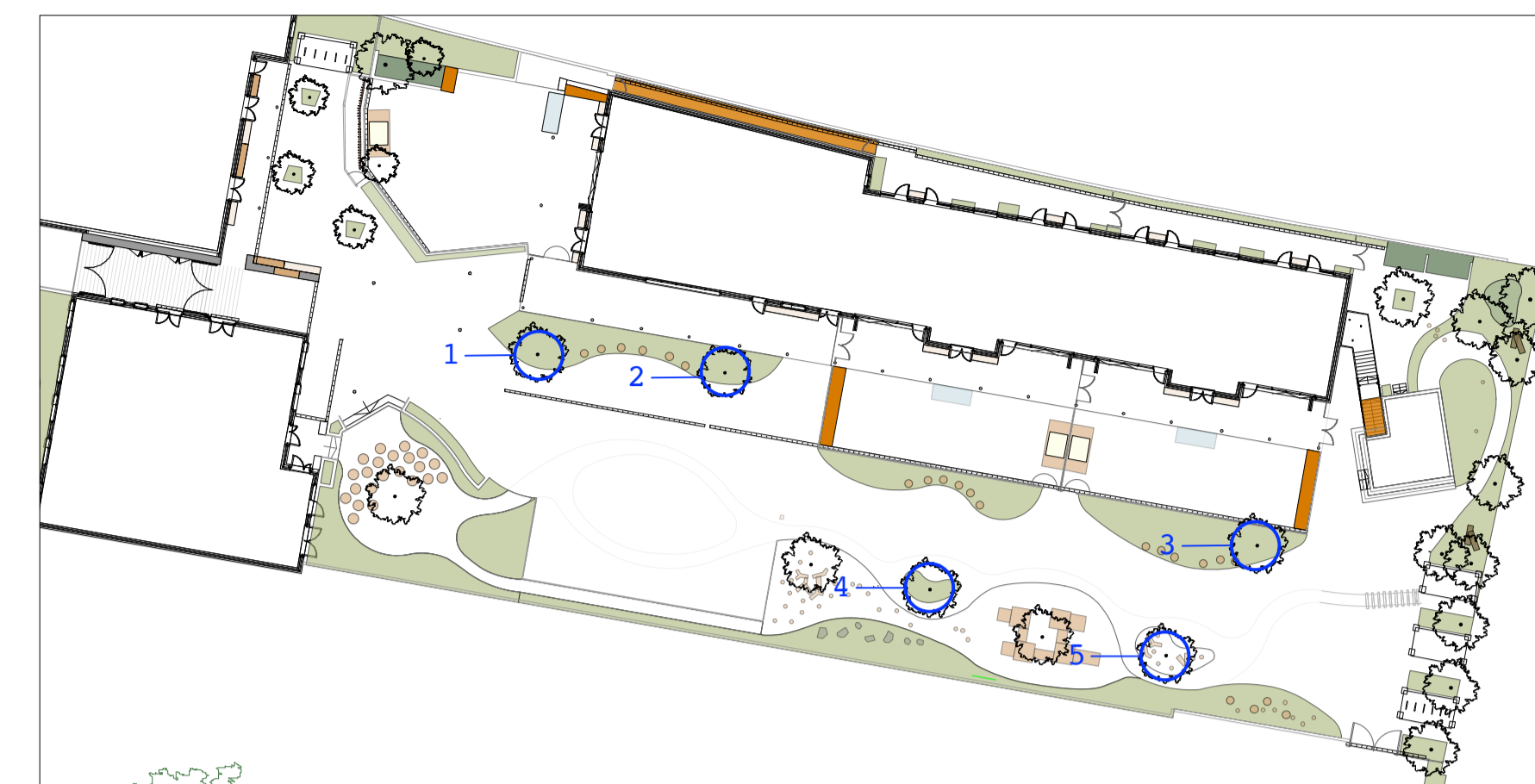
Backfill: Bottom of tree pit to be sandy loam topsoil, as specified.

Geotextile:
- Terram 1000

Pea gravel drainage layer
- 5-7mm, domed to middle, max. 250mm thick

Underground tree guying system; strapped large anchor system + ground anchors:
- Arborguy SASLP

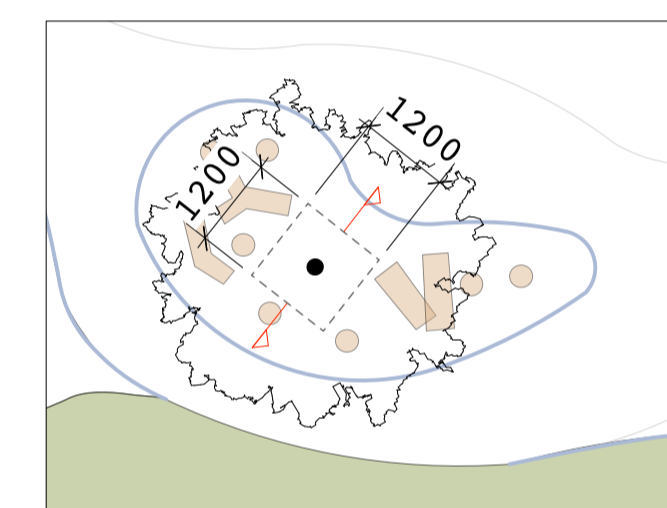
LOCATION PLAN 1:500



Tree pit 4, 1:100

----- Tree pit extent, as dimensioned

— Aluminium edge;
refer to current revision of **KL037.F.SD.303**



Tree pit 5, 1:100

----- Tree pit extent, as dimensioned

— Aluminium edge;
refer to current revision of **KL037.F.SD.303**

Notes:

- Soil analysis to be submitted for topsoil and subsoil, for approval
- Refer to current revision of Tree Planting Plan (**KL037.F.02.TP**) and Planting Schedule (**KL037.F.Doc02.PS2**) for tree species and sizes.

Products:

- Seanure Seaweed Soil Builder supplied by *collier-turf-care.co.uk* @ 1500g/m3
- Broadleaf P4 agricultural polymer supplied by *agripol.co.uk* @ 1kg/m3
- From: *greenblue.com/gb*
- Tree irrigation system; RootRain Metro 35mm x 2.5m plastic with chain
- Tree guying system; strapped medium anchor system: Arborguy SASMP, or strapped large anchor system: Arborguy SASLP
- all of the above, or equal approved.**

JCLA

3A Iliffe Yard
LONDON SE17 3QA
Telephone
+44 (0)207 703 3270

www.jcla.co.uk

Notes

- Do not scale from drawings.
- To be read in conjunction with all relevant Architects', Services and Structural Engineers' drawings.
- All existing site, tree and building information has been compiled from different sources.
- All dimensions to be checked on site.

Revisions

**PLANNING CONDITION
ISSUE**

Project Kingsgate Liddell

Project No. **KL037**

Client Camden council

Date 18.01.2017

Scale 1:10 @ A1 / 1:20 @ A3

Drawing Name. Tree pit in soft main playground (mounds) - SHEET B

Dwg No. KL037.F.SD.604B

Revision