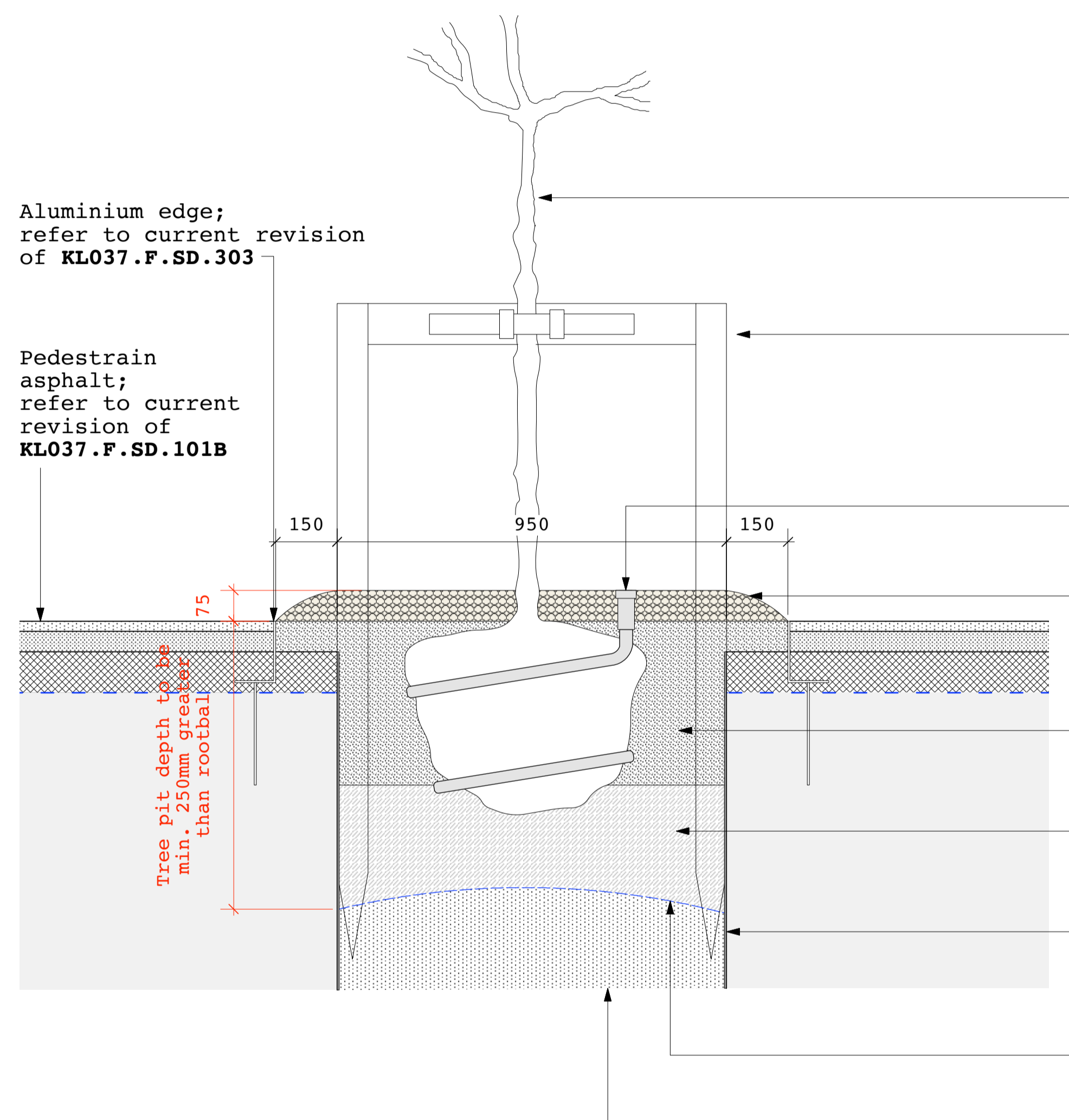
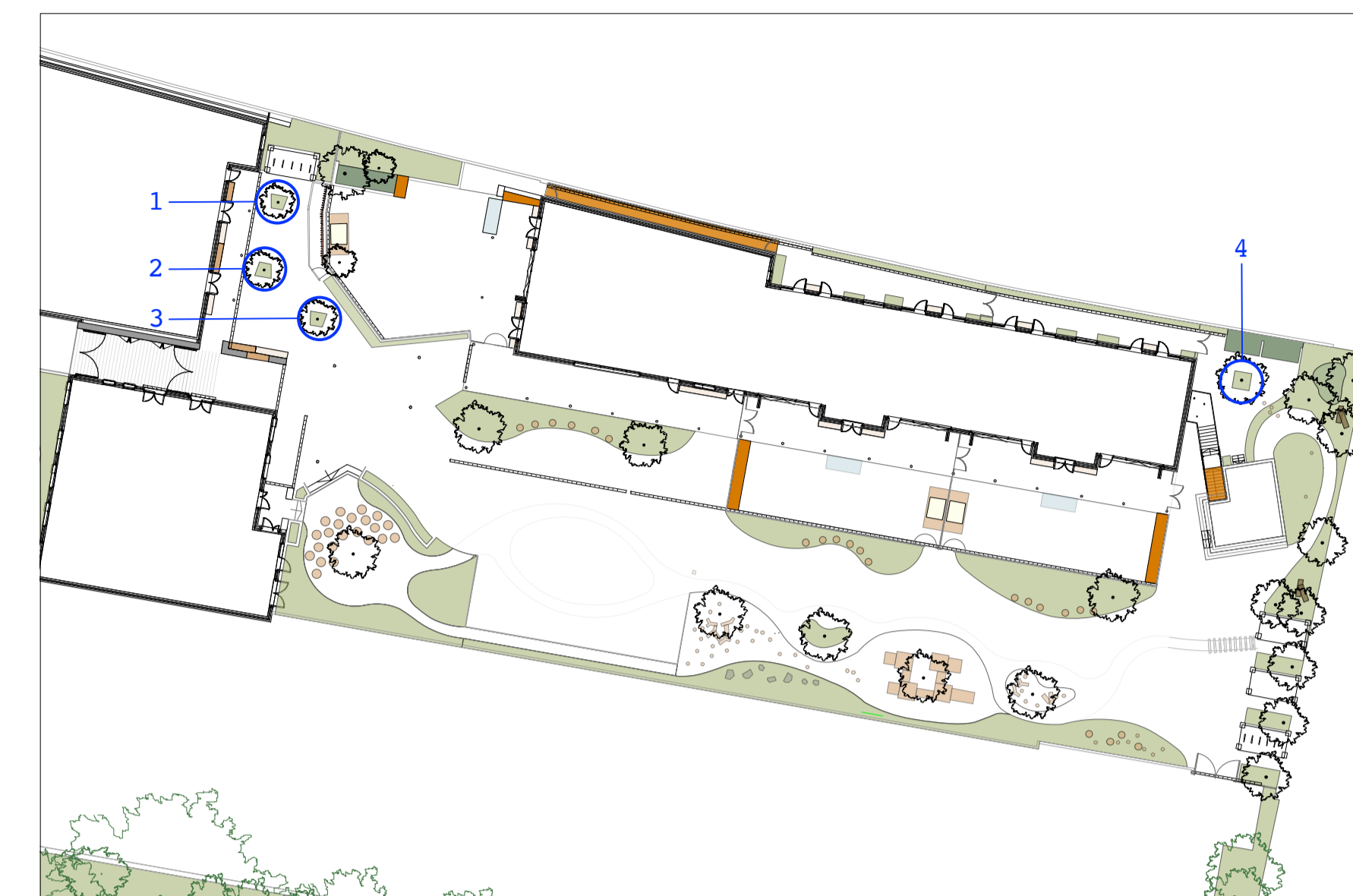


**TREE PIT IN GROUND LEVEL PLANTER
(ENTRANCE COURTYARD/SCIENCE GARDEN)**

LOCATION PLAN 1:500



Note: Tree to be planted at same level and orientation as in nursery

Tree staking:
 - 75mm diameter round posts min. 1700mm length, driven min. 300mm through bottom of tree pits
 - Cross-member 100x25mm softwood board approx. 1000mm length, fixed using galvanised nails
 - Tree secured using expanding rubber belt and flatpack pad, as specified

Tree irrigation/ventilation system:
 Flexible black perforated pipe, wrapped around rootball;
 - RootRain Metro 35mm x 2.5m plastic with chain

75mm approved bark mulch, as specified

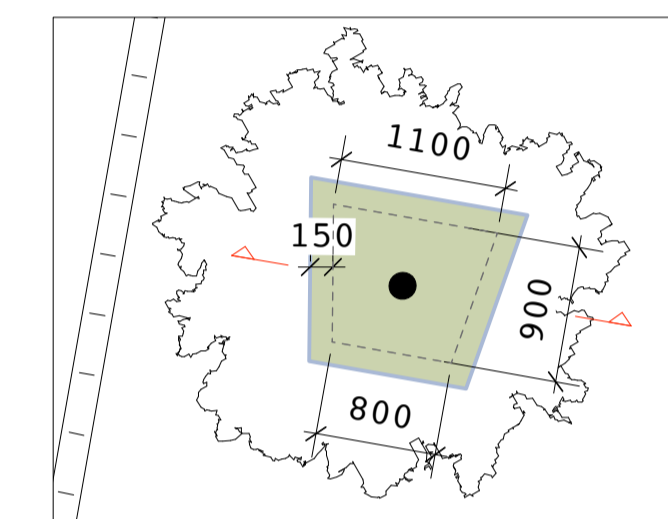
Backfill: Top 400mm imported topsoil:
 - Supplemented by 10% approved compost to BSI PAS 100
 - Soil conditioner: seanure soil improver @ 1500g/m³ and Broadleaf P4 agricultural polymer crystals @ 1kg/m³, as specified.

Backfill: Bottom of tree pit to be sandy loam topsoil, as specified.

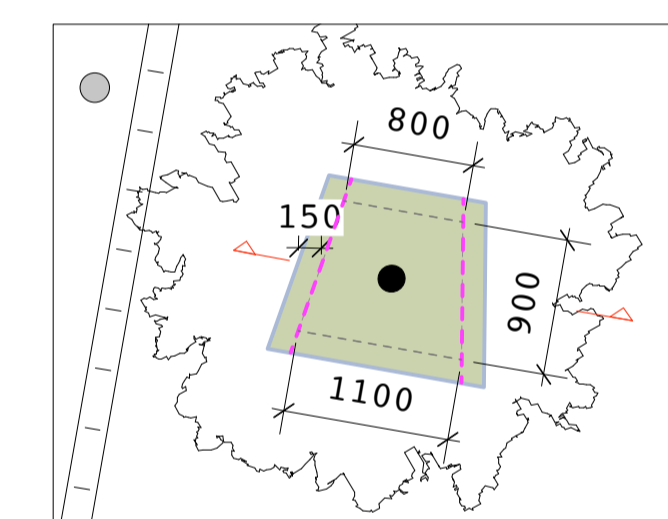
Root barrier, if required adjacent to service run (see key plan opposite):
 - Flexible ribbed root barrier system positioned where required - depth dependant on adjacent service runs, check on site.
 - ReRoot 1000

Geotextile:
 - Terram 1000

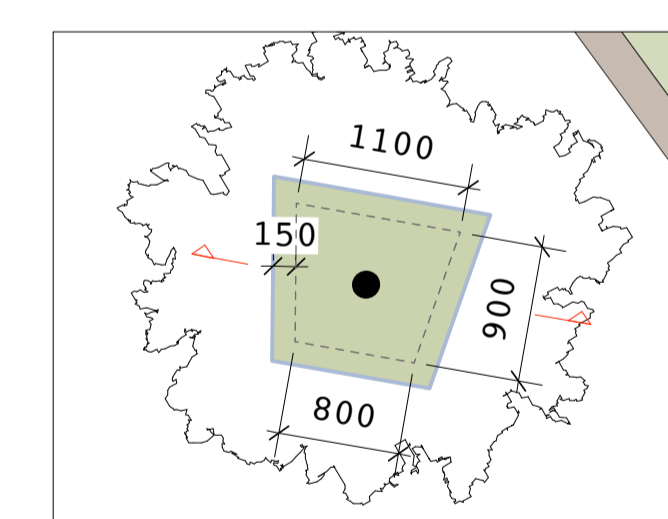
Pea gravel drainage layer
 - 5-7mm, domed to middle, max. 250mm thick



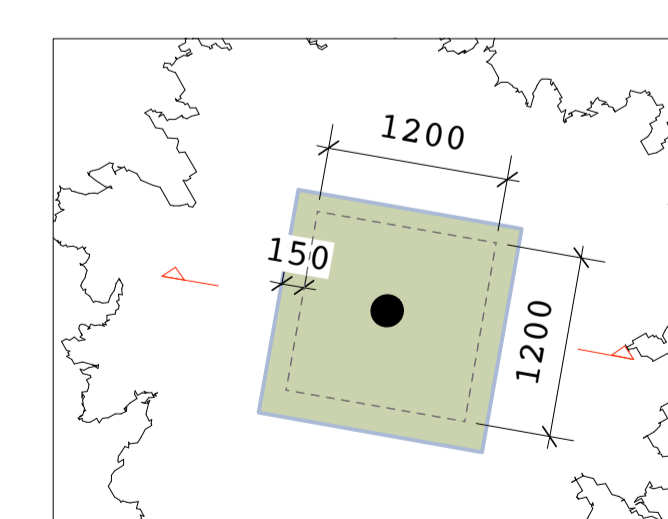
Tree pit 1, 1:50
 - - - - - Tree pit extent, as dimensioned
 - - - - - Aluminium edge; refer to current revision of KL037.F.SD.303



Tree pit 2, 1:50
 - - - - - Tree pit extent, as dimensioned
 - - - - - Aluminium edge; refer to current revision of KL037.F.SD.303
 - - - - - Root barrier; ReRoot 1000



Tree pit 3, 1:50
 - - - - - Tree pit extent, as dimensioned
 - - - - - Aluminium edge; refer to current revision of KL037.F.SD.303



Tree pit 4, 1:50
 - - - - - Tree pit extent, as dimensioned
 - - - - - Aluminium edge; refer to current revision of KL037.F.SD.303

Notes:
 - Soil analysis to be submitted for topsoil and subsoil, for approval
 - Refer to current revision of Tree Planting Plan (KL037.F.02.TP) and Planting Schedule (KL037.F.Doc02.PS2) for tree species and sizes.
 - Refer also to current revision of Detail Landscape Plans 1,2,3 (KL037.F.01.DLP1/2/3) for surface/edging arrangement of angular tree surrounds

Products:
 Seanure Seaweed Soil Builder supplied by collier-turf-care.co.uk @ 1500g/m³
 Broadleaf P4 agricultural polymer supplied by agripol.co.uk @ 1kg/m³
 From: greenblue.com/gb
 - Tree irrigation system; RootRain Metro 35mm x 2.5m plastic with chain
 - Root barrier; ReRoot 1000 as required
all of the above, or equal approved.

JCLA
 3A Iliffe Yard
 LONDON SE17 3QA
 Telephone
 +44 (0)207 703 3270
 www.jcla.co.uk

Notes
 - Do not scale from drawings.
 - To be read in conjunction with all relevant Architects', Services and Structural Engineers' drawings.
 - All existing site, tree and building information has been compiled from different sources.
 - All dimensions to be checked on site.
Revisions

PLANNING CONDITION ISSUE

Project Kingsgate Liddell
Project No. KL037
Client Camden council
Date 18.01.2017
Scale 1:10 @ A1 / 1:20 @ A3
Drawing Name. Tree pit in ground level cover (entrance courtyard/science garden)
Dwg No. KL037.F.SD.602