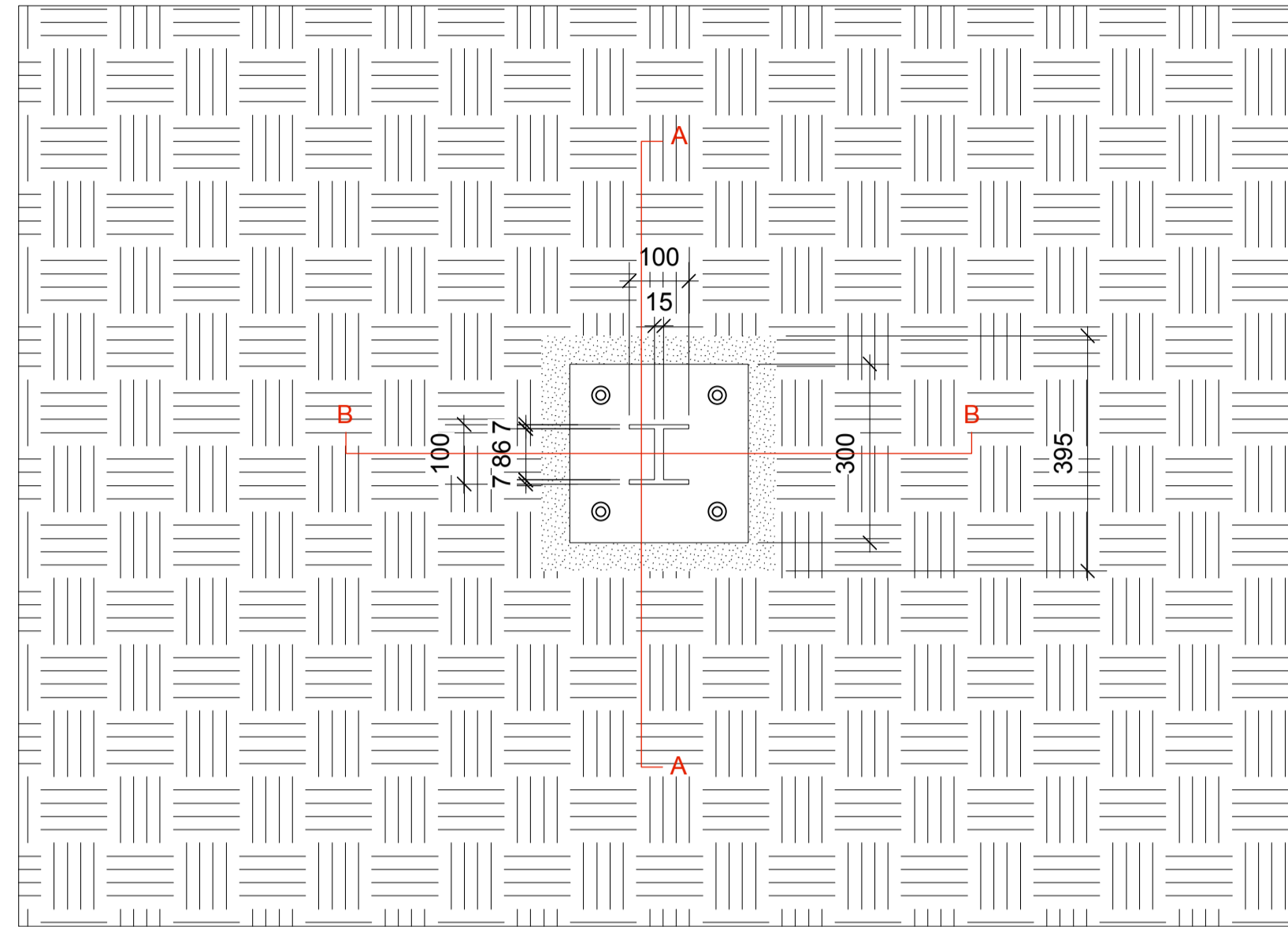
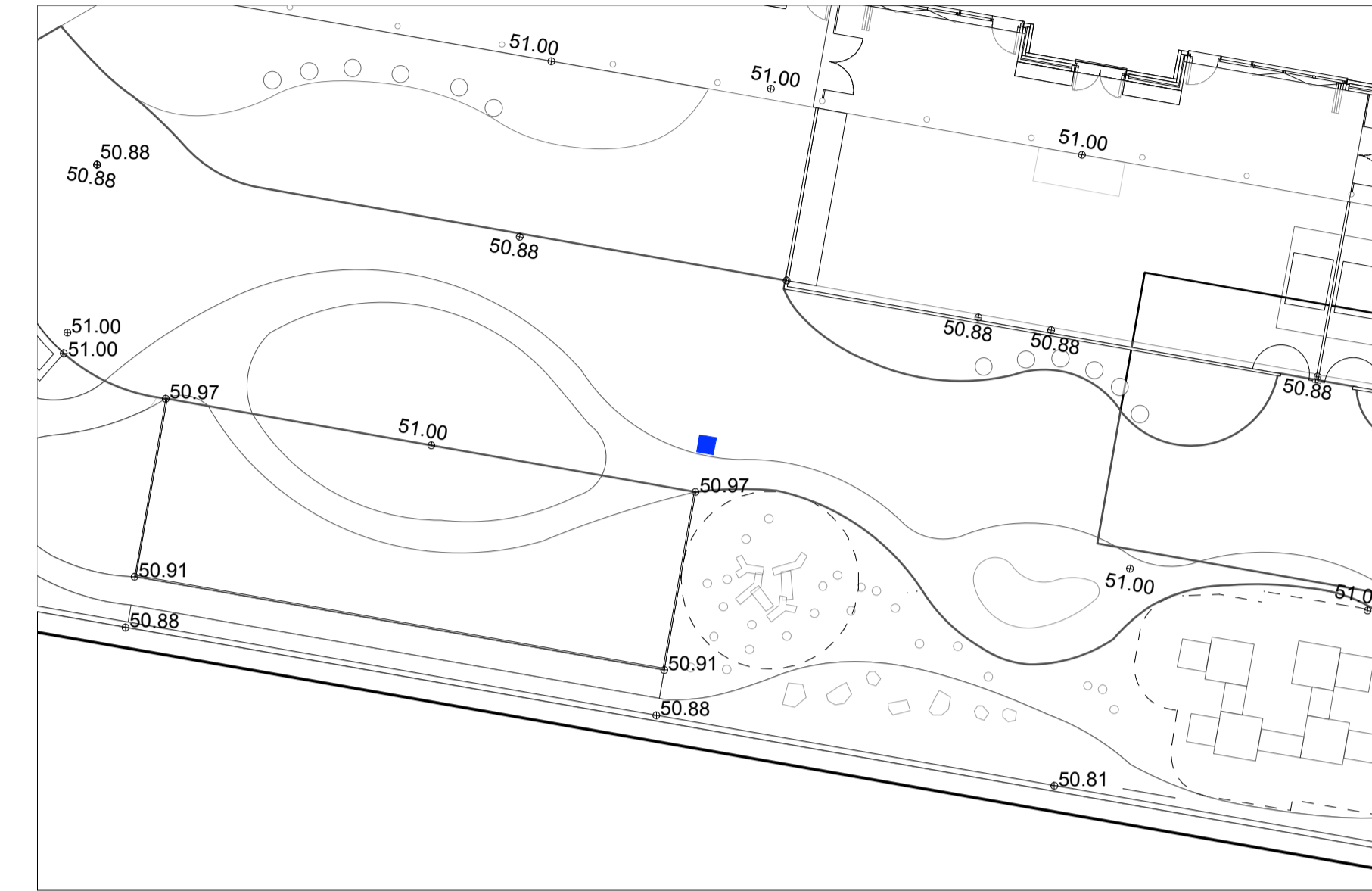


BESPOKE METALWORK SEMAPHORE RAILWAY SIGNAL

PLAN 1:10

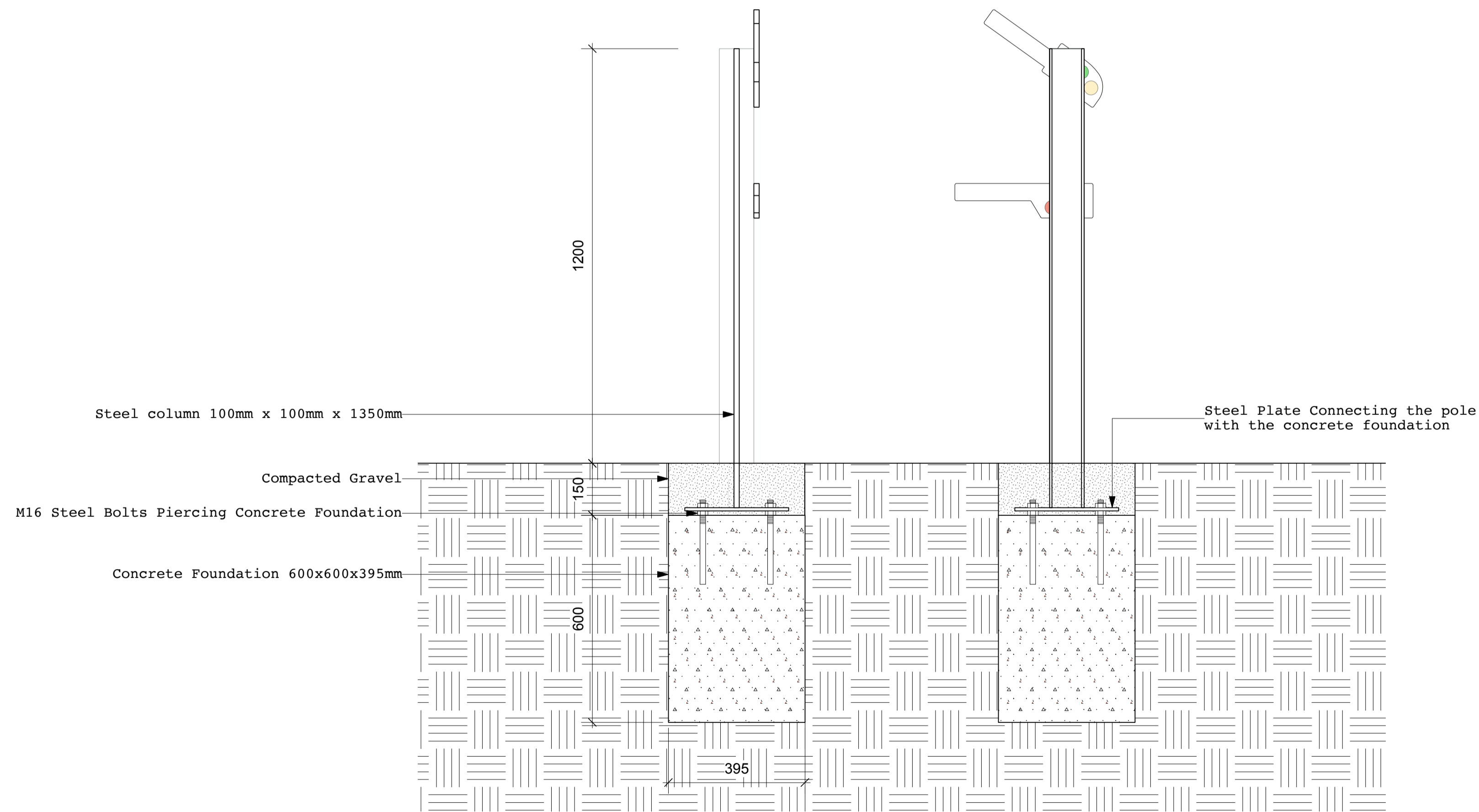


LOCATION PLAN 1:200

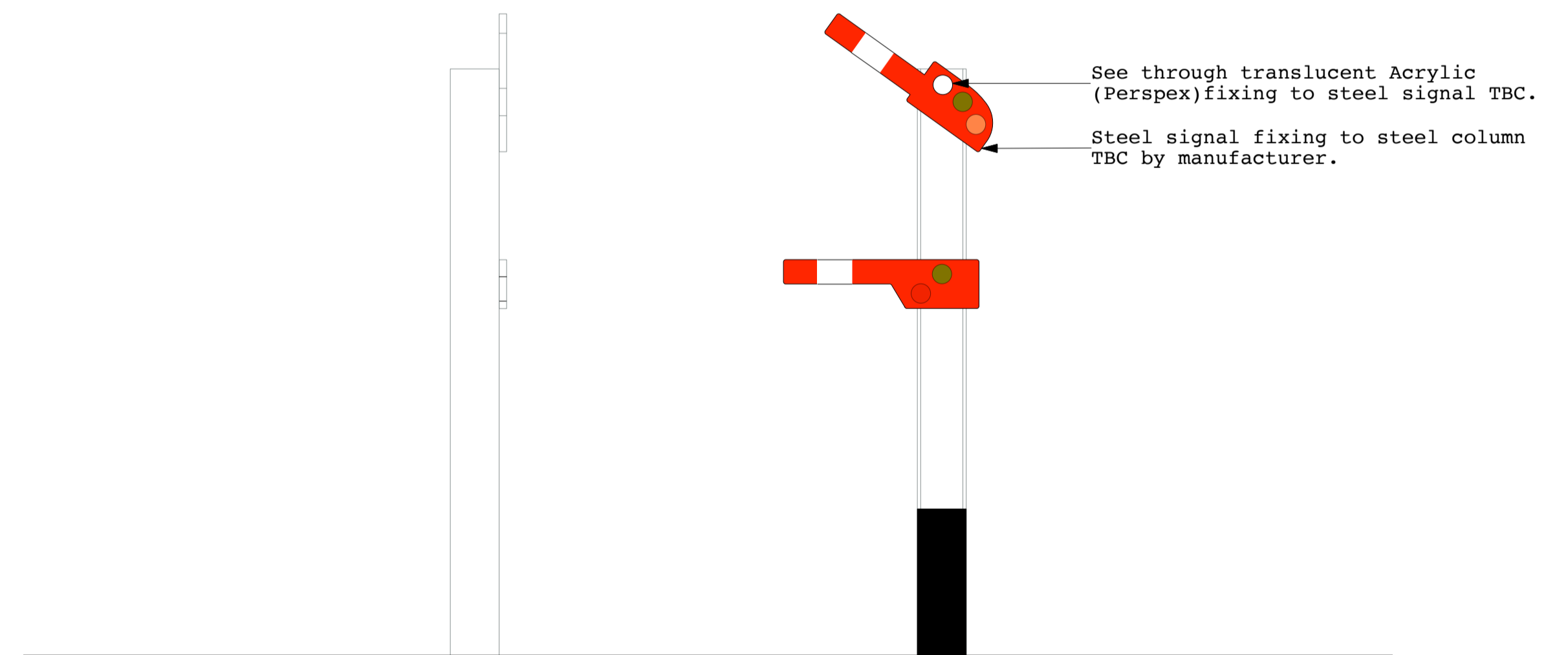


SECTION 1:10 (B-B)

SECTION 1:10 (A-A)



ELEVATIONS 1:10



Steel elements to be galvanised and powder coated (black/white/red as detailed)

Bespoke metal element fabricated by metalworkslondon.co.uk

Telephone number : 0207 733 7788

E-mail: admin@metalworkslondon.com

See through translucent Acrylic (Perspex) in red, green and orange 12mm width distributed by "The Plastic People" or equal quality approved.
Website : theplasticpeople.co.uk
Email : artwork@theplasticpeople.co.uk

JCLA

3A Iliffe Yard
LONDON SE17 3QA
Telephone
+44 (0)207 703 3270

www.jcla.co.uk

Notes

- Do not scale from drawings.
- To be read in conjunction with all relevant Architects', Services and Structural Engineers' drawings.
- All existing site, tree and building information has been compiled from different sources.
- All dimensions to be checked on site.

Revisions

**PLANNING
CONDITION ISSUE**

Project Kingsgate Liddell

Project No. KL037

Client Camden council

Date 18.01.2017

Scale 1:10 @ A1

Drawing Name. Semaphore railway signal

Dwg No. KL037.F.SD.506

Revision