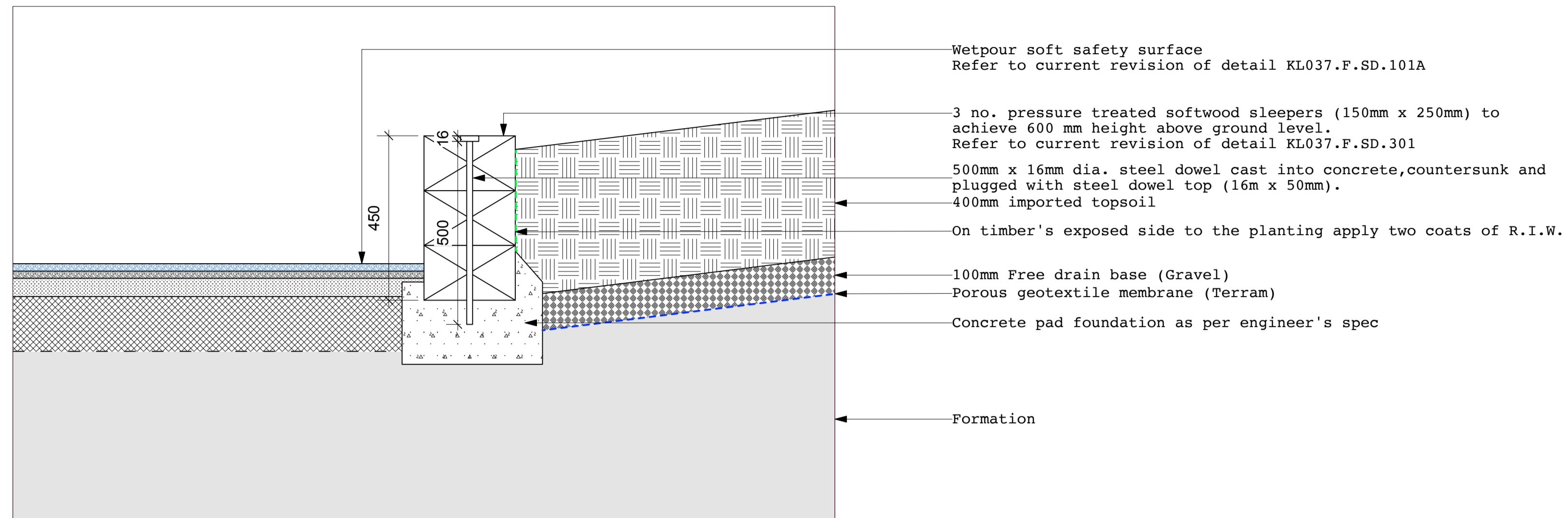
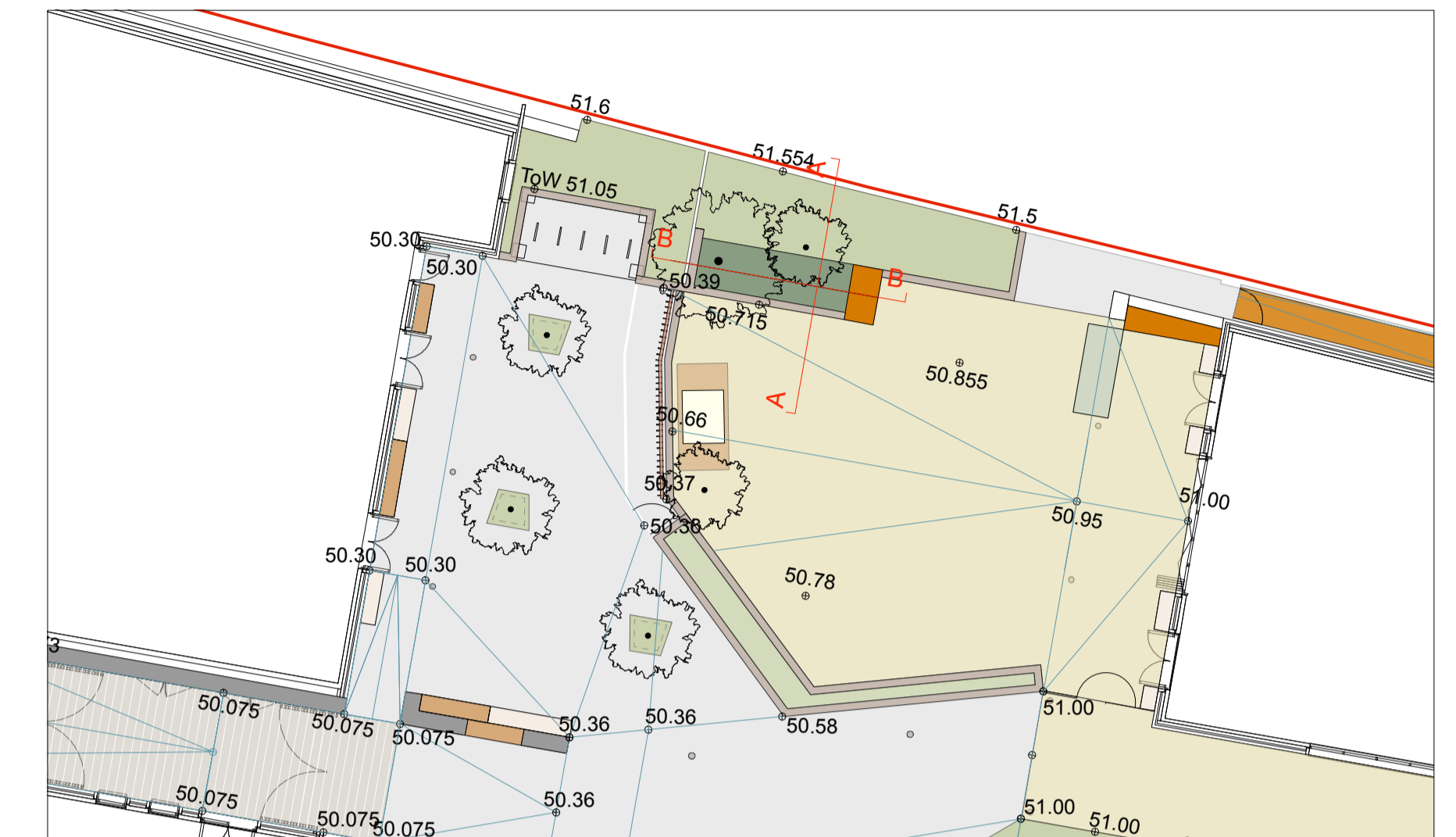


DIG AND GROW PLANTER
(NURSERY)

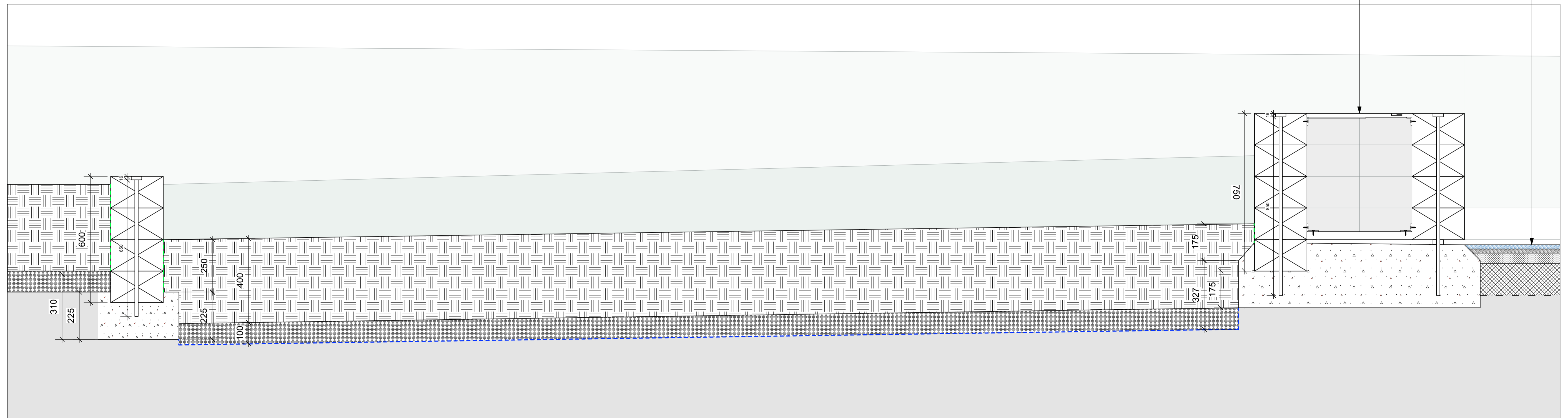
SECTION A-A 1:10



LOCATION PLAN 1:100



SECTION B-B 1:10



Wetpour soft safety surface
Refer to current revision of detail KL037.F.SD.102A

Pressure treated softwood sleepers store (150mm x 250mm)
following sleepers from dig and grow planter.
Refer to current revision of detail KL037.F.SD.501

-Refer to engineer's details for build up / specification.
-For general arrangements refer to current revision of K1037.F.08.HSL1.

JCLA

3A Iliffe Yard
LONDON SE17 3QA
Telephone
+44 (0)207 703 3270

www.jcla.co.uk

Notes
- Do not scale from drawings.
- To be read in conjunction with all relevant Architects', Services and Structural Engineers' drawings.
- All existing site, tree and building information has been compiled from different sources.
- All dimensions to be checked on site.

Revisions

**PLANNING
CONDITION ISSUE**

Project Kingsgate Liddell
Project No. **KL037**
Client Camden council

Date 18.01.2017
Scale 1:20 @ A1

Drawing Name. Nursery dig and grow planter
Dwg No. KL037.F.SD.504

Revision *