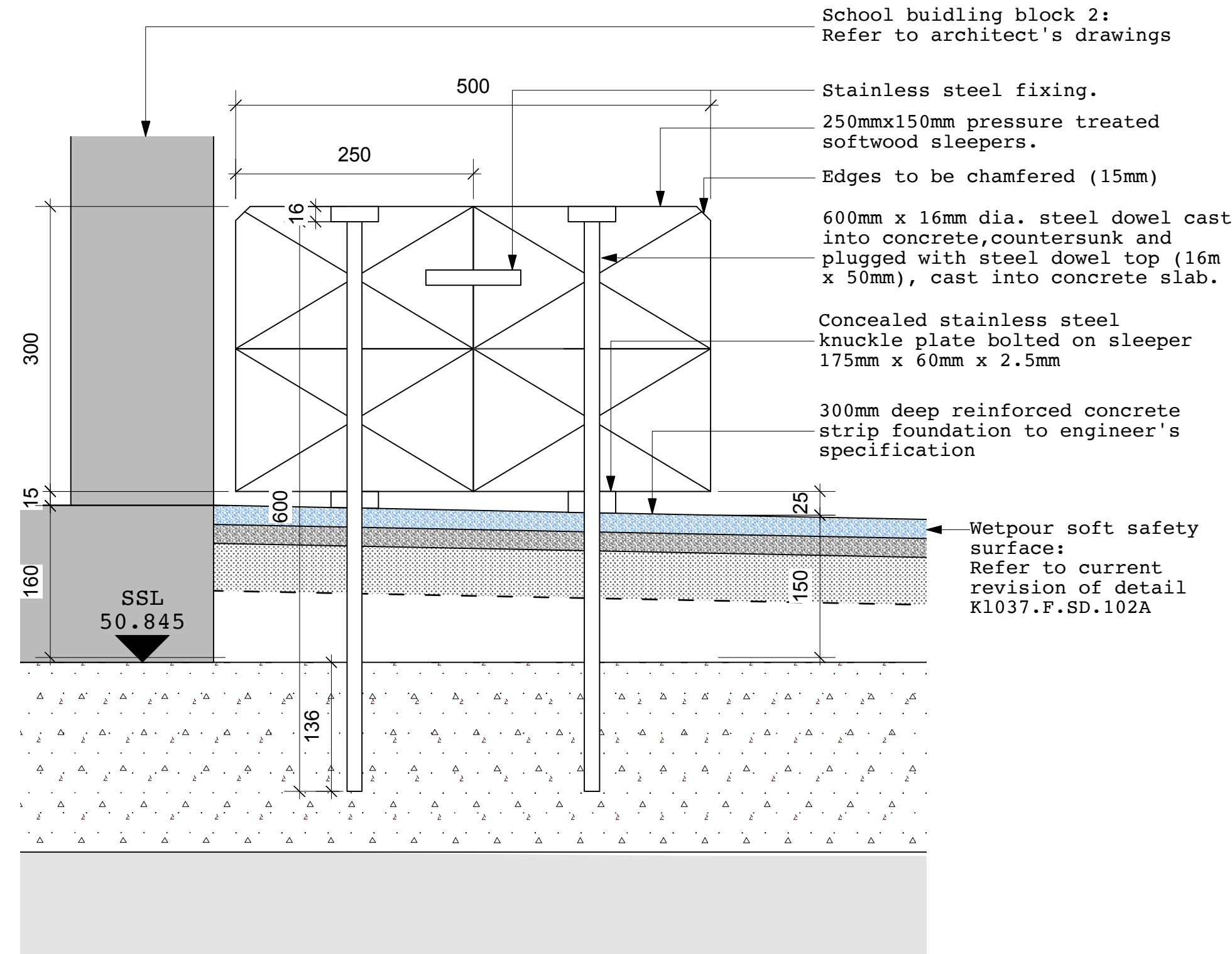
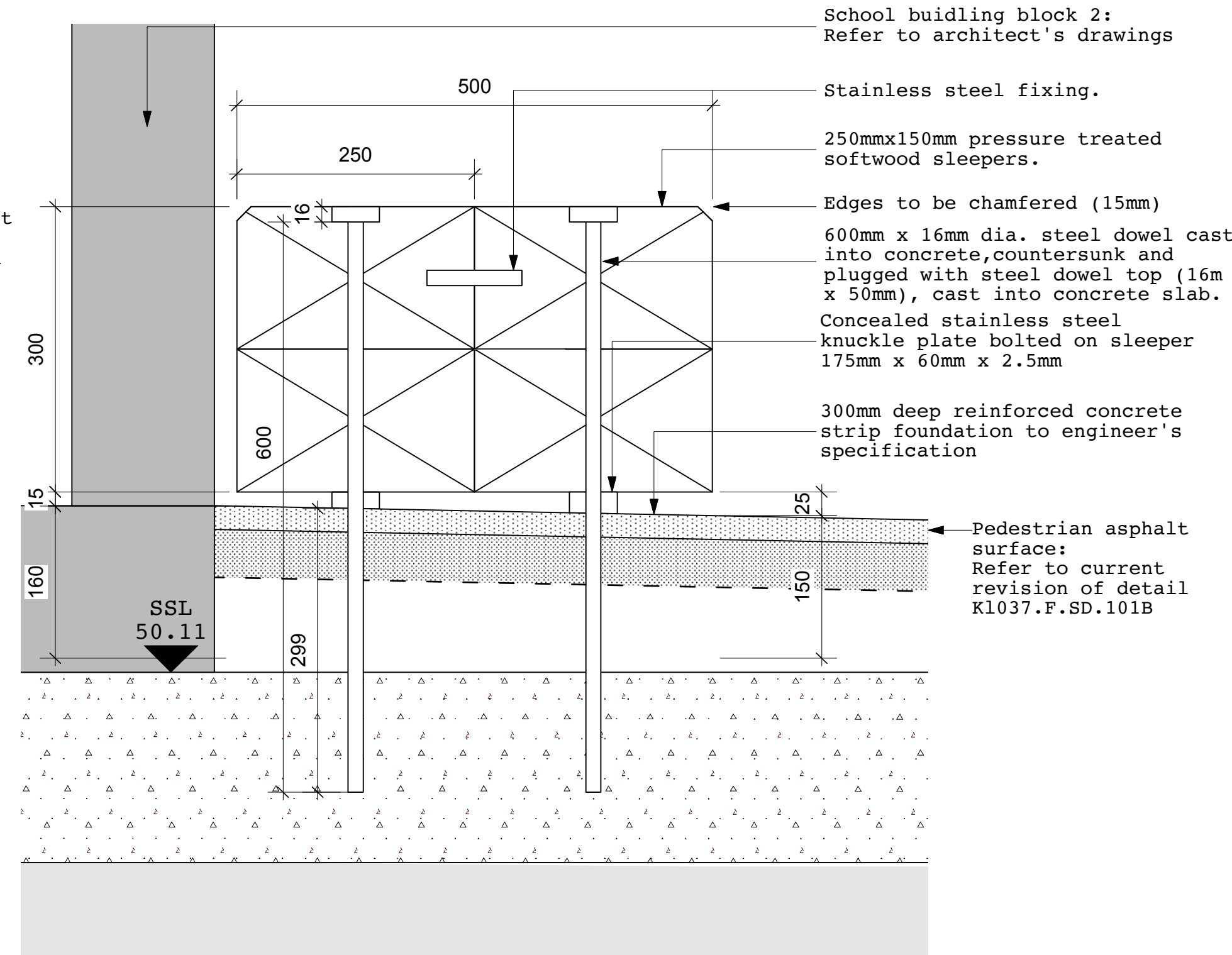


TIMBER SLEEPER BENCH

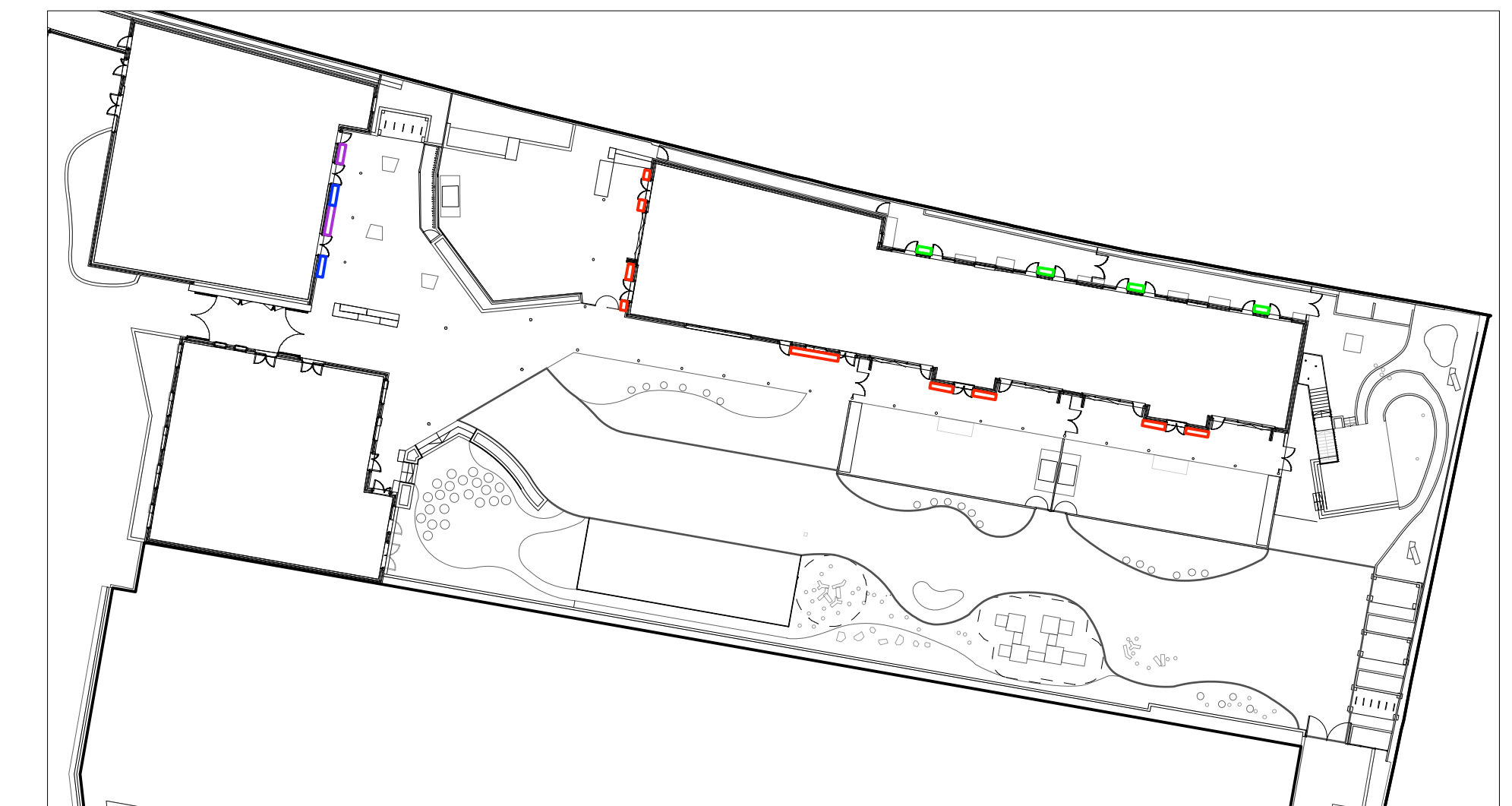
Type 1: Bench (300mm ht)
Fixed on structural slab of building block 2



Type 2: Bench (300mm ht)
Fixed on structural slab of building block 1

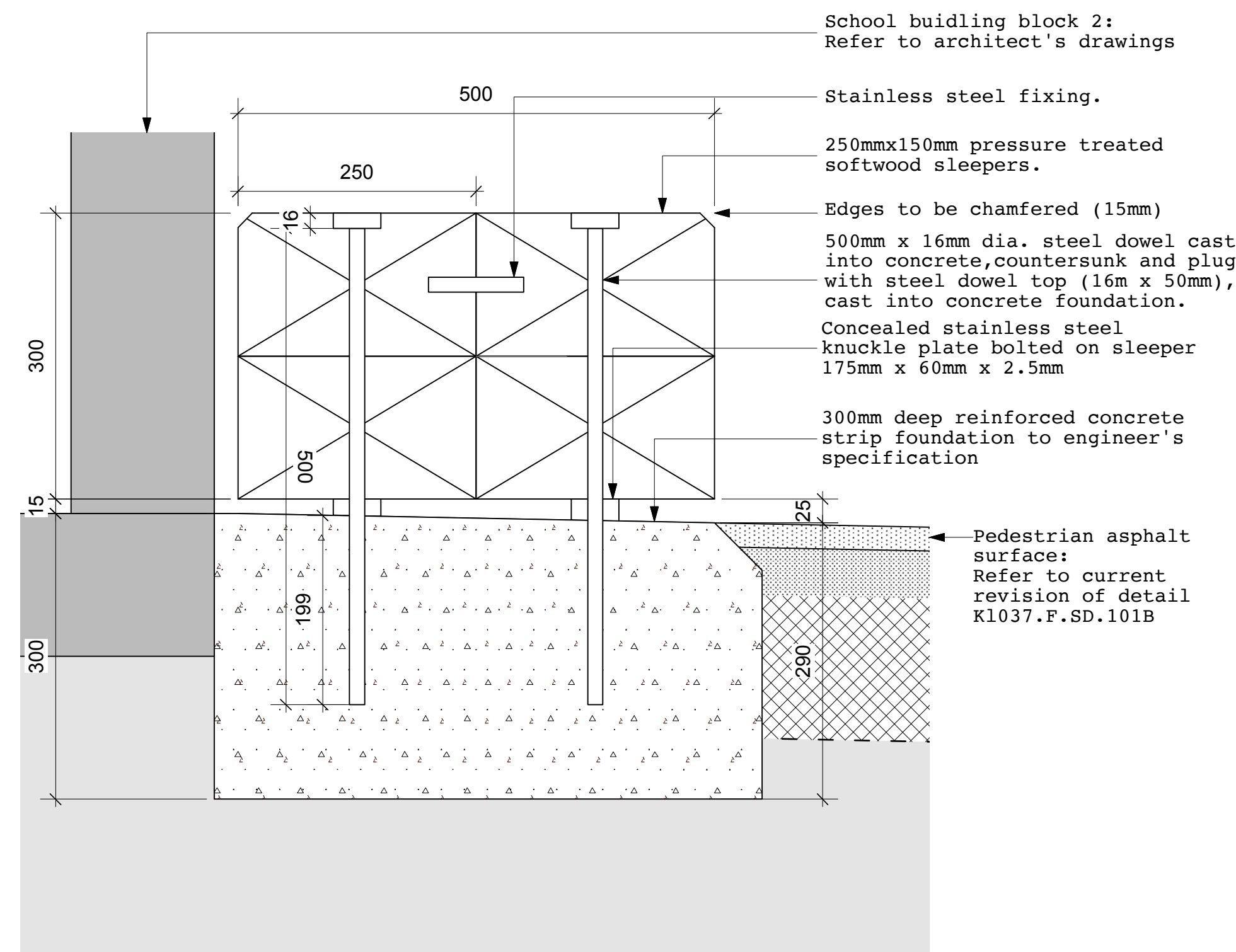


LOCATION PLAN 1:500

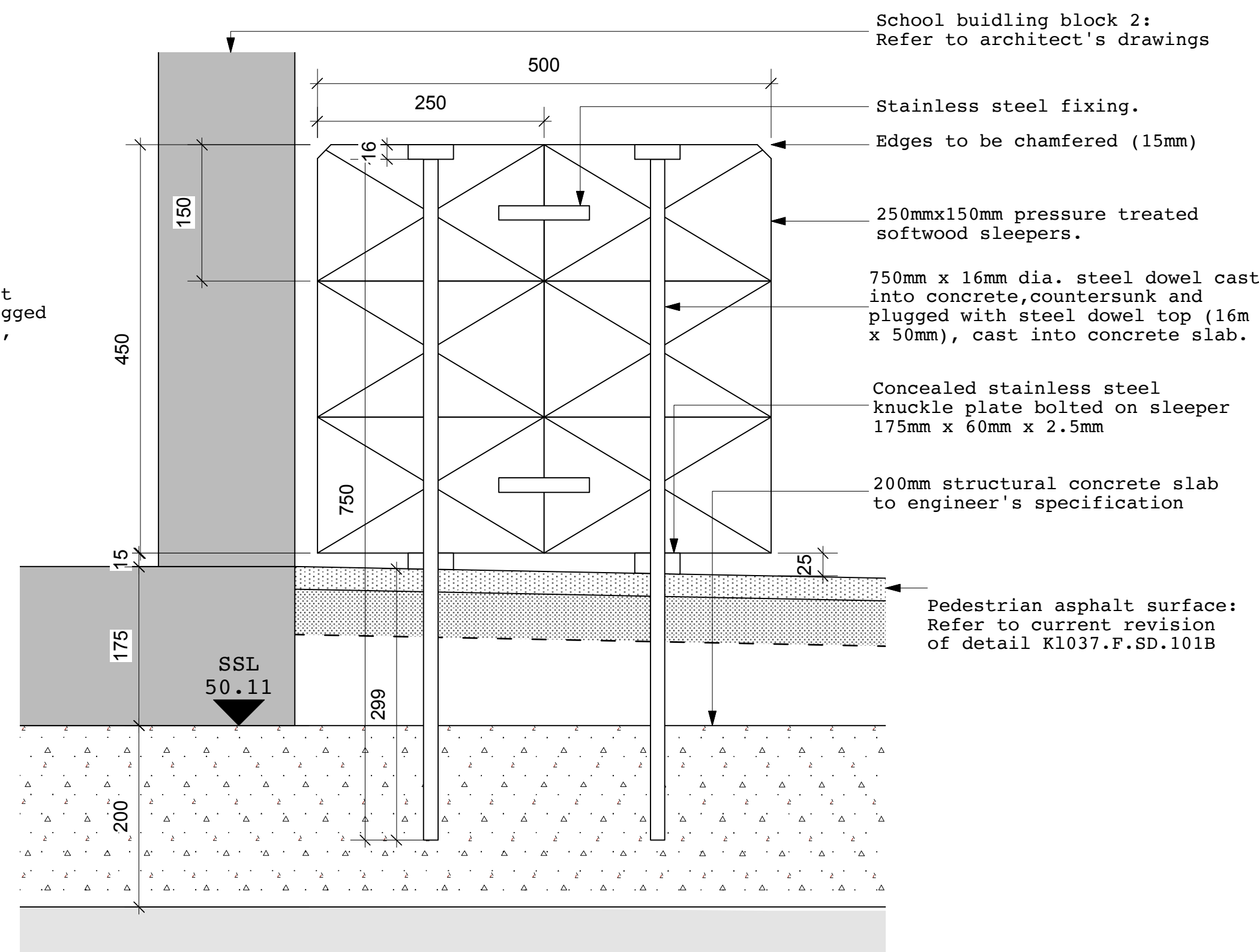


- Bench type 1
- Bench type 2
- Bench type 3
- Bench type 4

Type 3: Bench (300mm ht)
Fixed on concrete strip foundation



Type 4: Bench (450mm ht)
Fixed on structural slab of building block 1



-Refer to engineer's details for build up / specification.
-For general arrangements refer to current revision of K1037.F.08.HSL1.

JCLA

3A Iliffe Yard
LONDON SE17 3QA
Telephone
+44 (0)207 703 3270

www.jcla.co.uk

Notes
- Do not scale from drawings.
- To be read in conjunction with all relevant Architects', Services and Structural Engineers' drawings.
- All existing site, tree and building information has been compiled from different sources.
- All dimensions to be checked on site.

Revisions

**PLANNING
CONDITION ISSUE**

Project Kingsgate Liddell
Project No. KL037
Client Camden council
Date 18.01.2017
Scale 1:10/100 @ A1
Drawing Name. Low level and high level bench
Dwg No. KL037.F.SD.502

Revision