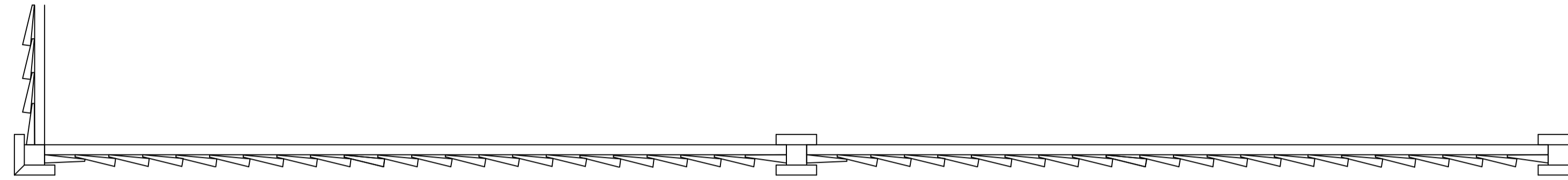
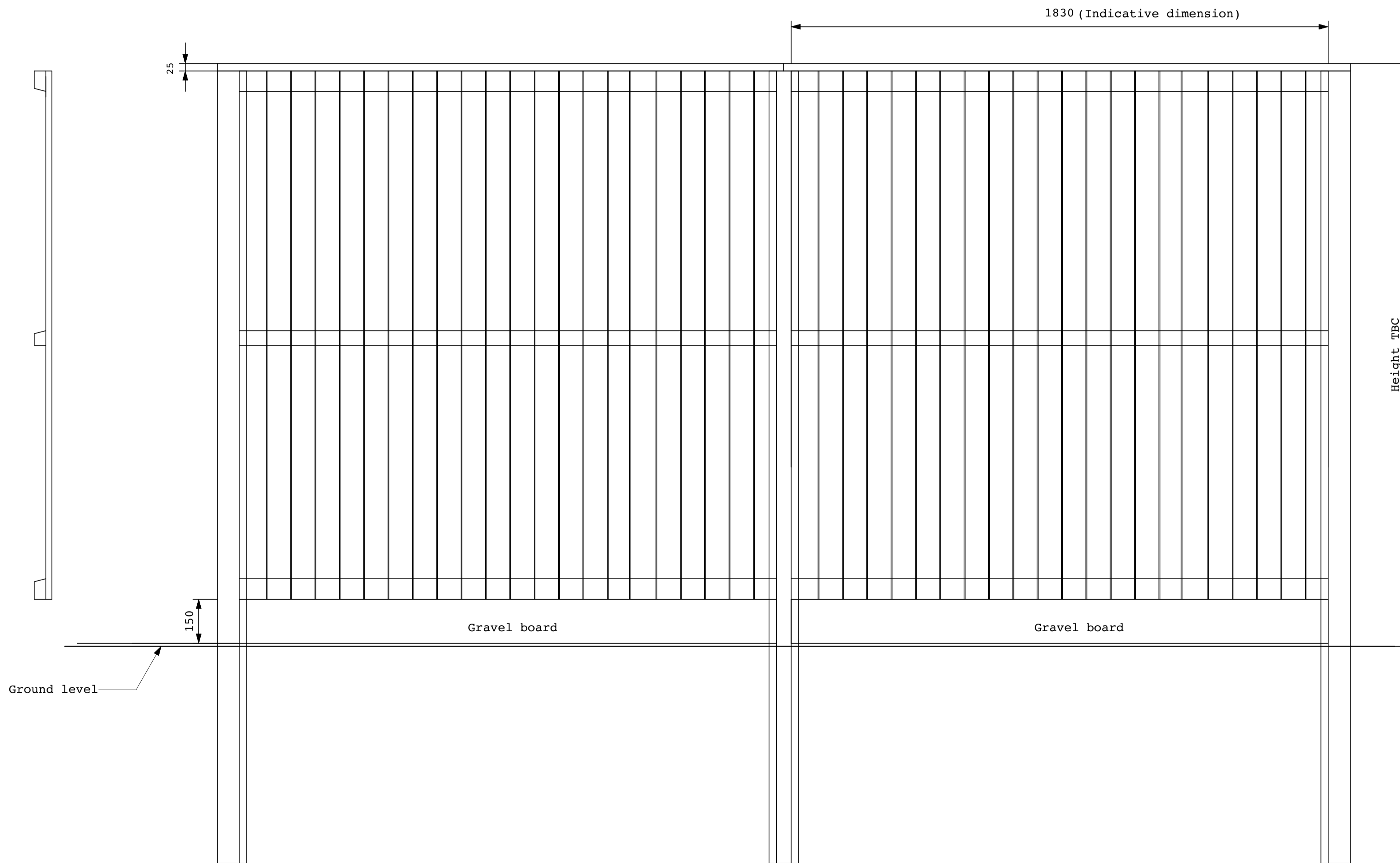


CLOSEBOARD TIMBER FENCE
(WESTERN ACCESS/WESTERN PLAYGROUND)

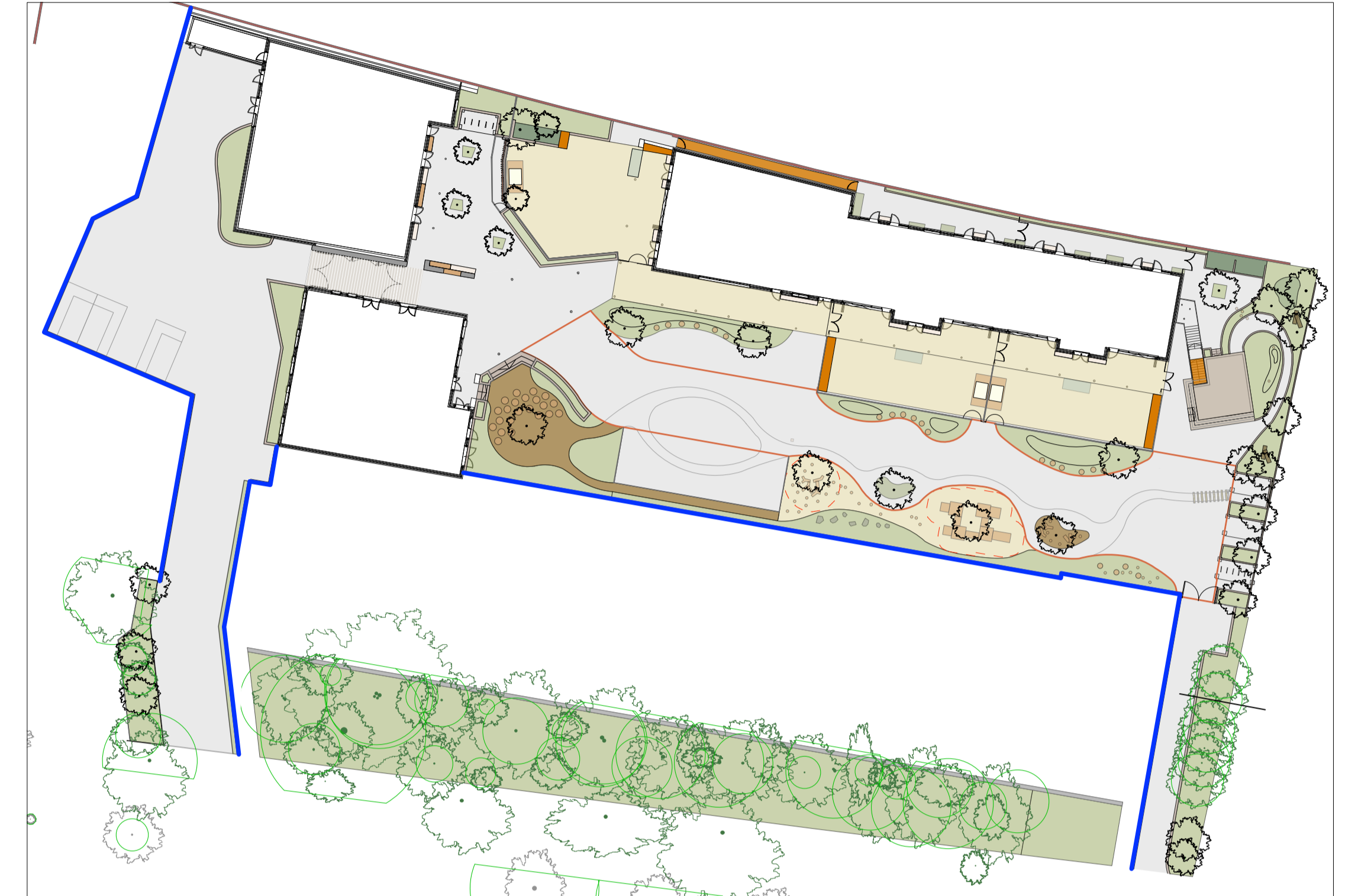
PLAN 1:10
(Standard post and frame arrangement)



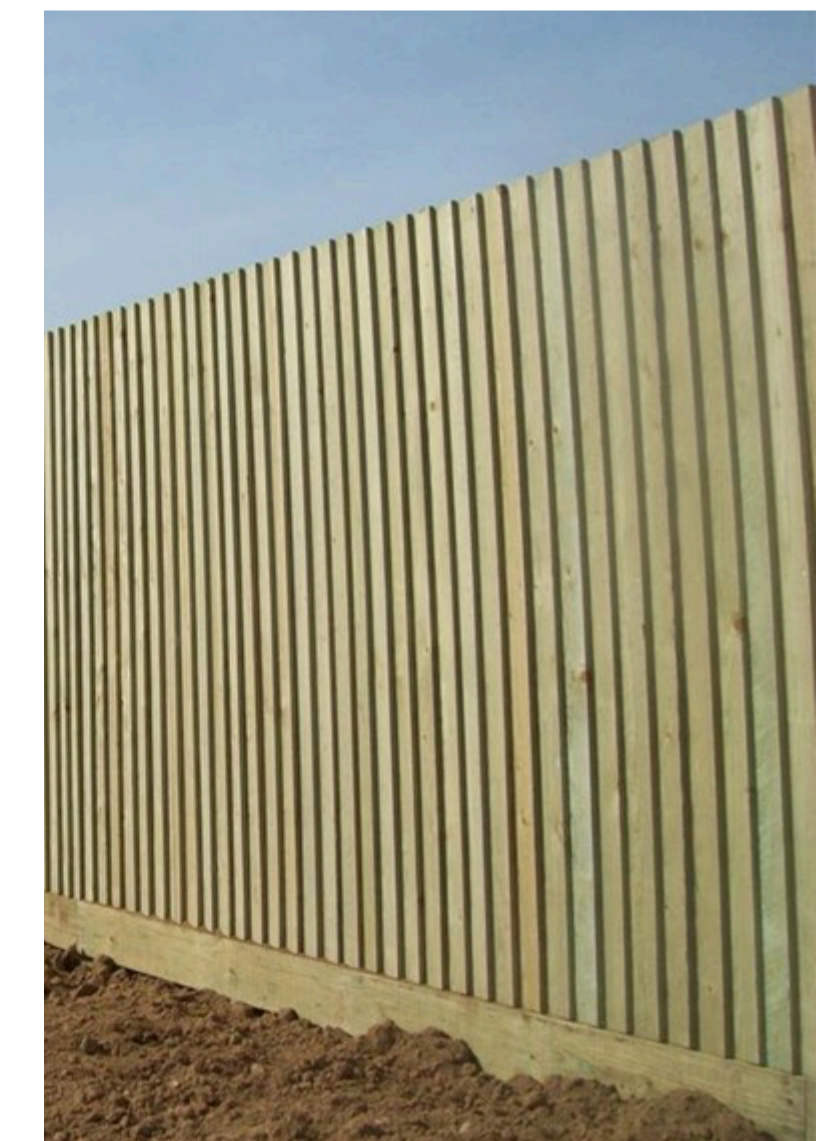
SECTION 1:10
(Standard post and frame arrangement)



LOCATION PLAN 1:500



Temporary closeboard timber fence to be replaced on phase 2



Illustrative image

Notes
Installation in accordance to manufacturers instructions

JCLA

3A Iliffe Yard
LONDON SE17 3QA
Telephone
+44 (0)207 703 3270

www.jcla.co.uk

Notes
- Do not scale from drawings.
- To be read in conjunction with all relevant Architects', Services and Structural Engineers' drawings.
- All existing site, tree and building information has been compiled from different sources.
- All dimensions to be checked on site.

Revisions
-

**PLANNING
CONDITION ISSUE**

Project Kingsgate Liddell
Project No. KL037
Client Camden council

Date 18.01.2017
Scale 1:10/20/100 @ A1

Drawing Name. Closeboard timber boundary fence
Dwg No. KL037.F.SD.408

Revision