

CHAS. E. GOAD, LTD.  
CIVIL ENGINEERS

# EXPLANATION OF SIGNS USED ON INSURANCE PLANS OF TOWNS & CITIES

56 CROUCH HILL  
LONDON N. 4.

## ABBREVIATIONS

- ASB. ASBESTOS
- CORR. CORRUGATED IRON
- D.I.D. DOUBLE IRON DOORS
- DRA. DRAPERY
- D. DWELLING
- ELECT. ELECTRICIAN
- (E.M.) ELECTRIC MOTORS
- (ENG.) STEAM ENGINE
- FURNE. FURNITURE
- GAR. GARAGE
- (G.E.) GAS ENGINE
- H.W. HARDWARE
- I.COLS. IRON COLUMNS OR STEEL STANCHIONS
- JWLY. JEWELLERY
- M.CL. METAL CLAD
- M.W. MANCHESTER WAREHOUSE
- m.l. MATCH (OR WOOD) LINED
- OIL OIL & COLOR
- (O.E.) OIL ENGINE
- P.H. PUBLIC HOUSE
- S. SHOP
- S.I.D. SINGLE IRON DOORS
- S.I.S. SINGLE IRON SHUTTERS
- TAI. TAILORS
- TENS. TENEMENTS
- W.G. WIRED GLASS
- W.N. WIRE NETTING OVER GLASS.

## COLORS

- BRICK, STONE OR CONCRETE
- WOOD
- AREAS CLEARED DUE TO ENEMY ACTION
- SKYLIGHTS ON 1 & 2 STORY BUILDINGS
- SKYLIGHTS ON HIGHER BUILDINGS
- METAL BUILDINGS.
- TIMBER PILED OR STACKED

## WALLS

- PARTY WALL 2 STORIES OR OVER, A PROBABLE FIRE CUT OFF.
- ENTIRE WALL, BUT DOUBTFUL AS FIRE CUT OFF
- DEFECTIVE WALL - IMPERFECT
- WALL ABOVE, IRON COLS: UNDER
- WALL SOME FLOORS ONLY (OR WOOD OR PLASTER PARTITION)
- ABOVE ROOF 6' TO 1'-6"
- D9— 1'-6" TO 2'-6"
- MATCH OR WOOD LINED
- WOOD CLAD WITH CORRUGATED IRON

## OPENINGS

- PASSAGE UNDER
- ON ALL FLOORS
- SOME FLOORS ONLY
- ALL FLOORS (PROTECTED)
- ALL FLOORS (SOME PROTECTED)
- SOME FLOORS ONLY (PROTECTED)
- ALL FLOORS (SOME PROTECTED)
- ALL FLOORS (PROTECTED)
- SOME FLOORS ONLY (PROTECTED)
- WOOD LOADING DOOR
- IRON LOADING DOOR

## WINDOWS

- ON ALL OR MOST FLOORS
- MORE THAN USUAL
- OVERLOOKING
- NEARLY ALL GLASS
- OPENINGS THRO' & WINDOWS OVER
- ON SOME FLOORS ONLY
- PROTECTED BY WIRED GLASS
- PROTECTED BY SINGLE IRON SHUTTERS
- PROTECTED BY DOUBLE IRON SHUTTERS.
- WINDOWS IN FRONT & REAR OF BUILDINGS UNDERSTOOD UNLESS OTHERWISE SHOWN

## FLOORS

- 1.2.3.3½ &c ON BUILDINGS ARE NUMBER OF STORIES ABOVE GROUND (3½=3 FLOORS & ATTIC)
- 2&2B MEANS 2 STORIES & 2 BASEMENTS EAST & SUB-BASEMENT.

## SKYLIGHTS

- A LESS THAN 50 SQUARE FEET (SAY 10'x5', OR 7'x7')
- OPENINGS THROUGH 2 FLOORS UNDER (EACH STROKE DENOTES AN OPENING.)
- WITH WELL HOLE THROUGH 3 FLOORS.
- LANTERN LIGHT, SIDES ONLY GLASS. OR VENT. OR RAISED VENTILATOR
- OVER 50 SQ. FT. TO SCALE

## HOISTS & LIFTS

- OPEN
- OPEN TO STREET
- OPEN (WOOD FLOORS TO FLOORS)
- ENCLOSED BRICK OR FIRE RESISTING WOOD OR PLASTER
- WIRED GLASS DOORS
- IRON DOORS SHOWN AS EXPLAINED UNDER "OPENINGS"

## ROOFS

- ASB ASBESTOS
- C CONCRETE
- CORR. CORRUGATED IRON
- T METAL
- P PATENT (FELT &c)
- O SLATE
- T TILE



## SUNDRIES

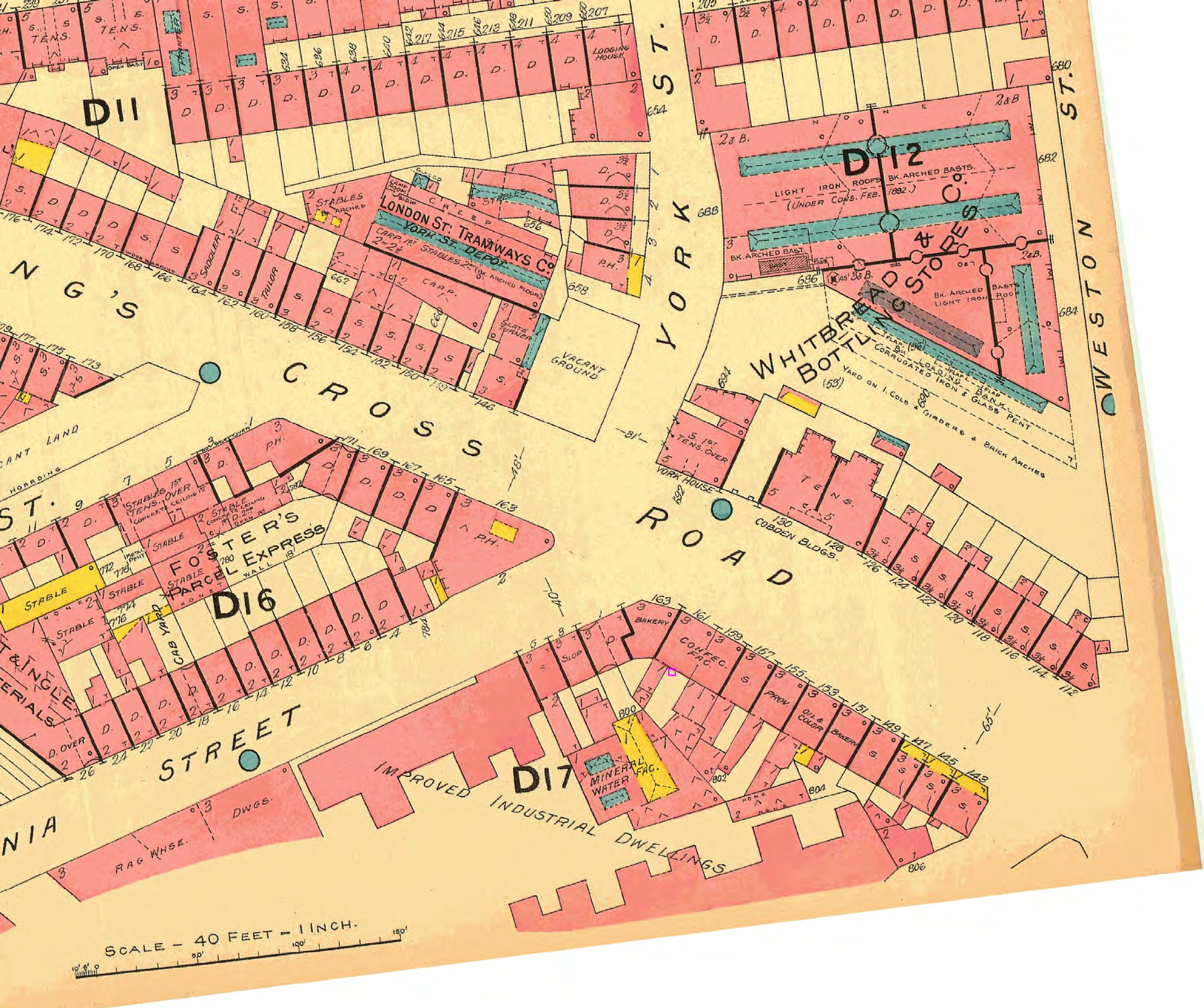
- STEAM BOILERS
- BOILER SET IN BRICK
- FACTORY CHIMNEYS
- (ENG.) STEAM ENGINE
- OVERHANGING WOOD CORNICE
- FIRE ALARM BOX
- D° ON KEY PLAN
- HYDRANT
- HYDRAULIC HYDRANT
- PRIVATE HYDRANT OR STAND PIPE
- DOUBLE HYDRANT
- SALT WATER HYDRANT
- SPRINKLER OR AUTO ALARM BELL

## REFERENCE NUMBERS

- NUMBERS PARALLEL WITH STREET ARE EXISTING STREET N<sup>OS</sup>
- WHERE TWO SETS OF STREET N<sup>OS</sup> IN SAME BLOCK COINCIDE, ADDITIONAL ARBITRARY N<sup>OS</sup> ARE GIVEN TO ONE SET (500 & UPWARDS)
- WHERE BUILDINGS TO WHICH THEY APPLIED ARE DEMOLISHED, STREET & ARBITRARY N<sup>OS</sup> ARE SHOWN & CROSSED THROUGH ON REVISION
- 48'— ARE STREET WIDTHS.
- (37') ARE HEIGHTS OF GROUND ABOVE ORDNANCE DATUM
- HEIGHT IN FEET OF ADJOINING BUILDINGS WHERE STORIES DIFFER IN HEIGHT
- SIZES OF WATER MAINS SUPPLYING HYDRANTS







SCALE - 40 FEET = 1 INCH.

