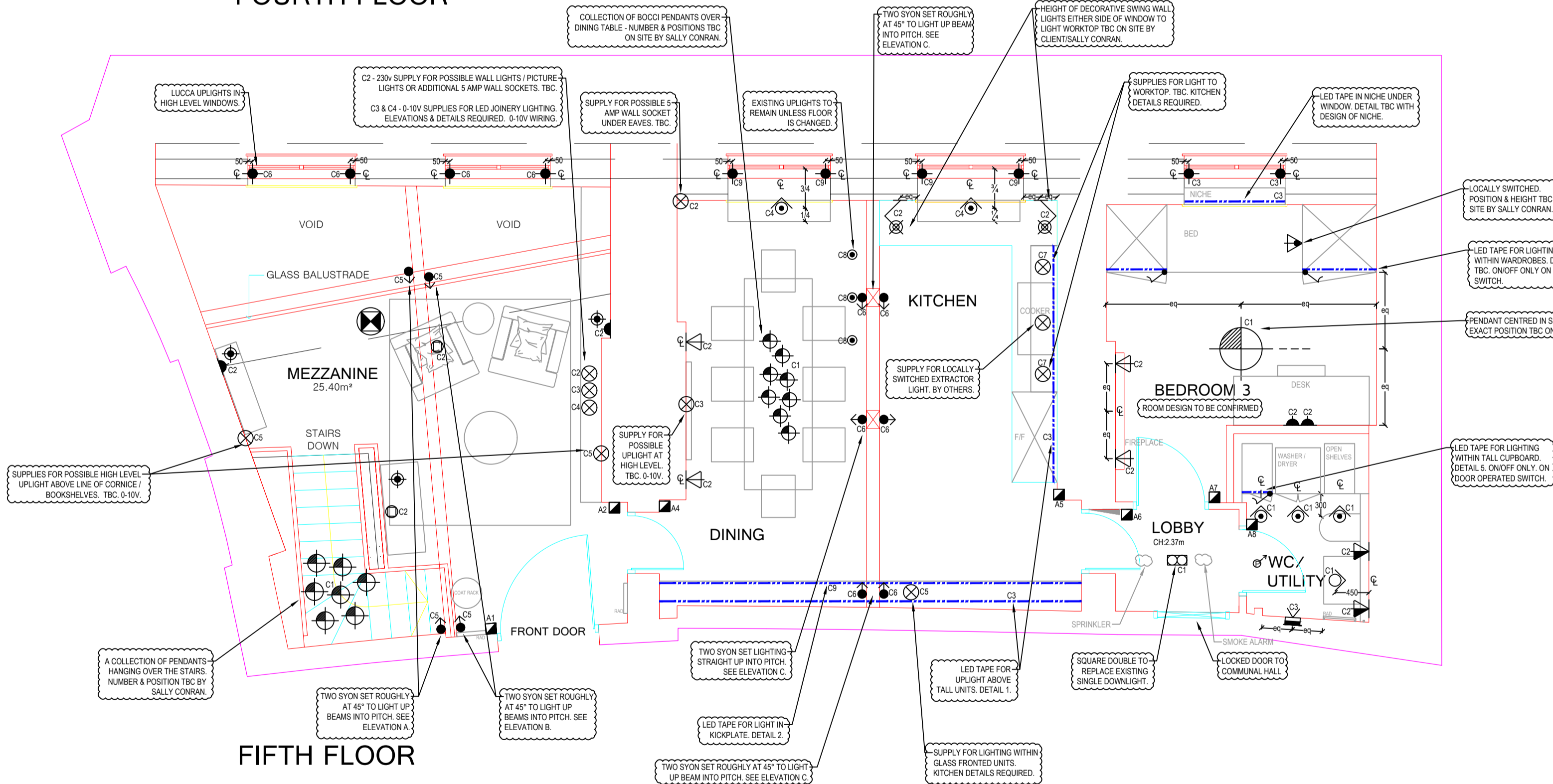
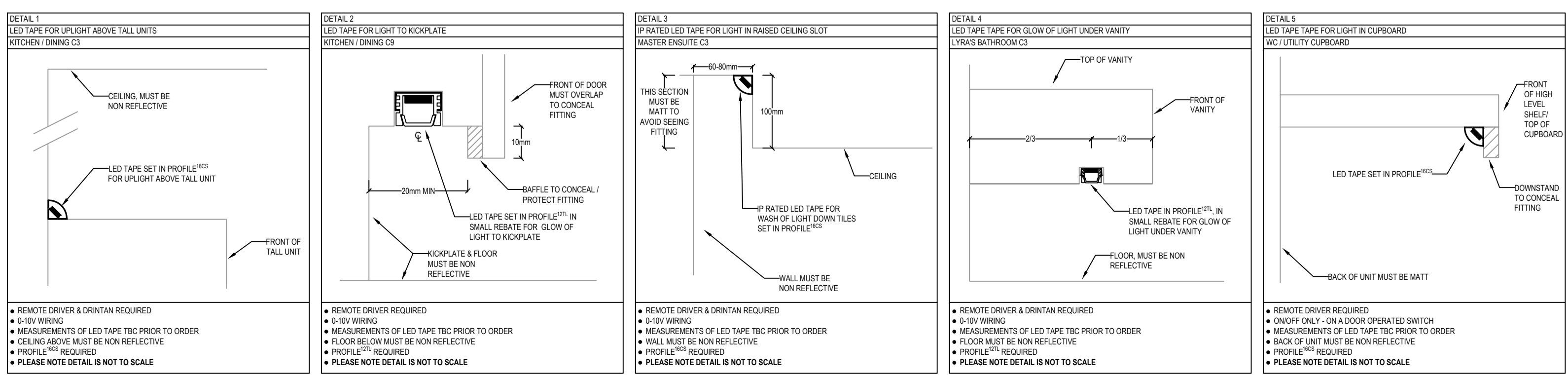


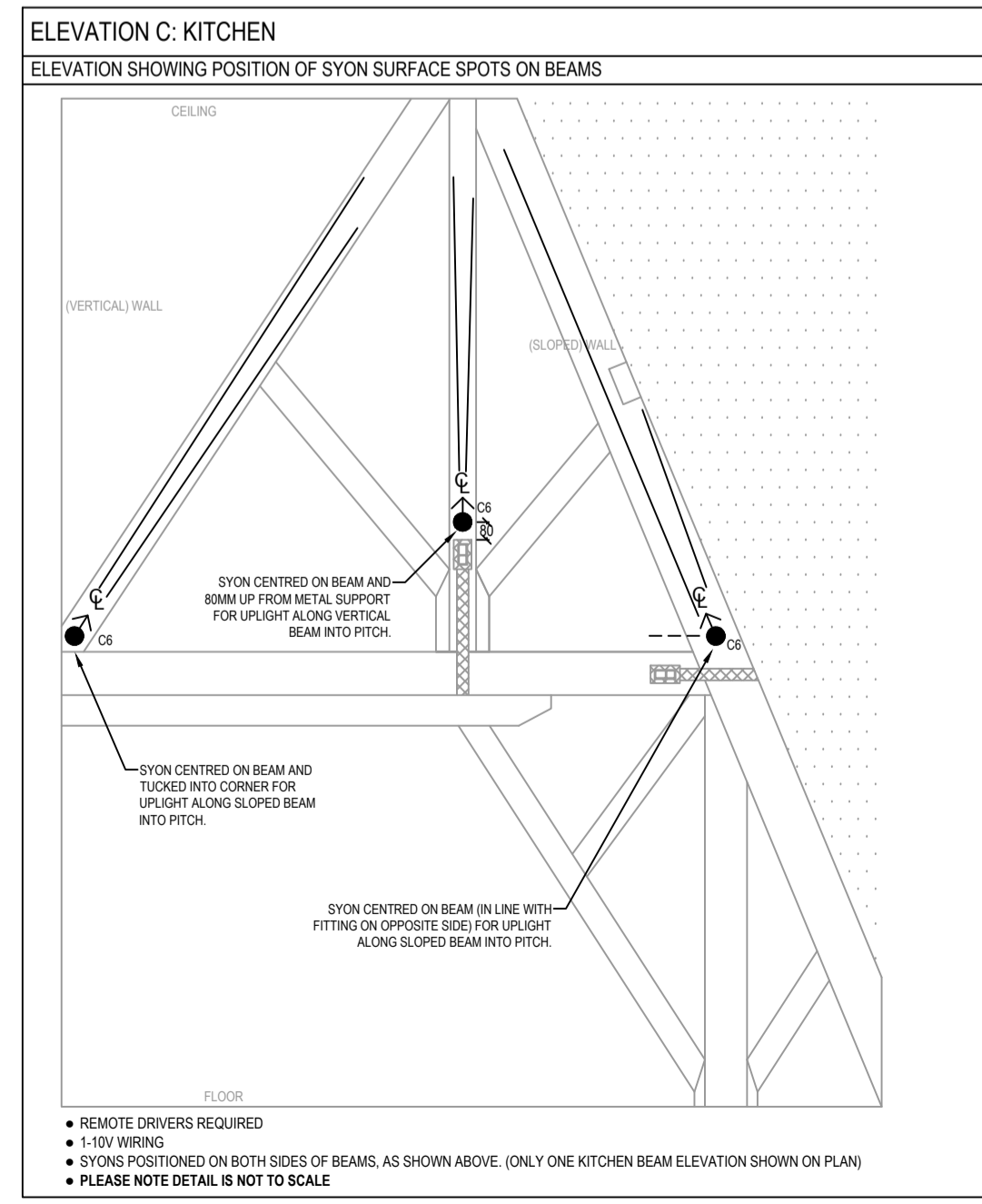
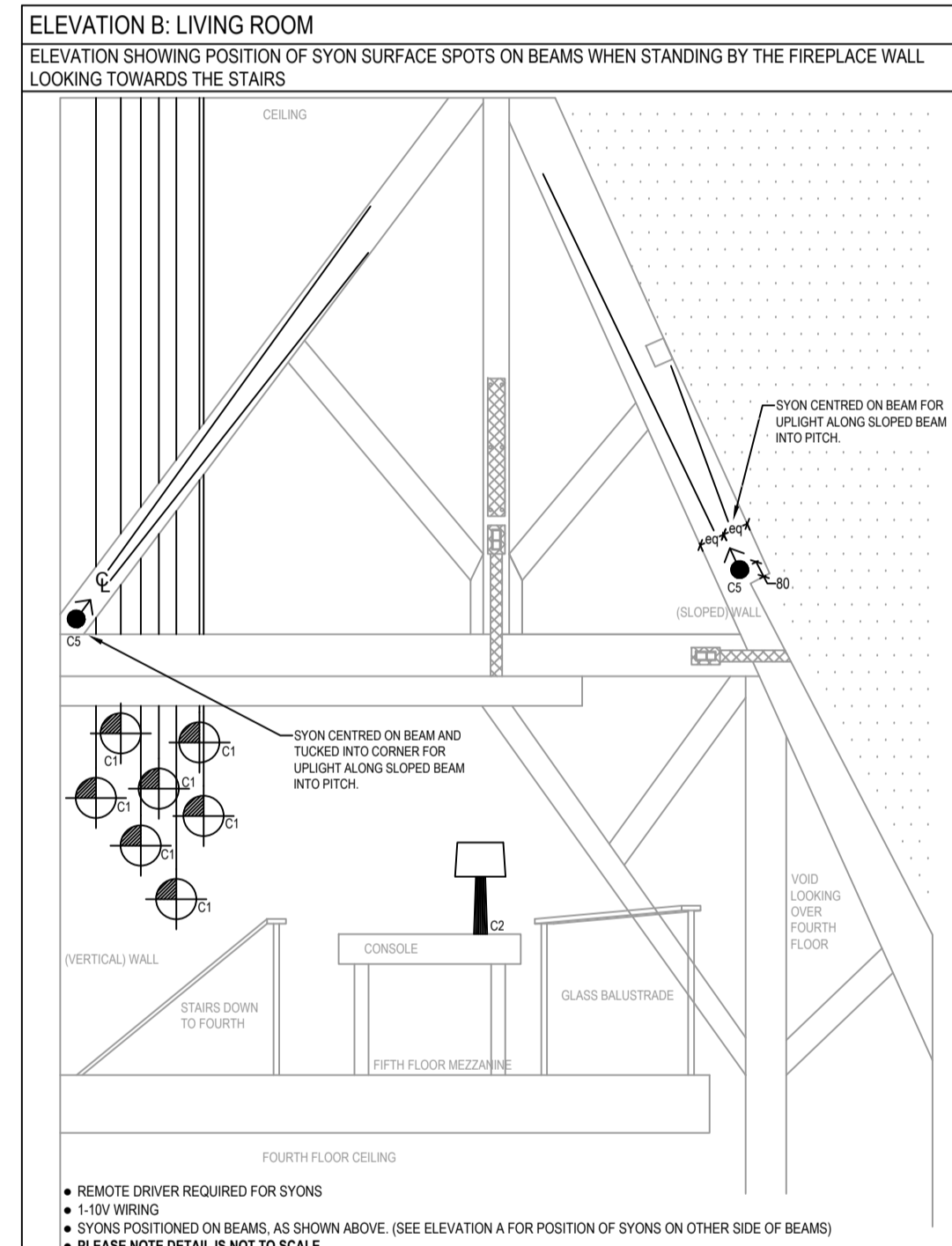
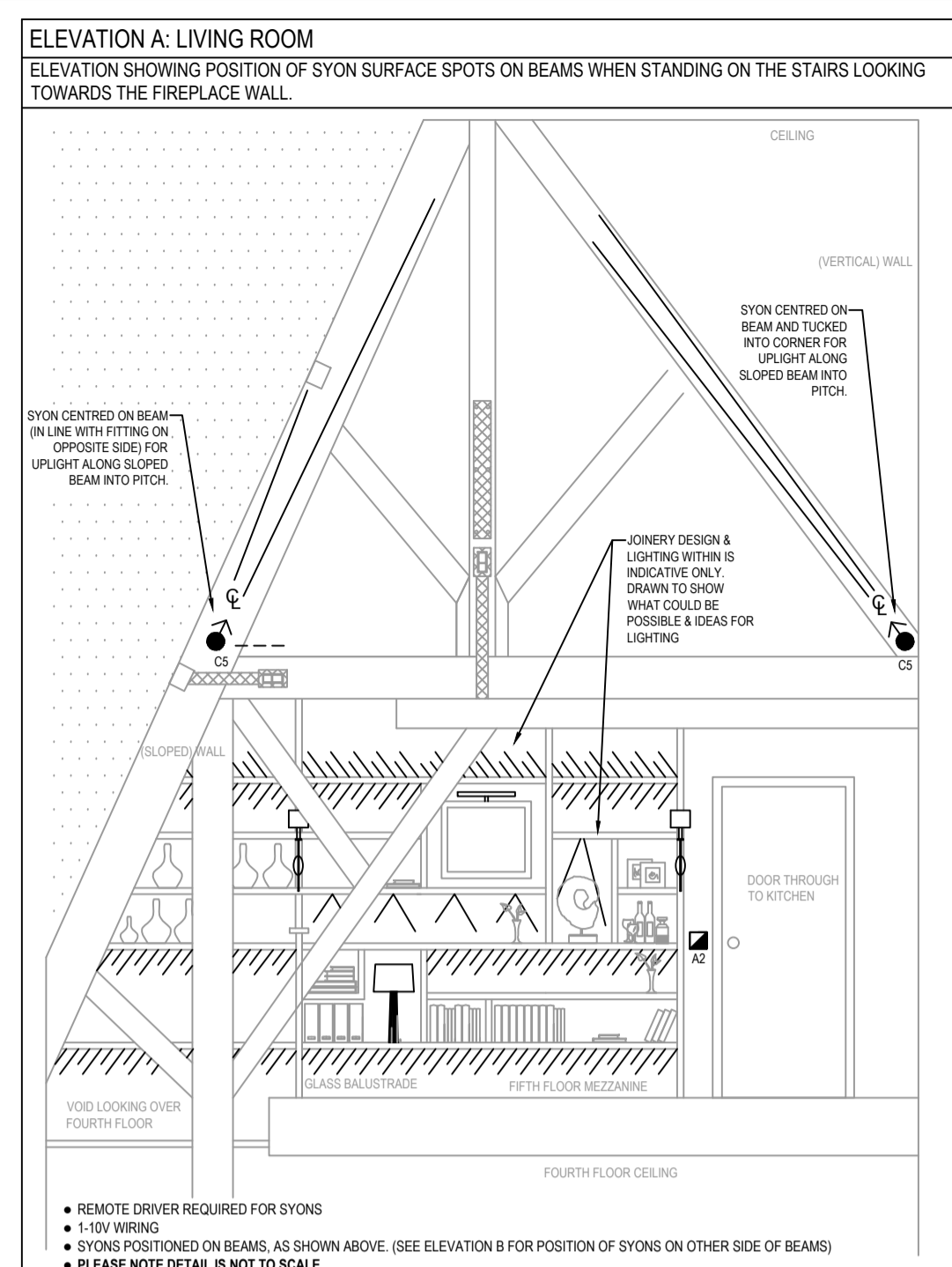
FOURTH FLOOR



FIFTH FLOOR



NOTE: The lighting layouts are based on plans provided by the architect/client. Positions of lights are based on features which are assumed to be correct. Light House Designs is not responsible for updating joinery details, furniture layouts or architectural features if they change during the project.



- KEY**
- WATERSRING WATERPROOF DOWNLIGHT
 - POLESRING DIRECTIONAL DOWNLIGHT
 - FAZER MINIATURE DIRECTIONAL DOWNLIGHT
 - SQUARE DOUBLE TRIMLESS DOWNLIGHT
- WALL RECESSED**
- LOW LEVEL FLOOR WASHER
 - EXISTING STEP WASHER
- FLOOR RECESSED**
- LUCINI UPLIGHT
 - EXISTING UPLIGHT
- BEAM MOUNTED**
- SYON MINATURE SURFACE MOUNTED SPOTLIGHT
 - MINOS SURFACE MOUNTED SPOTLIGHT
- SHELF LIGHTING**
- LED TAPE - CONTOUR^{PRO}
 - IP RATED LED TAPE - CONTOUR^{PRO}
 - LUCCA DOWNLIGHT
- DECORATIVE FITTINGS**
- DECORATIVE WALL LIGHT
 - BATHROOM WALL LIGHT
 - SWING ARM WALL LIGHT
 - LOCALLY SWITCHED WALL LIGHT
 - DECORATIVE PENDANT
 - PICTURE LIGHT
 - TABLE LAMP
 - FLOOR LAMP
- SOCKETS + CONTROL**
- 5 AMP WALL SOCKET
 - 5 AMP FLOOR SOCKET
 - SUPPLY (FOR FUTURE LIGHTING)
 - DOOR OPERATED SWITCH
 - AUXILIARY KEYPAD
 - PIR
- DIMENSIONS**
- EQUAL DISTANCE
 - HALF-EQUAL DISTANCE
 - DISTANCE OFF
 - CENTRE LINE
 - IN LINE WITH
 - CEILING HEIGHT

Plan Notes:

- All wall lights, bathroom wall lights and low level lights, to have heights confirmed prior to installation.
- The plasterboard around a recessed directional down light may need chamfering to achieve maximum tilt.
- If joists conflict with positioning of downlight please contact LHD to confirm new position.
- All lengths of LED to be measured by builder on site prior to ordering.
- Quantity of Drivers per fitting is to be calculated by builder/electrician prior to ordering.
- Small power by client - not shown on plan.

Position Notes:

- Position of all lights to be from centre of fitting.
- Decorative wall lights set at 1750mm from FFL.
- Syon surface mounted spot lights to be mounted on beams as per elevations on plan.
- Decorative bathroom wall/mirror lights set at 1600mm from FFL.
- Recessed uplights set 50mm from vertical face.
- Skirting heights must be confirmed prior to installation of all low level floor washers. For first fix wire at 200mm from FFL.
- Position of PIR sensors TBC by contractor depending on radius of detector.
- Exact height/position of sockets and switches by besides is dependant on size & position of bed. To be confirmed on an elevation by Client/Interior Designer/Architect.



CLIENT NAME: MARK REDMAN
 SITE ADDRESS: 5.33 ST PANCRAS CHAMBERS, EUSTON ROAD, LONDON, NW1
 DRAWING TITLE: ST PANCRAS CHAMBERS LIGHTING PLAN
 SCALE: 1:50 @ A1
 DESIGNER: TAMARA FITZHERBERT
 DRAWN: TF
 FIRST ISSUE: 2nd February 2017

Unit 11a Oxleaze Farm Workshops, Filkins, Lechlade, Glos. GL7 3RB
 m: 07775848532 e: jomann@light-housedesigns.com
 www.light-housedesigns.com