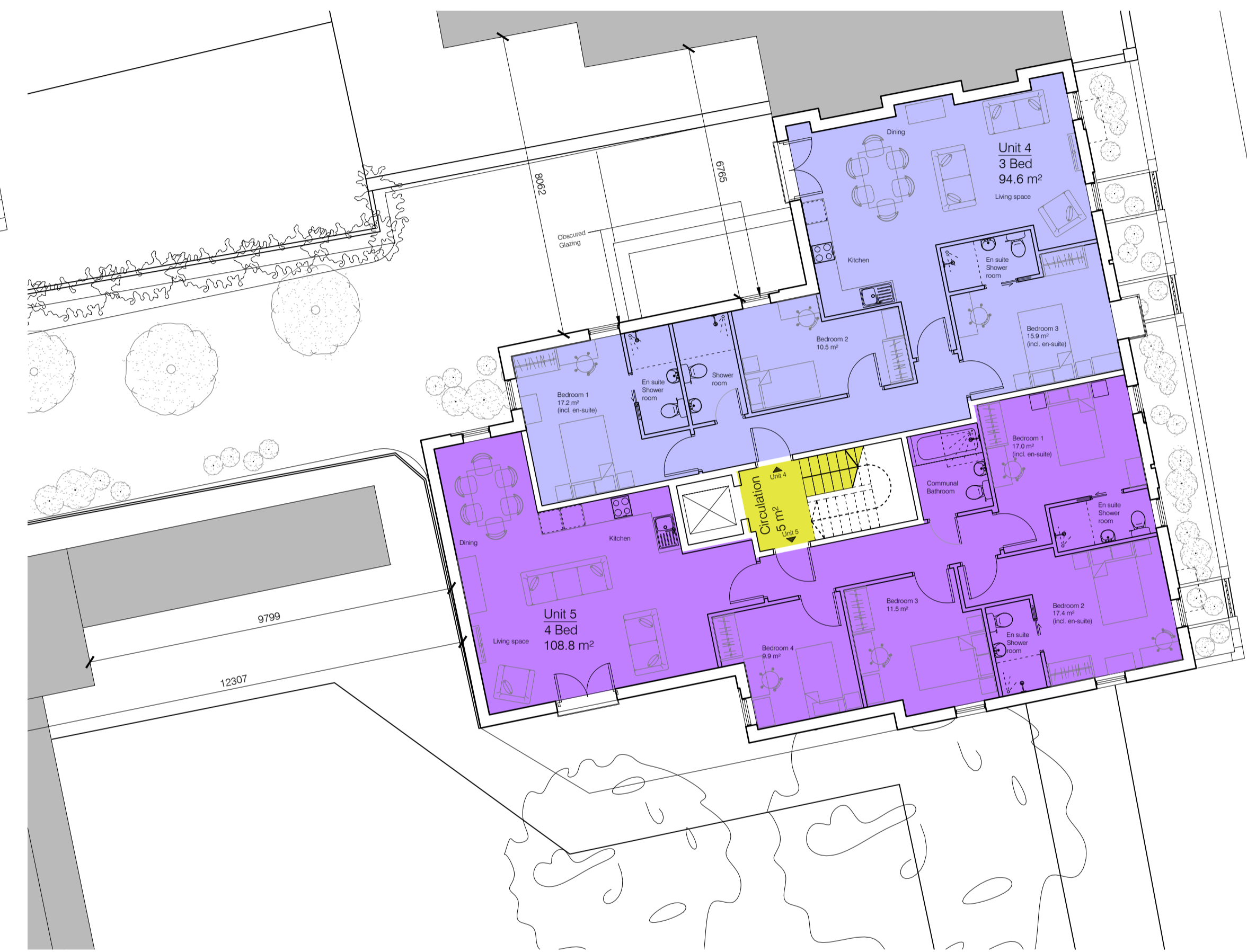




Site Plan / Ground Floor  
Scale 1:100



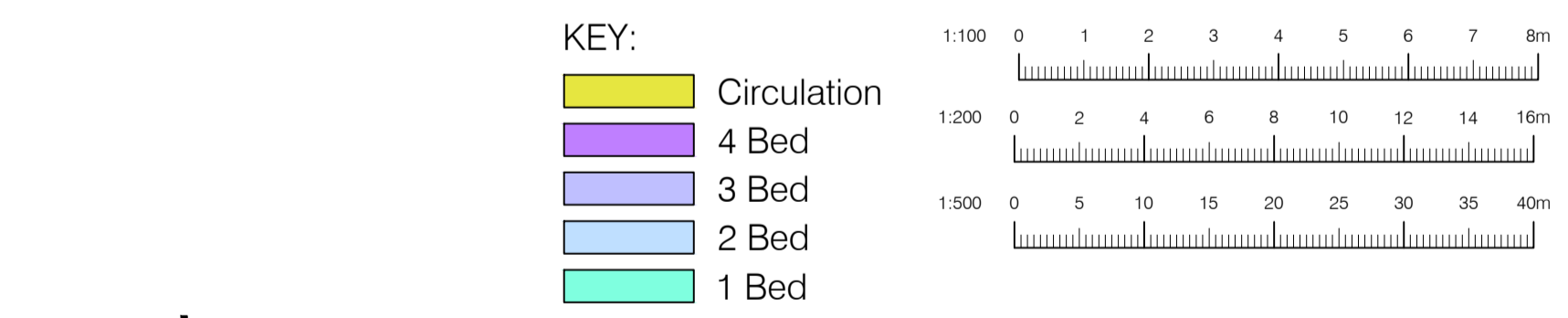
First Floor  
Scale 1:100

Schedule of Accommodation

Floor	1 Bed	2 Bed	3 Bed	4 Bed	Total Units	Total Bedrooms
Ground Floor	2		1		3	5
First Floor			1	1	2	7
Second Floor		2			2	6
Third Floor		2			2	4
<b>Total</b>	<b>2</b>	<b>2</b>	<b>4</b>	<b>1</b>	<b>9</b>	<b>22</b>

Outdoor Space  
\*\*Total area does not include communal Amenity space

Floor	Unit	1 Bed	2 Bed	3 Bed	4 Bed	Terrace	Total Area** (m²)
Ground Floor	1				Y	Y	12.0
	2	Y				N	-
	3	Y				Y	14.6
First Floor	4			Y		N	-
	5				Y	N	-
Second Floor	6			Y		N	-
	7				Y	Y	10.5
Third Floor	8		Y			Y	8.7
	9		Y			Y	14.0
<b>Total</b>	<b>9</b>	<b>2</b>	<b>2</b>	<b>4</b>	<b>1</b>	<b>5</b>	<b>59.8</b>



Floor	1 Bed Area (m²) [min. 50m²/unit]	2 Bed Area (m²) [min. 61-70m²/unit]	3 Bed Area (m²) [min. 74-95m²/unit]	4 Bed Area (m²) [min. 90-117m²/unit]	Total Area (m²)	Circulation (m²)	Total Gross Internal Area (m²)
Ground Floor	104.7		93.1		197.8	15.3	213.1
First Floor			94.6	108.8	203.4	5.1	208.5
Second Floor			185.7		185.7	5.1	190.8
Third Floor		136.3			136.3	10.0	146.3
<b>Total</b>	<b>104.7</b>	<b>136.3</b>	<b>373.4</b>	<b>108.8</b>	<b>723.2</b>	<b>35.5</b>	<b>804.8</b>

Rev	Date	Details	Drawn by
A	01.09.15	Box windows removed as per planners comments.	JW
B	20.10.15	Box windows restored in line with planners comments.	JW
C	06.04.16	Plans revised to incorporate larger site footprint further to clients instructions.	JW
D	12.04.16	Site Plan revised to incorporate landscaped frontage to York Way.	JW
E	27.04.16	Ground Floor layout amended to increase size of 3 Bed unit, staircase handed to suit.	JW
F	29.04.16	Floor plan layouts amended further to client feedback to increase bedroom size and storage space.	JW
G	15.09.16	Cycle store amended. Sheffield stairs indicated.	AMN
H	29.09.16	Floor plan layouts amended to meet Part M and Appendix D standards.	JG
I	21.10.16	Revised to suit Nexus Planning comments	SH
J	11.01.17	Revised to suit Conservation Officers comments	SH
K	06.03.17	Cycle store revised to suit Planning Officers comments	SH
L	09.03.17	Cycle store revised to suit Planning Officers comments	SH