

PRELIMINARY

BASEMENT FLOOR PLAN & PILE LAYOUT
SCALE 1:50

25mm DRY PACK MORTAR RANMED INTO PLACE ONCE CONCRETE UNDERPINNING HAS REACHED AN AGE OF AT LEAST 3 DAYS

NEIGHBOURING BUILDING

INTERNAL

NEW FLOOR LEVEL

PROTRUDING BRICK CORBEL/CONCRETE TO BE REMOVED (SHOWN INDICATIVE ONLY)

WALL REINFORCEMENT SHOWN INDICATIVE ONLY

SEE DRAWING S07 FOR DEPTH OF EXISTING FOUNDATIONS

FLOOR FINISHES BY OTHERS

150mm VOID FORMER

300mm THICK RC35 CONCRETE SLAB FLOOR FINISHES BY OTHERS 1 LAYER A353 MESH TOP & BOTTOM REINFORCEMENT

PROPOSED BASEMENT FINISHES SS1 17.680m

H12-12-200 LINKS

NEW WALL CONSTRUCTION

25mm THICK RC35 CONCRETE SLAB WITH H12 AT 200 c/c EACH WAY TOP REINFORCEMENT H12 AT 200 c/c EACH WAY BOTTOM REINFORCEMENT

EXTENT OF EXISTING FOUNDATION TO BE REMOVED SHOWN INDICATIVE ONLY

GROUND FLOOR LEVEL

GROUND LEVEL

NEW WALL CONSTRUCTION

GENERAL NOTES:

1. DO NOT SCALE THIS DRAWING OR MODEL. ALL DIMENSIONS ARE IN MILLIMETRES UNLESS NOTED OTHERWISE. ANY DISCREPANCIES ARE TO BE RECORDED AND REPORTED TO THE ENGINEERS IMMEDIATELY.

2. THIS DRAWING IS TO BE READ IN CONJUNCTION WITH ALL OTHER ENGINEERS AND ARCHITECTS DRAWINGS AND THE SPECIFICATION.

3. ALL WORK IS TO BE TO THE SATISFACTION OF THE ENGINEER AND LOCAL AUTHORITY BUILDING CONTROL.

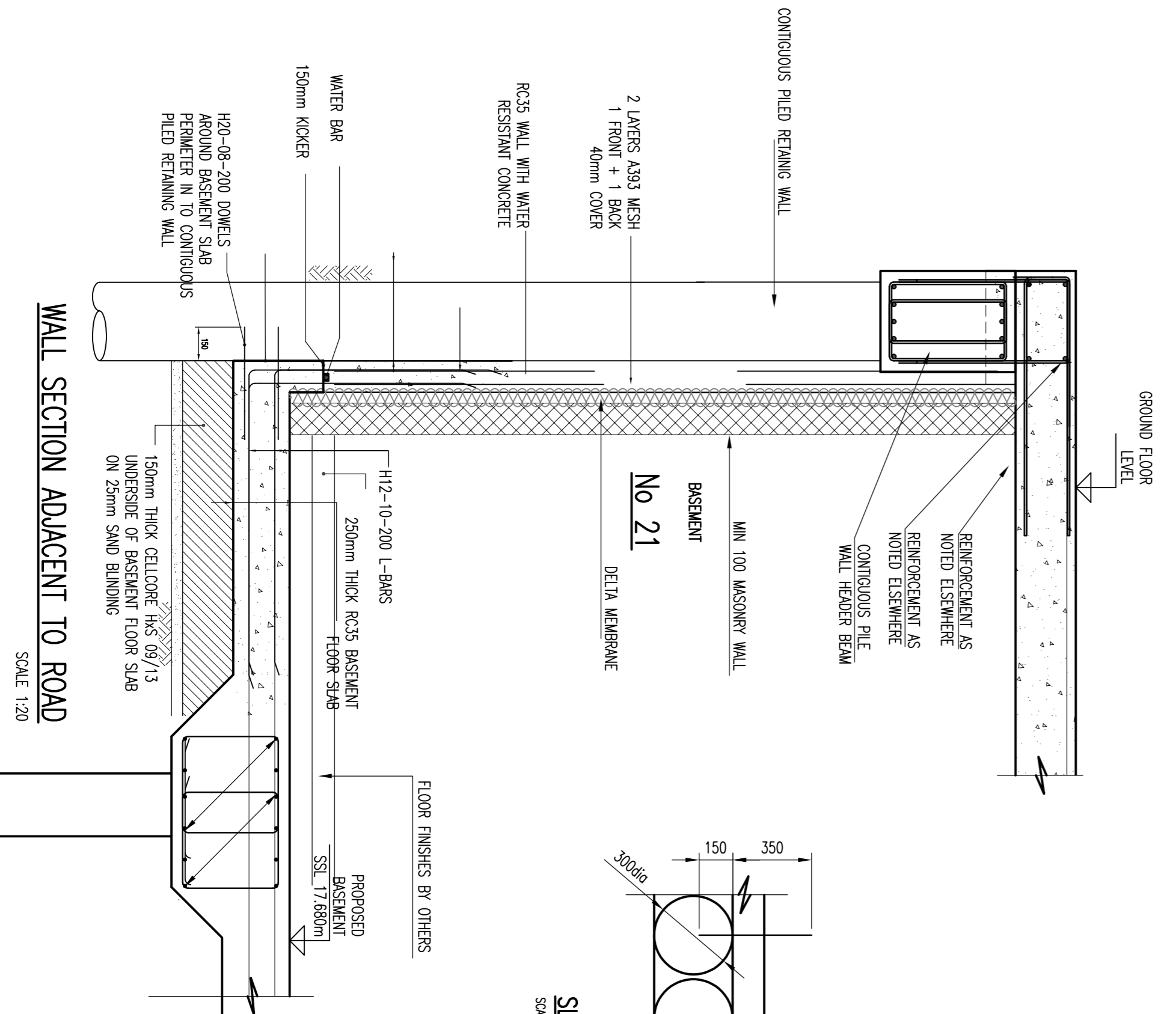
No 21

No 21

No 22

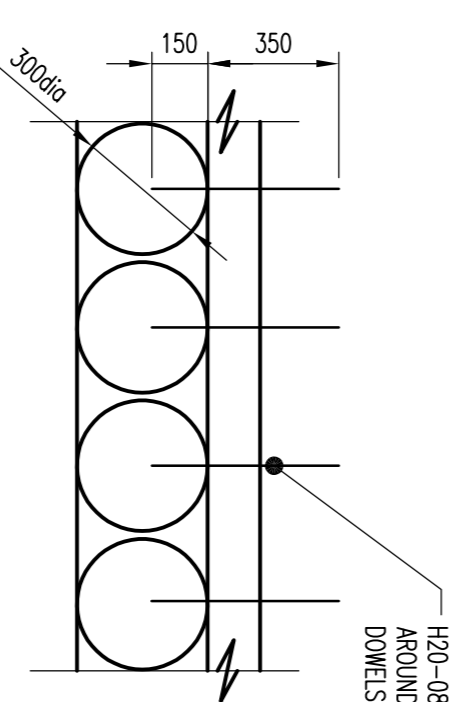
TYPICAL SECTION WHERE UNDERPINNED
SCALE 1:20

PARTY WALL SECTION 21/22
SCALE 1:20



WALL SECTION ADJACENT TO ROAD
SCALE 1:20

SLAB DOWELING DETAIL
SCALE 1:20



H20-08-200 DOWELS (TOP + BM) AROUND BASEMENT SLAB PERIMETER DOWELS TO FIX INTO CENTRE OF PILES

REINFORCEMENT AS NOTED ELSEWHERE

CONTIGUOUS PILE WALL HEADER BEAM

REINFORCEMENT AS NOTED ELSEWHERE

CONTIGUOUS PILED RETAINING WALL

MIN 100 MASONRY WALL

DELTA MEMBRANE

2 LAYERS A353 MESH 1 FRONT + 1 BACK 40mm COVER

RC35 WALL WITH WATER RESISTANT CONCRETE

WATER BAR

150mm KICKER

H20-08-200 DOWELS AROUND BASEMENT SLAB PERIMETER DOWELS TO FIX INTO CENTRE OF PILES

150mm THICK CELLOLORE HAS 09/13 UNDERSIDE OF BASEMENT FLOOR SLAB ON 25mm SAND BLINDING

FLOOR FINISHES BY OTHERS

PROPOSED BASEMENT FINISHES SS1 17.680m

H12-10-200 L-BARS

250mm THICK RC35 BASEMENT FLOOR SLAB

150mm THICK RC35 CONCRETE SLAB WITH H12 AT 200 c/c EACH WAY TOP REINFORCEMENT H12 AT 200 c/c EACH WAY BOTTOM REINFORCEMENT

PROTRUDING BRICK CORBEL/CONCRETE TO BE REMOVED (SHOWN INDICATIVE ONLY)

WALL REINFORCEMENT SHOWN INDICATIVE ONLY

SEE DRAWING S07 FOR DEPTH OF EXISTING FOUNDATIONS

FLOOR FINISHES BY OTHERS

150mm VOID FORMER

300mm THICK RC35 CONCRETE SLAB FLOOR FINISHES BY OTHERS 1 LAYER A353 MESH TOP & BOTTOM REINFORCEMENT

PROPOSED BASEMENT FINISHES SS1 17.680m

H12-12-200 LINKS

NEW WALL CONSTRUCTION

25mm THICK RC35 CONCRETE SLAB WITH H12 AT 200 c/c EACH WAY TOP REINFORCEMENT H12 AT 200 c/c EACH WAY BOTTOM REINFORCEMENT

GROUND FLOOR LEVEL

GROUND LEVEL

NEW WALL CONSTRUCTION

No.	Description	By	Scale	Date
01	GENERAL REVISIONS/CONSTRUCTION	MS	50%	02/03/17
02	REVISIONS FOR PROVISION	MS	50%	27/01/17
03	REVISIONS FOR PROVISION	MS	50%	16/01/17
04	REVISIONS FOR PROVISION	MS	50%	16/01/17

jms CIVIL & STRUCTURAL CONSULTING ENGINEERS
 10th Floor, 111, Victoria Court, Victoria Street, Newport, NP23 5JY
 Tel: 01493 547 229
 Fax: 01493 547 229
 Email: info@jms-engineers.co.uk
 Website: www.jms-engineers.co.uk

Project: 20-21 KING'S MEWS LONDON, WC1N		Client: CAPITAL & PROVINCIAL (WORTHING) LTD	
Drawing Title: PROPOSED GROUNDWORKS PLAN AND PILE LAYOUT		Drawn by: DJS	Designed by: DJS
Scale: AS SHOWN		Checked by: DJS	Date: JAN 2017
Drawing No.: L15/284/12-511	Rev: P3		