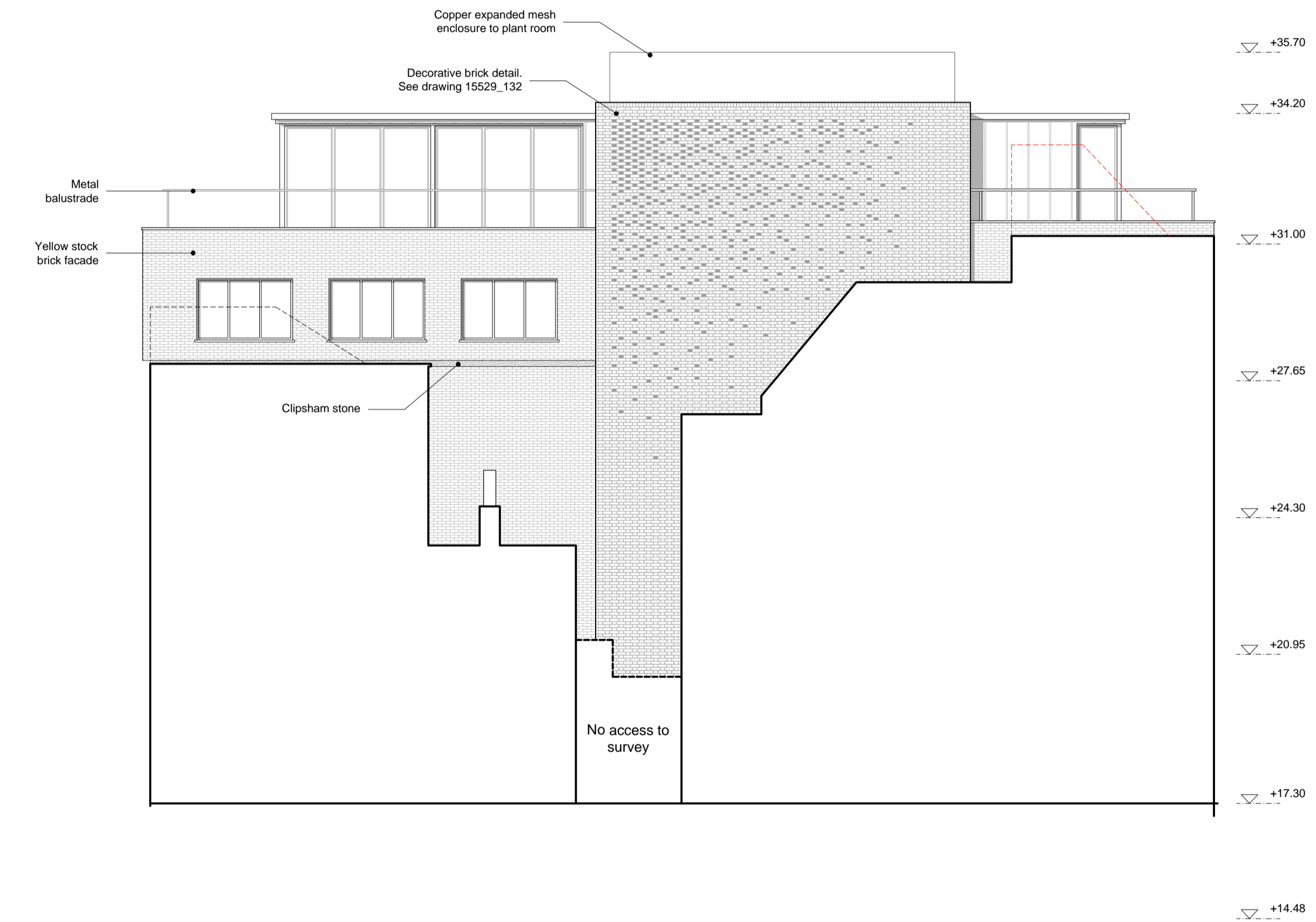


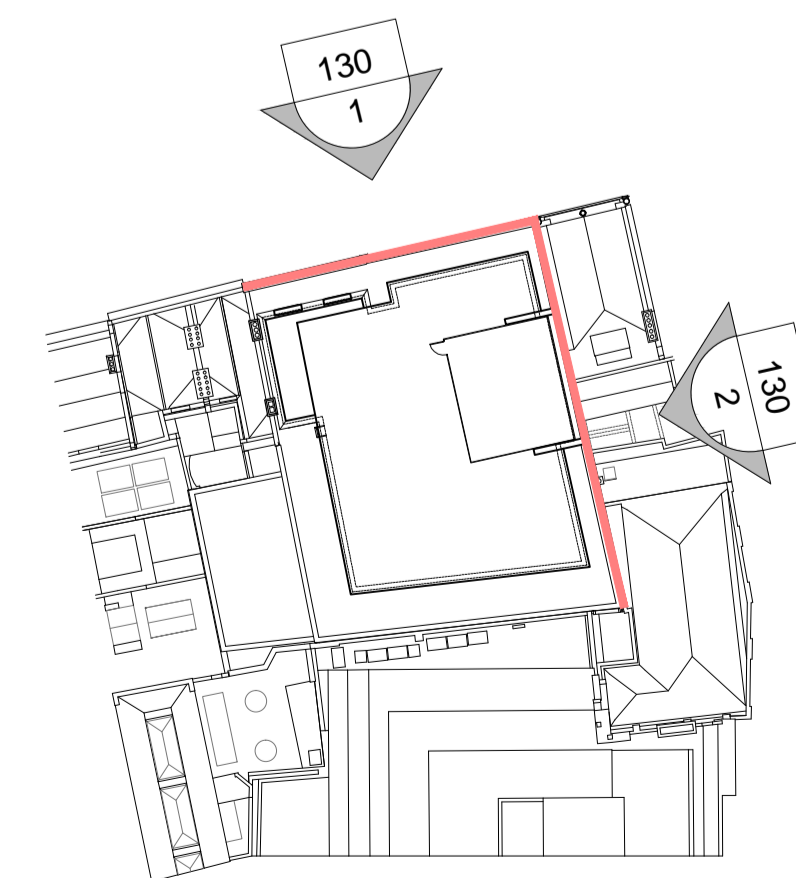
Demolition:
Items to be demolished shown
dashed & in red.



Elevation 1 - Greville Street



Elevation 2 - Bleeding Heart Yard



1:100 1 2 5m

P2	Dormers reduced and lead cladding to mansard	18.11.16
P1	Top floor amendment	03.08.16
P0	Planning	12.02.16
Rev	Issue	Date

Frost Architects

PROJECT
12 - 14 Greville Street
EC1N 8SB

DRAWING
Proposed Elevations 1 and 2

Status **PLANNING**

SCALE **1:100** SIZE **A1**
DRAWN BY **EQH**

PROJECT NO. **15229** DRAWING NO. **130** REV. **P2**