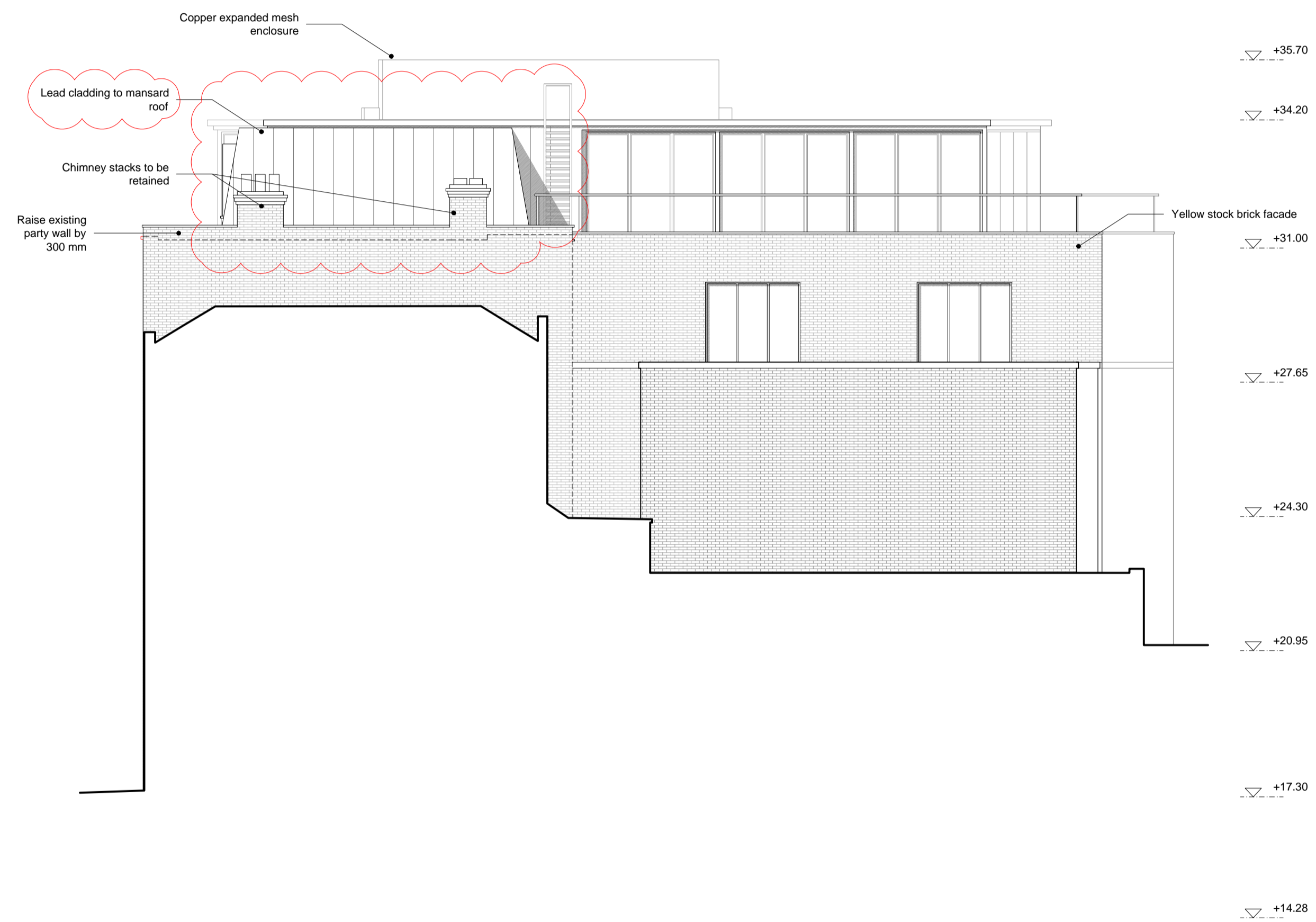
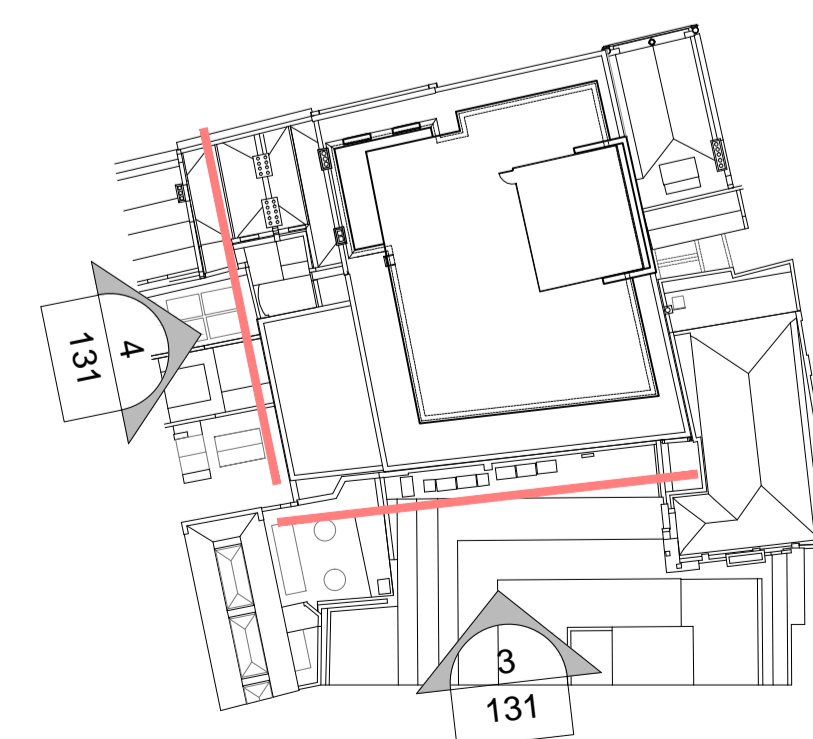


Elevation 3



Elevation 4



1:100 1 2 5m

Demolition:
Items to be demolished shown
dashed & in red.

P2	Lead cladding to mansard roof	18.11.16
P1	Top floor amendment	03.08.16
P0	Planning	12.02.16
Rev	Issue	Date

Frost Architects

PROJECT
12 - 14 Greville
Street
EC1N 8SB

DRAWING
Proposed Elevations 3
and 4

Status **PLANNING**

SCALE	1:100	SIZE	A1
		DRAWN BY	EQH

PROJECT NO.	DRAWING NO.	REV.
15229	131	P2

Proposed Elevations 3 and 4