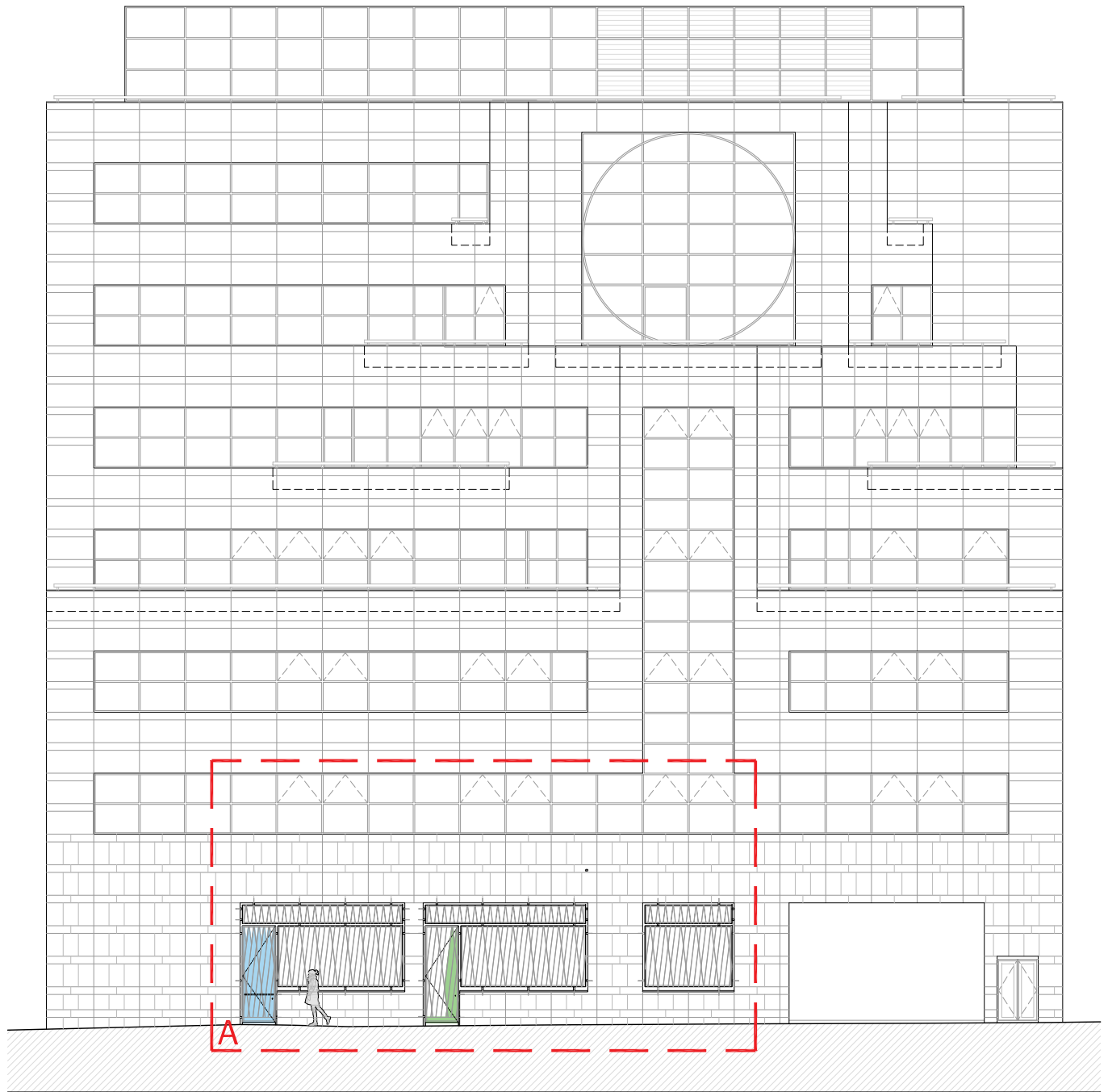
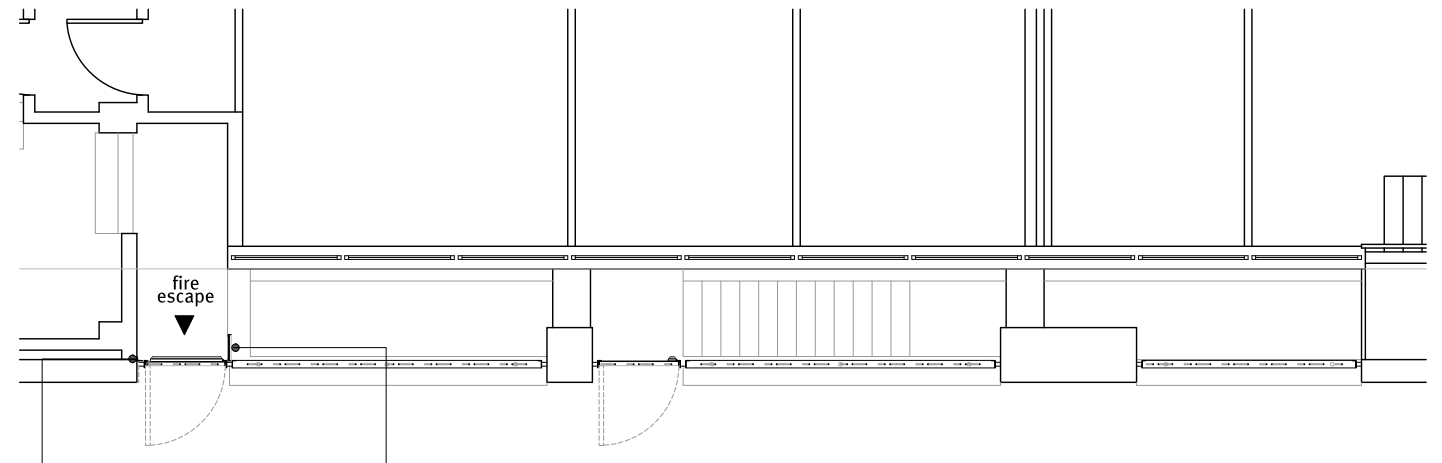


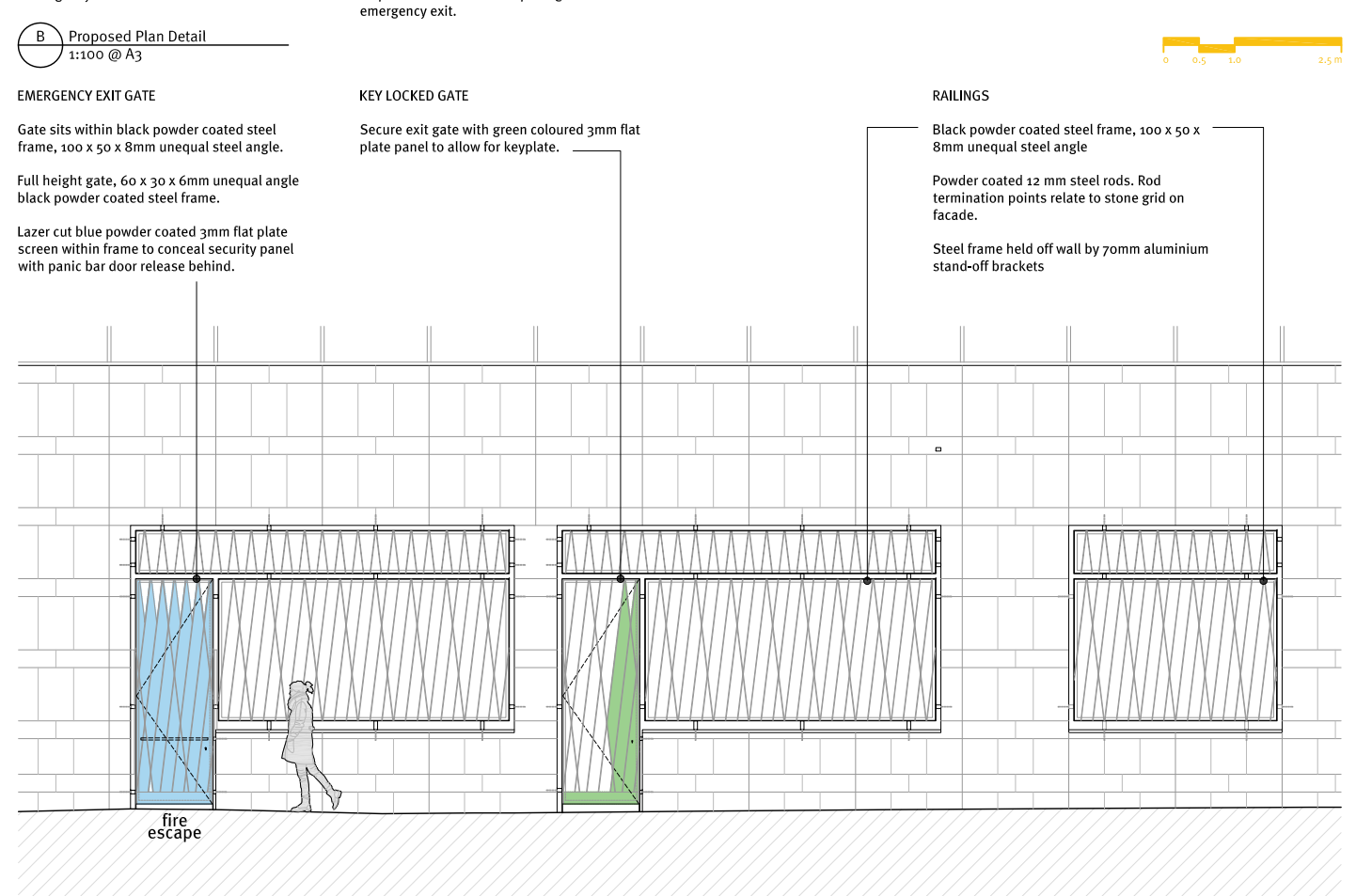
D Proposed Part Plan  
1:200 @ A3



C Proposed North Elevation  
1:200 @ A3



B Proposed Plan Detail  
1:100 @ A3



A Proposed Elevation Detail  
1:100 @ A3

Section Detail

METAL ANGLE  
To prevent reach around opening of emergency exit.

SECURITY SCREEN  
To prevent reach around opening of emergency exit.

STEPHENSON WAY

EMERGENCY EXIT GATE

Gate sits within black powder coated steel frame, 100 x 50 x 8mm unequal steel angle.

Full height gate, 60 x 30 x 6mm unequal angle black powder coated steel frame.

Lazer cut blue powder coated 3mm flat plate screen within frame to conceal security panel with panic bar door release behind.

KEY LOCKED GATE

Secure exit gate with green coloured 3mm flat plate panel to allow for keyplate.

RAILINGS

Black powder coated steel frame, 100 x 50 x 8mm unequal steel angle

Powder coated 12 mm steel rods. Rod termination points relate to stone grid on facade.

Steel frame held off wall by 70mm aluminium stand-off brackets

REV	DATE	COMMENT
A	19.01.2017	Set Out
B	13.02.2017	Set Out
C	16.02.2017	Emergency Exit updated
D	16.02.2017	Top screen adjusted

DISCLAIMER:  
This drawings is based on CAD drawings from a third party, as such 310 Studio cannot guarantee its accuracy.  
Do not scale dimensions off drawings. Use written or calculated dimensions. The contractor is responsible for checking dimensions before ordering or starting work.  
This document contains confidential and proprietary information that cannot be reproduced or divulged, in whole or in part, without written authorisation from 310 studio ltd.  
DRAWINGS NOT FOR CONSTRUCTION PURPOSES

#### STATUS: INFORMATION

PROJECT NAME:	DRAWING NUMBER	REVISION
THE WELLCOME TRUST 210 Euston Road	Lo37_A_G200_E_02	C
DATE:	DRAWING TITLE:	SCALE:
19.01.2017	PROPOSED ELEVATION North	1:200 @ A3



The Wool Hall  
12 St Thomas Street  
Bristol, BS1 6JJ  
TEL 020 34888 310  
0117 910 5200  
info@310studio.co.uk  
www.310studio.co.uk

310 studio