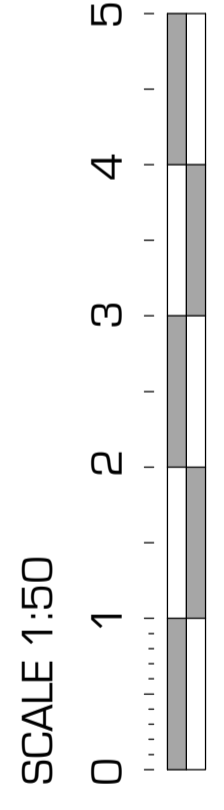


SCHEDULE OF EXTERNAL FINISHES

A	Stone Cladding - white polished portland limestone
B1	PPC Aluminum framed glazing system by SCHUCO ASS 70i HI or similar
B2	Aluminum framed glazing system by REYNAERS - windows, doors & curtain walls
B3	Door or glazing by others
C	Glazed balustrade (light green tinted) on steel frame
D	PPC metal louvered sunscreen by SCHUCO or similar
E	PPC metal work - dark grey
F	Steel beam painted black
G	Zink insulated panels
H	Brick - IBSTOCK - terracotta - Atlas smooth red or equal
I	Retail fascia - glazing system - clear glass, aluminium frame with vent grill
J	Terracotta natural clay cladding tiles
K	Opaque glazed privacy screens
L	Glazed sub-station and refuse Bin Storage
M	Flat roof
N	Green/brown roof by the Landscape Architects
O	Signage - by others
P	Roof Safety railing by ICB Sustainable Roof Solutions or similar
Q	Green wall systems by MMA (www.jakob.co.uk)
R	Glazed shop front
S	White smooth render

LEGEND - EXTERNAL MATERIALS

- BRICK
- BRICK SLIPS
- STONE CLADDING
- TERRACOTTA CLADDING
- ALUMINIUM CLADDING
- STEEL
- ZINK INSULATED PANELS
- "GREEN" WALL
- GLAZING



GENERAL NOTE:
All doors, windows & glazing to remain Schuco on this elevation

General Notes:
Report all errors, omission and discrepancies.
Verify all dimensions on site before commencing any work on site or preparing any shop drawings.
All materials, components and workmanship are to comply with the relevant British Standards, Codes of Practice and appropriate manufacturers' recommendations that from time to time shall apply.
this drawing and design remains the property of SIAW and may not be reproduced in any way without prior consent.



No.	Date	Initials	REVISION
A1	23.06.2015	LS	DRAINAGE DIAGRAM ADDITION - OPTIONAL (OMITTED)
B1	17.07.2015	LS	WINDOWS TAGGING
C1	09.09.2015	LS	WINDOWS, P1a LAMINATION INDICATION
D1	13.11.2015	LS	GLAZING FIRE RATING
E1	15.03.2016	LS	MATERIALS COLOUR CODE
F1	17.03.2016	LS	ALUMINIUM CLADDING CHANGED TO TERRACOTTA TILES - COLOUR MATCH RAL 7021
G1	01.04.2016	LS	DIMENSIONS ADDED - PLANS COORDINATION
H1	13.04.2016	LS	GLAZING FIRE RATING
J1	19.04.2016	LS	GLAZING - REVERT BACK TO TENDER / CONTRACT ARRANGEMENT
K1	01.07.2016	KZ	INDICATION OF BALCONY TYPE
L1	29.07.2016	LS	UPDATE TO EXTERNAL MATERIAL LEGEND
M1	08.08.2016	LS	ADDITION OF LETTER CODE LEGEND - EXTERNAL MATERIAL LEGEND

PROJECT
BRAVO HOSTEL
120 FINCHLEY ROAD
LONDON NW3 5HT

CLIENT
SISEM LTD

BLOCK A	DISCIPLINE ARCHITECTURE	STATUS CONSTRUCT.
LEVEL	DRAWING NUMBER A-FR14-C19	REVISION M
CAD FILE	XREF FILE	
JOB NO.	CJ/SIB	
DRAWING TITLE FRONT ELEVATION (FINCHLEY RD)		
SCALE 1:50	DATE APR 2015	DRAWN SL
		CHECKED IS

S. ILAN ARCHITECTURAL WORKSHOP

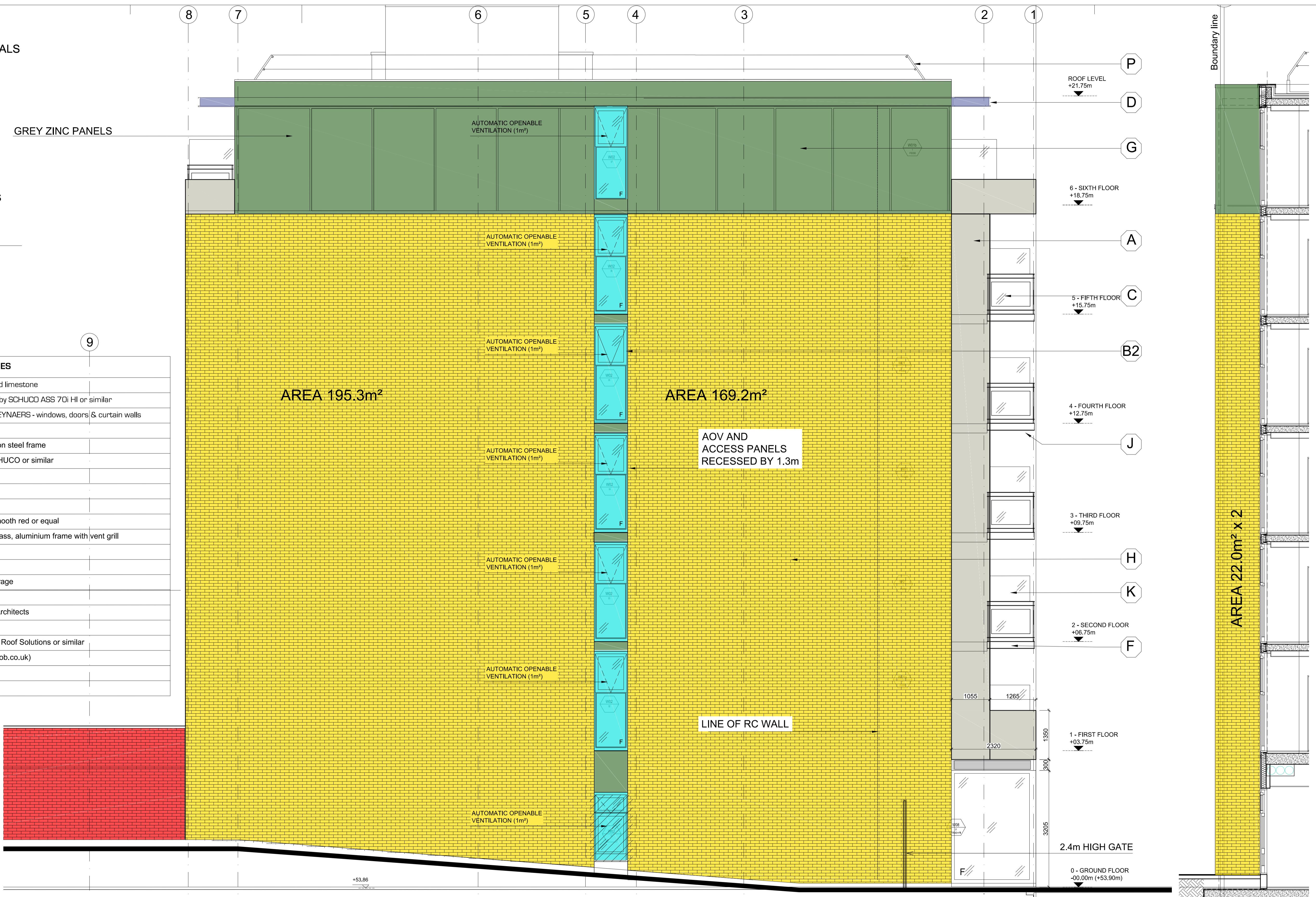
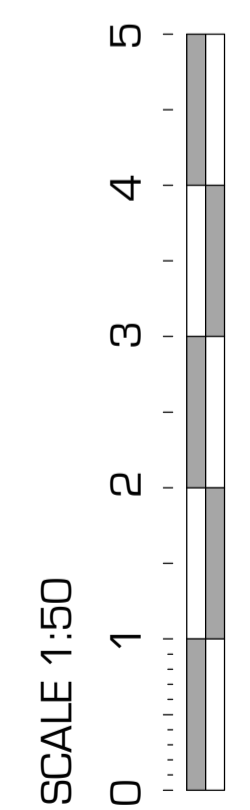
Winston House, Suite 332, 2 Dollis Park, London, N3 1HF
T. 020 8346 0628 F. 020 8346 0635 E. info@silan.co.uk

PROJECT TITLE BRAVO HOSTEL 120 FINCHLEY ROAD

LEGEND - EXTERNAL MATERIALS

- BRICK
- BRICK SLIPS
- STONE CLADDING
- TERRACOTTA CLADDING
- ALUMINIUM CLADDING
- STEEL
- ZINK INSULATED PANELS
- "GREEN" WALL
- GLAZING

SCHEDULE OF EXTERNAL FINISHES	
(A)	Stone Cladding - white polished portland limestone
(B1)	PPC Aluminum framed glazing system by SCHUCO ASS 70i HI or similar
(B2)	Aluminum framed glazing system by REYNAERS - windows, doors & curtain walls
(B3)	Door or glazing by others
(C)	Glazed balustrade (light green tinted) on steel frame
(D)	PPC metal louvered sunscreen by SCHUCO or similar
(E)	PPC metal work - dark grey
(F)	Steel beam painted black
(G)	Zink insulated panels
(H)	Brick - IBSTOCK - terracotta - Atlas smooth red or equal
(I)	Retail fascia - glazing system - clear glass, aluminium frame with vent grill
(J)	Terracotta natural clay cladding tiles
(K)	Opaque glazed privacy screens
(L)	Glazed sub-station and refuse Bin Storage
(M)	Flat roof
(N)	Green/brown roof by the Landscape Architects
(O)	Signage - by others
(P)	Roof Safety railing by ICB Sustainable Roof Solutions or similar
(Q)	Green wall systems by MMA (www.jakob.co.uk)
(R)	Glazed shop front
(S)	White smooth render

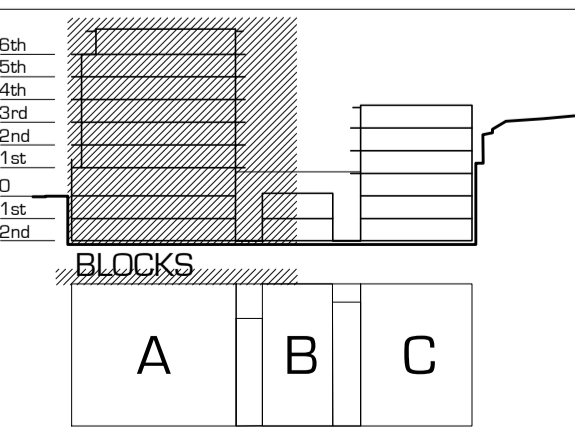


NORTH ELEVATION - BLOCK A SCALE 1:50

SIDE RETURN SCALE 1:50

General Notes:
 Report all errors, omission and discrepancies.
 Verify all dimensions on site before commencing any work on site or preparing any shop drawings.
 All materials, components and workmanship are to comply with the relevant British Standards, Codes of Practice and appropriate manufacturers' recommendations that from time to time shall apply.
 this drawing and design remains the property of SIAW and may not be reproduced in any way without prior consent.

NOTES
 FOR EXTERNAL FINISHES SEE DRAWING FR14-C39



Rev	Date	Initials	REVISION
A	17 07 2015	LS	WINDOWS TAGGING
B	03 09 2015	LS	HOLY TRINITY CHURCH AND ALBAN HOUSE ALLEYWAY
C	09 09 2015	LS	WINDOWS, P1a LAMINATION INDICATION
D	13 11 2015	LS	GLAZING FIRE RATING
E	17 02 2016	LS	CLOUR CODE FOR EXTERNAL FINISHES MATERIALS
F	18 02 2016	LS	CLOUR CODED - AOV RETURN ADDED, AREAS AND DIMENSIONS ADDED
G	15 03 2016	LS	ADDITION OF WALL BETWEEN GRID 1 AND 2
H	04 07 2016	KZ	OMISSION OF WALL BETWEEN GRID 1 AND 2
J	29 07 2016	LS	UPDATE TO EXTERNAL MATERIAL LEGEND
K	02 08 2016	LS	ALPHABET MATERIAL LEGEND ADDED

PROJECT
BRAVO HOSTEL
 120 FINCHLEY ROAD
 LONDON NW3 5HT

CLIENT
SISEM LTD

BLOCK	DISCIPLINE	STATUS
A	ARCHITECTURE	CONSTRUCT.
LEVEL	DRAWING NUMBER	REVISION
	A-FR14-C20	K
CAD FILE	XREF FILE	
JOB NO.	CI/SIB	
DRAWING TITLE	NORTH + AOV RETURN ELEVATIONS AT BLOCK A	
SCALE	DATE	DRAWN
1:50	APR 2015	SL
	CHECKED	IS

S. ILAN ARCHITECTURAL WORKSHOP

Winston House, Suite 332, 2 Dollis Park, London, N3 1HF
 T. 020 8346 0628 F. 020 8346 0635 E. info@siaw.co.uk

PROJECT TITLE **BRAVO HOSTEL 120 FINCHLEY ROAD**

GENERAL NOTE:
All doors, windows & glazing changed from Schuco to SMART System on this elevation

LEGEND - EXTERNAL MATERIALS

- BRICK
- BRICK SLIPS
- STONE CLADDING
- TERRACOTTA CLADDING
- ALUMINIUM CLADDING
- STEEL
- ZINK INSULATED PANELS
- "GREEN" WALL
- GLAZING

SCHEDULE OF EXTERNAL FINISHES	
(A)	Stone Cladding - white polished portland limestone
(B1)	PPC Aluminum framed glazing system by SCHUCCO ASS 70i HI or similar
(B2)	Aluminum framed glazing system by REYNAERS - windows, doors & curtain walls
(B3)	Door or glazing by others
(C)	Glazed balustrade (light green tinted) on steel frame
(D)	PPC metal louvered sunscreen by SCHUCO or similar
(E)	PPC metal work - dark grey
(F)	Steel beam painted black
(G)	Zink insulated panels
(H)	Brick - IBSTOCK - terracotta - Atlas smooth red or equal
(I)	Retail fascia - glazing system - clear glass, aluminium frame with vent grill
(J)	Terracotta natural clay cladding tiles
(K)	Opaque glazed privacy screens
(L)	Glazed sub-station and refuse Bin Storage
(M)	Flat roof
(N)	Green/brown roof by the Landscape Architects
(O)	Signage - by others
(P)	Roof Safety railing by ICB Sustainable Roof Solutions or similar
(Q)	Green wall systems by MMA (www.jakob.co.uk)
(R)	Glazed shop front
(S)	White smooth render

LINE OF BARKAT HOUSE

BARKAT HOUSE UNDERCROFT

BARKAT HOUSE UNDERCROFT

ROOF LEVEL
+21.75m

6 - SIXTH FLOOR
+18.75m

5 - FIFTH FLOOR
+15.75m

4 - FOURTH FLOOR
+12.75m

3 - THIRD FLOOR
+09.75m

2 - SECOND FLOOR
+06.75m

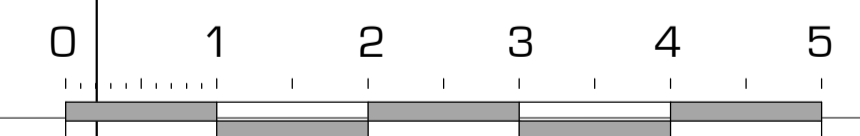
1 - FIRST FLOOR
+03.75m

0 - GROUND FLOOR
+00.00m (+52.00m)

Finchley Road

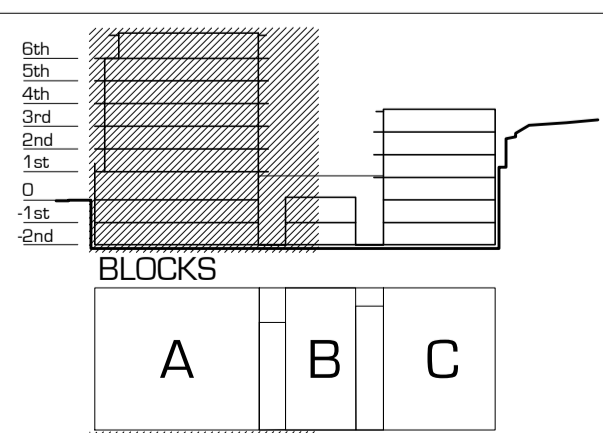
SOUTH ELEVATION SCALE 1:50

SCALE 1:50



General Notes:
Report all errors, omission and discrepancies.
Verify all dimensions on site before commencing any work on site or preparing any shop drawings.
All materials, components and workmanship are to comply with the relevant British Standards, Codes of Practice and appropriate manufacturers' recommendations that from time to time shall apply.
This drawing and design remains the property of SIAW and may not be reproduced in any way without prior consent.

NOTES
FOR EXTERNAL FINISHES SEE DRAWING FR14-C39



Rev	Date	Issue	REVISION
A	03 06 2015	LS	BOUNDARY WALL WITH BARKAT HOUSE - GLAZED PANELS
B	15 03 2016	LS	MATERIALS - COLOUR CODE
C	06 06 2016	LS	EXPANSION JOINTS POSITION
D	29 07 2016	LS	UPDATE TO EXTERNAL MATERIAL LEGEND
E	08 08 2016	LS	LETTER CODE EXTERNAL MATERIAL LEGEND ADDED BACK

PROJECT
BRAVO HOSTEL
120 FINCHLEY ROAD
LONDON NW3 5HT

CLIENT
SISEM LTD

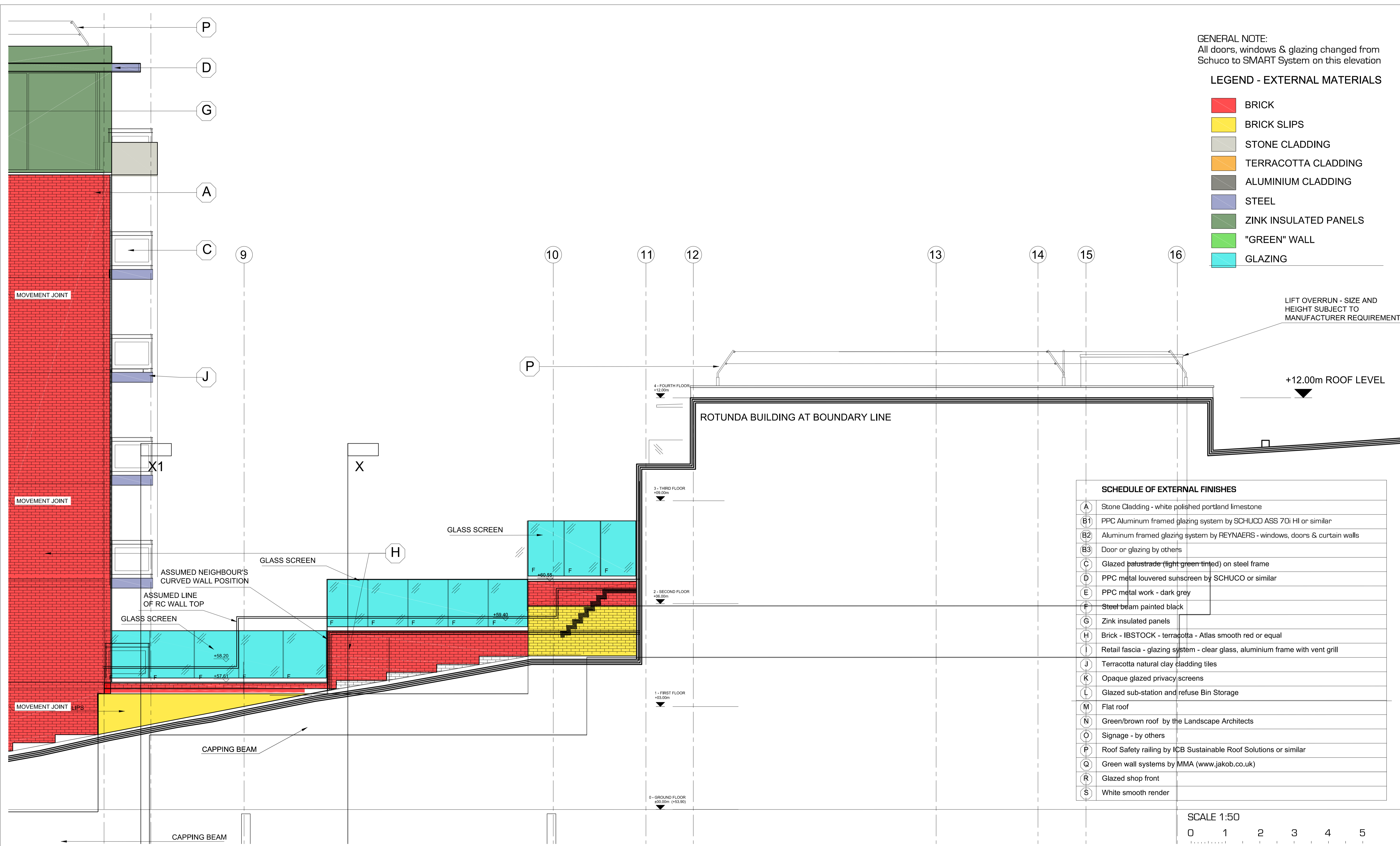
BLOCK	DISCIPLINE	STATUS
A,B	ARCHITECTURE	CONSTRUCT.
LEVEL	DRAWING NUMBER	REVISION
	A-FR14-C23	E
CAD FILE	XREF FILE	
JOB NO.	CU/SIB	
DRAWING TITLE	SOUTH ELEVATION AT BLOCK A	
SCALE	DATE	DRAWN
1:50	APR 2015	SL
		CHECKED
		IS

A1 SHEET

S. ILAN ARCHITECTURAL WORKSHOP

Winston House, Suite 332, 2 Dollis Park, London, N3 1HF
T. 020 8346 0628 F. 020 8346 0635 E. info@siaw.co.uk

PROJECT TITLE **BRAVO HOSTEL 120 FINCHLEY ROAD**

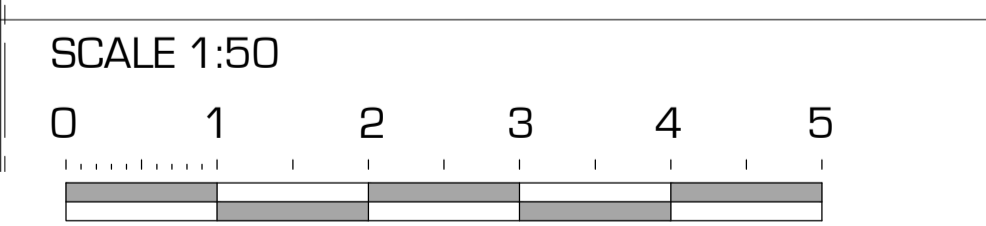


GENERAL NOTE:
All doors, windows & glazing changed from Schuco to SMART System on this elevation

LEGEND - EXTERNAL MATERIALS

- BRICK
- BRICK SLIPS
- STONE CLADDING
- TERRACOTTA CLADDING
- ALUMINIUM CLADDING
- STEEL
- ZINK INSULATED PANELS
- "GREEN" WALL
- GLAZING

SCHEDULE OF EXTERNAL FINISHES	
(A)	Stone Cladding - white polished portland limestone
(B1)	PPC Aluminum framed glazing system by SCHUCO ASS 70i HI or similar
(B2)	Aluminum framed glazing system by REYNAERS - windows, doors & curtain walls
(B3)	Door or glazing by others
(C)	Glazed palustrade (light green tinted) on steel frame
(D)	PPC metal louvered sunscreen by SCHUCO or similar
(E)	PPC metal work - dark grey
(F)	Steel beam painted black
(G)	Zink insulated panels
(H)	Brick - IBSTOCK - terracotta - Atlas smooth red or equal
(I)	Retail fascia - glazing system - clear glass, aluminium frame with vent grill
(J)	Terracotta natural clay cladding tiles
(K)	Opaque glazed privacy screens
(L)	Glazed sub-station and refuse Bin Storage
(M)	Flat roof
(N)	Green/brown roof by the Landscape Architects
(O)	Signage - by others
(P)	Roof Safety railing by ICB Sustainable Roof Solutions or similar
(Q)	Green wall systems by MMA (www.jakob.co.uk)
(R)	Glazed shop front
(S)	White smooth render



General Notes:
Report all errors, omission and discrepancies.
Verify all dimensions on site before commencing any work on site or preparing any shop drawings.
All materials, components and workmanship are to comply with the relevant British Standards, Codes of Practice and appropriate manufacturers' recommendations that from time to time shall apply.
This drawing and design remains the property of SIAW and may not be reproduced in any way without prior consent.

NOTES
FOR EXTERNAL FINISHES SEE DRAWING FR14-C39

Rev	Date	Initials	REVISION
A	03 06 2015	LS	BOUNDARY WALL WITH BARKAT HOUSE - GLAZED PANELS
B	15 03 2016	LS	MATERIALS - COLOUR CODE
C	29 07 2016	LS	UPDATE TO EXTERNAL MATERIAL LEGEND
D	08 08 2016	LS	LETTER CODE EXTERNAL MATERIAL LEGEND ADDED BACK

Rev	Date	Initials	REVISION
A	03 06 2015	LS	BOUNDARY WALL WITH BARKAT HOUSE - GLAZED PANELS
B	15 03 2016	LS	MATERIALS - COLOUR CODE
C	29 07 2016	LS	UPDATE TO EXTERNAL MATERIAL LEGEND
D	08 08 2016	LS	LETTER CODE EXTERNAL MATERIAL LEGEND ADDED BACK

PROJECT
BRAVO HOSTEL
120 FINCHLEY ROAD
LONDON NW3 5HT

CLIENT
SISEM LTD

BLOCK	DISCIPLINE	STATUS
B, C	ARCHITECTURE	CONSTRUCT.
LEVEL	DRAWING NUMBER	REVISION
	A-FR14-C24	D
CAD FILE	XREF FILE	
JOB NO.	CU/SIB	
DRAWING TITLE	SOUTH ELEVATION BLOCK B & C	
SCALE	DATE	DRAWN
1:50	APR 2015	SL
CHECKED	IS	

S. ILAN ARCHITECTURAL WORKSHOP

Winston House, Suite 332, 2 Dollis Park, London, N3 1HF
T. 020 8346 0628 F. 020 8346 0635 E. info@siaw.co.uk

PROJECT TITLE **BRAVO HOSTEL 120 FINCHLEY ROAD**