

NOTES FOR THE APPLICATION OF LIME PLASTER ON WOODEN LATHS

Preparation

50mm Riven Chestnut laths at 6mm spacing fixed to timber studs using galvanised lath nails. Spray a mist of cold water on the lath before applying the scratch coat.

First Coat of Lime Plaster.

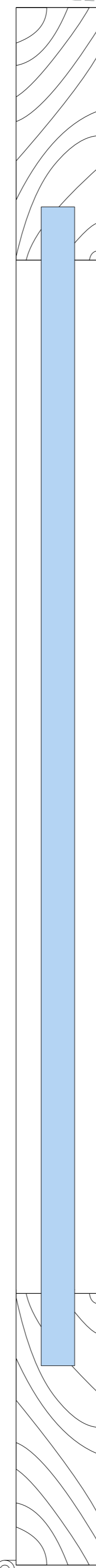
Using a ratio of 1 part Lime putty to 2 & 1/2 to 3 parts sharp washed sand with evenly distributed horse hair throughout the mortar and working to a layer of 10mm thick pushed into and across pre wet laths at a 45° degree angle to the laths. Allow the plaster to set to set hard protecting from heat and draughts.

Second Coat of Lime Plaster.

Using the same ratio as before but without horse hair apply the float coat wetting the base coat with a fine mist prior to applying plaster to a thickness of 7mm. Scratch the surface and leave to set in preparation for the finish coat.

Finish Coat of Lime Plaster.

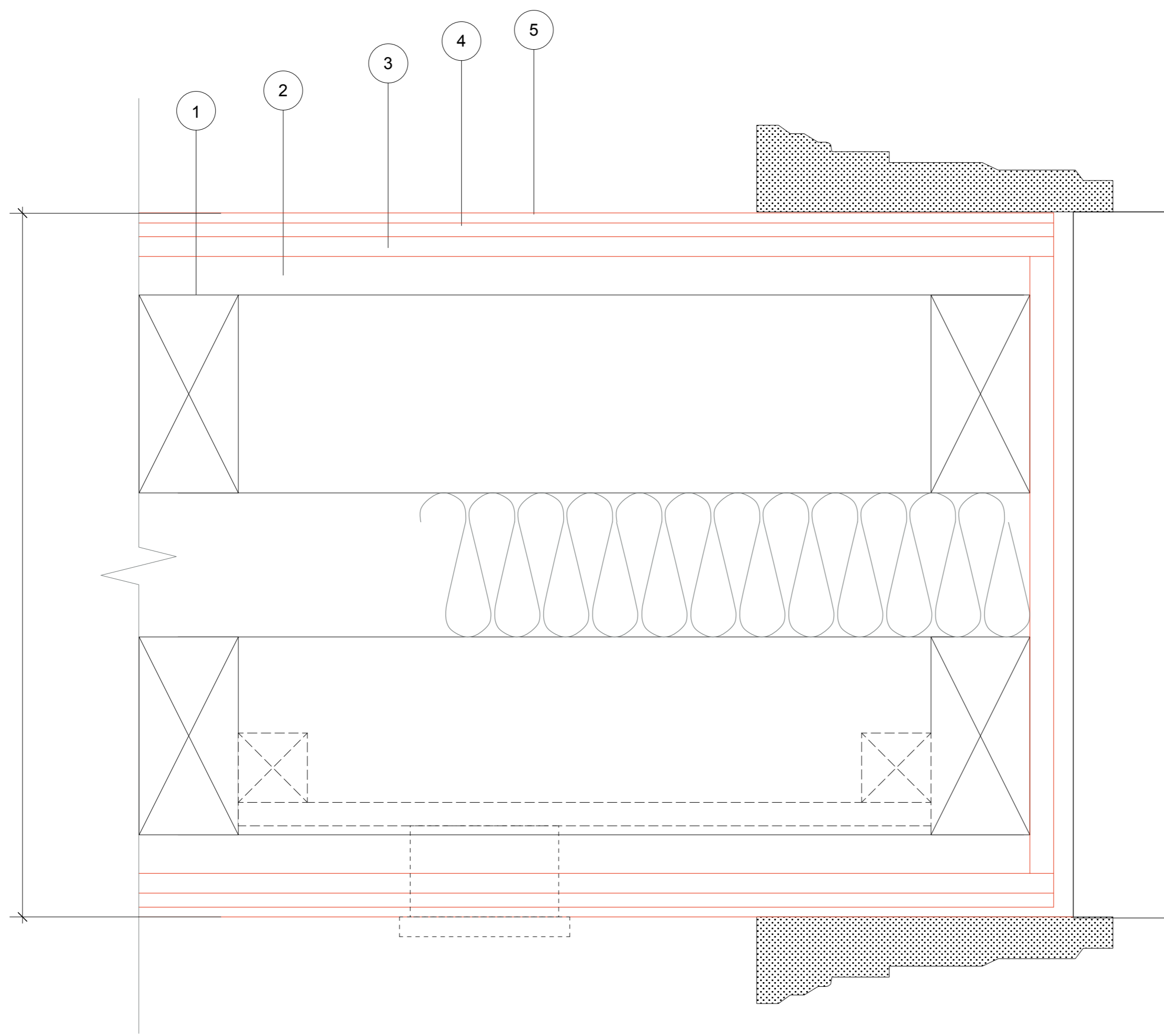
For the final coat use a fine mix of 1 part Lime putty to 2 parts well graded super fine sand. Wet down the surface before application with a fine mist spray allowing time for the water to absorb into the plaster then apply the top coat of approximately 5mm. Rule off and leave for a few hours. When ready rub up the finish coat using a plastic or wooden trowel to bring back the fat until the required finish has been reached. Light crazing can be rubbed up and trowelled out.



Notes

1. Timber stud partition
2. 50mm Riven Chestnut laths at 6mm spacing fixed to timber studs using galvanised lath nails.
3. 10mm 1st coat of Lime plaster
1 part lime putty to 2 1/2 parts of sharp washed sand with horse hair.
4. 7mm 2nd coat of Lime plaster
1 part lime putty to 2 1/2 parts of sharp washed sand without horse hair. Scratch coat.
5. 5mm top coat of Lime plaster
1 part lime putty to 2 parts of fine sand.

Partition width and stud widths vary subject to wall thickness and original door linings. to be co-ordinated with specialist joinery sub-contractor



Door lining

Architrave

Recessed electrical backbox locally fixed on plywood patresses. Conduits to be recessed into the thickness of the plaster finishes.

PLANNING AND LISTED BLDG CONSENT SUBMISSION

NB: Final details of all interior elements and specifications are subject to review by client's consultant historians and may be subject to subsequent design development

A1 1:2 @ A1
1:4 @ A3

1:2 TYPICAL PARTITION DETAIL - 2

 13, Needham Road, London, W11 2BP Tel: 020 7229 9375 Fax: 020 7221 4172	DRAWING TYPICAL PARTITION DETAIL -2	DRWG. N°. 492/sk-02
	PROJECT THE ELMS, FITZROY PARK, N6 6HS	Rev. B
	CLIENT ELM INTERNATIONAL LTD	Scale 1:2 @ A1
		Date Nov 2016

DO NOT SCALE FROM THIS DRAWING. ALL DIMENSIONS TO BE CHECKED ON SITE AND DISCREPANCIES REPORTED TO ARCHITECT