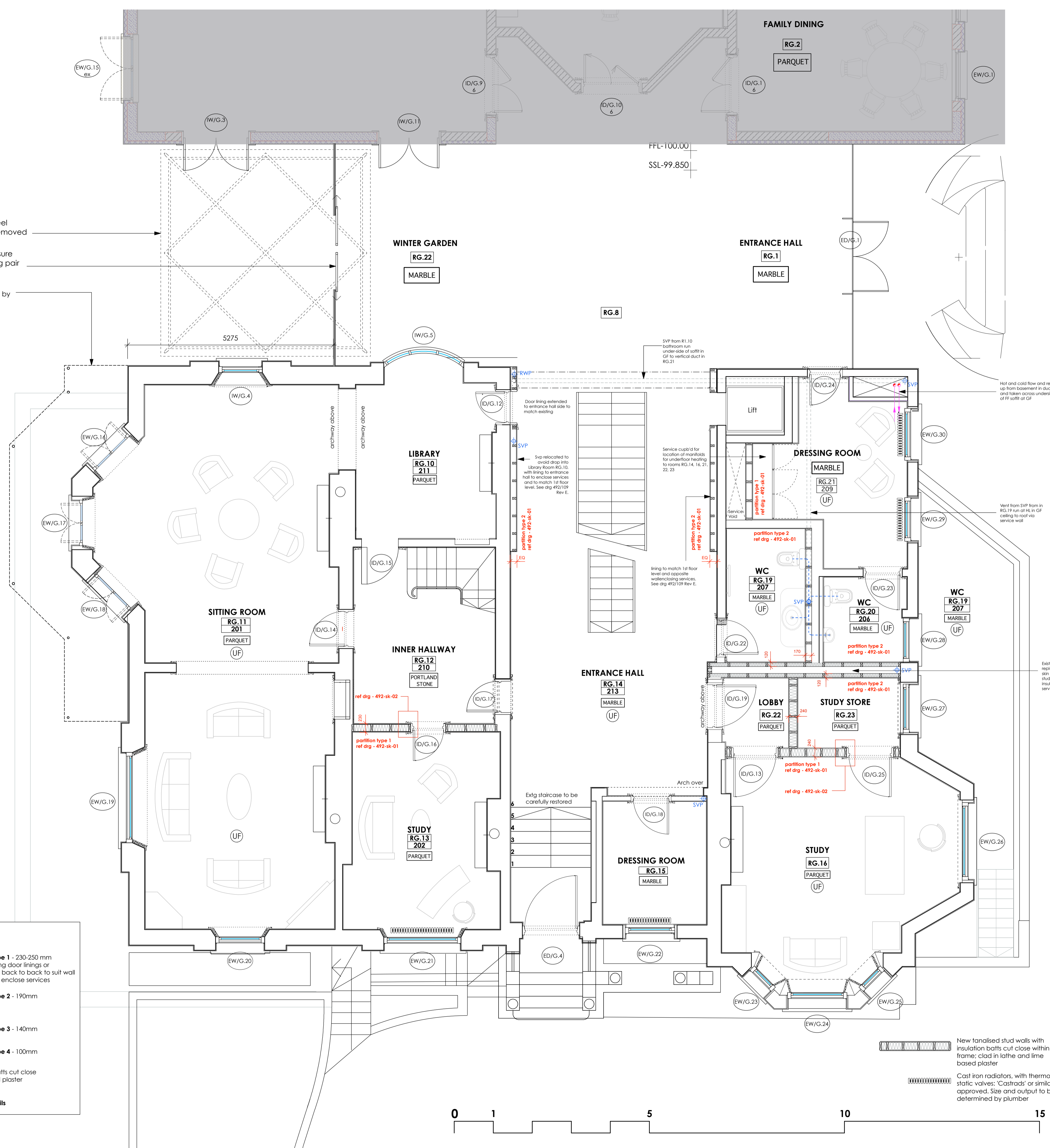


Cupola and supporting steel structure and downpipe removed

New structural glass enclosure onto garden, incorporating pair of sliding doors

Metal canopy to be restored by specialist metal conservator



**Partition Wall Type Key**

	<b>Partition Type 1</b> - 230-250 mm to suit existing door linings or single side / back to back to suit wall thickness or enclose services
	<b>Partition Type 2</b> - 190mm
	<b>Partition Type 3</b> - 140mm
	<b>Partition Type 4</b> - 100mm

New tanalised stud walls with insulation batts cut close within frame; clad in lathe and lime based plaster

Refer to drg 492-sk-01, 02 & 03 for further details

**PLANNING AND LISTED BLDG CONSENT SUBMISSION**

NB: Final details of all interior elements and specifications are subject to review by client's consultant historians and may be subject to subsequent design development

**A1** 1:50@ A1  
1:100 @ A3

**NOTE:** For full details of all pipe runs, drainage runs, cable management and mechanical ventilation refer to mechanical and electrical sub-contractors drawings

**Rev D:** March 2017 - Consented drawings with Partition wall types added and cross referenced to drg 492-sk-01

**Rev C:** December 2016 - Partition types added, svp adjacent to RG.10 relocated and new wall linings added to entrance hall.

**Rev B:** August 2013 - Planning and Listed Bidg Consent Submission

**Rev A:** April 2013 - Notes added re removal of cupola; pre-application submission no. 2

	<b>DRAWING</b>	<b>LISTED BUILDING - GROUND FLOOR PLAN</b>	<b>DRWG. N°</b>	492/107
	<b>PROJECT</b>	THE ELMS FITZROY PARK LONDON N6 6HS	<b>Rev.</b>	<b>D</b>
<small>Alan Power Architects Ltd 13 Northam Road London, W11 3RP Tel: 020 7229 9375 Fax: 020 7221 4172</small>	<b>CLIENT</b>	ELM INTERNATIONAL Ltd.	<b>Scale</b>	1:50 @ A1
			<b>Date</b>	Jan. 2012
			<b>Drawn</b>	

DO NOT SCALE FROM THIS DRAWING. ALL DIMENSIONS TO BE CHECKED ON SITE AND DISCREPANCIES REPORTED TO ARCHITECT