

Camden Development Policies 2010-2025

Local Development Framework



**If you would like this document in large print
or Braille, or in another language, please
contact 020 7974 5615**

Find out more about this document and the LDF by visiting camden.gov.uk/ldf
or by calling the LDF hotline 020 7974 5615/2043.

Forward Planning
London Borough of Camden
Town Hall Extension
Argyle Street
London WC1H 8EQ

Published November 2010.

Camden's Local Development Framework. Development Policies.



Section 1

Location and management of Camden's growth

- 1.1 It is estimated that Camden's population will increase by around 36,000 people (about 18%) between 2006 and 2026. This growth in population will be accompanied by an increase in the number of homes, offices and other land uses in the borough. As Camden is already highly built up and has many places that are highly valued by local people, we face specific challenges in how to adapt to our growing population while improving and protecting our environment and how to get the right developments in the right places.
- 1.2 *A sustainable Camden that adapts to a growing population* is one of the key themes in Camden Together - Camden's Community Strategy. Our Local Development Framework documents form one of the main mechanisms for achieving this. The Core Strategy sets out our overall strategy in relation to growth, where it happens and how it is managed (see paragraphs 16-19 above).
- 1.3 Camden Development Policies provides detailed planning policies to help implement our Core Strategy. The Core Strategy section on the *Location and Management of Camden's Growth* sets out our overall approach to where growth will happen and how we can make sure it works positively for the borough. Many of the policies in this document contribute to delivering elements of the policy approach in the *Location and Management of Camden's Growth* section of the Core Strategy. However, as this is predominately a strategic matter, there is only one issue – mixed use – for which we consider a detailed development policy is needed under the *Location and Management of Camden's Growth* theme.



DP1. Mixed use development

- 1.4 Core Strategy policy CS1 – *Distribution of growth* promotes the most efficient use of land and buildings in Camden. This includes encouraging a mix of uses in development and expecting the provision of a mix of uses in schemes in the most accessible parts of the borough. Policy DP1 helps to deliver this by setting out our detailed approach to mixed use development.
- 1.5 The Council assesses mixed-use schemes in terms of the ‘primary’ use, which is the largest land-use by floorspace, and ‘secondary’ uses, which are all uses with smaller floorspaces. Where a contribution to housing is sought, this refers to self-contained housing (Use Class C3), except in the case referred to in paragraph 1.9. For the purposes of comparing the non-residential and housing floorspace, the Council will use the gross external area.
- 1.6 Policy DP1 is a relevant consideration for all new build development and extensions involving a significant floorspace increase. No non-residential uses are excluded from the policy. However, we acknowledge that there are a number of circumstances where a mix of uses may not be sought.

DP POLICY

DP1 – Mixed use development

The Council will require a mix of uses in development where appropriate in all parts of the borough, including a contribution towards the supply of housing. In the Central London Area (except Hatton Garden) and the town centres of Camden Town, Finchley Road/ Swiss Cottage and Kilburn High Road, where more than 200 sq m (gross) additional floorspace is provided, we will require up to 50% of all additional floorspace to be housing.

As an exception to this approach, in the designated Hatton Garden area, where more than 200 sq m (gross) additional floorspace is provided, we will require up to 50% of all additional floorspace in the form of secondary uses, including a contribution to housing and a contribution to affordable premises suitable for the jewellery industry.

The Council will require any secondary uses to be provided on site, particularly where 1,000sqm (gross) of additional floorspace or more is proposed. Where inclusion of a secondary use is appropriate for the area and cannot practically be achieved on the site, the Council may accept a contribution to the mix of uses elsewhere in the area, or exceptionally a payment-in-lieu.

In considering whether a mix of uses should be sought, whether it can practically be achieved on the site, the most appropriate mix of uses, and the scale and nature of any contribution to the supply of housing and other secondary uses, the Council will take into account:

- a) the character of the development, the site and the area;
- b) site size, the extent of the additional floorspace, and constraints on including a mix of uses;
- c) the need for an active street frontage and natural surveillance;
- d) the economics and financial viability of the development including any particular costs associated with it;
- e) whether the sole or primary use proposed is housing;
- g) whether secondary uses would be incompatible with the character of the primary use;
- f) whether an extension to the gross floorspace is needed for an existing user;
- h) whether the development is publicly funded;
- i) any other planning objectives considered to be a priority for the site.

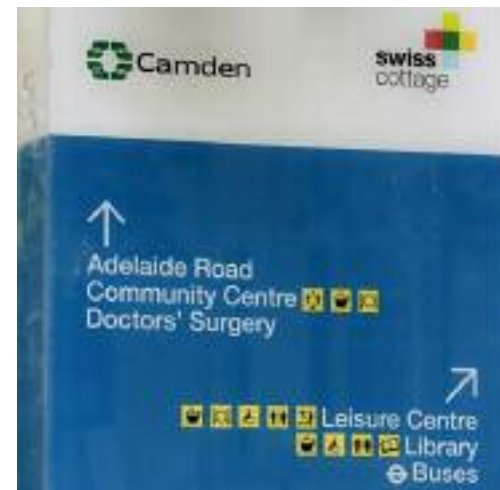
- 1.7 If we are going to adapt successfully to Camden’s growing population, we need to make the best use of the borough’s limited land. Developing a mix of uses on individual sites and across an area can be beneficial in a number of ways, such as:
- reducing the need to travel between homes, jobs and services;
 - providing a range of activities through the day, and so increasing community safety and security;
 - contributing to the creation of areas that are diverse, distinctive and successful;
 - allowing an efficient use of land, with other uses developed above those uses which need direct ground floor access or a street-level frontage, such as shops;
 - providing more opportunities for the development of housing.

Large parts of the borough have a well-established mixed-use character and the Council seeks to extend this.

- 1.8 Core strategy policy CS6 indicates that the Council will regard housing as the priority land use of the Local Development Framework. Core strategy paragraph 6.18 goes on to acknowledge that the priority given to housing does not override a number of other considerations, but will be considered alongside them, such as the need for jobs, services and facilities, and the importance of Central London as a focus of business, shopping, education, healthcare and research. Taking into account these considerations, the Council will consider whether a proposed development in the borough could appropriately include a mix of uses, and in appropriate cases will seek a contribution to the supply of housing. Other secondary uses that may be sought include shops, community facilities, open space and workshops for light industry. The need for secondary uses and the precise mix and proportion appropriate will vary in different locations and will be a matter for negotiation, taking into account all the criteria set out in policy DP1.
- 1.9 As noted in Core Strategy paragraphs 6.13 and 6.53, the Council is concerned that the provision of student housing and other housing with bedsit rooms and shared facilities could prejudice the supply of self-contained housing. Therefore, when applying policy DP1 to seek a contribution to the supply of housing, the Council will seek permanent self-contained housing (in Use Class C3). However, in the context of development for an educational institution supported by the Higher Education Funding Council for England, as an alternative to self-contained housing, the Council may accept student housing that serves the same institution.



- 1.10 Camden’s Central London Area and the town centres of Camden Town, Swiss Cottage/Finchley Road and Kilburn High Road are the parts of the borough which have the best access to public transport, the best potential for a mix of uses, and the best prospect for the development of housing above active street frontages. Additional housing in these locations will help provide activity and surveillance when businesses are closed, and support shops, services and local facilities. Therefore, the Council will expect development schemes in Central London and our larger town centres to provide a mix of uses, and will seek to negotiate up to half of all additional floorspace as housing (in Use Class C3), such that additional floorspace in residential use matches all the additional floorspace in non-residential uses.
- 1.11 On the basis of the floorspace and ancillary space required to create a single self-contained home or a single commercial unit within a mixed-use development, the Council considers that a development adding more than 200 sq m (gross) of floorspace is sufficient to provide a mix of uses, including a contribution to the supply of housing. Housing provided as part of a mixed use scheme should be independent of other uses and have a separate access at street level or other arrangements which provide for occupation independent of any non-residential use.
- 1.12 Affordable housing will be sought in appropriate circumstances in line with Core Strategy policy CS6 – *Providing quality homes* and Policy DP3 – *Contributions to the supply of affordable housing*. For example, where a development adds 1,000 sq m of non-residential floorspace, up to 1,000 sq m of housing will be sought. If 1,000 sq m or more of housing is provided, then within this, a contribution will be sought to affordable housing in accordance with paragraph 3.8 under policy DP3. As indicated in paragraph 3.18, the Council's sliding scale approach to affordable housing contributions from sites with capacity for 10 to 50 dwellings will not apply to mixed-use developments providing 1,000 sq m of non-residential floorspace or more. Where a site provides less than 1,000 sq m of non-residential floorspace, but is expected to make a contribution to the supply of affordable housing under the provisions of policy DP3, housing will be the primary use, and the sliding scale approach will apply to the affordable housing contribution.
- 1.13 The designated Hatton Garden area has a special character due to its nationally and internationally important cluster of jewellery manufacture and trading. The Council seeks to preserve and enhance the special character of the Hatton Garden, and to secure and protect a stock of premises available for small jewellery workshops and related light industry. We will seek to balance the general priority for housing against the importance of workshops in the Hatton Garden area, and will seek contributions to both of these where the inclusion of secondary uses is appropriate. The precise mix between primary and secondary uses, and between housing and jewellery premises, will vary in different developments and will be a matter for negotiation, taking into account the criteria in policy DP1. Core Strategy policy CS8 and policy DP13 give more information regarding our approach to Hatton Garden.



- 1.14 The adoption of a mixed use approach means that there will inevitably be occasions when new business development adjoins new or existing residential accommodation. By definition, business uses within Use Class B1 should be capable of operating in residential areas without having an adverse impact on residential amenity. The Council is concerned, however, that in some instances noisy plant and extended hours of operation can have a harmful effect on amenity. When mixed use schemes are proposed, we will therefore secure appropriate design features and use planning conditions to protect the amenity of existing and future residents.

Off-site provision and payments in lieu

- 1.15 Inclusion of secondary uses as part of a mixed use development offers the best prospect for creating a complementary range of activities across an area with continuous activity and natural surveillance. However, where a secondary use is appropriate for the area and cannot practically be achieved on the site, the Council may accept an off-site contribution to secondary uses in the same area, directly related in scale and kind to the development proposed, and secured by means of a planning obligation. Off-site solutions may be appropriate where developments involve a relatively small addition to floorspace, but it is anticipated that development adding 1,000 sq m (gross) or more should provide for mixed use on-site unless the applicant provides clear evidence that off-site provision of secondary uses is more appropriate.
- 1.16 In the Central London Area (excluding Hatton Garden) and the specified town centres, if an off-site contribution to housing is appropriate, the Council will take into account all related sites when assessing the level of housing provided. The Council will seek additional housing floorspace to match the net addition to non-residential floorspace across all sites, taking into account any non-residential floorspace removed in conjunction with the off-site housing contribution (but also seeking replacement of any existing housing lost as part of each development). For example, an additional 800 sqm of non-residential development without on-site secondary uses could either be matched off-site by the addition of 800 sq m of housing floorspace (with no reduction of existing non-residential floorspace), or matched by the conversion or redevelopment of 400 sq m of non-residential space into 400 sq m of housing.
- 1.17 Exceptionally, where a secondary use is appropriate for the area but cannot be achieved on site, and it is demonstrated to the Council's satisfaction that no alternative site is available in the area for the secondary use, we may accept a payment in lieu of provision, directly related in scale and kind to the development proposed. Financial contributions will relate to the value of the land (or the value of the space above another development) needed to provide the secondary use elsewhere, having regard to the financial viability of the proposed development. More detailed information regarding the calculation of off-site provision and payments in lieu is provided in our Camden Planning Guidance supplementary document.
- 1.18 The Council will adopt a similar approach to off-site contributions and payments-in-lieu in the Hatton Garden area, except that the scale of the contribution sought to housing may be reduced in order to secure a contribution to affordable premises or other support for the jewellery industry – see policy DP13 and the accompanying paragraphs.

Other factors affecting the potential for mixed-use development, and the scale, nature and location of secondary uses

- 1.19 **The character of the development, the site and the area, site size, and the extent of the additional floorspace** – Existing development on or near a development site may limit the potential for the inclusion of secondary uses, particularly the inclusion of housing. A site may be constrained by disturbance or overlooking from other activities and properties nearby. The retention and extension of an existing building on-site (especially a listed building or a building that makes a positive contribution to a conservation area) may prevent the creation of new features such as entrances, windows, staircases and lifts necessary to accommodate a mix of uses. Small site sizes may also limit the potential to include these features. As noted in paragraph 1.15, it may be appropriate for developments involving a relatively small addition to floorspace (under 1,000 sq m gross) to make an off-site contribution to secondary uses.

- 1.20 **The need for an active street frontage and natural surveillance** – Particular secondary uses and arrangements of uses may be sought to promote street activity and natural surveillance where community safety concerns are raised by local characteristics, such as:
- long, unpunctuated street blocks and frontages formed by large buildings;
 - a lack of diversity and domination of the area by a single use;
 - a lack of vitality and a high proportion of vacant premises;
 - low levels of street activity at certain times of the day, evening or week.
- 1.21 **Development economics, financial viability, and particular costs** – We acknowledge that the introduction of secondary uses into a development can have a major impact on development economics in a variety of ways, including the need for additional circulation spaces and stairways, lower rents or capital values associated with some secondary uses, the effect of differential lease periods on future prospects for redevelopment, and investor preferences. Where a proposed development falls significantly short of the Council's expectations in terms of the contribution to secondary uses (whether on-site, off-site, or in the form of a payment-in-lieu), the Council will expect submission of a financial viability appraisal to justify the scale of the secondary uses proposed. In appropriate circumstances, the Council may also seek an independent verification of the appraisal funded by a developer. Further details of how we will consider financial viability in connection with policy DP1 are provided in our Camden Planning Guidance supplementary document.
- 1.22 We also acknowledge that emerging economic conditions and property market trends may alter the viability of the primary or secondary uses, potentially delaying or preventing implementation of some or all parts of a proposal. The Council will take into account the sensitivity of financial viability appraisals to changing market circumstances, and will seek to include appropriate flexibility into planning obligations and phasing arrangements to ensure that a mix of uses can be delivered.
- 1.23 **Specific situations when mixed use development may not be required** – In addition to the general considerations that may limit the potential or scale for the development of a mix of uses or a contribution to secondary uses, there are a number specific types of development and circumstances that could render the inclusion of secondary uses inappropriate:
- given that housing is the priority land-use of the Local Development Framework, where housing is the sole or primary use proposed, the Council may not seek secondary uses unless there is a shortfall of facilities in the area that will be needed for the development (for example, open space or health facilities), or secondary uses are needed to provide an active street frontage (for example, shops in or adjacent to a shopping parade);
 - the Council will not seek housing or other secondary uses where they are not compatible with the primary use, for example where noise levels from an industrial use would compromise residential amenity, or where the incorporation of secondary uses would be precluded by the operational requirements of a specialised use, such as a hospital or healthcare facility, or an academic, research or educational institution;
 - the Council may not seek secondary uses where a development is required to accommodate an existing user on the site (for example, to provide for the expansion of a business or to consolidate a business's activities to a single site), unless the development involves additional floorspace that is surplus to the user's requirements;
 - The Council may not seek secondary uses where a development is publicly funded and is required to accommodate a public facility or service, or for public administration.
- 1.24 **Any other planning objectives considered to be a priority for the site** – The Council recognises that where it seeks other planning benefits from a development or seeks to meet other planning objectives, this may limit the potential of a site to provide a mix of uses generally, or housing in particular. Examples may include the requirement to contribute to funding for transport infrastructure, or the need to prioritise uses such as business, shopping, education, healthcare or research in certain parts of Central London. When negotiating for a contribution to secondary uses, the Council will have regard to other benefits arising from a proposal. The Council will expect costs associated with all aspects of a proposal to be included in any financial viability appraisal, including the costs and returns associated with all uses included in the development, and any expenditure required to meet the terms of a legal agreement.

Further guidance

- 1.25 Further guidance on mixed use developments, particularly in relation to the inclusion of a proportion of housing in such schemes, is set out in our Camden Planning Guidance supplementary document. The Council's Site Allocations document will allocate specific sites for a mix of uses and provide guidance for their future development.

Key evidence and references

- Camden Housing Needs Study Update 2008
- The London Plan (consolidated with Alterations since 2004); Mayor of London; 2008
- Planning Policy Statement (PPS) 1: Delivering Sustainable Development; ODPM; 2005





Section 2

Meeting Camden's needs – Providing homes, jobs and facilities

2.1 The section on Meeting Camden's needs in Camden's Core Strategy provides our overall approach to making sure we provide the homes, jobs, facilities and infrastructure needed to support the growth in the number of people living in, working in and visiting the borough. This section of Camden Development Policies sets out our detailed planning policies to help to implement this part of the Core Strategy. It is divided into three parts:

- **Meeting our need for homes** – this provides policies that seek to maximise overall housing supply, provide affordable housing and prevent the loss of housing. It also covers providing homes of different sizes; lifetime and wheelchair homes; sheltered housing and care homes for older people; accommodation for homeless people and vulnerable people; hostels and other housing with shared facilities.
- **Providing jobs and facilities** – this contains our policies on small and independent shops, markets, managing the impact of town centre uses, employment sites and premises, tourism and visitor accommodation, and community and leisure uses.
- **Promoting sustainable and efficient transport** – this sets out our detailed policies on transport, in particular on the transport implications of development; walking, cycling and public transport; parking; the movement of goods; and development that connects to the highway network.



Meeting our need for homes

- 2.2 The Core Strategy seeks to manage growth so that it works positively for Camden. Core Strategy policy CS6 – *Providing quality homes* aims to:
- make full use of Camden’s capacity for housing, to meet or exceed targets for the supply of homes in the borough;
 - secure high quality affordable housing, by seeking an appropriate proportion of, and different types of, affordable homes; regenerating Camden’s housing estates; and bringing existing Council homes up to Decent Homes standard;
 - minimise social polarisation and secure mixed and inclusive communities, by securing a broad range of housing of different sizes and types to meet the needs of different groups and households in different circumstances.
- 2.3 This sub-section of Camden Development Policies sets out in more detail how we will make planning decisions to deliver the aims of policy CS6. However, housing schemes will also need to satisfy other relevant policies, particularly those concerned with the environment, quality of life, sustainability, climate change and transport. These policy concerns correspond well with the Building for Life criteria that form the national standard for well-designed homes and neighbourhoods.
- 2.4 Amenity, in terms of a house’s relationship with neighbouring properties and its internal space standards, is key aspect of housing quality. The Council will protect the amenity of Camden’s residents by making sure that the impact of developments on their occupiers and neighbours is fully considered, in accordance with development policy DP26 and Core Strategy policy CS5. Further information regarding factors that affect residential amenity is included in our Camden Planning Guidance supplementary planning document. In particular, Camden Planning Guidance contains our internal space standards for residential development. To provide high quality housing, proposals will need to address all aspects of residential amenity in accordance with relevant policies and Camden Planning Guidance.
- 2.5 The policies in this sub-section relate to the same forms of housing as Core Strategy policy CS6, namely:
- self-contained houses and flats (Use Class C3) (the predominant form);
 - live/work units, which are self-contained homes that include a dedicated work area (they are outside any planning use class, but we will treat them in the same way as Use Class C3 for the operation of our Local Development Framework policies);
 - bedsit rooms that share facilities such as toilets, bathrooms and kitchens (often known as houses in multiple occupation or HMOs, some with 3 to 6 occupiers fall within Use Class C4, but most are outside any planning use class);
 - hostels where shared accommodation is managed for a particular group of people (e.g. students) and occupiers may stay for several months (also outside any planning use class);
 - those nursing homes, care homes and parts of hospitals where people live permanently, such as nurses’ accommodation (parts of Use Class C2);
 - residential accommodation that is ancillary to another use, such as living areas for managers, caretakers and other staff.

DP2. Making full use of Camden’s capacity for housing

- 2.6 Core Strategy policy CS6 indicates that the Council seeks to maximise the supply of homes and minimise their loss, with housing regarded as the priority land-use of the Camden Local Development Framework. Key aspects of policy CS6 that inform our approach to maximising housing supply and minimising loss of homes in the case of an individual site include:
- the overall Camden target for supply of additional homes from 2010/11 to 2024/25;
 - the separate elements of the target for self-contained homes, homes that are not self-contained (such as hostels and grouped bedsit rooms) and vacant homes returning to use;
 - the overall expected delivery of additional homes based on Camden’s 15-year housing trajectory, which is significantly above the housing target for 2010/11 to 2024/25, but falls significantly short of the projected household growth rate up to 2026; and
 - the Council’s aim to give priority to households unable to access market housing and to vulnerable people in planning decisions relating to new homes.
- 2.7 Policy DP2 protects housing against development for a non-residential use. It relates to all forms of housing for long-term residents (see paragraph 2.5). The first part of the policy is concerned with making the best use of sites for additional homes, particularly homes for people who are unable to access general needs market housing. This part relates primarily to self-contained houses and flats (Use Class C3). The second part is concerned with the loss of housing floorspace in all forms; proposals to change permanent housing into short-stay accommodation; and with the loss of self-contained homes through proposals to combine them into larger dwellings. More detailed guidance is given in policies DP7, DP8 and DP9 with respect to the loss of sheltered housing and care homes for older people; loss of housing for vulnerable people and homeless people; and loss of student housing, bedsits, and other housing with shared facilities. Through policy DP4, the Council seeks to protect existing affordable housing, whether or not it is self contained.



DP POLICY

DP2 – Making full use of Camden’s capacity for housing

The Council will seek to maximise the supply of additional homes in the borough, especially homes for people unable to access market housing, by:

- a) expecting the maximum appropriate contribution to supply of housing on sites that are underused or vacant, taking into account any other uses that are needed on the site;
- b) resisting alternative development of sites considered particularly suitable for housing; and
- c) resisting alternative development of sites or parts of sites considered particularly suitable for affordable housing, homes for older people or homes for vulnerable people.

The Council will seek to minimise the loss of housing in the borough by:

- d) protecting residential uses from development that would involve a net loss of residential floorspace, including any residential floorspace provided:
 - within hostels or other housing with shared facilities; or
 - as an ancillary element of another use, wherever the development involves changing the main use or separating the housing floorspace from the main use.

- e) protecting permanent housing from conversion to short-stay accommodation intended for occupation for periods of less than 90 days;
- f) resisting developments that would involve the net loss of two or more homes, unless they:
 - create large homes in a part of the borough with a relatively low proportion of large dwellings,
 - enable sub-standard units to be enlarged to meet residential space standards, or
 - enable existing affordable homes to be adapted to provide the affordable dwelling-sizes that are most needed.

As an exception to the general protection of residential floorspace, where no alternative site is available, the Council will favourably consider development that necessitates a limited loss of residential floorspace in order to provide small-scale healthcare practices meeting local needs.





Maximising the supply of additional homes

- 2.8 Housing is regarded as the priority land-use of the Local Development Framework, and the Council will make housing its top priority when considering the future of unused and underused land and buildings (see Core Strategy policy CS6). However, this priority does not override, but will be considered alongside, the need to protect some non-residential uses; to promote the national and international roles of Central London; and the need for development to respect the characteristics of the area and the site or property. Taking these considerations into account, a mix of uses or an alternative use will be appropriate for some sites. Where a mixed-use scheme including housing would be appropriate, the Council will seek to maximise the contribution to the supply of housing within the mix, taking into account policy DP1 and the criteria set out in paragraph 2.12.
- 2.9 High development densities are one way of making the maximum use of a site (in the context of housing, this means more homes or rooms in a given area). In accordance with policy CS1 of the Camden Core Strategy, the Council will expect the density of housing development to take account of the density matrix in the London Plan (Table 3A.2), and to be towards the higher end of the appropriate density range. However, the appropriate density will also depend on accessibility, the character and built form of the surroundings, and protecting the amenity of occupiers and neighbours. Given that the majority of the borough has relatively high public transport accessibility and is suitable for development of flats, densities should generally fall within the cells towards the right and bottom of the matrix, i.e. 45 to 405 dwellings per hectare.
- 2.10 There is a significant market in Camden for very large homes that have many more rooms than occupiers. The London Plan density matrix assumes that the number of habitable rooms per dwelling will average between 2.7 and 4.6. Developments including dwellings with significantly more habitable rooms may give inconsistent results against the density matrix, showing an appropriate density in terms of habitable rooms, but an inappropriately low density in terms of dwellings. In the interests of mixed and inclusive communities, the Council seeks a range of dwelling sizes, and does not favour concentrations of very large homes. Therefore, when using the London Plan density matrix, the Council will refer primarily to dwelling densities, measured in units per hectare.



- 2.11 Where possible, we have identified underused sites that are suitable for additional housing in our Site Allocations Local Development Framework document, and will resist an alternative use of allocated sites. However, a high proportion of the housing developments that come forward in Camden are not identified in advance because they are small sites, or were in use when sites were assessed for allocation. Given the high proportion of potential housing sites in the borough that cannot be identified in the Sites Allocations document, the Council may also resist non-housing development on other sites that:
- have a valid consent for housing; or
 - are suitable for housing in terms accessibility and amenity, and are free of physical and environmental constraints that would prevent residential use.
- 2.12 In seeking to maximise the proportion of a site used for housing and deciding whether to resist a non-housing development, the Council will take into account:
- the need and potential to re-provide on site existing uses protected by other policies, such as industry, warehousing, community uses and shops;
 - other uses that are needed in the area, particularly in Central London, and the extent to which alternative sites or provision is available;
 - policy DP1, and whether a mixed-use development would be appropriate;
 - whether the supply of additional housing falls short of the overall target of 595 additional homes per year and the target of 437 additional self-contained homes per year; and
 - the financial viability of the proposal and the financial viability of housing development.
- 2.13 The Council will generally treat live/work units in the same way as housing for the operation of development policies. Such premises contribute to the range of homes and the range of business premises in the borough, and the Council will not resist the development of live – work premises on sites that are considered suitable for housing, subject to the inclusion of an appropriate mix of dwelling-sizes and types (in accordance with other policies including DP3, DP5 and DP6). Further information on our approach to live-work premises is provided by policy DP13 and accompanying paragraphs.

Sites particularly suitable for affordable housing and housing for vulnerable people

- 2.14 The capital return and rental income of developments that provides affordable housing, housing for older people or housing for vulnerable people is limited. Therefore there is a danger that other more profitable forms of housing, such as student housing, will take-up potential sites and limit the supply of affordable housing and homes for vulnerable people.
- 2.15 As far as possible, the suitability of housing sites for affordable housing is identified in our Camden Site Allocations Local Development Framework document. However, a high proportion of the affordable housing provided in the borough is on sites that that have not been identified in advance. Where a site has been allocated for affordable housing or a proportion of affordable housing, or has a valid consent for a development including affordable housing, the Council will resist development that fails to include appropriate affordable housing provision. The appropriateness of an affordable

housing contribution will be considered in terms of the criteria set out in policy DP3, including the financial viability of the development. The Council will also resist the loss of any existing affordable housing, as set out in policy DP4.

- 2.16 Most additional housing for older people and vulnerable people is likely to be delivered by independent providers such as registered social landlords or charities. Where a site has been allocated to provide housing for older people or vulnerable people, the Council will resist housing development that fails to include these uses. The Council will also resist the loss of any existing housing for older people or for vulnerable people, as set out in policies DP7 and DP8.

Loss of residential floorspace

- 2.17 As set out in Core Strategy section CS6 and paragraph 2.6 above, the expected delivery of additional homes from 2010/11 to 2024/25 falls significantly short of the projected growth in the number of households up to 2026. Any loss of residential floorspace that could potentially house an individual or household would worsen this shortfall, and will be therefore be resisted by the Council. As noted in paragraph 2.5, housing takes a wide variety of forms capable of providing permanent residential accommodation. Policy DP2 relates to all of these forms, (although more detailed guidance is given in policies DP4, DP7, DP8 and DP9 on loss of affordable housing, sheltered housing and care homes for older people, accommodation for homeless people and vulnerable people, student housing, bedsits and other housing with shared facilities).
- 2.18 In some cases, residential accommodation is ancillary to another use, such as a caretaker's flat at a school, a staff flat above a shop or pub, or a nurses' home at a hospital. Alterations between the proportion of floorspace in the main use and the ancillary use will generally be outside planning control. However, where the development involves changing the main use or separating the housing floorspace from the main use, it will generally be subject to planning control, and we will seek to protect the residential floorspace.
- 2.19 In some circumstances, it may be appropriate for residential floorspace to be re-provided on an alternative site. We will have regard to policy DP1 (mixed-use development) when considering whether housing should be retained on-site or re-provided off-site. For the purposes of policy DP2, the Council will regard losses of residential floorspace as material if they reduce the number of people who can occupy a home or property. For the purposes of applying policy DP2 to hospitals and care homes (within Use Class C2), protection will apply only to the floorspace previously in permanent residential use, including staff housing, dormitories, permanent accommodation for people needing residential care, and any communal or circulation space associated with these. Additional guidance on protection of key-worker affordable housing for healthcare staff is included in Policy DP4.

Conversion to short-stay accommodation

- 2.20 There is a demand for short term and temporary accommodation in the borough, primarily to provide for visitors. This accommodation falls outside the Council's land-use priority for housing, and new demand should be met from appropriate sites in non-residential use, rather than sites used for permanent housing. In London, a switch from permanent housing to properties let for less than 90 days is considered to be a material change of use (under the amended Greater London Council (General Powers) Act 1973). The Council will resist development that changes permanent housing into such accommodation. Proposals to provide short-term accommodation for vulnerable people (such as people at risk from domestic violence) will be assessed in accordance with policy DP8.
- 2.21 Proposals for new short-term and temporary accommodation will be considered taking into account policies that seek to protect existing uses. Where a proposal involves accommodation for short-term visitors to Camden, the Council will take into account policy DP14 relating to tourism development and visitor accommodation.

Net loss of two or more homes

- 2.22 The expected shortfall in the delivery of homes up to 2024/25 is potentially worsened by the loss of dwellings in small schemes for housing conversion and redevelopment. In each of the 5 years

up to 2007/08, planning permission was granted for the loss of more than 80 dwellings in small conversion and redevelopment schemes, which, when implemented, will add to Camden's (net) annual target of 595 additional homes per year. As a result, there is considered to be little scope for the loss of existing homes in the borough, even where this does not involve loss of floorspace. Where development involves the demolition or other loss of homes, the Council will generally expect it to provide a similar or greater number of replacement dwellings, to an equivalent or better standard than the homes removed.

- 2.23 The majority of permissions granted for the loss of homes involved schemes to combine 2 or more homes into a single large dwelling. Within the affordable housing stock, these changes are justified by the severe problems of overcrowding and the high proportion of existing one-bed dwellings. However, there is no comparable mismatch across the borough's market sector, and typical layouts suggest that merger of existing market homes is largely geared to a demand for high value housing rather than the creation of additional bedrooms for large families. Therefore, schemes that would create a loss of more than one residential property will generally be resisted. The Council does not seek to resist schemes combining dwellings that involve the loss of a single home.
- 2.24 The nature of the stock of market housing varies across the borough, and some areas have a much higher proportion of large dwellings than others. A mix of large and small units in an area can help to create more balanced communities (as different size dwellings meet the housing needs of different parts of the community) and increase housing choice. To achieve a more varied mix of housing, the Council will favourably consider proposals that create large homes out of smaller homes in parts of the borough where there is a relatively low proportion of large dwellings (that is, the wards of Bloomsbury, Holborn and Covent Garden, King's Cross, Kilburn, Regent's Park and St Pancras and Somers Town).
- 2.25 Some housing in the borough does not conform to current residential space standards. These are usually homes that were built before the standards were introduced or without the benefit of planning consent. Where existing homes fall substantially below the residential space standards set out in our Camden Planning Guidance supplementary document, the Council may consider proposals involving the loss dwellings in order to meet the standards. We will consider proposals favourably if existing homes are 20% or more below the space standards and the loss of dwellings is no greater than is necessary to meet the standard.
- 2.26 There is a particular shortage of affordable homes for large families in the borough (see Core Strategy section CS6 and policy DP5 below). Opportunities to reduce this shortage and reduce overcrowding could arise by reconfiguring or redeveloping existing housing, especially the stock of Council housing, which contains a disproportionate number of one-bedroom dwellings. The Council will favourably consider proposals that create large affordable housing for families by combining or redeveloping smaller affordable dwellings provided that there is no overall loss of residential floorspace.

Small-scale healthcare practices

- 2.27 Small-scale healthcare practices (such clinics for osteopathy and physiotherapy) may appropriately be provided in residential areas to ensure they are easily accessible to the people that need them, sometimes in association with the homes of the practitioners. The Council may support the loss of residential floorspace to provide these and similar small-scale healthcare facilities provided that the loss will not exceed one dwelling; no alternative non-residential premises are available nearby; and the proposal will meet needs in a local catchment. If there is no longer a need for these healthcare practices, the Council will expect the floorspace to return to residential use.

Key evidence and references

- Camden Housing Needs Study Update 2008
- The London Plan (consolidated with Alterations since 2004); Mayor of London; 2008
- Planning Policy Statement (PPS) 3 – Housing

DP3. Contributions to the supply of affordable housing

- 3.1 Core Strategy policy CS6 indicates that the Council will aim to secure high quality affordable housing for Camden households that are unable to access market housing. Policy DP3 supports the delivery of CS6 by setting out our detailed approach to providing affordable housing.
- 3.2 Policy DP3 is concerned primarily with self-contained houses and flats (Use Class C3), including self-contained sheltered housing for older people. Policy DP3 will also be applied to proposals for bedsits or other permanent housing with shared facilities if the development could be occupied lawfully as self-contained dwellings in Use Class C3 without submission of a further planning application (please see paragraphs 9.2 to 9.3 for more details). Affordability may also be a consideration relevant to care homes for older people, accommodation for homeless people and accommodation for vulnerable people, however the model for affordable housing provision established by policy DP3 will not generally be suitable for housing that is not self-contained.
- 3.3 Policy DP3 does not apply to genuine student housing, which has a number of characteristics which distinguish it from other forms of housing:
- during term-time, it is available exclusively to students;
 - most includes some shared facilities or services;
 - rents are not subject to public control or subsidy;
 - accommodation is often not available to residents for the full calendar year;
 - there is no potential to nominate tenants from households in need of affordable housing;
 - no family accommodation is included.

Proposals for student housing will be assessed having regard to policies DP2 and DP9.

- 3.4 The Council seeks to protect existing affordable housing, whether or not it is self contained, through policy DP4.



DP POLICY

DP3 – Contributions to the supply of affordable housing

The Council will expect all residential developments with a capacity for 10 or more additional dwellings to make a contribution to the supply of affordable housing.

The Council will seek to ensure that where two-or-more development sites are adjacent and related, the appropriate affordable housing contribution is comprehensively assessed for all the sites together. Where development sites are split or phased, the Council will seek to use legal agreements to ensure that all parts or phases make an appropriate affordable housing contribution.

The Council will expect the affordable housing contribution to be made on site, but where it cannot practically be achieved on site, the Council may accept off-site affordable housing, or exceptionally a payment-in-lieu.

The Council will negotiate the development of individual sites and related sites to seek the maximum reasonable amount of affordable housing on the basis of an affordable housing target of 50% of the total addition to housing floorspace, but will apply the target with regard to a sliding scale from 10% for developments with capacity for 10 dwellings to 50% for developments with capacity for 50 dwellings.

In considering whether an affordable housing contribution should be sought, whether it can practically be made on site, and the scale and nature of the contribution that would be appropriate, the Council will also take into account:

- a) access to public transport, workplaces, shops, services and community facilities;
- b) the character of the development, the site and the area;
- c) site size, and constraints on including a mix of market and affordable tenures;
- d) the economics and financial viability of the development including any particular costs associated with it;
- e) the impact on creation of mixed and inclusive communities; and
- f) any other planning objectives considered to be a priority for the site.

- 3.5 The government defines two types of affordable housing. **Social rented** housing is managed by affordable housing providers such as the Council and Housing Associations, and rents are set in accordance with government targets. **Intermediate affordable** housing costs more than social rented housing but substantially less than market housing, and caters for other occupiers who are unable to afford market housing. Intermediate affordable housing includes housing for **key workers**, such as teachers, nurses, and staff in the emergency services.
- 3.6 In negotiations related to affordable housing, the Council will proceed on the basis of the detailed definitions and considerations for affordable housing, social rented housing and intermediate affordable housing contained in government guidance, the London Plan, and relevant Mayoral guidance. Where necessary, these will be supported by guidance in our Camden Planning Guidance supplementary document. The Council will seek to negotiate legal agreements to secure:
 - the delivery affordable housing;
 - its continued availability as affordable housing; and
 - access to it by Camden households that are unable to access market housing.

Developments that should make a contribution to the supply of affordable housing

- 3.7 The Council considers that all developments with capacity for 10 or more additional dwellings should contribute to affordable housing in Camden. This is consistent with the site capacity threshold proposed by the London Plan, but supplements this with explicit exclusion of any homes that already exist on the development site. We acknowledge that this threshold should be applied sensitively to avoid deterring development that exceeds the threshold and reducing the overall supply of housing.
- 3.8 The Council considers that a floorspace of 1,000 sq m (gross) is capable of accommodating 10 family dwellings, and will expect all residential developments that would provide additional built residential floorspace of 1,000 sq m (gross) to make a contribution to the supply of affordable housing. The Council may also seek a contribution from developments adding less than 1,000 sq m (gross) residential floorspace if other considerations suggest that the site has capacity for 10 additional dwellings. Our Camden Planning Guidance supplementary document gives further information on assessing site capacity.
- 3.9 As noted in paragraph 2.9 under policy DP2, the parts of the London Plan density matrix that apply to most of Camden provide for densities of 45 to 405 dwellings per hectare – which suggests an average density of 225 dwellings per hectare (or per 10,000 sq m). Given site coverage and building heights typical in Camden, the floorspace threshold is generally consistent with the density matrix. However, in considering whether a specific site has capacity for 10 or more dwellings, the Council will assess which cells in the London Plan density matrix are appropriate to the site.
- 3.10 Sometimes two or more adjacent and related sites come forward for housing development in succession, for example where an existing user relocates in phases or a site is sold in parcels. In these situations, the Council will encourage comprehensive proposals for development of all related sites, and a single assessment of the appropriate affordable housing contribution across all components. A comprehensive treatment will facilitate the involvement of an affordable housing provider, assist efficient transfer and management of the affordable homes, and allow the development to make the best possible contribution to a mixed and inclusive community. Similar considerations will apply where a non-residential building or range of buildings comes forward for housing conversion floor-by-floor or wing-by-wing.
- 3.11 The Council will seek to prevent a succession of related proposals that fall just below the capacity threshold of 10 dwellings or 1,000 sq m (gross). We will seek legal agreements to ensure that each part of a split or phased development makes an appropriate affordable housing contribution, having regard to the contribution that would arise from a single assessment across all components. If appropriate, the Council will use legal agreements to ensure that the affordable housing contribution is triggered by the phase that brings the cumulative housing total to 1,000 sq m (gross), and increases in accordance with the final cumulative housing total after a specified period.
- 3.12 As indicated in paragraph 2.8 under policy DP2, where a mixed-use scheme is appropriate, the Council will seek to maximise the contribution to the supply of housing, taking into account development policy DP1 and other relevant considerations. The Council will seek to ensure that non-residential elements meet a demonstrable need or other planning objectives rather than being included to reduce the housing element below the capacity threshold of 1,000 sq m (gross).

Whether the affordable housing contribution is expected on-site

- 3.13 On-site contributions to affordable housing offer the best prospect for mixed and inclusive communities, offer the best prospect for timely delivery of both the affordable and market elements of the development, and avoid the difficulties of having to identify a second suitable site nearby that can viably be developed for affordable housing. However, the Council accepts that off-site solutions will be necessary where it is not practical to include affordable housing within a market housing development, for example where the development is relatively small (up to 3,500 sq m gross). The Council also accepts that a mix of on-site and off-site contributions may sometimes be appropriate, for example if it is practical to include intermediate affordable housing or social rented housing within the development, but not to include both.

- 3.14 In considering whether an off-site contribution is appropriate, the Council will consider the criteria set out in policy DP3, and will also consider whether:
- physical constraints of the site or premises would make on-site affordable elements impractical for management purposes;
 - the management or service charges of an on-site scheme would be too costly for affordable housing providers or occupiers to meet;
 - particular costs associated with the development would require an excessively high amount of subsidy for on-site provision, but the economics of the development do not preclude making an off-site affordable housing contribution;
 - the necessary affordable housing funding is unlikely to be secured within a reasonable timescale to enable an on-site scheme;
 - an off-site contribution will maximise the overall delivery of housing and affordable housing.
- 3.15 Where the principle of an off-site affordable housing contribution is accepted, the Council will initially seek provision of a specified amount of affordable housing on an identified site or sites. If a site cannot be identified, the Council may alternatively accept a specified amount of affordable housing on an unidentified site or sites, to be brought forward to an agreed timescale. In this situation, the Council will seek to ensure that the affordable housing is developed in reasonable proximity to the proposed market housing and so contributes to a mixed and inclusive community. A financial contribution towards affordable housing may be accepted in exceptional circumstances, for example, if:
- no suitable affordable housing sites are likely to come forward in the short or medium-term; or
 - the appropriate affordable housing contribution is too small to form a stand-alone development and there are no opportunities to link it to an alternative development nearby.
- 3.16 Where off-site development of affordable housing is accepted, the proportion of affordable housing will be considered across all related sites taken together. Where 50% is considered to be the appropriate contribution, the affordable housing should amount to 50% of all housing delivered, and not 50% of the amount of market housing (since an off-site contribution equivalent to 50% of the market housing would amount to only 33% of all housing delivered). However, the appropriate contribution will be considered in the light of all the factors set out in policy DP3. Further guidance on the appropriate affordable housing proportion is given below. Further guidance on calculating off-site contributions, including the appropriate level of financial contributions, is given in our Camden Planning Guidance supplementary document.

Applying the 50% target and the sliding scale

- 3.17 Where a development site has capacity for 10-or-more additional dwellings, the Council will seek the maximum reasonable amount of affordable housing in accordance with Core Strategy policy CS6, taking into account all the site-specific considerations set out in policy DP3. The Council will take positive measures to encourage developers to bring forward schemes that reach and exceed the capacity threshold of 10 dwellings or 1,000 sq m (gross), increasing the total number of homes that can be delivered, and increasing the proportion of schemes that make a contribution to affordable housing supply:
- Affordable housing targets will not apply to residential floorspace already on site (whether retained or replaced as part of a redevelopment), although all existing housing floorspace and affordable housing floorspace will be protected by policies DP2 and DP4.
 - The 50% target will operate on a sliding scale for housing developments, subject to the financial viability of the development, with a norm of 10% for 1,000 sq m (gross) of additional housing and 50% for 5,000 sq m (gross) of additional housing, considered to be sites with capacity of 10 dwellings and 50 dwellings respectively. A scheme of 2,000 sq m would normally provide 20% affordable housing, a scheme of 4,000 sq m would normally provide 40% affordable housing.
 - The Council will take a flexible approach to provision of off-site affordable housing for schemes close to the affordable housing threshold, that is between 1,000 sq m (gross) and approximately 3,500 sq m (gross) of additional housing.

- 3.18 The sliding scale cannot be applied to mixed use developments in the same way as residential development given the need to take account of the non-residential floorspace and its influence on the economics of the development. Calculating on the basis of a sliding scale would also become very complex in tandem with the flexibility for off-site housing contributions that is provided by mixed use development policy DP1. Therefore, the sliding scale approach will not be applied to mixed use schemes involving 1,000 sq m (gross) or more of additional non-residential floorspace. However, when considering the appropriateness of any affordable housing contribution in the context of a mixed use development, the Council will take into account the other criteria included in policy DP3, with particular regard to the economics and financial viability of the development.
- 3.19 We believe that a flexible approach is needed towards housing developments with capacity for 50 or fewer dwellings because:
- a 50% target implies that a scheme with 20 dwellings in total would be needed to produce more than 9 market dwellings;
 - for market housing development in Camden from 2001 to 2008 there have been a disproportionate number of proposals immediately below the affordable housing threshold (in this period, the threshold was 15 dwellings or more);
 - for market housing development in Camden from 2005 to 2008 the 50% target has generally not been viable for schemes that provide less than 3,500 sq m (gross) of housing (approx 35 dwellings) (Camden Development Monitoring).
- 3.20 As is indicated by Core Strategy policy CS6, and paragraph 6.23 in particular, when seeking affordable housing contributions on each development site, we will calculate on the basis of floorspace when negotiating the overall percentage of affordable housing, and the proportion of social rented and intermediate affordable housing. A scheme for 10 or more dwellings with less than 1,000 sq m floorspace (gross) would be below the scope of the sliding scale, and any proportion of affordable housing sought would be considered on the basis of the criteria included in policy DP3, with particular regard to the economics and financial viability of the development. Camden Planning Guidance gives further details of how the Council will operate the capacity threshold, the sliding scale and the 50% affordable housing target to ensure that sites make the maximum contribution possible to the overall supply of housing as well as affordable housing.
- 3.21 Paragraphs 6.54 and 6.57 under Core Strategy policy CS6 indicate that the Council intends to be flexible in pursuit of its policy objectives to take into account our monitoring of overall housing supply in the light of economic circumstances. These paragraphs note that the Council may vary the proportion of market housing and affordable housing. We will monitor the operation of the sliding scale closely to assess its impact on the supply of affordable housing and market housing. As set out in section 4 – *Delivery and Monitoring*, we will identify the need to reassess or review any policies or approaches in our Annual Monitoring Report.





Varying the proportion of social rented housing and intermediate housing

- 3.22 Core Strategy policy CS6 sets guidelines of 60% social rented and 40% intermediate affordable housing for negotiations on the nature of affordable housing on individual and related development sites. These guidelines will be applied flexibly, taking into account all the set of criteria given in development policy DP3. We recognise that high land costs and residential values on a number of sites in Camden will make intermediate affordable housing too expensive for households who would otherwise seek homes that cost more than social rent and less than market housing. Taking this into account alongside other criteria in policy DP3, the Council may prioritise social rented housing above intermediate affordable housing where a development is unable to provide more than 30% affordable housing floorspace in total.
- 3.23 The Council welcomes proposals for development led by affordable housing which will make a major contribution towards our borough-wide 50% affordable housing target. Schemes are considered to be affordable housing-led if they provide substantially more than 50% affordable housing. Although the guidelines in Core Strategy policy CS6 of 60% social rented and 40% intermediate affordable housing will generally apply, schemes led by affordable housing may exclude social rented or intermediate housing where this is warranted by the considerations set out in policy DP3, subject to the impact of the proposal on the creation of mixed and inclusive communities. Some forms of intermediate affordable housing require limited or no public subsidy, but are still offered for rent or sale at prices that are affordable compared with self-contained flats for the general market. The Council recognises that proposals providing 100% intermediate affordable homes of this type may be financially viable on some sites, and be acceptable in terms of the criteria in policy DP3.

Other factors affecting the scale, nature and location of the affordable housing

- 3.24 **Access to public transport, workplaces, shops, services and community facilities** – Generally, sites within the borough have a sufficient level of access to local amenities and public transport to support on-site provision of affordable housing. We will not exempt a site from on-site provision on these grounds unless it is demonstrated to the Council's satisfaction that there is a lack of essential services accessible from the site.

- 3.25 **The character of the development, the site and the area** – In some cases, existing development on or near a housing proposal may limit the potential for inclusion of affordable housing. For example, the retention and conversion of an existing building on-site (especially a listed building or a building that makes a positive contribution to a conservation area) may prevent the creation of the stair cores necessary to accommodate more than one tenure, or the creation of dwelling sizes appropriate for affordable housing. Existing buildings adjacent or nearby may prevent the inclusion of dual aspect accommodation, which is an important consideration where social rented accommodation is sought, as tenants may often be in their homes during the day. In these circumstances, the Council may be prepared to consider accepting an off-site contribution to affordable housing. The character of the area may have an impact on the nature of affordable housing sought if there is an existing concentration of housing in a single tenure. The creation of mixed and inclusive communities is discussed more fully in paragraph 3.29.
- 3.26 **Site size, and constraints on including a mix of market and affordable tenures** – The Council acknowledges that it is not usually possible for social rented housing and market housing to share the same stair/lift arrangements and communal inside spaces. This is due to the higher costs and maintenance requirements associated with the management, materials and finishes that are favoured for market housing, and the legal provisions that prevent a different service charge between market housing and affordable housing that share common service arrangements. Introducing additional entrances and stair/lift areas for affordable housing will be difficult on constrained sites, and can reduce the viability of development. As indicated in paragraph 3.17, we will take a flexible approach to off-site affordable contributions for schemes close to the affordable housing threshold, considered to be those of less than 3,500 sq m housing (gross). These factors will be particularly relevant when negotiating the mix of housing tenures and the appropriateness of an off-site contribution to affordable housing.
- 3.27 **Development economics, financial viability, and particular costs** – In negotiating an affordable housing contribution, the Council will consider the full range of costs associated with a development. These may include costs associated with contaminated land, heritage considerations (such as the restoration of a listed building), and environmental considerations (such as physical improvements for the regeneration of an area). Where a proposed development would not meet the Council's affordable housing target, we will expect submission of a financial viability appraisal to justify the proportion of affordable housing proposed. In appropriate circumstances, the Council may also seek an independent verification of the appraisal funded by the developer. Further details of financial viability appraisal mechanisms are provided in our Camden Planning Guidance supplementary document.
- 3.28 The Council recognises that achieving the affordable housing target on most sites will require public subsidy. We will therefore occasionally review our supplementary planning documents to indicate how we will negotiate provision in the light of government funding, the extent of the Council's own affordable housing fund, and prevailing land values and construction costs.





- 3.29 **The creation of mixed and inclusive communities, and other planning objectives considered to be a priority for the site** – Existing affordable housing is spread across most of the borough, some of it in clusters or small blocks, some on larger estates. The presence of an affordable housing estate near a proposed housing development will not generally be considered a reason for the Council to seek a lower proportion of affordable housing. However, we will have regard to the benefits of having a mixture of tenures in each part of the borough, and any social problems arising from existing concentrations of a single tenure. In some circumstances, the presence of an existing concentration of social rented housing may justify the development of a higher proportion of intermediate affordable homes or a lower proportion of large affordable homes.
- 3.30 The Council recognises that where it seeks other planning benefits from a development or seeks to meet other planning objectives, this may limit the potential of a site to provide affordable housing. Examples may include a requirement to contribute to funding for transport infrastructure or the inclusion of flexible space for businesses within a development. When negotiating the proportion of affordable housing, the Council will have regard to other benefits arising from a proposal. The Council will expect costs associated with all aspects of a proposal to be included in any financial viability appraisal, including the costs and returns associated with non-residential spaces, and any expenditure required to meet the terms of a legal agreement.

Car parking for affordable housing

- 3.31 Many of those in need of affordable housing, particularly existing social housing tenants, already own a car. In some cases, affordable housing residents may need a car in association with their job. So that new affordable housing is able to meet the housing needs of such residents, it will sometimes be appropriate to provide parking spaces for residents of affordable homes. Where development involves market housing in conjunction with social and/or intermediate affordable housing, the Council will seek a proportion of any off-street car-parking spaces for households occupying each housing type. In negotiating the proportion of car-parking spaces for occupiers of social rented and intermediate affordable housing, the Council will have regard to:
- the needs of any disabled people likely to occupy the housing;
 - the prevailing level of car ownership for each housing type;
 - the impact of the car parking spaces on the economics and financial viability of the development and the affordable housing; and
 - the practicalities of allocating a limited number of parking spaces to occupiers of affordable housing.

Key evidence and references

- Camden Housing Needs Study Update 2008
- Camden Affordable Housing Viability Study 2009
- The London Plan (consolidated with Alterations since 2004); Mayor of London; 2008
- Planning Policy Statement (PPS) 3 – Housing

DP13. Employment premises and sites

- 13.1 Having a range of sites and premises across the borough to suit the different needs of businesses for space, location and accessibility is vital to maintaining and developing Camden's economy. An increase in the number and diversity of employment opportunities is fundamental to improving the competitiveness of Camden and of London. The Council wants to encourage the development of a broad economic base in the borough to help meet the varied employment needs, skills and qualifications of Camden's workforce.
- 13.2 Camden Core Strategy Policy CS8 – *Promoting a successful and inclusive Camden economy* sets out our overall strategy for Camden's economy. It aims to make sure that the borough's economy will be stronger and more diverse while helping more residents to have the skills, education and training to take up local job opportunities and bridge Camden's skills gap. It identifies the locations for major office development, protects Camden's main Industry Area and industrial premises, as well as supporting business growth and employment initiatives and encouraging training schemes. Policy DP13 supports the delivery of the Core Strategy by ensuring that sufficient sites are retained to enable a variety of commercial and industrial business to find premises and continue to operate. It is therefore important to refer to Core Strategy policy CS8 alongside this policy.

DP POLICY

DP13 – Employment premises and sites

The Council will retain land and buildings that are suitable for continued business use and will resist a change to non-business unless:

- a) it can be demonstrated to the Council's satisfaction that a site or building is no longer suitable for its existing business use; and
- b) there is evidence that the possibility of retaining, reusing or redeveloping the site or building for similar or alternative business use has been fully explored over an appropriate period of time.

Where a change of use has been justified to the Council's satisfaction, we will seek to maintain some business use on site, with a higher priority for retaining flexible space that is suitable for a variety of business uses.

When it can be demonstrated that a site is not suitable for any business use other than B1(a) offices, the Council may allow a change to permanent residential uses or community uses, except in Hatton Garden where we will expect mixed use developments that include light industrial premises suitable for use as jewellery workshops.

Where premises or sites are suitable for continued business use, the Council will consider redevelopment proposals for mixed use schemes provided that:

- c) the level of employment floorspace is maintained or increased;
- d) they include other priority uses, such as housing and affordable housing;
- e) premises suitable for new, small or medium enterprises are provided;
- f) floorspace suitable for either light industrial, industry or warehousing uses is re-provided where the site has been used for these uses or for offices in premises that are suitable for other business uses;
- g) the proposed non-employment uses will not prejudice continued industrial use in the surrounding area.

The Council will support the provision of live/work premises provided they do not:

- h) result in the loss of any permanent residential units; or
- i) result in the loss of sites in business or employment use where there is potential for that use to continue.

- 13.3 When assessing proposals that involve the loss of a business use we will consider whether there is potential for that use to continue, taking into account whether the site:
- is located in or adjacent to the Industry Area, or other locations suitable for large scale general industry and warehousing;
 - is in a location suitable for a mix of uses including light industry and local distribution warehousing;
 - is easily accessible to the Transport for London Road Network and/or London Distributor Roads;
 - is, or will be, accessible by means other than the car and has the potential to be serviced by rail or water;
 - has adequate on-site vehicle space for servicing;
 - is well related to nearby land uses;
 - is in a reasonable condition to allow the use to continue;
 - is near to other industry and warehousing, noise/vibration generating uses, pollution and hazards;
 - provides a range of unit sizes, particularly those suitable for small businesses (under 100sqm).
- 13.4 Where it is proposed to redevelop employment land for another business use, including offices, the Council will seek to retain physical features that will enable the flexible use of the premises for a range of business purposes. This will help to maintain the range of employment premises available and is especially important given the limited supply of non-office premises. The typical design features that enable flexible use are:
- clear and flexible space with few supporting columns;
 - adequate floor to ceiling heights;
 - wide doors/corridors;
 - loading facilities;
 - large amounts of natural light;
 - availability of a range of units sizes; and
 - space for servicing by/parking of commercial vehicles.
- More information on the demand for different types and specification of business premises can be found in Camden Planning Guidance.
- 13.5 In addition to the considerations above, where a change of use to a non-business use is proposed, the applicant must demonstrate to the Council's satisfaction that there is no realistic prospect of demand to use the site for an employment use. The applicant must submit evidence of a thorough marketing exercise, sustained over at least two years. The property should be marketed at realistic prices, include a consideration of alternative business uses and layouts and marketing strategies, including management of the space by specialist third party providers. More information on our approach to changes of use involving employment sites and premises can be found in Camden Planning Guidance.
- 13.6 Where premises or sites are suitable for continued business use, the Council will consider redevelopment schemes which maintain the employment floorspace and provide other priority uses, such as housing. The re-provision of employment floorspace should be able to accommodate a range of business types and sizes (e.g. new businesses, small and medium sized enterprises¹ (SMEs) and creative businesses). Applicants must demonstrate to the Council's satisfaction that the commercial element is appropriate to meet the likely needs of the end user. The provision of inappropriate business space (e.g. inappropriate floor to ceiling height or poor access arrangements) will not be acceptable as this often fails to attract an occupier, which can lead to vacancy. Clear separation of the residential element and effective management of the business space will also be important. This is in line with the approach to flexible and affordable workspace that is taken in the Core Strategy policy CS8 – *Promoting a successful and inclusive Camden economy*. Further information on new workspace can be found in Camden Planning Guidance.

REFERENCES

¹ SMEs are business employing less than 50 people (small) and or less than 250 (medium) (ref: European Commission Recommendation 2003/361/EC: SME Definition)



Hatton Garden

- 13.7 In the Hatton Garden area, the conversion of office premises will only be permitted where it can be demonstrated that they have been vacant and marketed for at least two years (see para 13.5 above) and they are replaced by a mixed use development that includes light industrial premises suitable for use as jewellery workshops and residential uses, where appropriate. We will use planning obligations and conditions to ensure that premises are suitable for jewellery uses in terms of design, layout and affordability.
- 13.8 Where proposals would increase total gross floorspace by more than 200 sq m, we will seek to negotiate up to 50% of the additional floorspace as affordable premises suitable for the jewellery sector and housing, in accordance with policy DP1 on mixed use development. When the provision of workspace is not possible due to the nature of the site or the development, we will seek a financial contribution towards support for the jewellery industry. The requirement to provide workspace will be determined by the supply of such space in the area. Where considered appropriate, contributions towards training and support activities for industry in Hatton Garden may be sought in lieu of workshop provision. The level of contribution will be related to the area of workspace that would otherwise have been expected.

Live/work premises

- 13.9 It is recognised that combined live/work units can provide a valuable contribution to the range of business premises and may enable certain sites to remain in employment use. The Council will allow live/work developments where they do not result in the loss of sites that are suitable for continued business use or where they would involve the loss of permanent housing. The circumstances where continued business use would be required are detailed above in para 13.3. Planning conditions or obligations will be used to secure an element of workspace within live/work premises to ensure that a suitable working environment is provided and retained. Live/work units will be treated in the same way as housing for the operation of all other policies in this document and Camden's Core Strategy, including those on the provision of affordable housing and parking.
- 13.10 Developments of multiple live/work units will require careful management to ensure that they can become economically successful. Management could be provided by a housing association, a business support enterprise, academic/research institution or a private management company. Applicants should provide details of management arrangements for proposed live/work premises.

Definitions

13.11 Throughout this section the terms ‘business’ and ‘employment’ are used to refer collectively to the following uses:

- offices, research and development, and light industry (Use Class B1);
- general industrial uses (Use Class B2);
- storage and distribution (warehousing) (Use Class B8);
- other unclassified uses of similar nature to those above, such as depots or live/work (classed as sui generis).

Key evidence and references

- Camden Employment Land Review 2008
- Camden Business Survey (within the Employment Land Demand Study) 2004
- Camden Jewellery Sector Investment Plan 2005
- Camden Economic Development Strategy 2009
- Demand for premises of London’s SMEs; LDA 2006
- European Commission Recommendation 2003/361/EC: SME Definition
- Industrial Capacity Supplementary Planning Guidance to the London Plan; March 2008
- Planning Policy Statement (PPS) 4 – Planning for Sustainable Economic Growth; CLG; 2009



DP18. Parking standards and limiting the availability of car parking

- 18.1 Limiting the supply of car-parking is a key factor for addressing congestion in the borough and encouraging people to use more sustainable ways to travel (see Core Strategy policy CS11 – *Sustainable and efficient travel* for our overall approach to this). Policy DP18 sets out the Council's approach to parking in new development. It seeks to minimise the level of car parking provision in new developments, as well as promoting cycle parking, and the provision of spaces for car clubs and electric charging points. This policy should be read in conjunction with policy DP19, which sets out how the Council will address the potential negative impacts of parking associated with new development, and Core Strategy policy CS11.

DP POLICY

DP18 – Parking standards and limiting the availability of car parking

The Council will seek to ensure that developments provide the minimum necessary car parking provision. The Council will expect development to be car free in the Central London Area, the town centres of Camden Town, Finchley Road/Swiss Cottage, Kentish Town, Kilburn High Road and West Hampstead, and other areas within Controlled Parking Zones that are easily accessible by public transport.

Development should comply with the Council's parking standards, as set out in Appendix 2 to this document. Where the Council accepts the need for car parking provision, development should not exceed the maximum standard for the area in which it is located (excluding spaces designated for disabled people). Developments in areas of on-street parking stress should be 'car capped'.

For car free and car capped developments, the Council will:

- a) limit on-site car parking to:
 - spaces designated for disabled people,
 - any operational or servicing needs, and
 - spaces designated for the occupiers of development specified as car capped;
- b) not issue on-street parking permits; and
- c) use a legal agreement to ensure that future occupants are aware they are not entitled to on-street parking permits.

Developments will also be expected to meet the Council's minimum standards for cycle parking set out in Appendix 2.

The Council will:

- d) strongly encourage contributions to car clubs and pool car schemes in place of private parking in new developments across the borough; and
- e) seek the provision of electric charging points as part of any car parking provision.

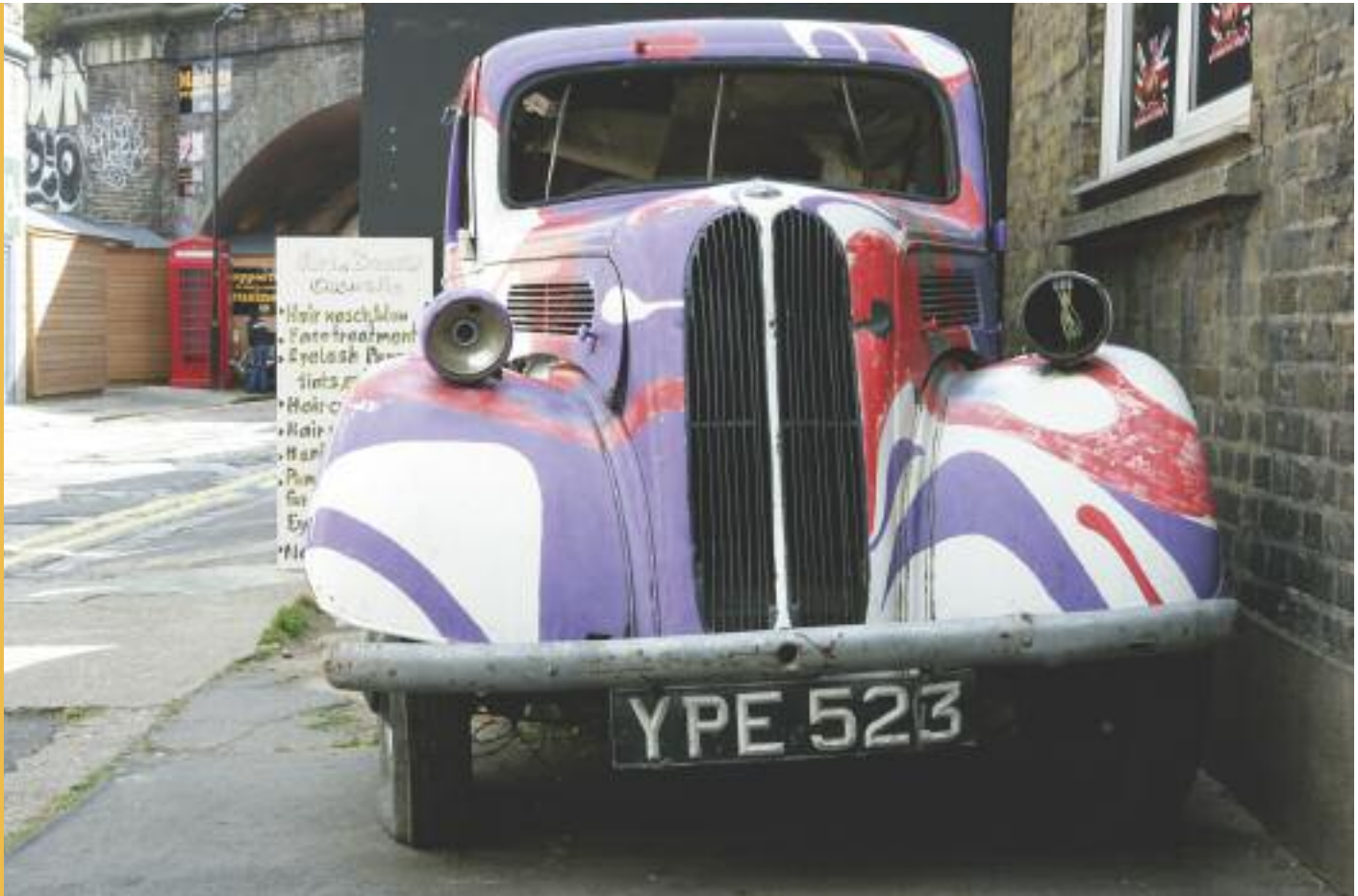
Car-free development

- 18.2 The Council generally expect development in Low Parking Provision Areas (i.e. the Central London area, our town centres and other areas with high public transport accessibility) to be car-free. Camden has been successfully securing car-free housing since 1997 as a way of encouraging car-free lifestyles, promoting sustainable ways of travelling, and helping to reduce the impact of traffic. Policy DP18 extends the car-free concept to non-residential development, which has the potential to reduce commuting by car and promote car-free work-related journeys. Car-free development can facilitate sustainability and wider objectives, including:
- freeing space on a site from car-parking, to allow additional housing, community facilities, play areas, amenity spaces and cycle parking;
 - enabling additional development where parking provision would not be acceptable due to congestion problems and on-street parking stress;
 - helping to promote alternative, more sustainable forms of transport.
- 18.3 Car-free development has no car parking within the site and occupiers are not issued with on-street parking permits. (People with disabilities who are Blue Badge holders may park in on-street spaces without a parking permit.) Car-free development should meet the Council's cycle parking standards and may, where required, include on-site space for people with disabilities, servicing, coach and taxi activity. The Central London Area and our town centres, other than Hampstead, are well-equipped to support car-free households and businesses as they have high levels of public transport accessibility, and provide opportunities to access a range of goods, services, workplaces and homes. Camden will expect development in these areas to be car-free, and will resist the inclusion of general car parking unless supported by a Transport Assessment or other compelling justification. See also paragraphs 18.8 and 18.9 below, which set out the Council's approach to removing rights to on-street parking.
- 18.4 Much of the rest of the borough has public transport accessibility levels that are moderate to excellent. Provided that parking controls are in force, the Council will expect car-free development where public transport accessibility is equivalent to levels in our town centres, and will strongly encourage it elsewhere.

Parking standards

- 18.5 Developments throughout the borough will be expected to comply with the parking standards set out in Appendix 2. The standards include:
- maximum parking standards for general car parking provision, to encourage people to consider all alternatives to private car travel;
 - minimum cycle parking standards, to encourage people to meet their travel needs by cycling;
 - minimum parking standards for people with disabilities to meet their needs; and
 - minimum standards for servicing, taxi and coach activity, to provide an alternative to on-street provision.





- 18.6 The maximum car parking standards include separate figures for Low Parking Provision Areas and for the rest of the borough. As we generally seek car free development in the Low Parking Provision Areas, we will only apply the car parking standards for these areas where a developer can demonstrate to the Council's satisfaction that such parking should be provided on a site.
- 18.7 The maximum car parking standards for employment generating uses are intended to limit the potential for commuting by private car (other than by disabled people). A workplace's operational needs are only considered to include journeys to work if travel is at times when public transport services are severely limited or if employees need continuous access to a car for work purposes whether or not they are at the workplace.
- 18.8 The Council will expect new developments in areas of high on-street parking stress to be car-capped. Car-capped development has a limited amount of on-site car parking, but no access to on-street parking permits in order to avoid any impact on on-street parking. The level of on-site provision must meet the car and cycle parking standards in Appendix 2 for the area in which a development is located, and may, where required, include on-site space for people with disabilities, servicing, coach and taxi activity. Policy DP19 below addresses in more detail the impact of parking associated with new development, including on on-street parking conditions.
- 18.9 To implement car-free and car-capped development, the Council needs to remove entitlements for parking permits from future occupiers. This will be achieved through seeking a legal agreement with the developer, as it is the only way of ensuring that all incoming occupiers are aware that they are not eligible for a permit to park on the street.
- 18.10 The Council's Parking Standards apply to all development, whether involving new construction or a change in the use of an existing building. The Council accepts the need for a flexible approach to some aspects of the minimum parking standards, for example where the nature of the street frontages preclude access to on-site car parking, and may consider the potential for designating disabled parking bays on-street. The Council will also consider the parking requirements from premises that are used by the emergency services.
- 18.11 Details of parking arrangements should be submitted with planning applications, showing how car, servicing and cycle parking requirements will be met. Guidance on the space requirements for car and cycle parking are included in Camden's Planning Guidance and Streetscape Design Manual.

Cycle parking

- 18.12 All developments will be expected to meet the Council’s cycle parking standards, as set out in Appendix 2 to this document, as a minimum. The provision of cycle parking in new developments encourages a healthy and more sustainable alternative to the use of the private car.
- 18.13 Cycle parking provision should be provided with convenient access to street level and must be secure and easy for everyone to use. Cycle parking for residents and employees cannot usually be met off-site due to the security and shelter necessary for long stays. Where applicants demonstrate that cycling provision according to these standards is not feasible on a development site, the Council may seek a contribution to off-site provision in lieu of provision within the site. Please also see policy DP17 for further guidance relating to the provision of facilities for cyclists in new developments. Further guidance on cycle parking and storage is contained in the Camden Planning Guidance supplementary document.

Car clubs and pool cars

- 18.14 Camden Core Strategy policy CS11 states that the Council will expand the availability of car clubs and business pool cars as an alternative to the private car. Car clubs and pool cars offer the benefit of removing the need for car ownership for many households and discourage the use of the car for journeys, including commuting and business trips that could be made by more sustainable modes, thus reducing the use of cars and the need for car parking spaces.
- 18.15 The Council will strongly encourage developers to provide or contribute towards car club or pool car spaces in as an alternative private parking. Provision of new spaces within developments will be encouraged in locations where they can be made available to car-club members.

Low emission vehicles

- 18.16 Camden Core Strategy policy CS11 promotes the use of low emission vehicles, including through expanding the availability of electric charging points. The Council will encourage the provision of electric vehicle charging spaces in new developments, including for electric pool cars or electric car-club cars. For general car parking, such spaces should be provided within the maximum standards set out in Appendix 2 – *Parking Standards*. The emerging draft replacement London Plan also supports the provision of electric charging points in new developments, and the Mayor’s Electric Vehicle Delivery Plan for London sets out a range of measures to encourage the use of electric vehicles and increase the number of charging points across the capital, including through provision as part of new developments.
- 18.17 The Council will encourage the provision of electric vehicle charging spaces in new developments, including for electric pool cars or electric car-club cars. For general car parking, such spaces should be provided within the maximum standards set out in Appendix 2 – *Parking Standards*.

Key evidence and references

- Camden Green Transport Strategy 2008 – 2012
- Camden Local Implementation Plan (LIP) 2005/06 – 2010/The London Plan (consolidated with Alterations since 2004); Mayor of London; 2008
- The London Plan (consolidated with Alterations since 2004); Mayor of London; 2008
- Let’s talk rubbish! Camden’s waste strategy 2007-2010 (revision 1, 2008)
- Planning Policy Guidance (PPG) 13: Transport; ODPM; 2001

Improving and protecting our environment and quality of life

DP24. Securing high quality design

- 24.1 Core Strategy policy CS14 – *Promoting high quality places and conserving our heritage* sets out the Council’s overall strategy on promoting high quality places, seeking to ensure that Camden’s places and buildings are attractive, safe, healthy and easy to use and requiring development to be of the highest standard of design that respects local context and character. Camden has a unique and rich built and natural heritage, with many areas with their own distinct character, created by a variety of elements including building style and layout, history, natural environment including open spaces and gardens, and mix of uses. We have a duty to respect these areas and buildings and, where possible, enhance them when constructing new buildings and in alterations and extensions.
- 24.2 Policy DP24 contributes to implementing the Core Strategy by setting out our detailed approach to the design of new developments and alterations and extensions. These principles will ensure that all parts of Camden’s environment are designed to the highest possible standards and contribute to providing a healthy, safe and attractive environment.
- 24.3 The Core Strategy also sets out our approach to other matters related to design, such as tackling climate change through promoting higher standards (CS13), the importance of community safety and security (CS17) and protecting amenity from new development (CS5). Further guidance on design is contained in our Camden Planning Guidance supplementary document.

DP POLICY

DP24 – Securing high quality design

The Council will require all developments, including alterations and extensions to existing buildings, to be of the highest standard of design and will expect developments to consider:

- | | |
|---|--|
| <ul style="list-style-type: none"> a) character, setting, context and the form and scale of neighbouring buildings; b) the character and proportions of the existing building, where alterations and extensions are proposed; c) the quality of materials to be used; d) the provision of visually interesting frontages at street level; | <ul style="list-style-type: none"> e) the appropriate location for building services equipment; f) existing natural features, such as topography and trees; g) the provision of appropriate hard and soft landscaping including boundary treatments; h) the provision of appropriate amenity space; and i) accessibility. |
|---|--|



Promoting good design

- 24.4 The Council is committed to design excellence and a key strategic objective of the borough is to promote high quality, sustainable design. This is not just about the aesthetic appearance of the environment, but also about enabling an improved quality of life, equality of opportunity and economic growth. We will therefore apply policy DP24 to ensure that all developments throughout the borough, including alterations and extensions to existing buildings, are of the highest standard of design. In accordance with government guidance in Planning Policy Statement (PPS) 1 – *Delivering Sustainable Development* we will not accept design that is inappropriate to its context or which fails to take opportunities to improve the character and quality of an area and the way that it is used by residents and visitors.
- 24.5 Camden is a densely built-up borough where most development involves the replacement, extension or conversion of existing buildings. Design should respond creatively to its site and its context. This concerns both smaller-scale alterations and extensions and larger developments, the design and layout of which should take into account the pattern and size of blocks, open spaces, gardens and streets in the surrounding area (the ‘urban grain’).
- 24.6 The Council seeks to encourage outstanding architecture and design, both in contemporary and more traditional styles. Innovative design can greatly enhance the built environment and, unless a scheme is within an area of homogenous architectural style that is important to retain, high quality contemporary design will be welcomed. When assessing design, we will take into account government/CABE guidance *By Design – Urban Design in the planning system: towards better practice* and our own Camden Planning Guidance supplementary document.
- 24.7 Development should consider:
- the character and constraints of its site;
 - the prevailing pattern, density and scale of surrounding development;
 - the impact on existing rhythms, symmetries and uniformities in the townscape;
 - the compatibility of materials, their quality, texture, tone and colour;
 - the composition of elevations;
 - the suitability of the proposed design to its intended use;
 - its contribution to public realm, and its impact on views and vistas; and
 - the wider historic environment and buildings, spaces and features of local historic value.
- 24.8 Buildings should be designed to be as sustainable as possible. Environmental design and construction measures are set out in Policy DP22 – *Promoting sustainable design and construction*. Sustainable development also embraces principles of social sustainability which can be addressed by new development which:
- provides comfortable, safe, healthy and accessible space for its users;
 - is fit for purpose and can accommodate future flexibility of use;
 - provides a mix of uses and types of accommodation and provides for a range of needs within the community; and
 - provides sufficient amenity space for the promotion of health and wellbeing.



- 24.9 The re-use of existing buildings preserves the 'embodied' energy expended in their original construction, minimises construction waste and reduces the use of new materials. Many historic buildings display qualities that are environmentally sustainable and have directly contributed to their survival, for example the use of durable, natural, locally sourced materials, 'soft' construction methods, good room proportions, natural light and ventilation and ease of alteration. The retention and adaptation of existing buildings will be encouraged.
- 24.10 Due to the dense nature of Camden with extensive range and coverage of heritage assets, such as conservation areas, numerous listed buildings and five strategic views and two background views crossing the borough, the Council does not consider that it is practical to identify broad areas either suitable, or not suitable, for tall buildings. In the borough, a site may be suitable for a tall building while adjacent sites are not, due to impact on either views, conservations areas or listed buildings. Indeed, in some cases, suitability for a tall building differs across a single site. Given Camden's strategic environmental characteristics, the entire borough is considered as being within the 'sensitive' category, as defined by the English Heritage/CABE Guidance on Tall Buildings (2007). Tall building proposals in Camden will therefore merit detailed design assessments. As part of the revision of the Camden Planning Guidance SPD further clarity will be provided on tall buildings and design issues in Camden.

Respecting local character

- 24.11 Given the highly built-up nature of Camden, careful consideration of the characteristics of a site, features of local distinctiveness, and the wider context is needed in order to achieve high quality development which integrates into its surroundings.
- 24.12 In order to best preserve and enhance the positive elements of local character within the borough, we need to recognise and understand the factors that create it. Designs for new buildings, and alterations and extensions, should respect the character and appearance of the local area and neighbouring buildings. Within areas of distinctive character, development should reinforce those elements which create the character. Where townscape is particularly uniform attention should be paid to responding closely to the prevailing scale, form and proportions and materials. In areas of low quality or where no pattern prevails, development should improve the quality of an area and give a stronger identity.
- 24.13 Development should not undermine any existing uniformity of a street or ignore patterns or groupings of buildings. Overly large extensions can disfigure a building and upset its proportions. Extensions should therefore be subordinate to the original building in terms of scale and situation unless, exceptionally, it is demonstrated that this is not appropriate given the specific circumstances of the building. Past alterations or extensions to surrounding properties should not necessarily be regarded as a precedent for subsequent proposals for alterations and extensions.
- 24.13 Design and Access statements should include an assessment of local context and character, and set out how the development has been informed by, and responds to it. We have prepared a series of Conservation Area Statements, Appraisals and Management Plans which describe the character and appearance of individual conservation areas and set out how the Council considers each can be conserved and enhanced. These should be used by developers to inform their understanding of the special character of the area, and we will take these into account when assessing development proposals in conservation areas. Development Policy DP25 – *Conserving Camden's heritage* provides further guidance on the preservation and enhancement of the historic environment.

Detailing and materials

- 24.15 Architectural detailing should be carefully integrated into a building. In new development, detailing should be carefully considered so that it conveys quality of design and creates an attractive and interesting building. Architectural features on existing buildings, such as cornices, mouldings, architraves, porches and chimneys should be retained wherever possible, as their loss can harm a building by eroding its detailing. The insensitive replacement of windows and doors and the cladding and painting of masonry can also spoil the appearance of buildings and can be particularly damaging if the building forms part of a uniform group.
- 24.16 Schemes should incorporate materials of an appropriately high quality. The durability and visual attractiveness of materials will be carefully considered along with their texture, colour and compatibility with existing materials. Alterations and extensions should be carried out in materials that match the original or neighbouring buildings, or, where appropriate, in materials that complement or enhance a building or area.

Contributing to the street frontage

- 24.17 Buildings should be visually interesting at street level, with entrances and windows used to create active frontages, which allow overlooking of public areas, provide a sense of vitality and contribute to making Camden a safer place (see Core Strategy policy CS17). Ground floors should be occupied by active uses and should not turn their back on streets and other public spaces.

Incorporating building services equipment

- 24.18 Building services equipment, such as air cooling, heating, ventilation and extraction systems, lift and mechanical equipment, as well as fire escapes, ancillary plant and ducting should be contained within the envelope of a building or be located in a visually inconspicuous position.

Responding to natural features

- 24.19 New developments should respond to the natural assets of a site and its surroundings, such as slopes and height differences, trees and other vegetation. Extensions and new developments should not cause the loss of any existing natural habitats, including private gardens. Core Strategy policy CS15 – *Protecting and improving our parks and open spaces and encouraging biodiversity* provides further guidance on nature conservation in Camden and the Council's strategy for trees.
- 24.20 Development within rear gardens and other undeveloped areas can often have a significant impact upon the amenity and character of an area. Gardens help shape their local area, provide a setting for buildings and can be important visually. Therefore they can be an important element in the character and identity of an area (its 'sense of place'). We will resist development that occupies an excessive part of a garden, and where there is a loss of garden space which contributes to the character of the townscape.
- 24.21 Development will not be permitted which fails to preserve or is likely to damage trees on a site which make a significant contribution to the character and amenity of an area. Where appropriate the Council will seek to ensure that developments make adequate provision for the planting and growth to maturity of large trees.





Incorporating Landscaping

24.22 As with buildings, consideration of context is essential in the design of new hard and soft landscaping. Hard landscape elements (surfaces, boundary treatments etc), and the materials from which they are made, play a significant role in defining the character and attractiveness of a site or area and reinforcing local distinctiveness. New planting can contribute to the attractiveness of a development, soften and balance the impact of buildings and contribute to the biodiversity value of a site. Effective maintenance is often essential to the success of soft landscaping (shrubs, grass etc) and, where appropriate, the Council will expect planting plans to be accompanied by a maintenance schedule. New hard and soft landscaping should be of high quality and should positively respond to its local character.

Providing amenity space

24.23 Private outdoor amenity space can add significantly to resident's quality of life and applicants are therefore encouraged to explore all options for the provision of new private outdoor space. Gardens, balconies and roof terraces are greatly valued and can be especially important for families. However, the densely built up nature of the borough means that the provision of private amenity space can be challenging, and the Council will require that the residential amenity of neighbours be preserved, in accordance with policy DP26 – *Managing the impact of development on occupiers and neighbours* and Core Strategy policy CS5 – *Managing the impact of growth and development*.

Accessibility

24.24 In line with policy DP29 – *Improving access* the Council will expect all buildings and places to meet the highest practicable standards of access and inclusion. Any adaptation of existing buildings must therefore address this issue and respond to access needs whilst ensuring that alterations are sympathetic to the building's character and appearance. Policy DP25 – *Conserving Camden's heritage* provides further guidance on providing access to listed buildings.

Key evidence and references

- By Design: Urban Design in the Planning System – Towards Better Practice; DETR/CABE; 2000
- Planning Policy Statement (PPS) 1 – Delivering Sustainable Development, 2005
- Planning Policy Statement (PPS) 12 – Local Spatial Planning, 2008
- Making design policy work, CABE; 2005
- The London Plan (consolidated with alterations since 2004); Mayor of London; 2008
- Building in Context, CABE/English Heritage, 2002
- Tree and Woodland Framework for London, Mayor of London, 2005

DP25. Conserving Camden’s heritage

- 25.1 Camden has inherited a rich architectural heritage with many special places and buildings from many different eras in the area’s history, from the historic villages of Hampstead and Highgate to Georgian squares and John Nash’s Regent’s Park terraces, from the Victorian engineering of St Pancras Station to iconic modern structures such as Centrepoint. These places and buildings add to the quality of our lives by giving a sense of local distinctiveness, identity and history. 39 areas, covering much of the borough, are designated as conservation areas, recognising their special architectural or historic interest and their character and appearance. Also, thousands of buildings in Camden are nationally listed for their special historical or architectural interest (see map 3). We have a responsibility to preserve and, where possible, enhance these areas and buildings. This policy helps to implement Core Strategy policy CS14 – *Promoting high quality places and conserving our heritage*.

DP POLICY

DP25 – Conserving Camden’s heritage

Conservation areas

In order to maintain the character of Camden’s conservation areas, the Council will:

- a) take account of conservation area statements, appraisals and management plans when assessing applications within conservation areas;
- b) only permit development within conservation areas that preserves and enhances the character and appearance of the area;
- c) prevent the total or substantial demolition of an unlisted building that makes a positive contribution to the character or appearance of a conservation area where this harms the character or appearance of the conservation area, unless exceptional circumstances are shown that outweigh the case for retention;
- d) not permit development outside of a conservation area that causes harm to the character and appearance of that conservation area; and
- e) preserve trees and garden spaces which contribute to the character of a conservation area and which provide a setting for Camden’s architectural heritage.

Listed buildings

To preserve or enhance the borough’s listed buildings, the Council will:

- e) prevent the total or substantial demolition of a listed building unless exceptional circumstances are shown that outweigh the case for retention;
- f) only grant consent for a change of use or alterations and extensions to a listed building where it considers this would not cause harm to the special interest of the building; and
- g) not permit development that it considers would cause harm to the setting of a listed building.

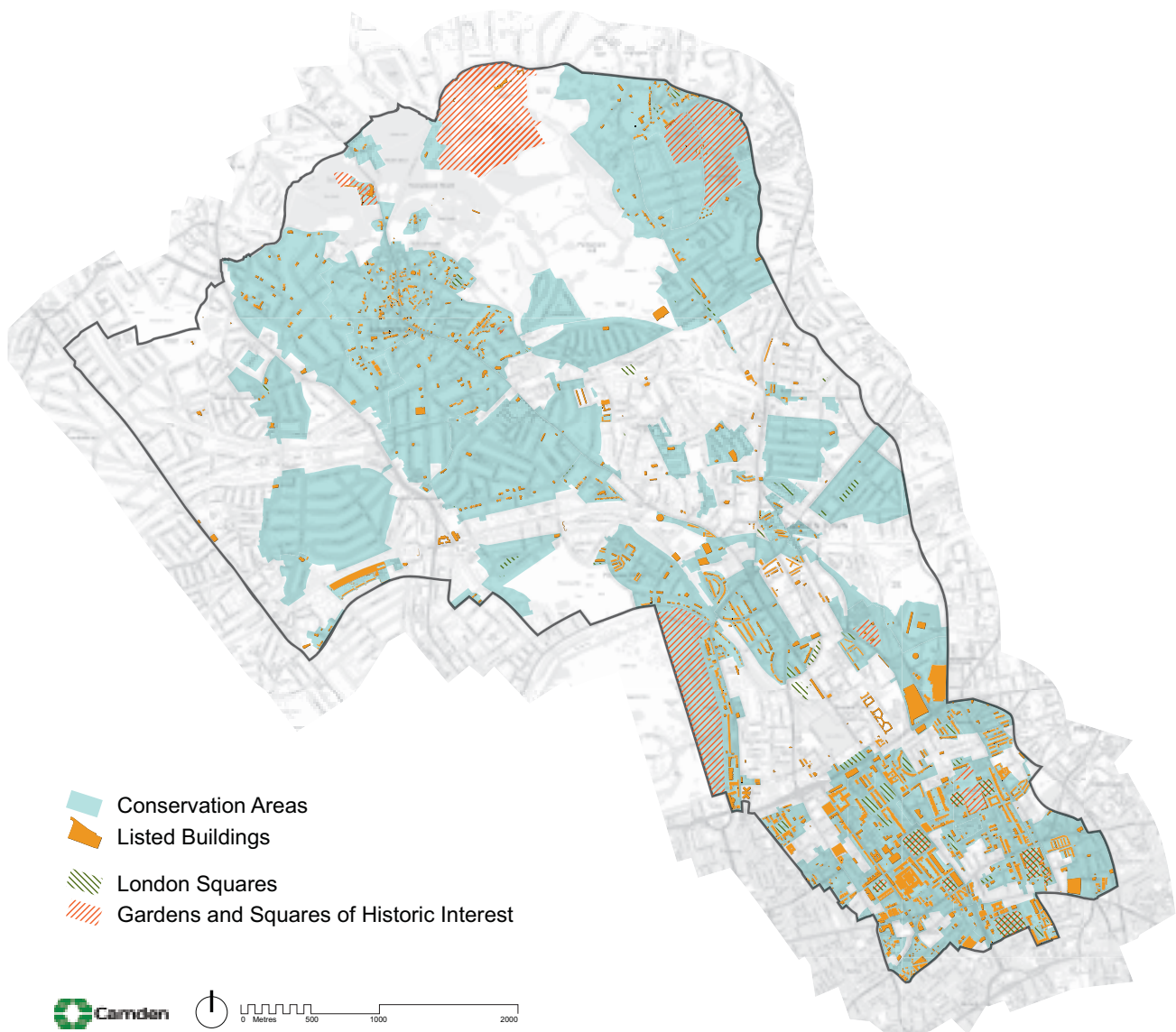
Archaeology

The Council will protect remains of archaeological importance by ensuring acceptable measures are taken to preserve them and their setting, including physical preservation, where appropriate.

Other heritage assets

The Council will seek to protect other heritage assets including Parks and Gardens of Special Historic Interest and London Squares.

Map 3: Heritage



This map is based on Ordnance Survey Material with the permission of Ordnance Survey on behalf of the Controller of Her Majesty's Stationery Office ©. Unauthorised reproduction infringes Crown copyright and may lead to prosecution or civil proceedings. Licence number LA100019726, year 2010.

Conservation Areas

- 25.2 In order to preserve and enhance important elements of local character, we need to recognise and understand the factors that create this character. The Council has prepared a series of conservation area statements, appraisals and management plans that assess and analyse the character and appearance of each of our conservation areas and set out how we consider they can be preserved and enhanced. We will take these into account when assessing planning applications for development in conservation areas. We will seek to manage change in a way that retains the distinctive characters of our conservation areas and will expect new development to contribute positively to this. The Council will therefore only grant planning permission for development in Camden's conservation areas that preserves and enhances the special character or appearance of the area. The character of conservation areas derive from the combination of a number of factors, including scale, density, pattern of development, landscape, topography, open space, materials, architectural detailing, and uses. These elements should be identified and responded to in the design of new development. Design and Access Statements should include an assessment of local context and character, and set out how the development has been informed by it and responds to it.

- 25.3 The character and appearance of a conservation area can be eroded through the loss of traditional architectural details such as historic windows and doors, characteristic rooftops, garden settings and boundary treatments. Where alterations are proposed they should be undertaken in a material of a similar appearance to the existing. Traditional features should be retained or reinstated where they have been lost, using examples on neighbouring houses and streets to inform the restoration. The Council will consider the introduction of Article 4 Directions to remove permitted development rights for the removal or alterations of traditional details where the character and appearance of a conservation area is considered to be under threat.
- 25.4 Historic buildings in conservation areas can be sensitively adapted to meet the needs of climate change and energy saving – preserving their special interest and ensuring their long term survival. For detailed advice on energy saving in historic buildings and conservation areas visit the English Heritage website and our Camden Planning Guidance supplementary document. Changes in patterns of use can also erode the character of an area. It is therefore important that, whenever possible, uses which contribute to the character of a conservation area are not displaced by redevelopment.
- 25.5 The value of existing gardens, trees and landscaping to the character of the borough is described in DP24 – Securing High Quality Design, and they make a particular contribution to conservation areas. Development will not be permitted which causes the loss of trees and/or garden space where this is important to the character and appearance of a conservation area. DP27 – Basements and lightwells provides further guidance on this issue where landscaping may be affected by basements and other underground structures.
- 25.6 The Council has a general presumption in favour of retaining buildings that make a positive contribution to the character or appearance of a conservation area, whether they are listed or not so as to preserve the character and appearance of the conservation area. We will not grant conservation area consent for the total or substantial demolition of such a building where this would harm the appearance of the conservation area, unless exceptional circumstances are shown that outweigh the case for retention. Applicants will be required to justify the demolition of a building that makes a positive contribution to a conservation area, having regard to Policy HE7 of Planning Policy Statement (PPS) 5: Planning for the Historic Environment, Camden’s conservation area statements, appraisals and management plans and any other relevant supplementary guidance produced by the Council.



- 25.7 When considering applications for demolition, the Council will take account of group value, context and setting of buildings, as well as their quality as individual structures and any contribution to the setting of listed buildings. Applications must clearly show which buildings or parts of buildings are to be demolished.
- 25.8 Applications for total or substantial demolition in conservation areas must demonstrate to the Council's satisfaction that effective measures will be taken during demolition and building works to ensure structural stability of retained parts and adjoining structures. Before conservation area consent for demolition is granted, the Council must be satisfied that there are acceptable detailed plans for the redevelopment. Any replacement building should enhance the conservation area to an appreciably greater extent than the existing building. When a building makes little or no contribution to the character and appearance of a conservation area, any replacement building should enhance the conservation area to an appreciably greater extent than the existing building.
- 25.9 Due to the largely dense urban nature of Camden, the character or appearance of our conservation areas can also be affected by development which is outside of conservation areas, but visible from within them. This includes high or bulky buildings, which can have an impact on areas some distance away, as well as adjacent premises. The Council will therefore not permit development in locations outside conservation areas that it considers would cause harm to the character, appearance or setting of such an area.
- 25.10 Our Camden Planning Guidance supplementary document provides further information on our approach to conservation areas.

Listed buildings

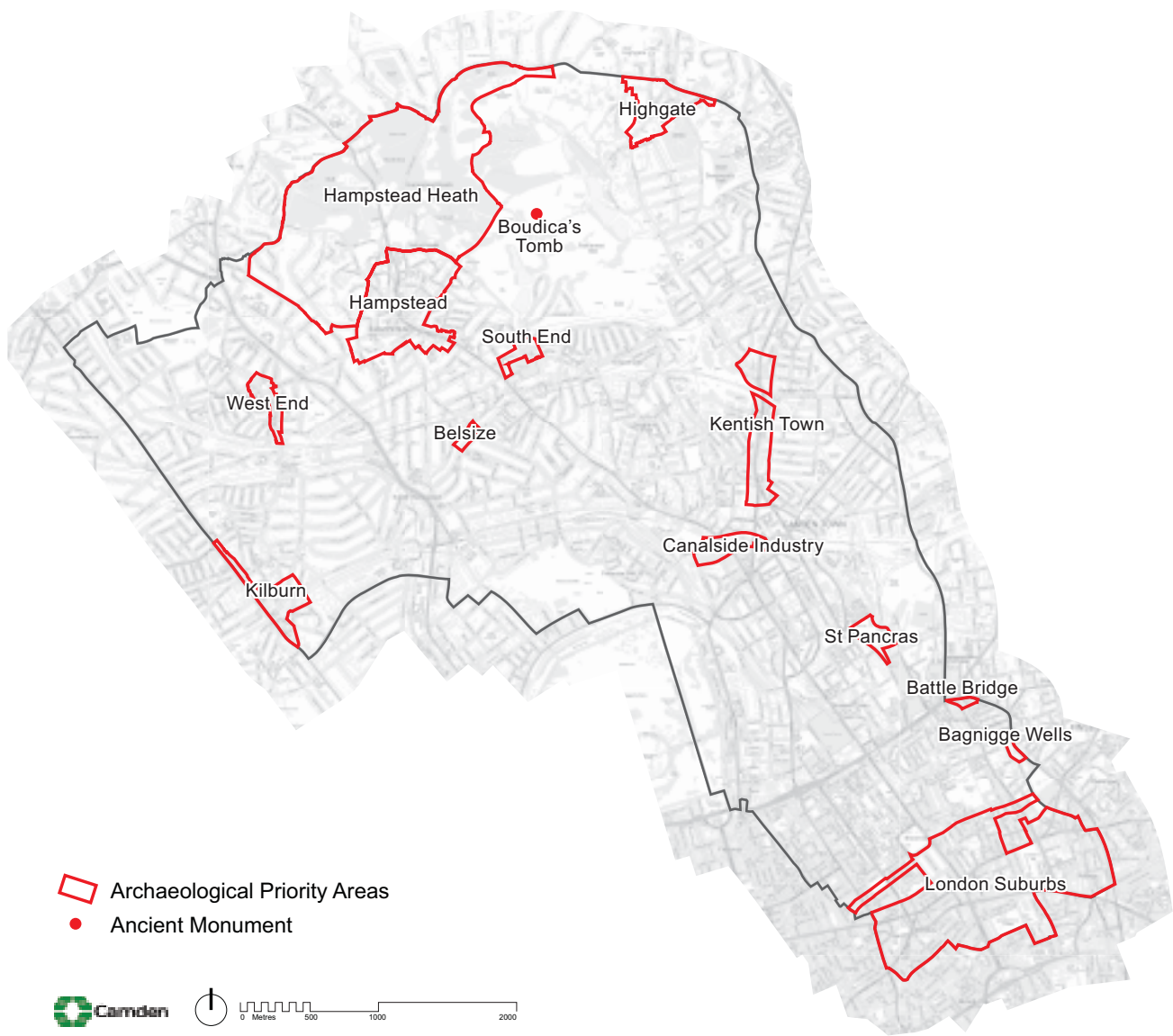
- 25.11 Camden's listed buildings and structures provide a rich and unique historic and architectural legacy. They make an important and valued contribution to the appearance of the borough and provide places to live and work in, well known visitor attractions, and cherished local landmarks. We have a duty to preserve and maintain these for present and future generations. There are over 5,600 buildings and structures in Camden that are on the statutory list for their special architectural or historic interest.
- 25.12 The Council has a general presumption in favour of the preservation of listed buildings. Total demolition, substantial demolition and rebuilding behind the façade of a listed building will not normally be considered acceptable. The matters which will be taken into consideration in an application for the total or substantial demolition of a listed building are those set out in Policy HE7 of PPS5.





- 25.13 In order to protect listed buildings, the Council will control external and internal works that affect their special architectural or historic interest. Consent is required for any alterations, including some repairs, which would affect the special interest of a listed building. The matters which will be taken into consideration in an application for alterations and extensions to a listed building are those set out in Policy HE7 of PPS5.
- 25.14 Where listed buildings are being altered for the provision of access for people with disabilities, the Council will balance their needs with the interests of conservation and preservation. We will expect design approaches to be fully informed by an audit of conservation constraints and access needs, and to have considered all available options. The listed nature of a building does not preclude the development of inclusive design solutions, and the Council expects sensitivity and creativity to be employed in achieving solutions that meet the needs of accessibility and conservation.
- 25.15 The setting of a listed building is of great importance and should not be harmed by unsympathetic neighbouring development. While the setting of a listed building may be limited to its immediate surroundings, it often can extend some distance from it. The value of a listed building can be greatly diminished if unsympathetic development elsewhere harms its appearance or its harmonious relationship with its surroundings. Applicants will be expected to provide sufficient information about the proposed development and its relationship with its immediate setting, in the form of a design statement.
- 25.16 Proposals that reduce the energy consumption of listed buildings will be welcomed provided that they do not cause harm to the special architectural and historic interest of the building or group. Energy use can be reduced by means that do not harm the fabric or appearance of the building, for instance roof insulation, draught proofing and secondary glazing, more efficient boilers and heating/lighting systems, and use of green energy sources. Depending on the form of the building, renewable energy technologies may also be installed, for instance solar water heating and photovoltaics.
- 25.17 Our Camden Planning Guidance supplementary document provides further information on our approach to listed buildings.

Map 4: Archaeological Priority Areas



This map is based on Ordnance Survey Material with the permission of Ordnance Survey on behalf of the Controller of Her Majesty's Stationery Office ©. Unauthorised reproduction infringes Crown copyright and may lead to prosecution or civil proceedings. Licence number LA100019726, year 2010.

Archaeology

25.18 Camden has a rich archaeological heritage comprised of both above and below ground remains, in the form of individual finds, evidence of former settlements and standing structures. These remains are vulnerable to modern development and land use. There are 13 archaeological priority areas in the borough (see map 4):

- | | | |
|------------------------|------------------|---------------------------|
| Hampstead Heath | Hampstead | Highgate |
| London Suburbs | South End | Bagnigge Wells |
| St Pancras | West End | Canalside Industry |
| Kentish Town | Kilburn | |
| Battle Bridge | Belsize | |

- 25.19 The archaeological priority areas provide a general guide to areas of archaeological remains, but do not indicate every find site in the borough. These are based on current knowledge and may be refined or altered as a result of future archaeological research or discoveries.
- 25.20 It is likely that archaeological remains will be found throughout the borough, both within and outside the archaeological priority areas. Many archaeological remains have yet to be discovered, so their extent and significance is not known. When researching the development potential of a site, developers should, in all cases, assess whether the site is known or is likely to contain archaeological remains. Where there is good reason to believe that there are remains of archaeological importance on a site, the Council will consider directing applicants to supply further details of proposed developments, including the results of archaeological desk-based assessment and field evaluation. Scheduled monument consent must be obtained before any alterations are made to scheduled ancient monuments. Camden has only one scheduled ancient monument: Boadicea's Grave in Hampstead Heath.
- 25.21 If important archaeological remains are found, the Council will seek to resist development which adversely affects remains and to minimise the impact of development schemes by requiring either in situ preservation or a programme of excavation, recording, publication and archiving of remains. There will usually be a presumption in favour of in situ preservation of remains and, if important archaeological remains are found, measures should be adopted to allow the remains to be permanently preserved in situ. Where in situ preservation is not feasible, no development shall take place until satisfactory excavation and recording of the remains has been carried out on site, and subsequent analysis, publication and archiving undertaken by an archaeological organisation approved by the Council.
- 25.22 The Council will consult with, and be guided by, English Heritage and the Greater London Archaeology Advisory Service (GLAAS) on the archaeological implications of development proposals. The Greater London Sites and Monuments Record, maintained by English Heritage, contains further information on archaeological sites in Camden. When considering schemes involving archaeological remains, the Council will also have regard to government Planning Policy Guidance (PPG) 16 – Archaeology and Planning.

Other heritage assets

- 25.23 In addition to conservation areas, listed buildings and archaeological remains, Camden contains 14 Parks and Gardens of Special Historic Interest, as identified by English Heritage. There are also 53 London Squares in the borough protected by the London Squares Preservation Act 1931. The Council will encourage the management of Parks and Gardens of Special Historic Interest and London Squares to maintain, and where appropriate, enhance their value and protect their setting. As set out within Core Strategy policy CS14 – *Promoting high quality places and conserving our heritage*, we will consult with English Heritage over proposals affecting these parks and gardens.

Key evidence and references

- Greater London Sites and Monuments Record; English Heritage
- Guidance on conservation area appraisals, English Heritage, 2006
- Guidance on the management of conservation areas, English Heritage, 2006

DP26. Managing the impact of development on occupiers and neighbours

- 26.1 Camden's Core Strategy seeks to sustainably manage growth so that it takes place in the most appropriate locations and meets our needs while continuing to conserve and enhance the features that make Camden such an attractive place to live, work and visit (see policy CS1). Promoting and protecting high standards of amenity is a key element in this and will be a major consideration when the Council assesses development proposals. Core Strategy policies CS5 – *Managing the impact of growth and development* and CS14 – *Promoting high quality places and conserving our heritage* set out our overall approach to protecting the amenity of Camden's residents, workers and visitors, a major factor in people's quality of life. Policy DP26 contributes to the implementation of the Core Strategy by making sure that the impact of a development on occupiers and neighbours is fully considered.

DP POLICY

DP26 – Managing the impact of development on occupiers and neighbours

The Council will protect the quality of life of occupiers and neighbours by only granting permission for development that does not cause harm to amenity. The factors we will consider include:

- a) visual privacy and overlooking;
- b) overshadowing and outlook;
- c) sunlight, daylight and artificial light levels;
- d) noise and vibration levels;
- e) odour, fumes and dust;
- f) microclimate;
- g) the inclusion of appropriate attenuation measures.

We will also require developments to provide:

- h) an acceptable standard of accommodation in terms of internal arrangements, dwelling and room sizes and amenity space;
- i) facilities for the storage, recycling and disposal of waste;
- j) facilities for bicycle storage; and
- k) outdoor space for private or communal amenity space, wherever practical.

- 26.2 Development should avoid harmful effects on the amenity of existing and future occupiers and to nearby properties. When assessing proposals the Council will take account the considerations set out in policy DP26. The Council's Camden Planning Guidance supplementary document contains detailed guidance on the elements of amenity.

Visual privacy, overlooking, overshadowing, outlook, sunlight and daylight

- 26.3 A development's impact on visual privacy, overlooking, overshadowing, outlook, access to daylight and sunlight and disturbance from artificial light can be influenced by its design and layout, the distance between properties, the vertical levels of onlookers or occupiers and the angle of views. These issues will also affect the amenity of the new occupiers. We will expect that these elements are considered at the design stage of a scheme to prevent potential negative impacts of the development on occupiers and neighbours. To assess whether acceptable levels of daylight and sunlight are available to habitable spaces, the Council will take into account the standards recommended in the British Research Establishment's *Site Layout Planning for Daylight and Sunlight – A Guide to Good Practice (1991)*.

Artificial lighting levels

- 26.4 Lighting creates a sense of safety and can enable activities in the evenings and at night. It can be used to highlight landmark buildings and add vitality to our streets. Lighting can increase the potential for natural surveillance and, where used correctly, can reduce the opportunity for criminal activity and increase the likelihood of it being challenged and/or reported. However, poorly designed internal and external lighting or lighting that operates for an excessive period of time is a form of pollution that can harm the quality of life for those living nearby, affect wildlife and waste energy. Camden's dense character means that light pollution can be a bigger problem in the borough than in lower density areas where uses are not so close together. For example, lighting from conservatories can affect neighbours living above, as well as to the sides and rear, and the lighting of advertisements can affect people living nearby. Glare and light spillage from poorly designed lighting can make it less easy to see things at night and effect wildlife as well as people. Lighting should only illuminate the intended area and not affect or impact on its surroundings. Schemes involving floodlighting and developments in sensitive areas, such as adjacent to sites of nature conservation importance, should employ a specialist lighting engineer accredited by the Institute of Lighting Engineers to ensure that artificial lighting causes minimal disturbance to occupiers and wildlife. For further details on lighting and occupiers and biodiversity please see our Camden Planning Guidance supplementary document.

Noise and vibration

- 26.5 Noise/vibration pollution has a major effect on amenity and health and can be a particularly significant issue in Camden given the borough's dense urban nature. More detail on how to prevent disturbance from noise and vibration, including the requirement for mitigation measures can be found in policy DP28.

Odours, fumes and dust

- 26.6 Camden suffers from extremely poor air quality which has a harmful impact on health and the environment. More detail on how the Council is tackling poor air quality can be found in policy DP32. Camden Planning Guidance provides information on how developments should be designed to prevent occupants from being exposed to air pollution, including mitigation measures.





26.7 Odours, fumes and dust can be generated from commercial cooking, industrial process and construction and demolition. We will require all development likely to generate odours to prevent them from being a nuisance by installing appropriate extraction equipment and other mitigation measures. Further details on mitigation measures and where extraction equipment should be located can be found in Camden Planning Guidance. Further details on limiting noise from extraction equipment can be found in DP28. The Council will limit the disturbance from dust due to construction and demolition by expecting developers and their contractors to follow the London Councils' Best Practise Guidance *The control of dust and emissions from construction and demolition*. We will also expect developers to sign up to the Considerate Constructors Scheme. Details of how these will be implemented should be provided in a Construction Management Plan. Please see below for further details on Construction Management Plans.

Microclimate

26.8 Developments, especially when large, can alter the local climate. For example, a light coloured building that reflects heat will stay cool on the inside and the outside, whereas a dark building will absorb heat during the day to raise internal temperatures and slowly release this heat as the temperature cools, keeping the local air temperature warmer. Buildings can also affect the flow of air and cause wind tunnels. All developments should consider local topography and the local microclimate in their design. Developments large enough to alter the local climate will be required to submit a statement demonstrating how the design has considered local conditions. Detail of what is expected in such a statement can be found in the Camden Planning Guidance.

Attenuation measures and Construction Management Plans

26.9 Most potential negative effects of a development can be designed out or prevented through mitigation measures. For example, appropriately located and insulated extraction equipment can prevent nuisance caused by strong odours and fumes. An air tight building with mechanical ventilation and good insulation can make living adjacent to railways and busy roads acceptable with regards to noise, vibration and internal air quality. We will require any attenuation measures to be identified prior to planning permission being granted and secured for the lifetime of the development.

26.10 Disturbance from development can also occur during the construction phase. Measures required to reduce the impact of demolition, excavation and construction works must be outlined in a Construction Management Plan. We will require Construction Management Plans to identify the potential impacts of the construction phase of the development and state how any potential negative impacts will be mitigated. Construction Management Plans may be sought for:

- major developments;
- basement developments;
- developments involving listed buildings or adjacent to listed buildings;
- developments that could affect wildlife;
- developments on sites with poor or limited access; and
- developments that could cause significant disturbance due to their location or the anticipated length of the, demolition, excavation or construction period.

For further details on construction management plans please refer to our Camden Planning Guidance supplementary. Please see policy DP27 for more on our approach to basements.

Standards of accommodation

26.11 The size of a dwelling and its rooms, as well as its layout, will have an impact on the amenity of its occupiers. Residential standards and guidance are contained in our Camden Planning Guidance supplementary document. Policy DP6 outlines our approach to Lifetime Homes and further detail can be found in Camden Planning Guidance. Details on our approach to providing facilities for waste and for bicycle storage can also be found in Camden Planning Guidance. Details on our requirements for the provision of cycle parking can be found in DP18 – *Parking standards and limiting the availability of car parking*.

26.12 Outdoor amenity space provides an important resource for residents, which is particularly important in Camden given the borough's dense urban environment. It can include private provision such as gardens, courtyards and balconies, as well as communal gardens and roof terraces. The Council will expect the provision of gardens in appropriate developments, and particularly in schemes providing larger homes suitable for families. However, we recognise that in many parts of the borough this will not be realistic or appropriate. In these locations, the provision of alternative outdoor amenity space, for example, balconies, roof gardens or communal space will be expected. These amenity spaces should be designed to limit noise and disturbance of other occupiers and so not to unacceptably reduce the privacy of other occupiers and neighbours.

Key evidence and references

- Air Quality Action Plan 2009-13
- Camden's Noise Strategy, 2002
- Planning Policy Guidance (PPG) 24: Planning and Noise
- The London Plan (consolidated with alterations since 2004); Mayor of London; 2008
- Cleaning London's Air: The Mayor's Air Quality Strategy (2002)
- Souder City – The Mayor's Ambient Noise Strategy; Mayor of London; 2004
- Institution of Lighting Engineers web-site, <http://www.ile.org.uk>