



# ISO 14001 REGISTERED

This document certifies that the environmental management systems of  
**EVERGLADE WINDOWS LIMITED**

22 Wadsworth Road, Perivale, Greenford, Middlesex UB6 7JD

have been assessed and approved by QMS International plc to the  
following environmental management systems, standards and guidelines:-

ISO 14001 : 2004

The approved environmental management systems apply to the following:-  
FABRICATION AND INSTALLATION OF ALUMINIUM AND PVC-U WINDOWS, DOORS,  
CONSERVATORIES AND ALL DOUBLE GLAZED PRODUCTS

Original Approval: 15 July 2005

Current Certificate: 15 July 2015

Certificate Expiry: 14 July 2025

Certificate Number: 14123553

A handwritten signature in black ink, appearing to read 'M. Thomas'.

On behalf of QMS International plc



This Certificate remains valid while the holder  
maintains their management system in accordance with  
the published ISO standard. To check the validity and  
status of this certificate please visit [www.IRQAO.com](http://www.IRQAO.com) or  
email [status@qmsplc.com](mailto:status@qmsplc.com)

*This Certificate is the property of QMS International plc  
and must be returned in the event of cancellation.*

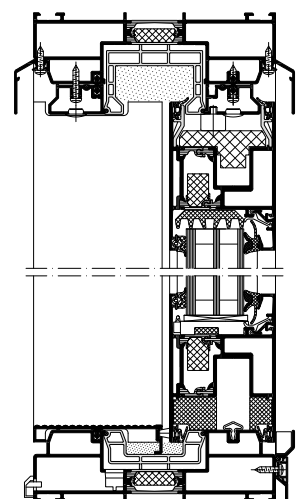
# Schüco ASS 70.HI

Aluminium Hebe-Schiebesystem  
Aluminium lift-and-slide system



Das hochwärmegedämmte Aluminium-Hebeschiebesystem Schüco ASS 70.HI überzeugt mit perfekter Schlagregendichtigkeit, exzellentem Schallschutz und Einbruchhemmung bis RC2 (WK2). Die modular aufgebaute Profildämmung ermöglicht  $U_i$ -Werte ab  $2,0 \text{ W/(m}^2\text{K)}$ , wodurch  $U_w$ -Werte von  $< 1,3 \text{ W/(m}^2\text{K)}$  erreicht werden. Zusammen mit großen Öffnungsweiten und hohem Bedienkomfort bietet Schüco ASS 70.HI neue Systemlösungen für den Objektbereich und gehobenen Wohnbau.

The highly thermally insulated aluminium lift-and-slide system Schüco ASS 70.HI with its perfect watertightness, excellent sound reduction and burglar resistance up to RC2 (WK2) is second to none. The modular profile insulation allows  $U_i$  values from  $2.0 \text{ W/(m}^2\text{K)}$ , whereby  $U_w$  values of  $< 1.3 \text{ W/(m}^2\text{K)}$  are achieved. With large opening widths and easy operation, Schüco ASS 70.HI offers new system solutions for large projects and luxury homes.



Schüco ASS 70.HI, Maßstab 1:5  
Schüco ASS 70.HI, scale 1:5

# Schüco ASS 70.HI

Aluminium Hebe-Schiebesystem

Aluminium lift-and-slide system



Schüco Hebe-Schiebesystem ASS 70.HI  
Schüco lift-and-slide system ASS 70.HI

## Schüco ASS 70.HI

### Produktvorteile

- Optimiertes Entwässerungssystem mit Schlagregendichtheit bis zu 1.050 Pa
- Flügengewicht bis 400 kg
- Hochwertige Beschlagteile für komfortable Bedienung
- Hohe Transparenz durch große Flügelgrößen bis zu 9 m², je nach Ausführung
- Schalldämmung gemäß DIN EN ISO 140-03 und DIN EN ISO 717-1,  $R_w \leq 44$  dB
- Glasstärken bis 52 mm
- Große Farbvielfalt, außen andersfarbig als innen

### Product benefits

- Excellent drainage system with watertightness up to 1,050 Pa
- Vent weight up to 400 kg
- High-quality fittings components for easy operation
- High degree of transparency due to large vent sizes of up to 9 m², depending on the design
- Sound insulation in accordance with DIN EN ISO 140-03 and DIN EN ISO 717-1,  $R_w \leq 44$  dB
- Glass thickness up to 52 mm
- Wide choice of colours – different colours inside and outside



### Verarbeitungsvorteile

- Hohe Flexibilität im Objektgeschäft durch Profil-Kundenverbund

### Fabrication benefits

- Greater flexibility due to option for customer to roll profiles together

### Technische Daten Technical data

### Wert Value

Wärmedämmung Thermal insulation	$U_w$ ab 1,3 W/(m²K) $U_w$ from 1,3 W/(m²K)
Flügelrahmen-Bautiefe Basic depth of vent frame	70 mm
Flügelmaße (BxH) Vent size (WxH)	3.000 x 3.000 mm
Flügelgewicht Vent weight	400 kg
Widerstandsklasse Security class	RC2 (WK2)
Anzahl der Laufschielen Number of tracks	1 – 3

Schüco International KG  
www.schueco.com

**SCHÜCO**

Schueco UK Ltd  
Whitehall Avenue  
Milton Keynes  
MK10 0AL

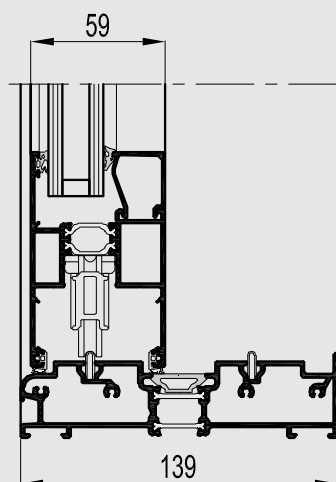
Tel: 01908 282111  
E mail: mkinfobox@schueco.com  
Web: www.schueco.co.uk



# CP 130

Aesthetic functionality

**REYNAERS**  
aluminium



Concept Patio® 130 is a highly insulated slide and lift-slide system, which meets the highest requirements with regard to insulation, stability and safety.

CP 130 is available with various opening possibilities. The low threshold option offers a solution to improve the buildings accessibility. A special corner solution makes it possible to open up spaces without any fixed corner element, creating a perfect and clear continuity between the indoor and outdoor spaces. This makes CP 130 ideal for rooms with a view.

This robust system allows the construction of large and stable sliding windows and doors with a vent weight up to 300 kg. It also offers an aesthetical slimline middle section. Additionally, CP 130 can comply with burglar resistance class 2, offering a safe and secure solution.





## INTERIOR & EXTERIOR BECOME ONE

A sliding door opens up a multitude of possibilities. Through a sliding door, the garden is incorporated into the interior of the house, fading the interior-, exterior border. This creates an extra feeling of space and generates more natural light within the home.

## CP 130 SLIDE AND CP 130 LIFT & SLIDE

All types of CP 130 sliding doors use durable wheels and stainless steel rails, for optimal opening comfort. In case of a lift & slide system, the sliding door will be lifted up before sliding across this rail. In the closed position, the lift & slide door is put down and anchored, which is an extra plus for insulation and theft prevention. Both systems are wind-, waterproof and hermetically sealed.

## MONORAIL, DUO RAIL, 3-RAIL OR MULTI-RAIL

A **monorail** combines a moving part with a fixed glazed element, anchored directly into the outer frame profile, creating a minimalistic look. As a standard, this solid part is at the inside of the sliding door. For specific situations however, a solution is offered for CP 130 to install the fixed part at the outside of the sliding door. This can be very convenient when large fixed glass panes need to be installed at elevated height or when building construction does not allow inside glazing.

MONORAIL	CP 130	CP 130-LS
	X	X
	X	

A **duo rail** integrates 2 glazed opening vents, which have an identical look resulting in an aesthetic sliding door. Both vents can be made as sliding element, giving all flexibility to the users.

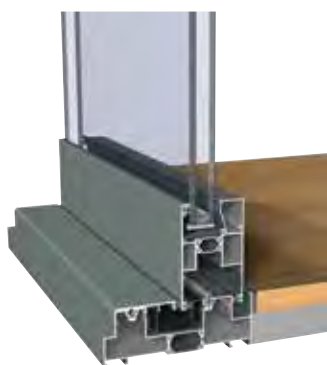
DUO RAIL	CP 130	CP 130-LS
	X	X

A **3-rail** integrates an extra rail in the outer frame allowing a third opening vent to be installed. This solution is very interesting because this allows the user to open-up 2 sliding doors, creating an opening which is doubled in size.

3-RAIL	CP 130	CP 130-LS
	X	X

Even more flexibility is obtained with the unique principle of a multi-rail, available in the lift-and-slide variant. This multi-rail solution allows an expansion of outer frames from two to up to eight rails, facilitating creative designs with very large openings.

TECHNICAL CHARACTERISTICS			
Variants		CP 130 MONORAIL, DUO RAIL, 3-RAIL	CP 130-LS MONORAIL, DUO RAIL, 3-RAIL, MULTI-RAIL
Visible width / height	Frame / Threshold	50 mm / 28 mm	20 mm / 28 mm / 35 mm / 40mm
	Vent	94 mm	94 mm
	T-profile	from 76 mm till 154 mm	from 76 mm till 154 mm
	Meeting section	69 mm / 98 mm	69 mm / 98 mm
	Meeting section 4 doors	194 mm	194 mm
Overall system depth	Frame	Monorail : 130 mm Duo Rail : 110 mm / 130 mm / 139 mm 3-Rail : 181 mm / 210 mm	Monorail : 139 mm Duo Rail : 139 mm 3-Rail : 210 mm
	Vent	59 mm	59 mm
Maximal Element height		2700 mm	2700 mm
Maximal vent weight		300 kg	300 kg
Rebate height		25 mm	25 mm
Glass thickness		up to 43 mm	up to 43 mm
Glazing method		dry glazing with EPDM or neutral silicones	dry glazing with EPDM or neutral silicones
Thermal insulation		23 mm, 18.6 mm and 32 mm fibreglass reinforced polyamide strips	23 mm and 32 mm fibreglass reinforced polyamide strips
HI variant		extra insulation gaskets	extra insulation gaskets









Flush floor integration



CP 130 Monorail Outside glazing



CP 130-LS 3-rail Low threshold

PERFORMANCES												
	ENERGY											
	Thermal Insulation <sup>(1)</sup> EN ISO 10077-2	Uf-value down to 2.35 W/m²K (*), depending on the frame/vent combination.										
	COMFORT											
	Acoustic performance <sup>(2)</sup> EN ISO 140-3; EN ISO 717-1	Rw (C; Ctr) = 35 (-2;-6) dB / 39 (-1;-3) dB, depending on glazing type										
	Air tightness, max. test pressure <sup>(3)</sup> EN 12207	1 (150 Pa)		2 (300 Pa)		3 (600 Pa)		4 (600 Pa)				
	Water tightness <sup>(4)</sup> EN 12208	1A (0 Pa)	2A (50 Pa)	3A (100 Pa)	4A (150 Pa)	5A (200 Pa)	6A (250 Pa)	7A (300 Pa)	8A (450 Pa)	9A (600 Pa)	E750 (750 Pa)	
	Wind load resistance, max. test pressure <sup>(5)</sup> EN 12211; EN 12210	1 (400 Pa)		2 (800 Pa)		3 (1200 Pa)		4 (1600 Pa)		5 (2000 Pa)		Exxx (> 2000 Pa)
	Wind load resistance to frontal deflection EN 12211; EN 12210	A (≤ 1/150)				B (≤ 1/200)			C (≤ 1/300)			
	SAFETY											
	Burglar resistance <sup>(6)</sup> EN(V) 1627 - 1630	RC 1			RC 2			RC 3				

This table shows classes and values of performances, which can be achieved for specific configurations and opening types.

- (1) The Uf-value measures the heat flow. The lower the Uf-value, the better the thermal insulation of the frame.
- (2) The sound reduction index (Rw) measures the capacity of the sound reduction performance of the frame and glass.
- (3) The air tightness test measures the volume of air that would pass through a closed window at a certain air pressure.
- (4) The water tightness testing involves applying a uniform water spray at increasing air pressure until water penetrates the window. Depending on the bottom solution, different values are achieved.
- (5) The wind load resistance is a measure of the profile's structural strength and is tested by applying increasing levels of air pressure to simulate the wind force.
- (6) The burglar resistance is tested by static and dynamic loads, as well as by simulated attempts to break in using specified tools. This variant requires specific burglar resistance accessories.

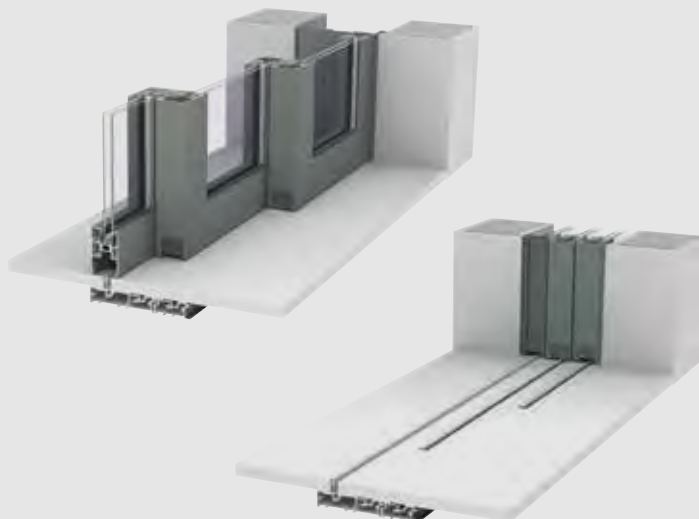
(\*) Value for HI-variant



## TOGETHER FOR BETTER

### THE POCKET OPTION

The modular pocket solution provides for up to eight vents to be slid into your wall, thereby creating an open space without visible elements when the window is open. Optimal flush aesthetics in the open position can be realized by applying the same colour as the wall to the finishing profile. The pocket solution is available for the lift & slide systems in duo rail, 3-rail, or up to 8-rail (multi-rail) compositions.



### CP 130-LS CORNER

A newly-developed corner solution, exclusively for the CP 130-LS duo rail variant, makes it possible to open up spaces without any fixed corner element.

This innovation is an answer to the current architectural need for large glass surfaces with minimal visible elements. The corner solution creates a perfect opportunity to invite nature into your home, removing the indoor and outdoor boundaries.

