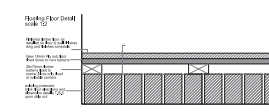


GF Wall and Floor Finishes Plan  
Scale 1:50

FLOORING FINISHES LEGEND	Code
New GF Timber Flooring (L&R in direction of layout) Ref to Finishes Schedule 112.3 sqm	F1
OMITTED	F2
New GF Oil Entrance Mat Ref to Finishes Schedule 13.8 sqm	F3
New (BOM) Altro Flooring Ref to Finishes Schedule 35.1 sqm	F4
New GF Hardtophone 3mm floor Ref to Finishes Schedule 39 sqm	F5
OMITTED	F6
New FF Timber Flooring (L&R in direction of layout) Ref to Finishes Schedule 104.0 sqm	F7
OMITTED	F8
New FF floor tile to FF WC Ref to Finishes Schedule 6.9 sqm	F9
New FF Grease Mat Ref to Finishes Schedule 1.1 sqm	F10
TO MATCH EXIST KITCHEN FLOOR FINISH 3.5 SQM	F11

Code	WALL FINISHES LEGEND	Code	WALL FINISHES LEGEND
W1	New Back Bar Tile Ref to schedule	W11	Dark grey paint Ref to schedule
W2	Copper capping, steel clad stud wall. Ref to schedule	W12	New table top to match existing bricks in effect. Ref to schedule
W3	Retain wall as existing. Repair where necessary, sand down any existing latex paintwork. Restore to original finish. Ref to schedule	W13	Whitewash Ref to schedule
W4	Red stained scaffold board cladding. Ref to schedule	W14	Wall Foliage - Living wall. Ref to schedule
W5	New paint finish - brilliant white. Ref to schedule	W15	Paint to plastered walls above tiles Ref to schedule
W6	Back Bar wall Tile Ref to schedule	W16	Scrub down to restore original state of column
W7	Feature Mirror Clad. Ref to schedule	C1	Paint to plastered FF Ceiling only. Timber ceiling and trusses to be as collected in situ.
W8	Table wall tile. Ref to schedule		
W9	Paint finish - Dulux Trade Ref. 30GG 00143 Ref to schedule		
W10	Kitchen back wall feature tile. Ref to schedule		



Floor areas do NOT include a contingency, contractor to decide on contingency required.

To be read in conjunction with KEANE finishes schedule for specific details of type, finish and supplier information

All ground floor timber to be replaced and set on battens to protect existing listed flooring

- NOTES:-
- All drawings to be read in conjunction with Structural Engineer's details & any relevant sub-contractor's details. All works to comply with current Building Regulations, British Standards & Codes of Practice.
  - All dimensions to be checked on site prior to any works commencing.
  - Contractor to ensure that all work meets the requirements of the EHO, Building Control, Fire Authority and all other statutory bodies.

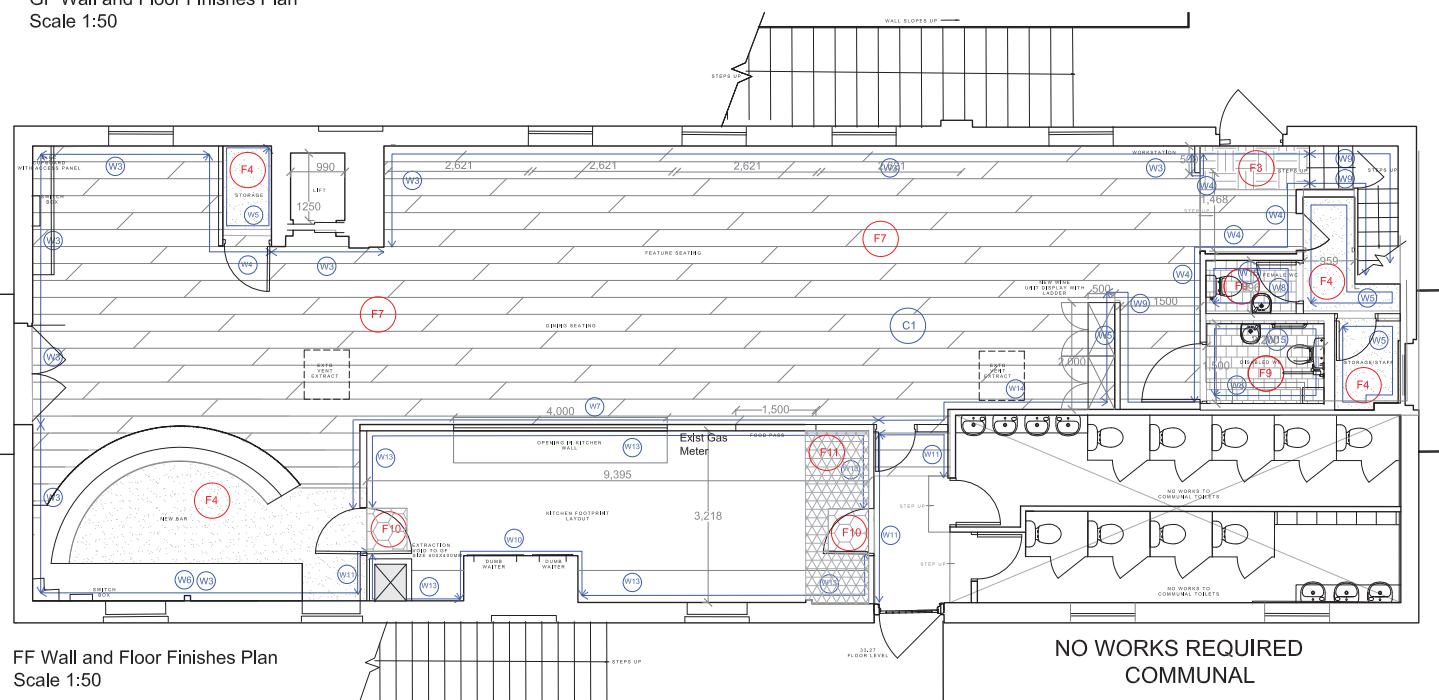
REV	BY	DATE	DESCRIPTION
A	GB	24/01	overall floor and wall amendments

# KEANE.

CLIENT: TRIANGLE RESTAURANTS  
PROJECT: LONG STABLES, CAMDEN  
DRG NAME: GF & FF FLOOR & WALL FINISHES  
SCALE: 1:50 @ A1  
DATE: DEC 2016  
JOB#: 13000  
DWG#: 017a  
STATUS: For Approval  
CONTACT: gupi.bansal@keanebrands.com

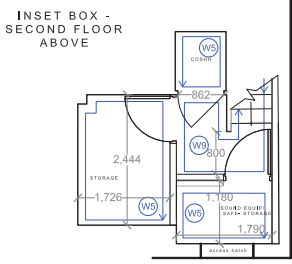
Drawings based on conditions as shown. It is not accepted in whole or part without consent. Figured dimensions take precedence over scaled. All dimensions to be checked on site prior to commencement of any work or shop drawings. To be read in conjunction with specification where relevant.

©KEANE 2016 KEANEBRANDS.COM



FF Wall and Floor Finishes Plan  
Scale 1:50

NO WORKS REQUIRED COMMUNAL



**Electrical Legend**

- Printer Point
- Tili
- Telephone
- PDD Point
- Fused spur connection
- 13amp single switch socket outlet with 2no. USB ports.
- 13amp recessed floor box quad socket outlet.
- 13amp twin switch socket outlet.
- 13amp MK - K2948 MCO Matt Chrome finish, with usb ports where noted
- External power socket outlet.

**32amp Single phase Isolator.**  
 Ref: MK - Matt Chrome finish,  
 External power socket outlet, Ref TBC by  
 electrical contractor

**Dual Data Point for TVs**

**Hand Drier - Refer to sanitary schedule**

**Disabled Alarm Panel**

**Control Panel - music, lighting, heating & A/C**

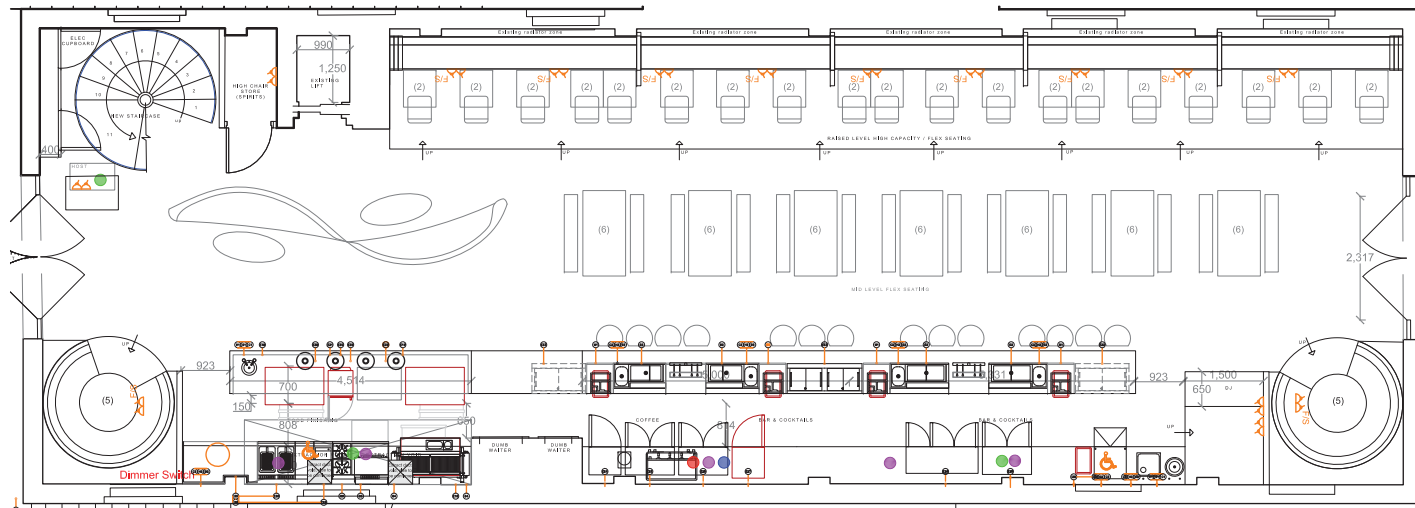
**Disabled WC alarm cord, Indicator light to be visible behind bar counter**

**N.B.**  
**Locations Shown are Indicative. Kitchen Specialist to Liaise with Main Contractor and Specialist Sub-Contractors on Numbers and Exact Locations of Power Requirements for Kitchen/B.O.H. Areas.**

**SERVICES SCHEDULE**

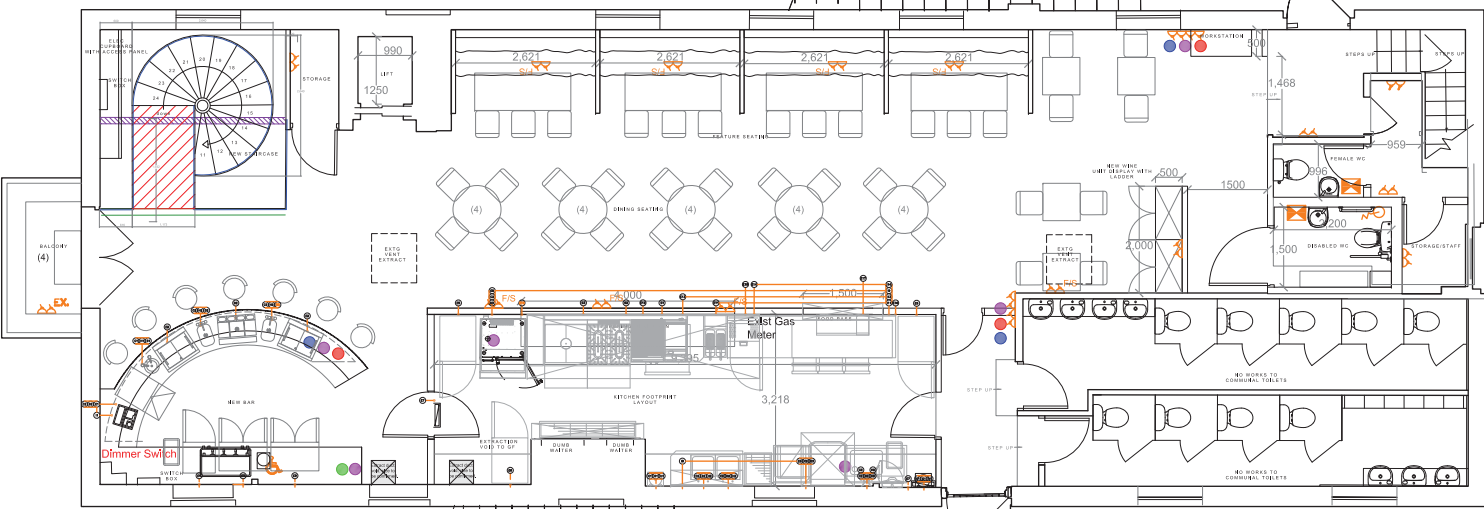
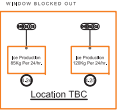
- ELECTRICAL**
- E1 SINGLE PHASE CABLE OUTLET WITH A 6.5amp SUPPLY @ 450mm AFFL VIA ISOLATOR F1 @ 1200mm AFFL FOR ITEM 2.11 (UNDERCOUNTER GLASSWASHER)
  - E2 SINGLE SWITCHED SOCKET OUTLET @ 450mm AFFL WITH A 2.0amp SUPPLY FOR ITEM 2.28 (SLIDE TOP BOTTLE COOLER)
  - E3 SINGLE SWITCHED SOCKET OUTLET @ 450mm AFFL WITH A 2.0amp SUPPLY FOR ITEM 2.28 (BOTTLE COOLER)
  - E4 SINGLE SWITCHED SOCKET OUTLET @ 450mm AFFL WITH A 2.0amp SUPPLY FOR ITEM 2.28 (UNDERCOUNTER REFRIGERATOR)
  - E5 SINGLE SWITCHED SOCKET OUTLET @ 2100mm AFFL WITH A 16amp SUPPLY FOR ITEM 1.02 (UPRIGHT REFRIGERATOR)
  - E6 SINGLE SWITCHED SOCKET OUTLET @ 2100mm AFFL WITH A 10amp SUPPLY FOR ITEM 1.03 (UPRIGHT FREEZER)
  - E7 SINGLE SWITCHED SOCKET OUTLET @ 2100mm AFFL WITH A 2.0amp SUPPLY FOR ITEM 1.03 (FREEZER)
  - E8 THREE PHASE CABLE OUTLET WITH A 3.0amp SUPPLY @ 450mm AFFL VIA ISOLATOR F1 @ 1200mm AFFL FOR ITEM 1.27 (PASS-THROUGH DISHWASHER)
  - E9 THREE PHASE COMMANDO PLUG & SOCKET OUTLET WITH A 16.0amp SUPPLY @ 450mm AFFL VIA ISOLATOR F1 @ 1500mm AFFL FOR ITEM 1.03 (DIP COORDINATION UNIT)
  - E10 SINGLE SWITCHED CABLE OUTLET @ 2100mm AFFL WITH A 6.5amp SUPPLY FOR ITEM 1.04 (SOLVENT)
  - E11 THREE PHASE COMMANDO PLUG & SOCKET OUTLET WITH A 6.5amp SUPPLY @ 450mm AFFL VIA ISOLATOR F1 @ 1500mm AFFL FOR ITEM 1.03 (DIP COORDINATION UNIT)
  - E12 SINGLE SWITCHED SOCKET OUTLET @ 450mm AFFL WITH A 2.0amp SUPPLY FOR ITEM 1.10 (FLEX-TEMP COUNTER)
  - E13 SINGLE PHASE CABLE OUTLET WITH A 6.5amp SUPPLY @ 450mm AFFL VIA ISOLATOR F1 @ 1500mm AFFL FOR ITEM 1.10 (FLEX-TEMP COUNTER)
  - E14 SINGLE PHASE CABLE OUTLET WITH A 2.0amp SUPPLY @ 1200mm AFFL VIA ISOLATOR F1 @ 1500mm AFFL FOR ITEM 1.04 (SALAMANDER GRILL)
  - E15 SINGLE SWITCHED SOCKET OUTLET @ 450mm AFFL WITH A 2.0amp SUPPLY FOR ITEM 1.10 (REFRIGERATED COUNTER)
  - E16 SINGLE SWITCHED SOCKET OUTLET @ 1200mm AFFL WITH A 10amp SUPPLY FOR ITEM 1.11 (REFRIGERATED COUNTER)
  - E17 SINGLE SWITCHED SOCKET OUTLET @ 450mm AFFL WITH A 2.0amp SUPPLY FOR ITEM 1.07 (REFRIGERATED COUNTER)
  - E18 SINGLE SWITCHED SOCKET OUTLET @ 450mm AFFL WITH A 2.0amp SUPPLY FOR ITEM 1.07 (REFRIGERATED COUNTER)
  - E19 SINGLE SWITCHED SOCKET OUTLET @ 450mm AFFL WITH A 5.0amp SUPPLY FOR ITEM 3.17 (FLEX-TEMP COUNTER)
  - E20 SINGLE SWITCHED SOCKET OUTLET @ 450mm AFFL WITH A 5.0amp SUPPLY FOR ITEM 3.17 (FLEX-TEMP COUNTER)
  - E21 SINGLE SWITCHED SOCKET OUTLET @ 450mm AFFL WITH A 5.0amp SUPPLY FOR ITEM 3.17 (FLEX-TEMP COUNTER)
  - E22 SINGLE SWITCHED SOCKET OUTLET @ 450mm AFFL WITH A 5.0amp SUPPLY FOR ITEM 3.14 (HOT HOLDING UNIT)
  - E23 SINGLE SWITCHED SOCKET OUTLET @ 450mm AFFL WITH A 5.0amp SUPPLY FOR ITEM 3.13 (MICROWAVE OVEN)
  - E24 SINGLE SWITCHED SOCKET OUTLET @ 450mm AFFL WITH A 2.0amp SUPPLY FOR ITEM 4.01 (SLIDE TOP BOTTLE COOLER)
  - E25 SINGLE SWITCHED SOCKET OUTLET @ 450mm AFFL WITH A 2.0amp SUPPLY FOR ITEM 4.01 (SLIDE TOP BOTTLE COOLER)
  - E26 SINGLE SWITCHED SOCKET OUTLET @ 450mm AFFL WITH A 2.0amp SUPPLY FOR ITEM 4.01 (SLIDE TOP BOTTLE COOLER)
  - E27 SINGLE SWITCHED SOCKET OUTLET @ 450mm AFFL WITH A 2.0amp SUPPLY FOR ITEM 4.07 (BOTTLE COOLER)
  - E28 SINGLE SWITCHED SOCKET OUTLET @ 450mm AFFL WITH A 2.0amp SUPPLY FOR ITEM 4.08 (BOTTLE COOLER)
  - E29 SINGLE SWITCHED SOCKET OUTLET @ 450mm AFFL WITH A 2.0amp SUPPLY FOR ITEM 4.08 (BOTTLE COOLER)

- E27 SINGLE SWITCHED SOCKET OUTLET @ 450mm AFFL WITH A 2.0amp SUPPLY FOR ITEM 4.10 (UNDERCOUNTER REFRIGERATOR)
  - E28 SINGLE PHASE CABLE OUTLET WITH A 6.5amp SUPPLY @ 450mm AFFL VIA ISOLATOR F1 @ 1200mm AFFL FOR ITEM 4.10 (UNDERCOUNTER REFRIGERATOR)
  - E29 THREE PHASE CABLE OUTLET WITH A 3.0amp SUPPLY @ 450mm AFFL VIA ISOLATOR F1 @ 1200mm AFFL FOR ITEM 3.05 (GRIDDLE)
  - E30 THREE PHASE CABLE OUTLET WITH A 16.0amp SUPPLY @ 450mm AFFL VIA ISOLATOR F1 @ 1200mm AFFL FOR ITEM 3.09 (PIT FRYER)
  - E31 SINGLE SWITCHED SOCKET OUTLET @ 450mm AFFL WITH A 6.0amp SUPPLY FOR ITEM 4.24 & 4.25 (ICE MACHINES)
- COLD WATER**
- C1 15mm COLD WATER SUPPLY @ 300mm AFFL TERMINATING WITH AN UPWARD BALL-AFFL VALVE
  - C2 22mm COLD WATER SUPPLY @ 300mm AFFL TERMINATING WITH AN UPWARD BALL-AFFL VALVE
- HOT WATER POINT**
- H1 15mm HOT WATER SUPPLY @ 300mm AFFL TERMINATING WITH AN UPWARD BALL-AFFL VALVE
  - H2 22mm HOT WATER SUPPLY @ 300mm AFFL TERMINATING WITH AN UPWARD BALL-AFFL VALVE
- WASTE**
- D1 35mm WASTE OUTLET @ 300mm AFFL TERMINATING WITH AN VERTICAL STUB
  - D2 42mm WASTE OUTLET @ 300mm AFFL TERMINATING WITH AN VERTICAL STUB
  - D3 50mm WASTE OUTLET @ 300mm AFFL TERMINATING WITH AN VERTICAL STUB
- GAS POINT**
- G1 17.2kW GAS SUPPLY TERMINATING WITH A DOWN TURNED 3/4" GAS COCK @ 800mm AFFL FOR ITEM 1.09 (CHARG GRILL)
  - G2 45.9kW GAS SUPPLY TERMINATING WITH A DOWN TURNED 3/4" GAS COCK @ 800mm AFFL FOR ITEM 1.07 (FOUR BURNER OVEN RANGES)
  - G3 18kW GAS SUPPLY TERMINATING WITH A DOWN TURNED 3/4" GAS COCK @ 800mm AFFL FOR ITEM 1.06 (ISLAND TOP OVEN RANGE)
  - G4 25.9kW GAS SUPPLY TERMINATING WITH A DOWN TURNED 3/4" GAS COCK @ 800mm AFFL FOR ITEM 3.04 (SALAMANDER GRILL)
  - G5 5.0kW GAS SUPPLY TERMINATING WITH A DOWN TURNED 3/4" GAS COCK @ 800mm AFFL FOR ITEM 3.04 (SALAMANDER GRILL)
  - G6 28.9kW GAS SUPPLY TERMINATING WITH A DOWN TURNED 3/4" GAS COCK @ 800mm AFFL FOR ITEM 3.02 (ISLAND TOP OVEN RANGE)
- MISC**
- M1 ITEM OF EQUIPMENT BY OTHERS - ENQUIRE TO UNIT PROVIDER TO DETERMINE SERVICES REQUIRED

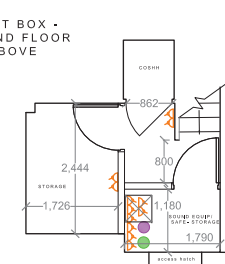


**GF Wall and Floor Finishes Plan**  
 Scale 1:50

**FOR FULL BAR SMALL POWER REQUIREMENT SEE BAR CONTRACTORS DWGS. CONTRACTORS TO INDICATE LOCATIONS**



**FF Wall and Floor finishes Plan**  
 Scale 1:50



**INSET BOX - SECOND FLOOR ABOVE**

**NOTES:-**

1. All drawings to be read in conjunction with Structural Engineer's details & any relevant sub-contractor's details. All works to comply with current Building Regulations, British Standards & Codes of Practice.
2. All dimensions to be checked on site prior to any works commencing.
3. Contractor to ensure that all work meets the requirements of the EHO, Building Control, Fire Authority and all other statutory bodies.

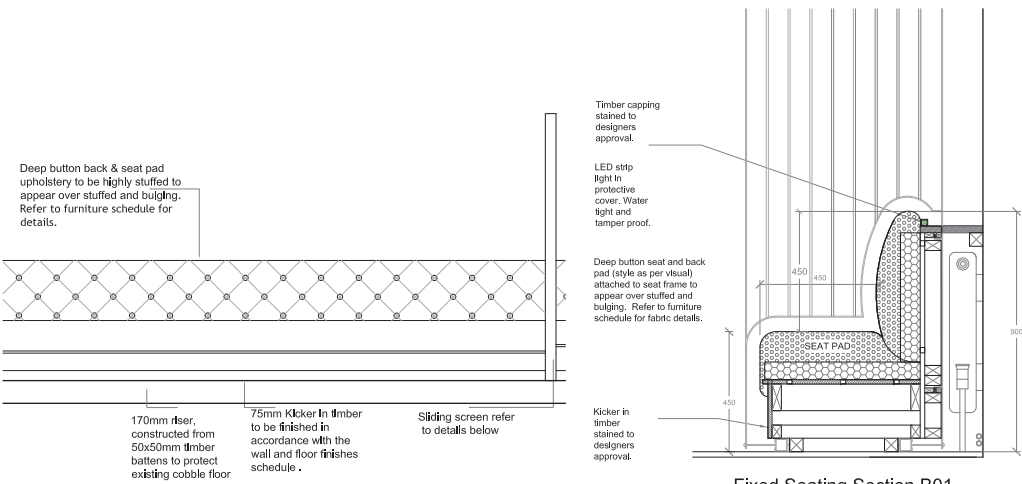
REV	BY	DATE	DESCRIPTION

# KEANE.

<b>CLIENT</b>	<b>TRIANGLE RESTAURANTS</b>
<b>PROJECT</b>	<b>LONG STABLES, CAMDEN</b>
<b>DRG NAME</b>	<b>GF &amp; FF SMALL POWER</b>
<b>SCALE</b>	<b>1:50 @ A1</b>
<b>DATE</b>	<b>DEC 2016</b>
<b>JOB#</b>	<b>13000</b>
<b>DWG#</b>	<b>018</b>
<b>STATUS</b>	<b>For Approval</b>
<b>CONTACT</b>	<b>gupta.bansal@keanebrands.com</b>

Drawing issued on condition that it is not copied in whole or part without consent. Figure dimensions take precedence over scaled. All dimensions to be checked on site prior to commencement of any work or shop drawings. To be read in conjunction with specification where relevant.

© KEANE 2016 KEANEBRANDS.COM

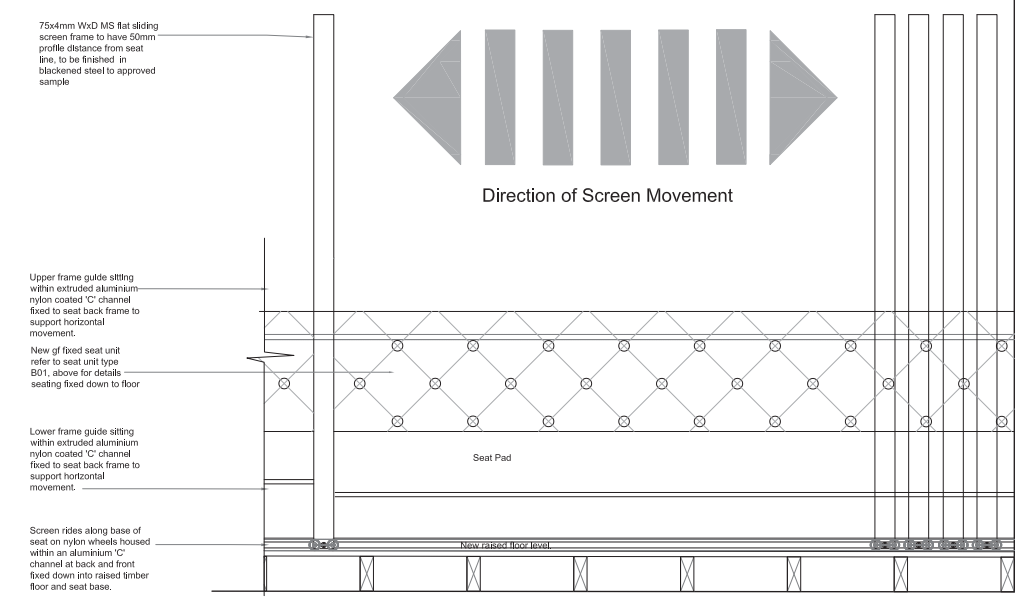


Fixed Seating Part Elevation - B01  
Scale 1:20

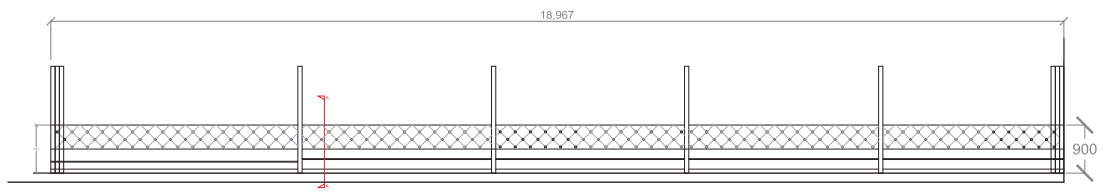
Fixed Seating Section B01  
Scale 1:10



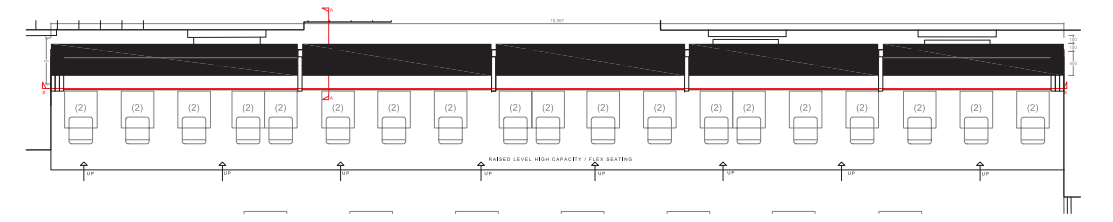
LOCATION PLAN  
SCALE 1:100



Screen Front Elevation  
Scale 1:10



Fixed Seating Elevation - B01  
Scale 1:50



Fixed Seating Plan - B01  
Scale 1:50



SEAT TYPE VISUALS

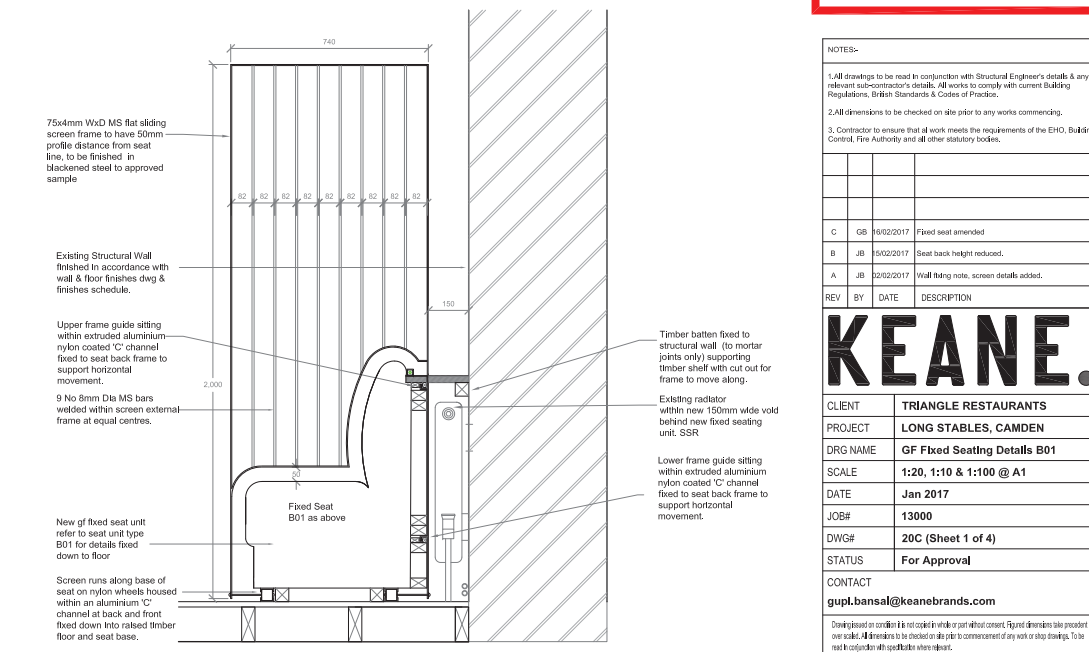


SEAT TYPE VISUALS

All Fit Out decoration to achieve Class 'O' surface spread of flame' in accordance with BS476, Part 7, 1971 or 1987.

**NOTE:**  
All wall fixings to be to mortar joints only.

**ALL DIMENSIONS TBC ON SITE PRIOR TO CONSTRUCTION & INSTALLATION**



Screen Elevation AA  
Scale 1:10

REV	BY	DATE	DESCRIPTION
C	GB	16/02/2017	Fixed seat amended
B	JB	15/02/2017	Seat back height reduced.
A	JB	02/02/2017	Wall fixing note, screen details added.

**KEANE.**

CLIENT	TRIANGLE RESTAURANTS
PROJECT	LONG STABLES, CAMDEN
DRG NAME	GF Fixed Seating Details B01
SCALE	1:20, 1:10 & 1:100 @ A1
DATE	Jan 2017
JOB#	13000
DWG#	20C (Sheet 1 of 4)
STATUS	For Approval
CONTACT	gupti.bansal@keanebrands.com

© KEANE 2016 KEANEBRANDS.COM