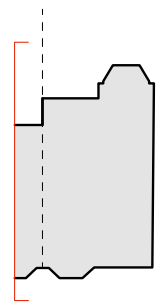
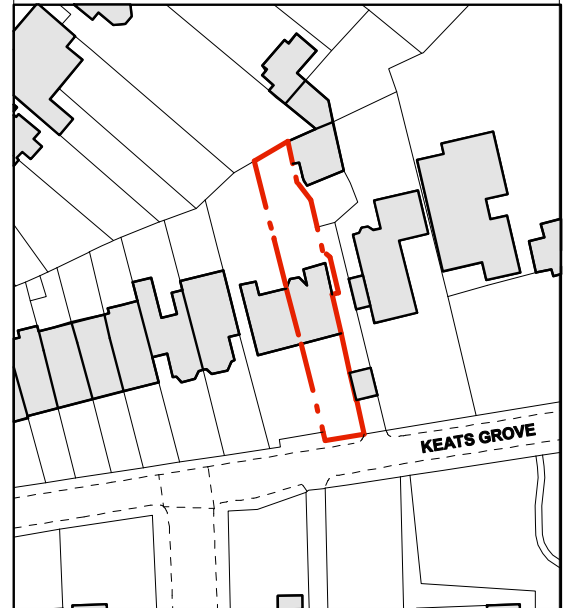
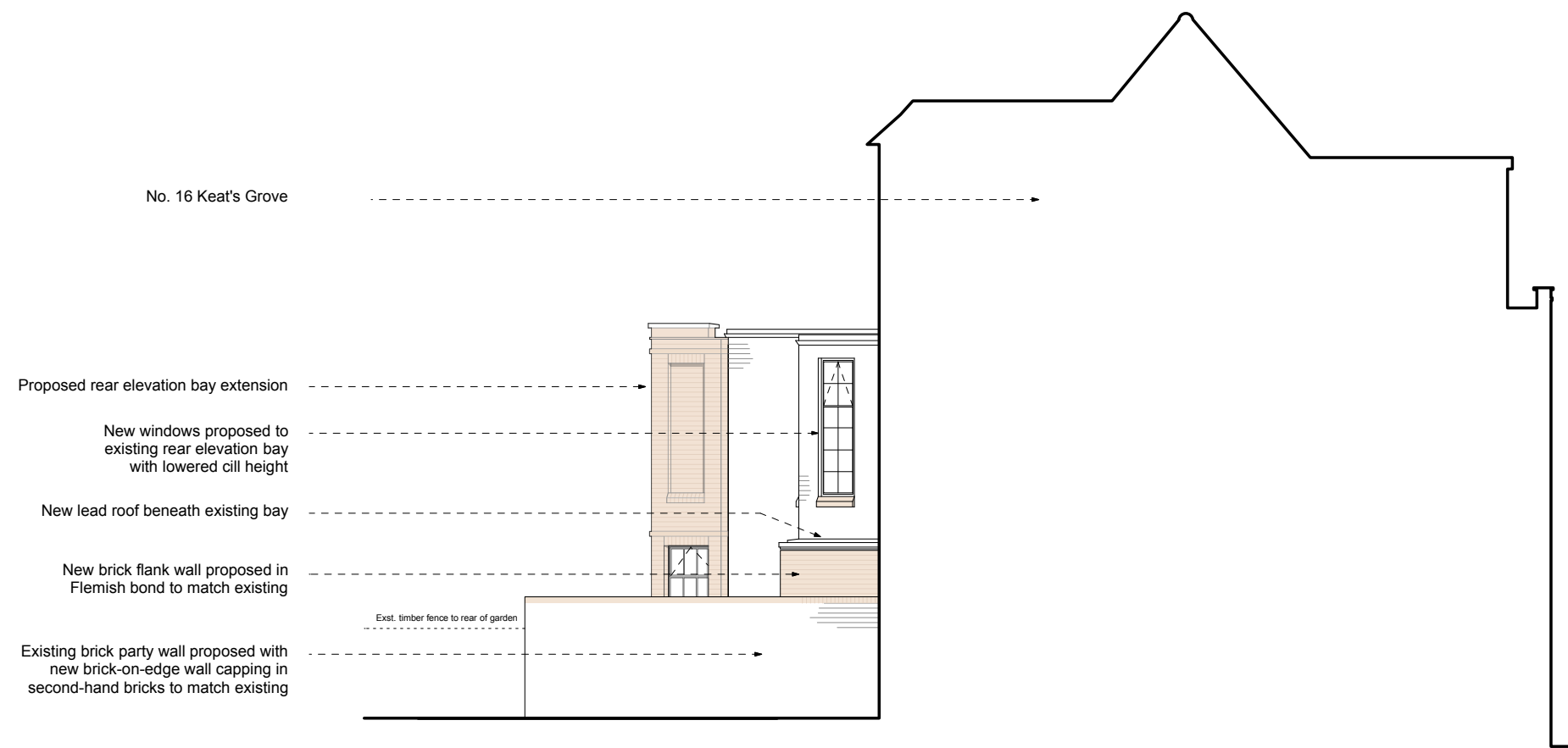


**General Notes**

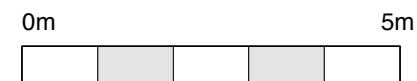
All dimensions to be verified on site  
To be read in conjunction with all relevant documents  
In the event of discrepancy notify the Architect immediately  
This document is copyright of Hugh Cullum Architects Ltd

**Issue Status**

SK	Sketch	E	Existing Condition
D	Design	P	Permissions
T	Tender	C	Contract



(A): Revised blank window proportions (04.05.16/OA)  
(\_): Issued for Planning Application (24.02.16/GW)  
Revision: Information (date/drawn by/checked by)



**AS PROPOSED** \_ Side Elevation From No. 16 Keat's Grove

**HUGH CULLUM**  
ARCHITECTS LTD  
Bloomsbury Design  
61b Judd Street  
London WC1H 9QT  
t 020 7383 7647  
f 020 7387 7645  
mail@hughcullum.com

**15 Keats Grove**  
Proposed  
Side Elevation from No. 16  
1:100@A3 February 2016  
**KG015-P108(A)**