



UCL

Bloomsbury Campus:
Social learning space pavilion

Design and Access Statement

March 2017

Nicholas Hare **Architects**



The pavilion structure currently installed on the Japanese Garden

UCL Bloomsbury campus

Social learning space pavilion

Design and Access Statement

Introduction

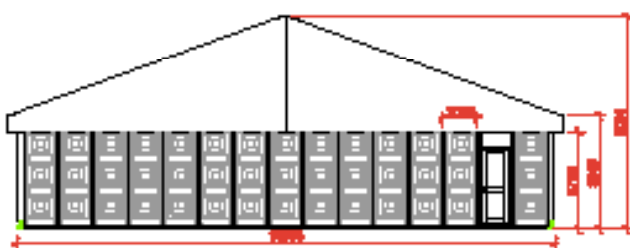
This Design and Access Statement accompanies a Planning Application submitted by UCL for the relocation and modification of the social learning space pavilion structure currently installed in the Japanese Garden.

UCL has an ongoing and significant shortage of available space, both bookable space for events as well as study space for students, shortages which are being addressed through current and planned Transforming UCL projects. These projects include (but are not limited to) the Wilkins Lower Refectory project and the New Student Centre, both of which are currently on site. The pavilion structure on the Japanese Garden has helped to alleviate some of these current space pressures.

Project Brief

The pavilion on the Japanese Garden will be removed in early April 2017 to facilitate safe construction space for the New Student Centre. However, UCL continue to need to provide the space afforded by the structure: the Wilkins Lower Refectory remains closed for refurbishment; the Jeremy Bentham Room, formerly used by students each day as study and social learning space, continues to be used as temporary refectory space; and the completion of the New Student Centre – which will bring a significant increase in space for studying and space for events - is not expected until early 2019.

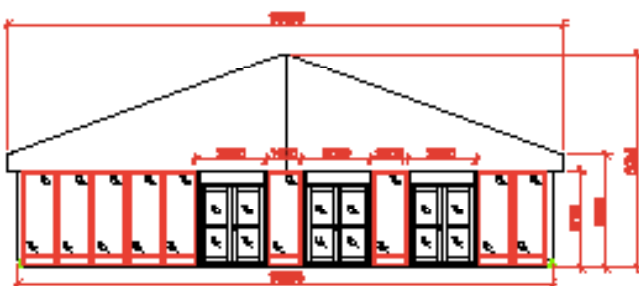
UCL is seeking consent to install this temporary structure for a period of 3 years, with the specific intention that it is removed once the New Student Centre is operational.



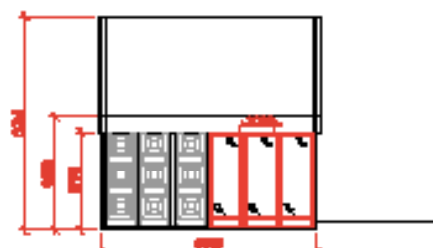
Japanese Garden Structure - Modified Configuration
Elevation 01 - East



Japanese Garden Structure - Modified Configuration
Elevation 02 - West

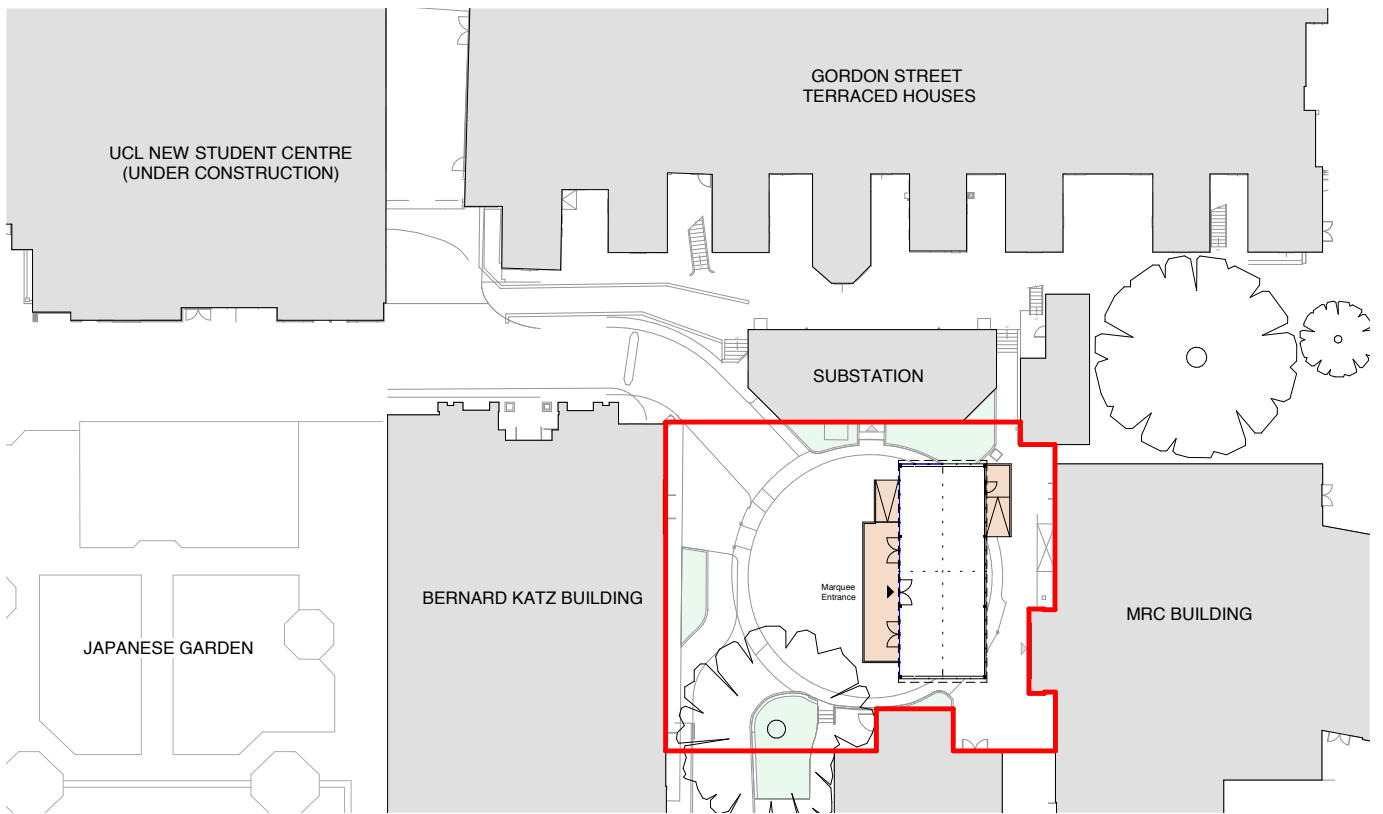


Japanese Garden Structure - Modified Configuration
Elevation 03 - Front

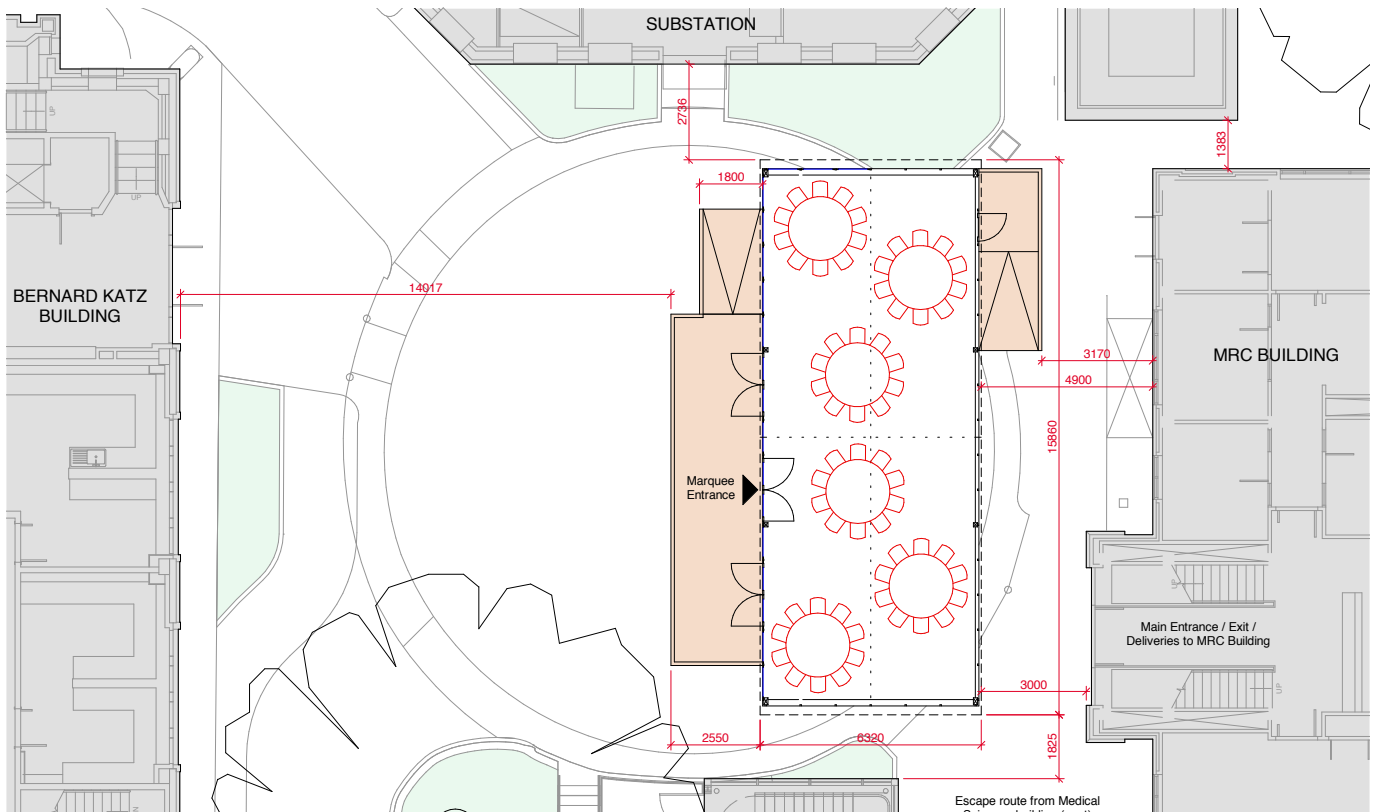


Japanese Garden Structure - Modified Configuration
Elevation 04 - East

Proposed elevations of pavilion structure



Location plan



Proposed plan of relocated pavilion

Use

The pavilion will be used for social study and learning space. The pavilion will be made slightly smaller so that it sits in the turning circle more comfortably, and it will provide space for up to 60 seats for student learning. It is expected that it will be open from 8:00am to 8:00pm for student access, with potential for extended opening hours until 11:00pm for evening events.

Amount and Scale

The pavilion is to be modified to reduce its size from 16m x 10m down to 16m x 6.5m approx., covering an area of 104 sqm. At its highest point (the pitch of the roof), the pavilion will be approximately 6.1m above ground level.

Layout

The pavilion will be located at the vehicle turning circle south of the Bernard Katz Building. This space is largely underutilised due to the restrictions on vehicle movements into campus resulting from the New Student Centre construction works. Space for fire vehicle access will be maintained.

The turning circle space is relatively discreet and enclosed, being flanked by the Bernard Katz Building to the north, a substation building to the east (which is located behind the rear of the Gordon Square terraced houses), the MRC building to the south, and the Andrew Huxley Building to the west.

Appearance

The pavilion structure is a prefabricated modular building, with robust white PVC wall panels and glazed panels/doors to the facades. The roof structure is a lightweight truss system with a stretched fabric membrane.

The existing arrangement of glazing and solid wall panels is to be retained, and a timber deck installed to part of its perimeter to provide the necessary ramp and steps to overcome the small change in level (of about 300mm) from outside to inside, similar to the existing arrangement.

The structure will be placed on the existing hard-landscaped surface of the turning-circle, and will be held down with ballast weighting to all structure feet, these weights concealed either beneath the cassette flooring internally or the decking externally.

The structure will not be installed within the canopy zones of any trees.

Landscaping

No hard or soft landscaping is proposed.

Access

As in the existing arrangement, the pavilion structure will have an accessible Part M compliant ramp and handrails, and level thresholds to all entrance doors.



The existing turning circle with the MRC Building behind