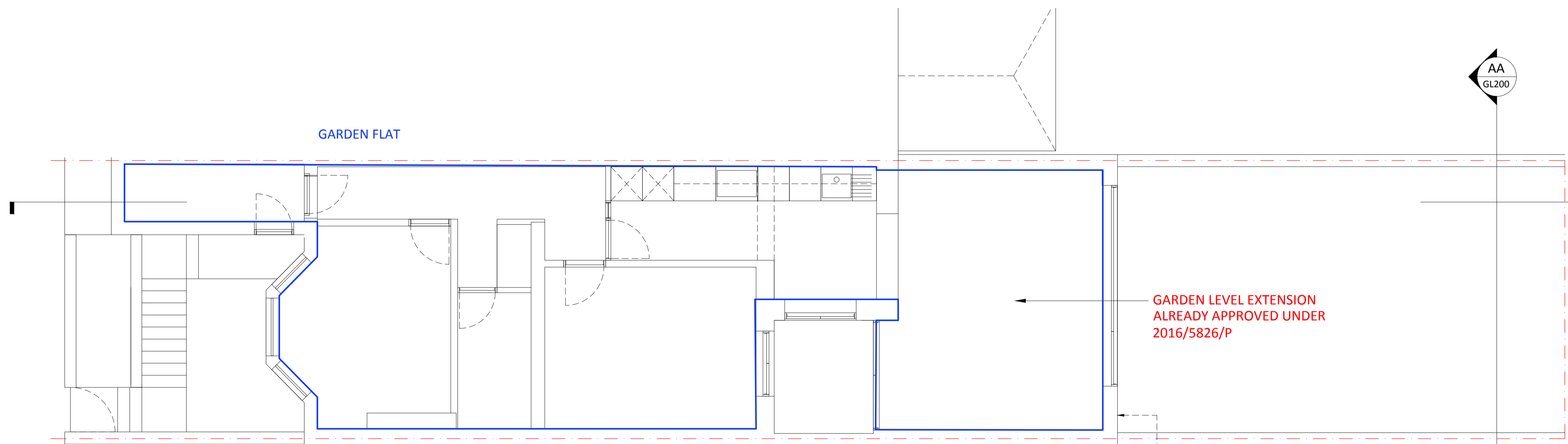
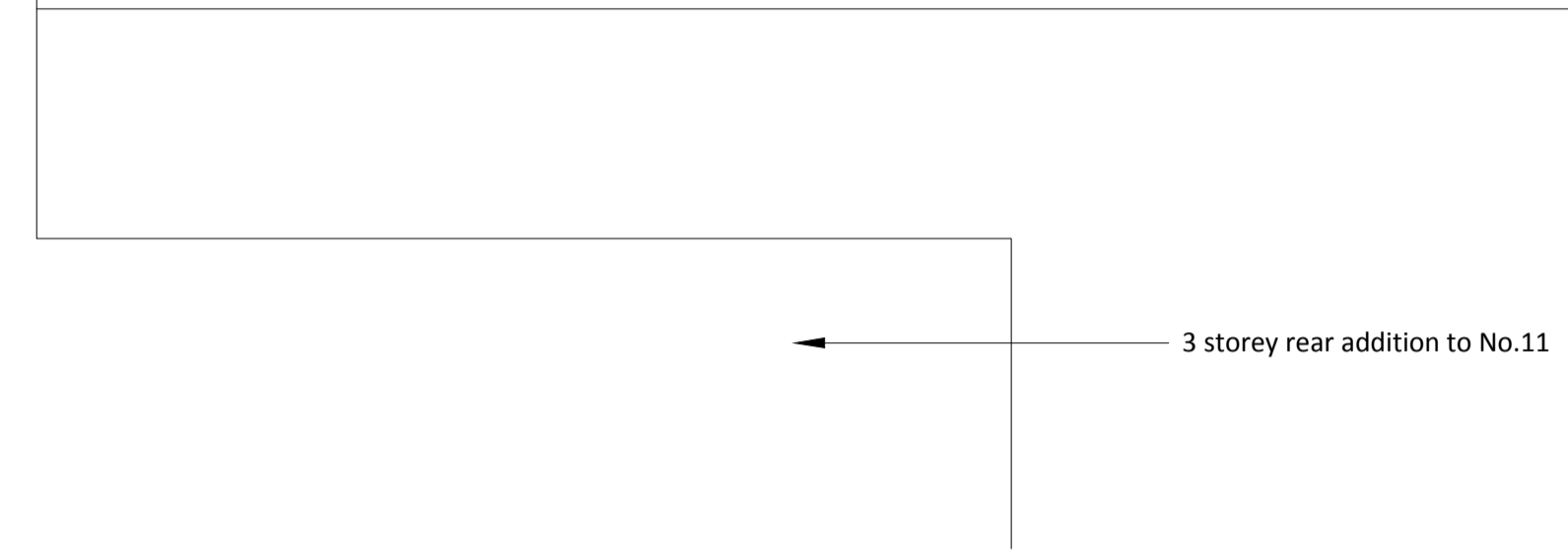


**xP00** EXISTING LAYOUT - LOWER GROUND / GARDEN LEVEL  
 0 0.5 1 2 3 1:50 at A1  
 DEMOLITION



**pP00** PROPOSED LAYOUT - LOWER GROUND / GARDEN LEVEL  
 0 0.5 1 2 3 1:50 at A1

GARDEN LEVEL EXTENSION  
 ALREADY APPROVED UNDER  
 2016/5826/P

Ground floor extension aligned with  
 existing 3 storey rear additions

A 26.02.17 PLANNING APP

9 Gladys Road  
 London  
 NW6 2PU

9GL\_PL/2\_100

LOWER GROUND FLOOR PLAN  
 Existing & Proposed

1:50 @ A1

26/02/17