

1 The Contractor must check and confirm all dimensions

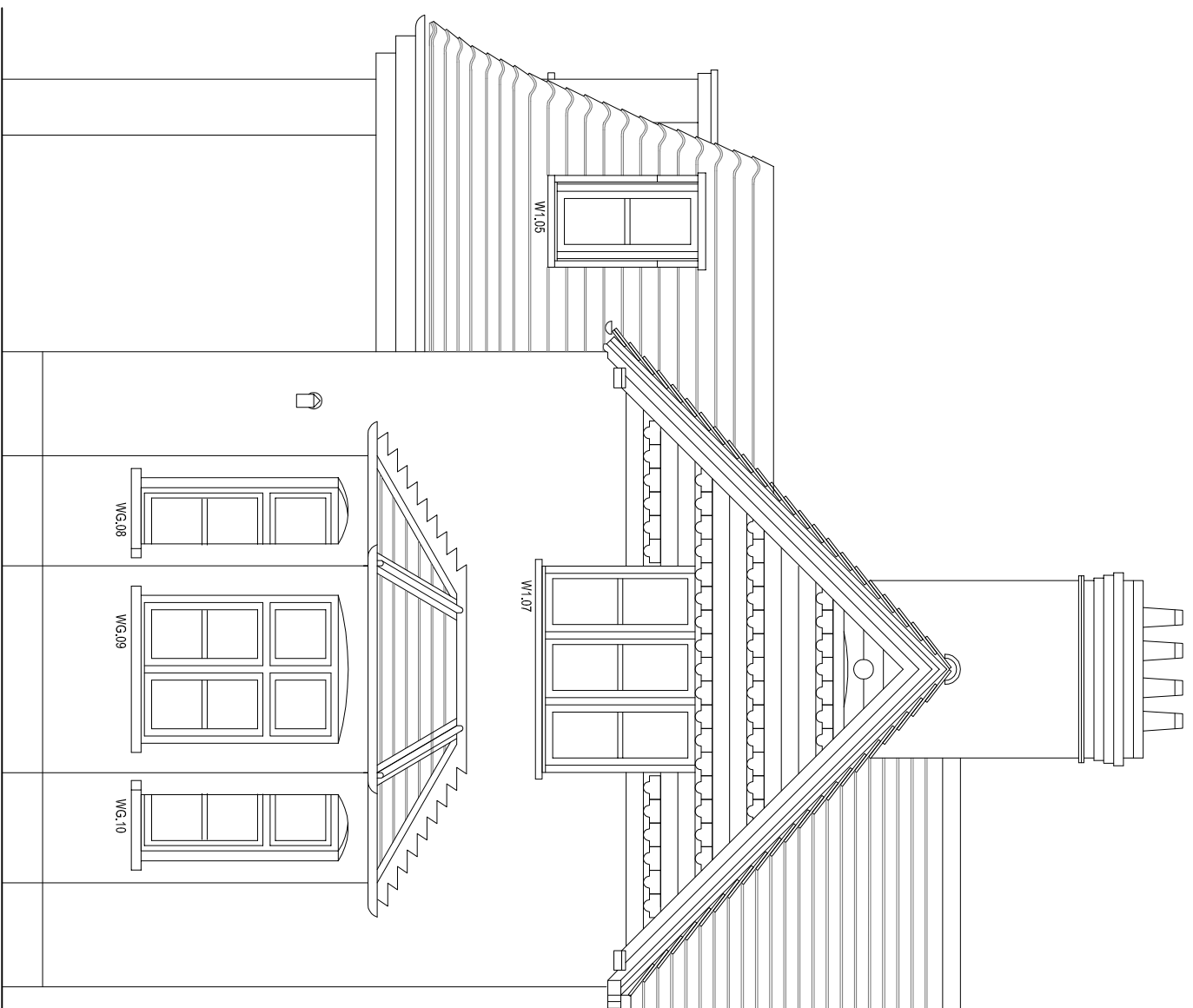
2 All discrepancies must be reported and resolved by the architect before works commence

3 This drawing is not to be scaled

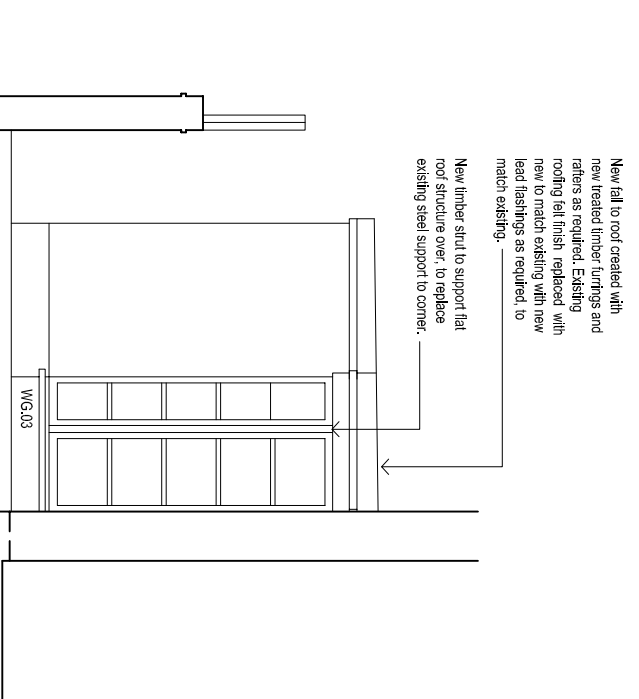
4 All work and materials to be in accordance with current applicable Statutory Legislation, Codes of Practice, British Standards and EU Regulations

5 Drawings show design intent only. It is the Contractor's responsibility to ensure that the construction is sound and fit for use, in accordance with the Client's requirements.

Revisions.



Proposed Part Elevation facing Northwest - Vivary Cottage



Proposed Rear Area elevation facing southeast adjacent to walkway

New high performance felt roof finish to rear extension with furrings altered to ensure adequate fall. New clear double glazed timber window to WG.03 and W1.05 to match detail of existing timber window W1.06 but with deeper reveal to accommodate 12mm sealed double glazed unit, see detail PR-D01. WG.03 to be obscure glazed with one sheet of glass in clear glazed sealed double glazed unit to be as Pilkington Arctic or equal approved. WG.03 requires new timber struts to support roof timbers to replace existing steel strut at corner.