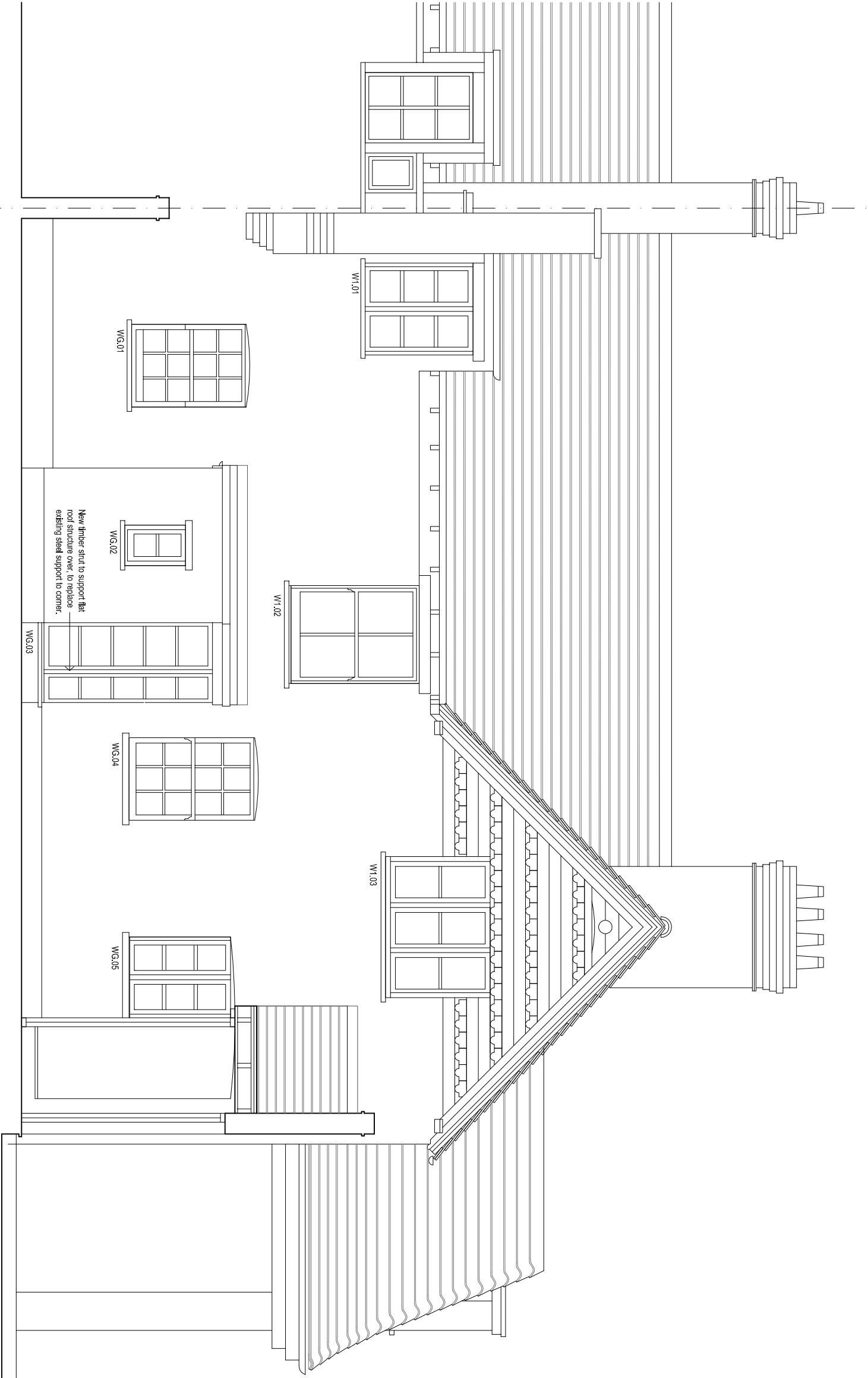


- 1 The Contractor must check and confirm all dimensions
- 2 All discrepancies must be reported and resolved by the architect before works commence
- 3 This drawing is not to be scaled
- 4 All work and materials to be in accordance with current applicable Statutory Legislation, Codes of Practice, British Standards and EU Regulations
- 5 Drawings show design intent only. It is the Contractor's responsibility to ensure that the construction is sound and fit for use, in accordance with the Client's requirements.

Revisions.



Lavender Cottage
not surveyed

Proposed South East facing Elevation - Vivary Cottage

New high performance felt roof finish to rear flat roofed extension with furrings altered to ensure adequate fall.
New clear double glazed timber windows to WG.02, WG.03, WG.05, W1.01 and W1.03 to match detail of existing timber window W1.06 but with deeper reveal to accommodate 12mm clear, sealed, double glazed unit.
WG.02, WG.03 and W1.03 to be obscure glazed with one sheet of glass in clear glazed sealed doubled glazed unit to be as Pilkington Arctic or equal approved.
WG.03 requires new timber struts to support roof timbers to replace existing steel strut at corner.