



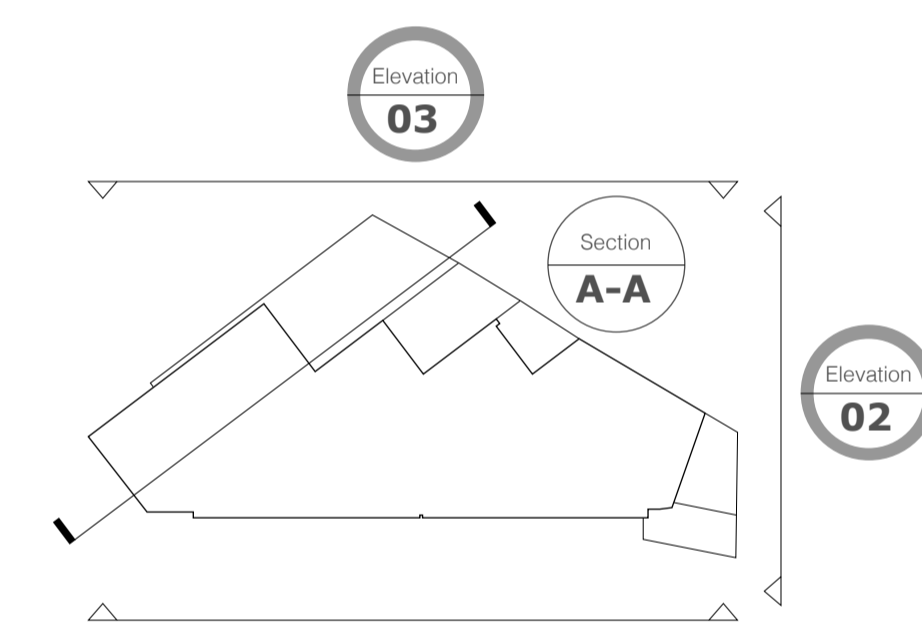
Elevation 01
FRONT ELEVATION
INGESTRE ROAD

- Obscured Glazing Panel To Specified Windows
- Zinc Cladding System in Grey, with Vertical Locking Detail
- Raised Parapet Line formed by Set-Back of New 3rd Floor**
- Smooth Off-White Render to Stair Cores and Second Floor Level
- Sandstone Coping and Facing Edge Detail
- Light Grey Aluminium Window Casements
- Light Grey Infill Panels
- Yellow London Stock Clay Brick

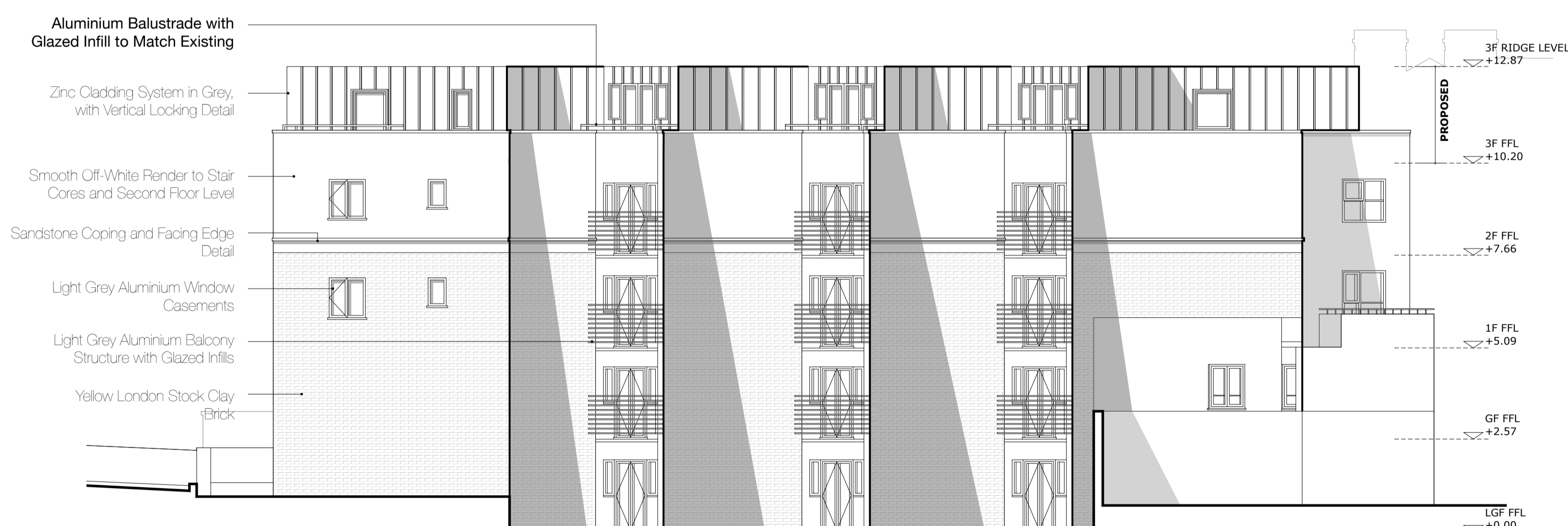


Elevation 02
EAST ELEVATION

- Zinc Cladding System in Grey, with Vertical Locking Detail
- Dark Grey Window Reveals with Light Grey Window Casements
- Smooth Off-White Render to Stair Cores and Second Floor Level
- Sandstone Coping and Facing Edge Detail
- Light Grey Aluminium Window Casements
- Yellow London Stock Clay Brick

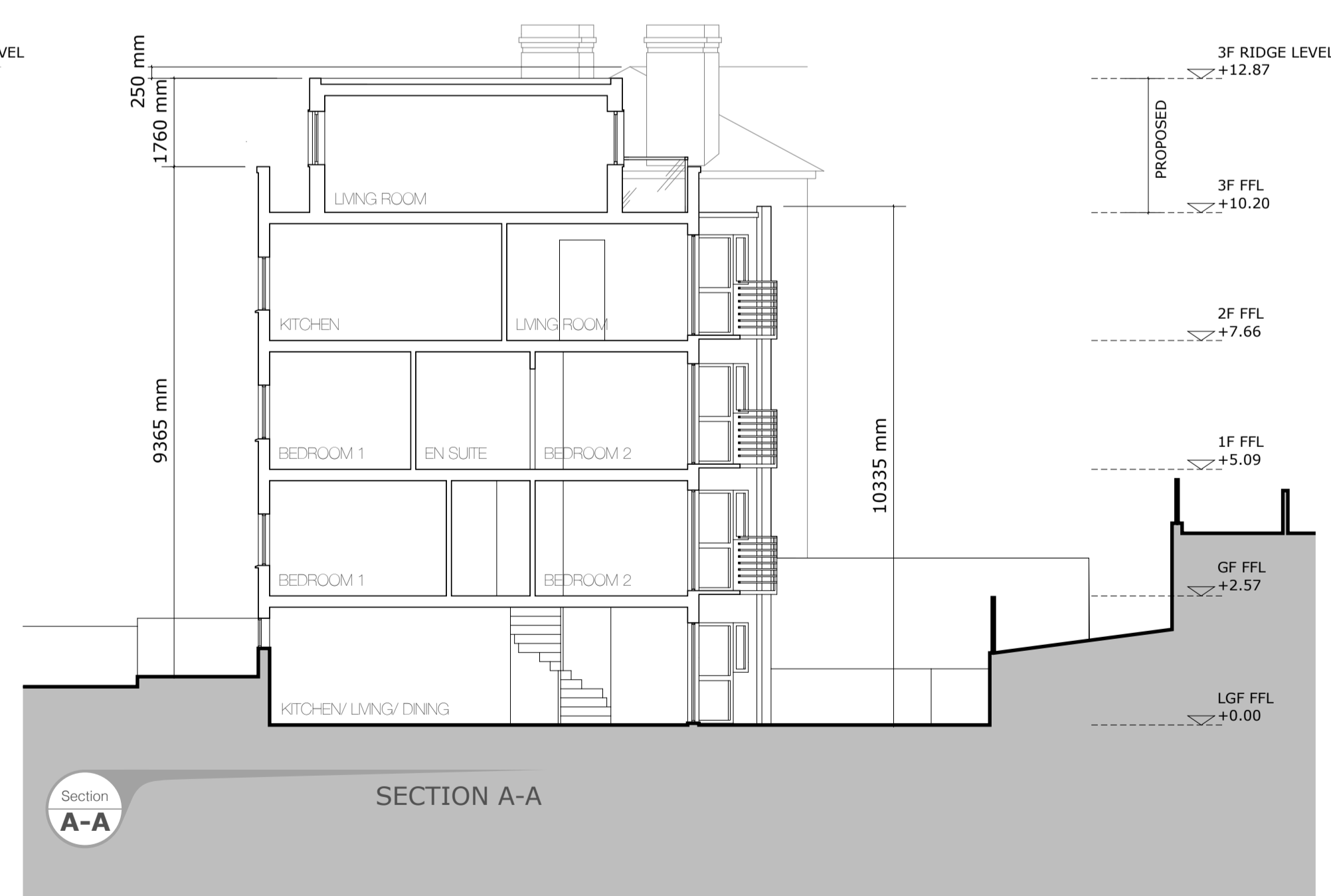


Elevation 02



Elevation 03
REAR ELEVATION

- Aluminium Balustrade with Glazed Infill to Match Existing
- Zinc Cladding System in Grey, with Vertical Locking Detail
- Smooth Off-White Render to Stair Cores and Second Floor Level
- Sandstone Coping and Facing Edge Detail
- Light Grey Aluminium Window Casements
- Light Grey Aluminium Balcony Structure with Glazed Infill
- Yellow London Stock Clay Brick



Section A-A

Elevation 01

PL1 Window and Parapet Amendments AD

Project
7659_Burghley Court
Ingestre Road
London
NW5 1UF

Title
Proposed Elevations

Scale 1:100 @ A1 Date 13/02/2017

Drawn AD Checked NM

Drawing Number PL300 Revision PL1

Saunders
Architecture + Urban Design