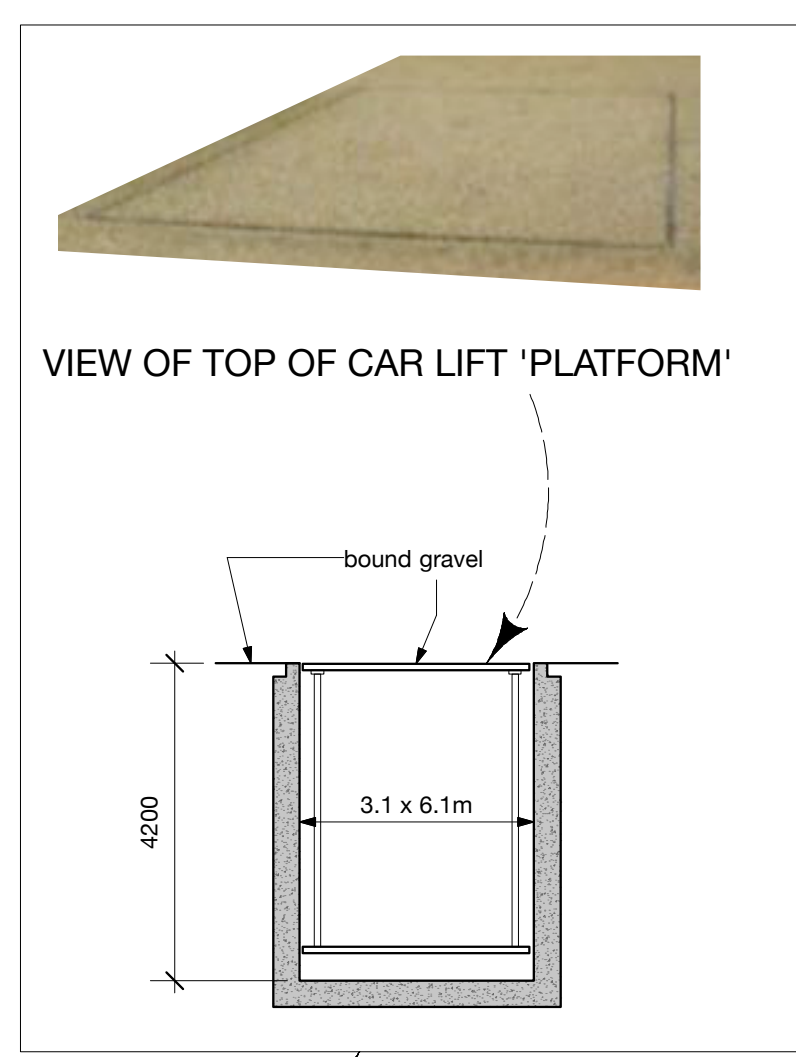
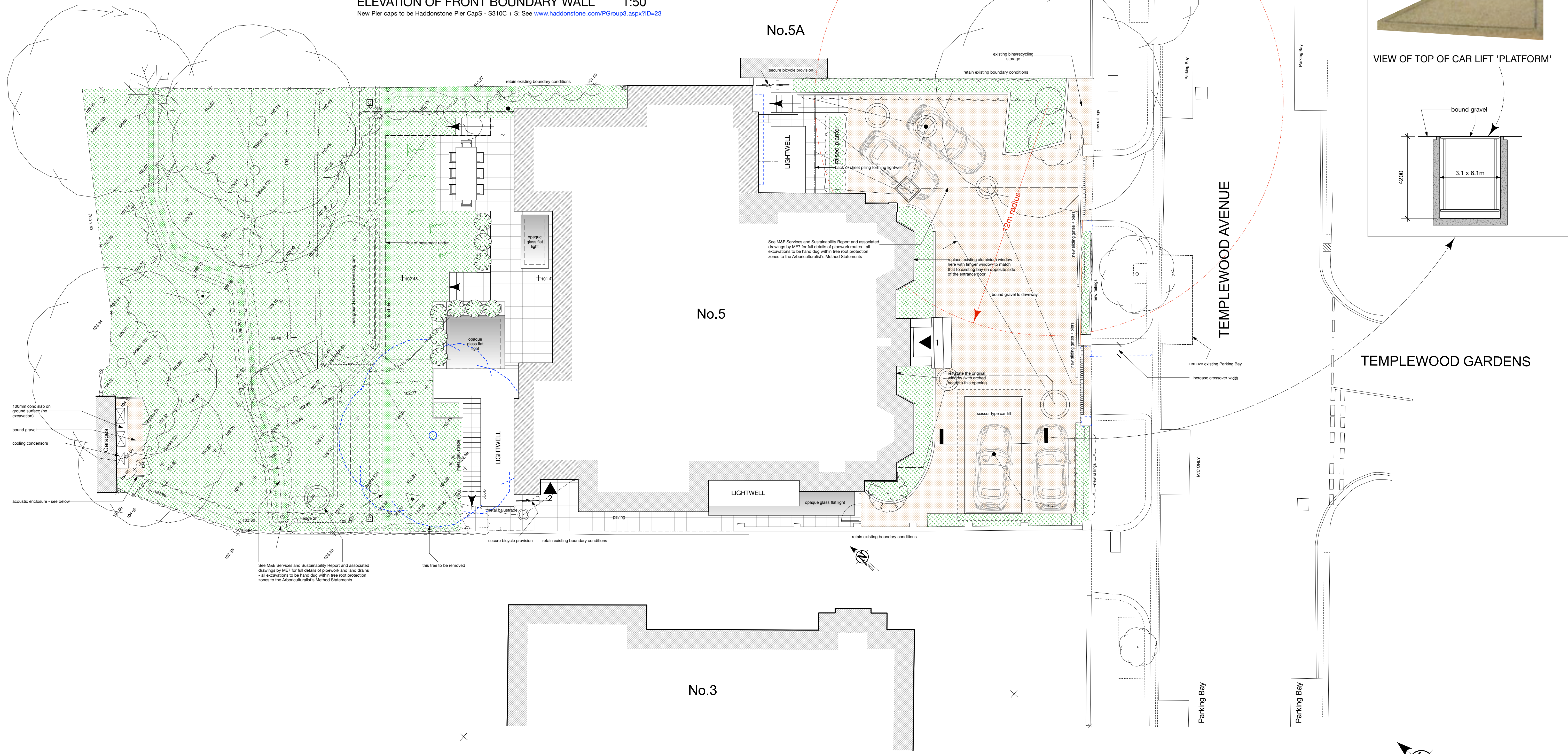


ELEVATION OF FRONT BOUNDARY WALL 1:50  
New Pier caps to be Haddonstone Pier CapS - S310C + S: See [www.haddonstone.com/PGGroup3.aspx?ID=23](http://www.haddonstone.com/PGGroup3.aspx?ID=23)

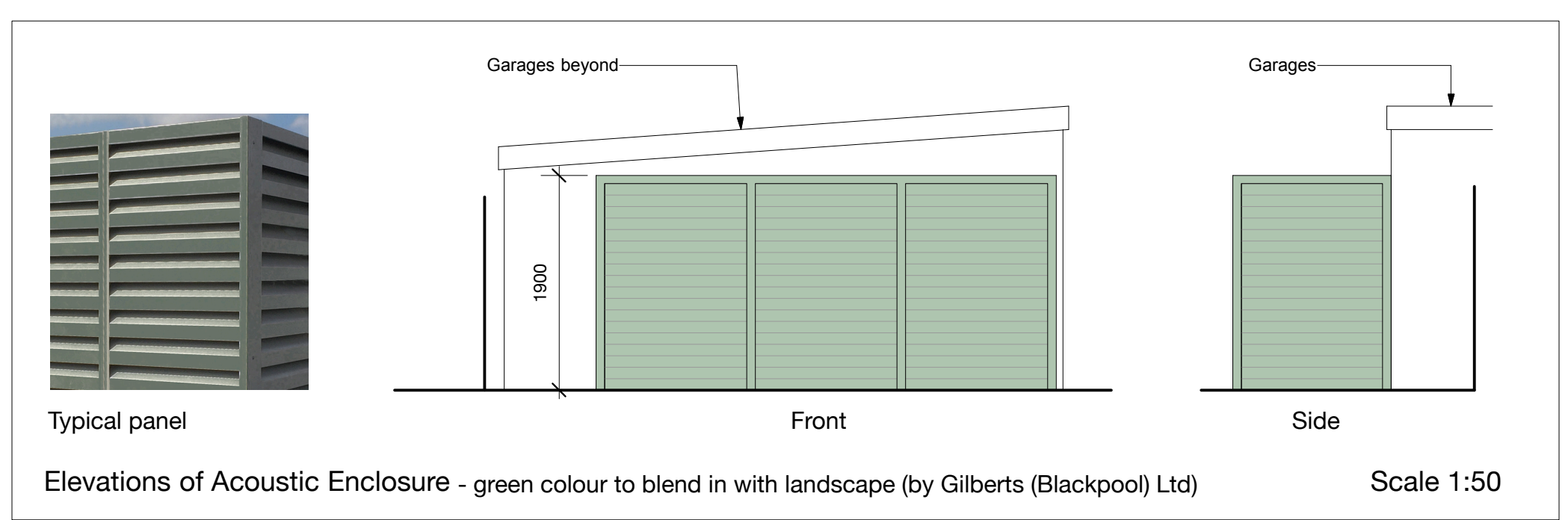


**KEY**

Existing

New

Existing to be removed/demolished



Rev A - Front boundary wall added 14.02.17

PROPOSED

**Architects**  
BROD WIGHT

43 England's Lane London NW3 4YD --- 020 7722 0810 --- [office@brodwight.co.uk](mailto:office@brodwight.co.uk) --- [www.brodwight.co.uk](http://www.brodwight.co.uk)

5 Templewood Avenue, Hampstead NW3 7UY

Proposed Site Plan

Date Feb 2017 This drawing is copyright 1046-AP01A 1:100 @ A1 Scale