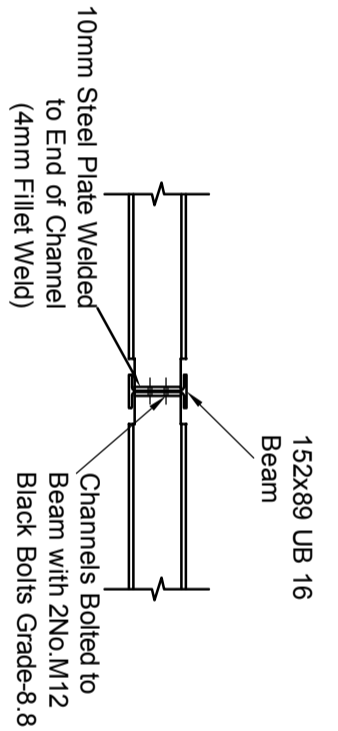
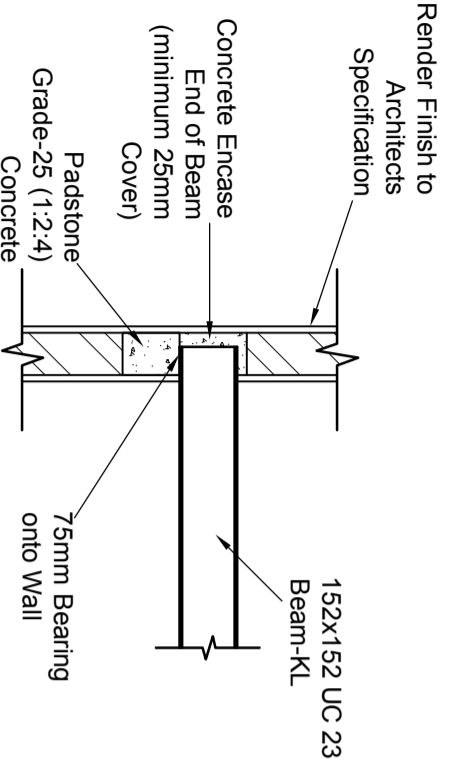


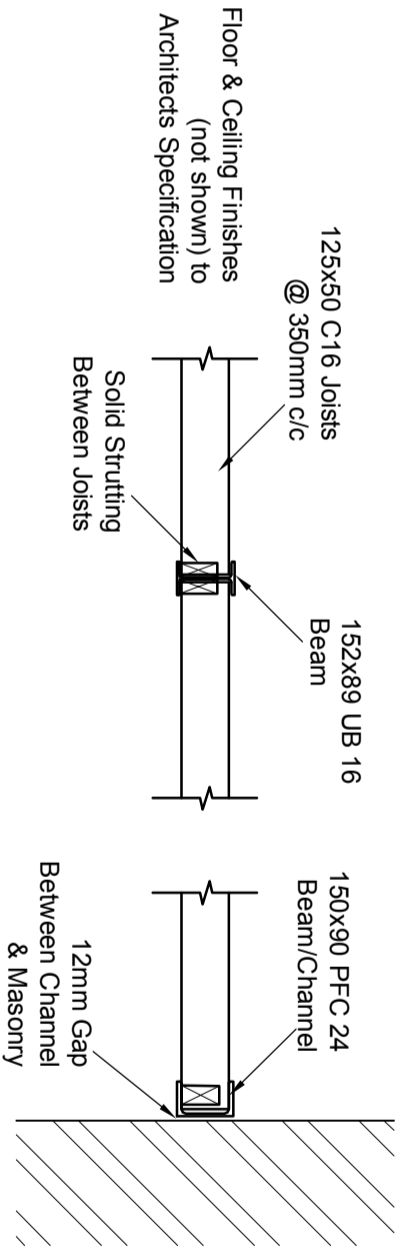
TYPICAL CLEAT DETAIL



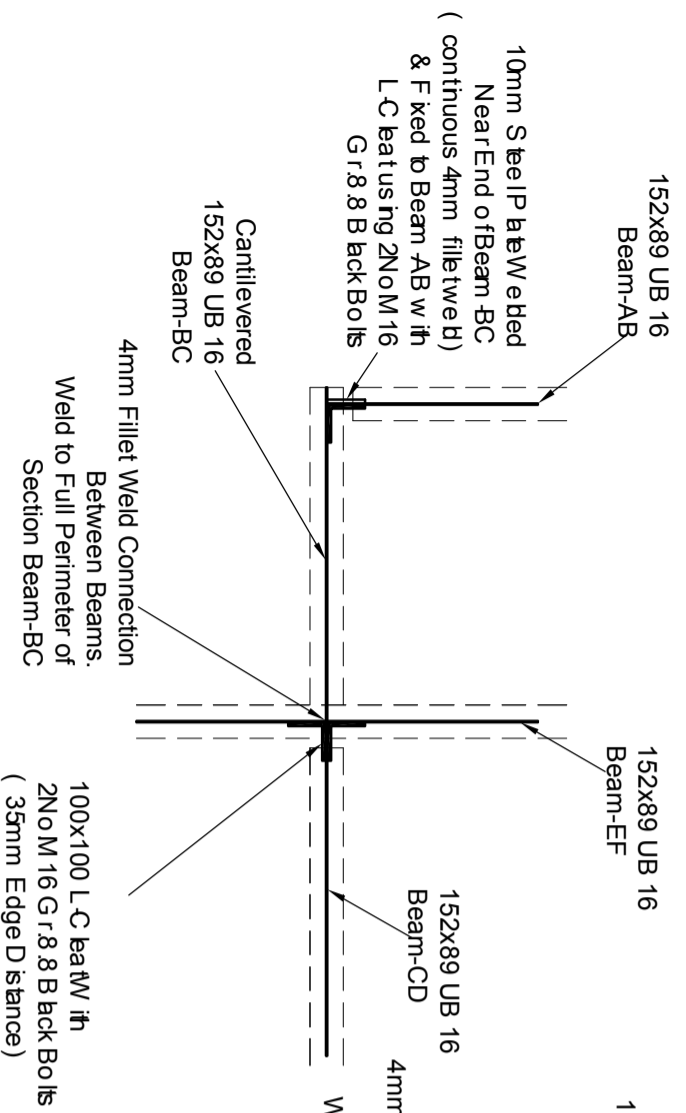
CHANNEL END CLEAT DETAIL



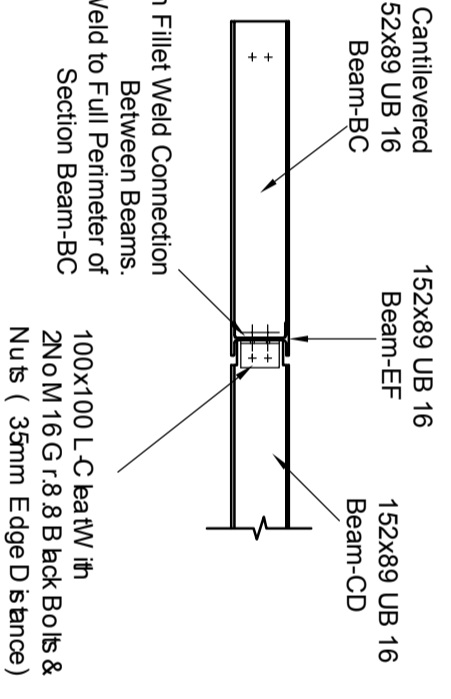
PADSTONE DETAIL AT BEAM END BEARING - "K"



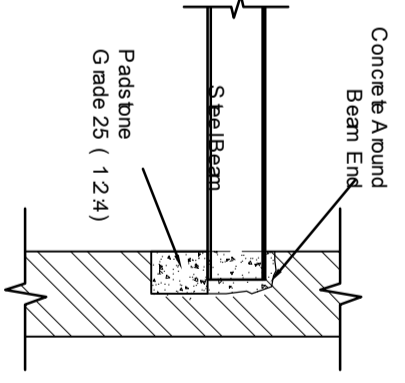
JOIST SUPPORT



CANTILEVERED BEAM WELDED END CONNECTION PLAN DETAIL



CANTILEVERED BEAM WELDED END CONNECTION SECTION DETAIL



TYPICAL PADSTONE DETAIL

- NOTES**
- All dimensions to be verified on site.
 - Read in conjunction with architect's drawings.
 - All steelwork designed to EN3 fabricated to EN3 and EN1090.
 - All steel members to be grade S275JR steel unless otherwise noted.
 - Apply 2 coats of red oxide primer/2 coats zinc rich primer to all steel prior to erection.
 - All fire protection to architect's specification, provide min. ½ hour fire resistance capability to all steel (e.g. 12.5 mm plasterboard and 7mm skim).
 - All welding to be 4mm fillet welds carried out in workshop.
 - All black bolts to be grade 8.8.
 - All timberwork designed to BS 5268 OR EN5.
 - Double and triple joists to be bolted together with M12 bolts + 63mm dia. TP connectors and washer plate @ 450 c/c unless otherwise noted.
 - Connections:
 - TIMBER/BRICK: BAT SPH hanger when there is a minimum of 675mm of brickwork above, if not use MAXI SPEEDY hangers or equivalent.
 - TIMBER/TIMBER: BAT JIFFY or MAXI SPEEDY hanger or framing anchor.
 - RAFTER/TIMBER PLATE: use BAT framing anchors or angle brackets as appropriate. Do not skew nail any connection.
 - ALLOW FOR BAT M305 STRAPS @ 1200 c/c for restraint of joists and all wall plates.
 - Concrete padstones to be grade C25 (1:2:4).
 - All temporary propping by the contractor.
 - New brickwork to be 35N/mm² new blockwork to be 3.5n/mm² set in 1:1.6 mortar, unless noted otherwise.
 - All works to be approved by the building control officer.
 - No work to commence on site prior to building control approval of structural details.
 - Any beams, joists hangers, or other structural works attached to party wall may be subject to party wall agreement.
 - Floor joists strapped to main brick walls in accordance with A3 disproportionate collapse guidelines.
 - If contractor has preferred alternative method of construction please call us.

Title: **Typical Details to Mezzanine Structural Floor**

Preliminary

Rev	Date	Description	Appr

Martin Redston Associates
Consulting Civil & Structural Engineers

4 Edward Square, London N1 0SP
Tel: 020-7837 5377 Fax: 020-7837 3211

6 Hale Lane, London NW7 3NX
Tel: 020-8959 1666 Fax: 020-8906 8503

Date: 24/02/17	Sheet No. Rev
Eng: PS	Scale: 1:20@A3
Job No: 16-364	2
Project: Flat-3, 16 St Pancras Chambers	-

