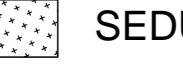





Which? HQ

Address
**2 Marylebone Road &
 1-9 Albany Street**

Client
 Which?
 2 Marylebone Road
 London, NW1 4DF
 Tel: +44 (0)20 7770 7000 Fax: +44 (0)20 7770 7600

Architect
 Kohn Pedersen Fox Associates (International) PA
 Architects & Planning Consultants
 7a Langley Street
 London WC2H 9JA, United Kingdom
 Tel: +44 (0)20 31195300 Fax: +44 (0)20 74971175

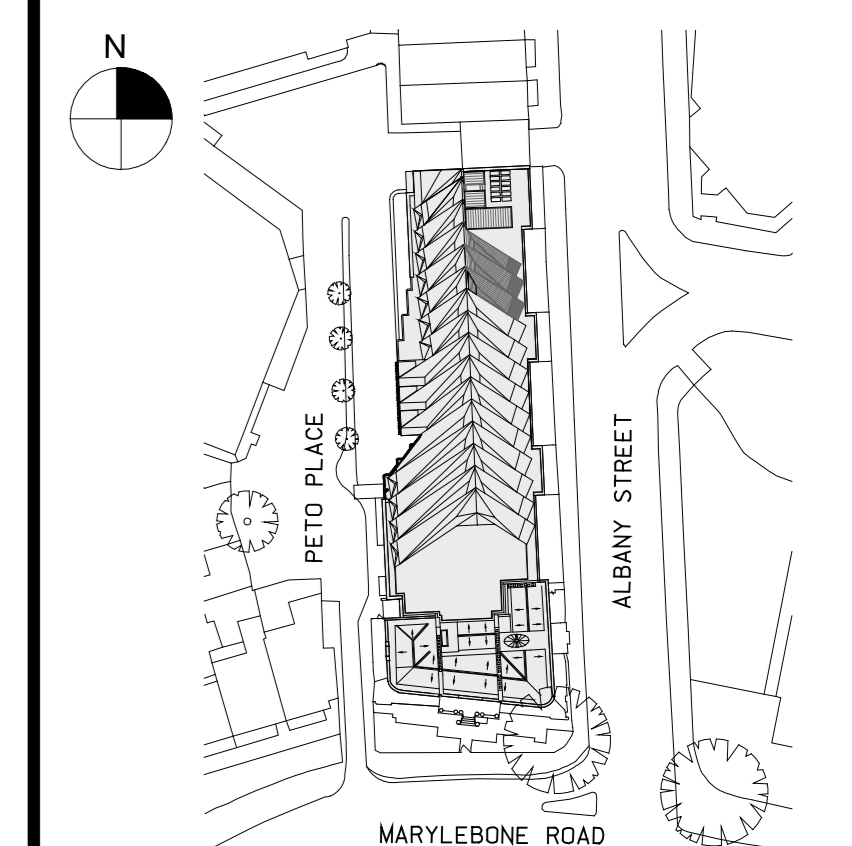
-  SEDUM
-  BALLAST
-  ACCESSIBLE TERRACE PAVING
-  MAINTENANCE ONLY TERRACE PAVING.

0m 1m 2m 4m

16	PLANNING AMENDMENT	04.10.15
15	CONSTRUCTION 1	30.10.15
14	TENDER UPDATE	02.10.15
13	STAGE E UPDATE	18.09.15
12	STAGE E ISSUE	14.08.15
11	S73 PLANNING	30.07.15
10	REVISED STAGE 1 TENDER	30.06.15
09	REVISED STAGE D	26.06.15
08	STAGE 1 TENDER	08.05.15
07	STAGE D ISSUE	24.04.15
06	STAGE D FREEZE UPDATE	17.04.15
05	STAGE D FREEZE	10.04.15
04	FOR INFORMATION	23.03.15
03	FOR INFORMATION	10.03.15
02	PLANNING SUBMISSION	21.08.13
01	FOR INFORMATION	17.06.13
00	FOR INFORMATION	18.04.13

No. Issue Date

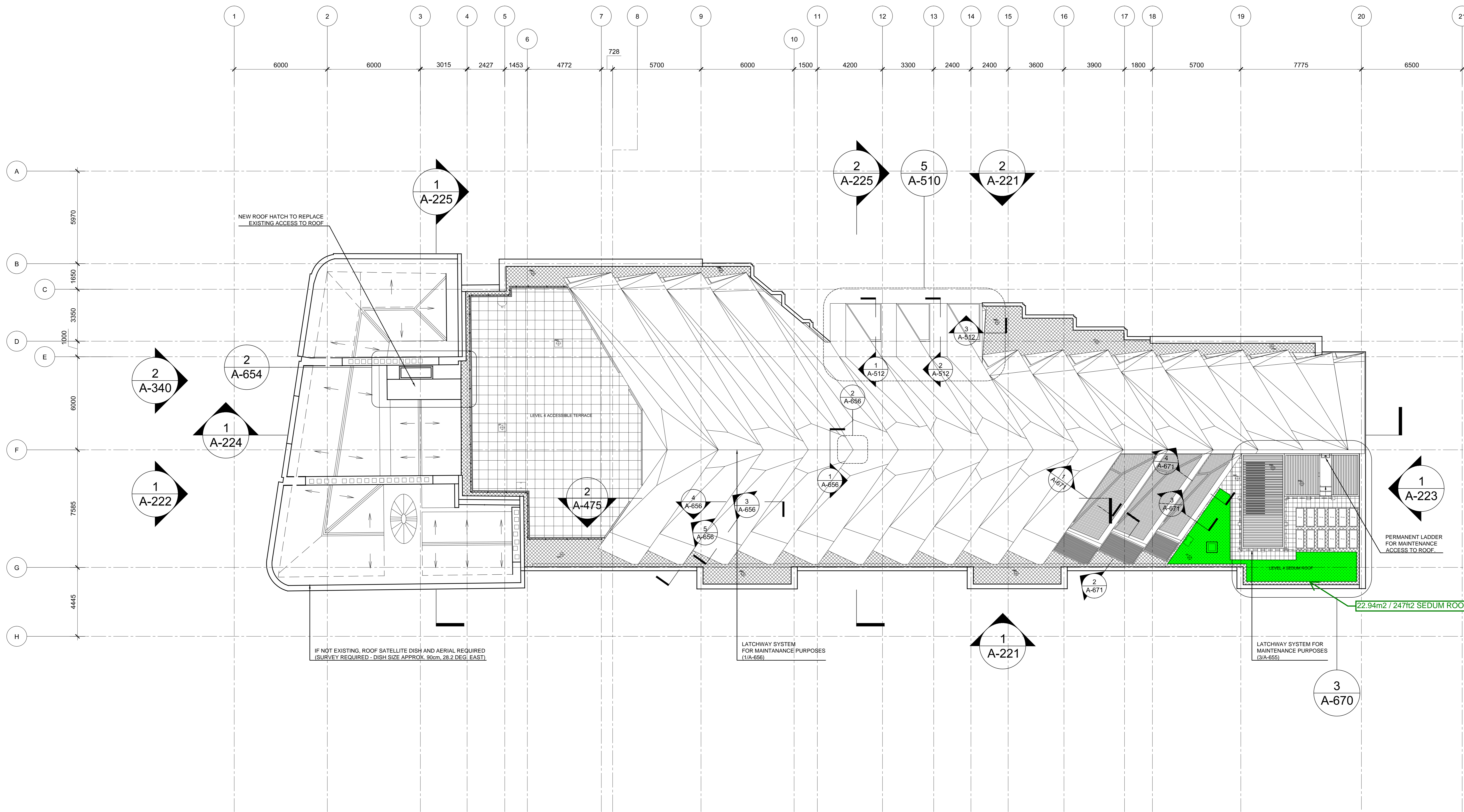
Key Plan



Date
 18.04.13
 Scale
 1:100 @ A0
 Project No.
 859
 Drawn By

**ROOF PLAN
 PROPOSED**

A-106



1 Roof Plan - Proposed
 SCALE: 1:100 @ A0

NOTE: TOTAL SURFACE AREA = 1223 sqm
 SOLID = 1025 sqm
 LOUVRE = 105 sqm
 GLAZING = 93 sqm