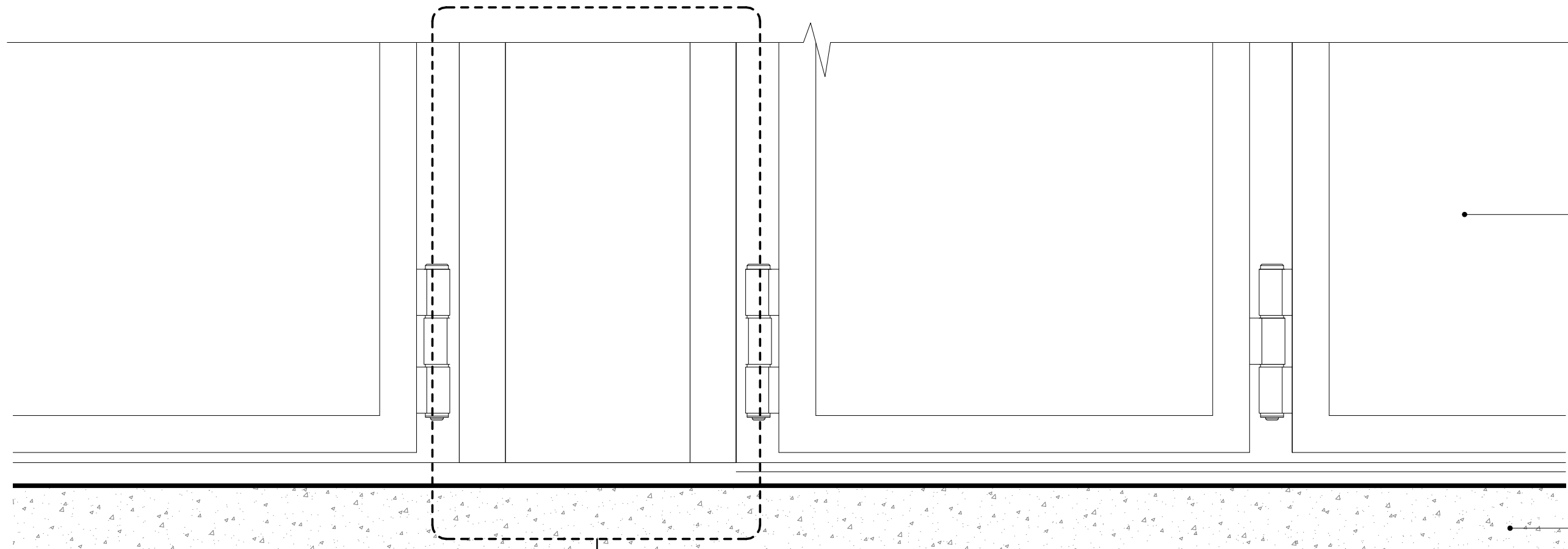
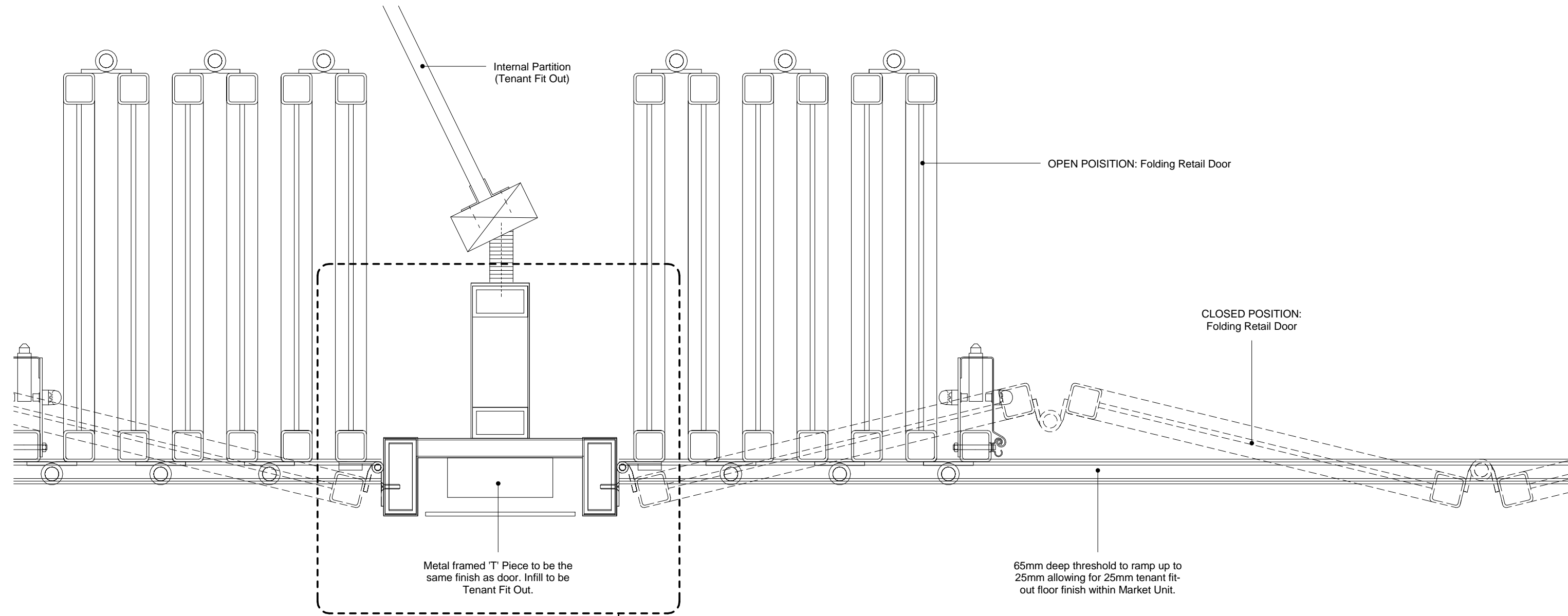


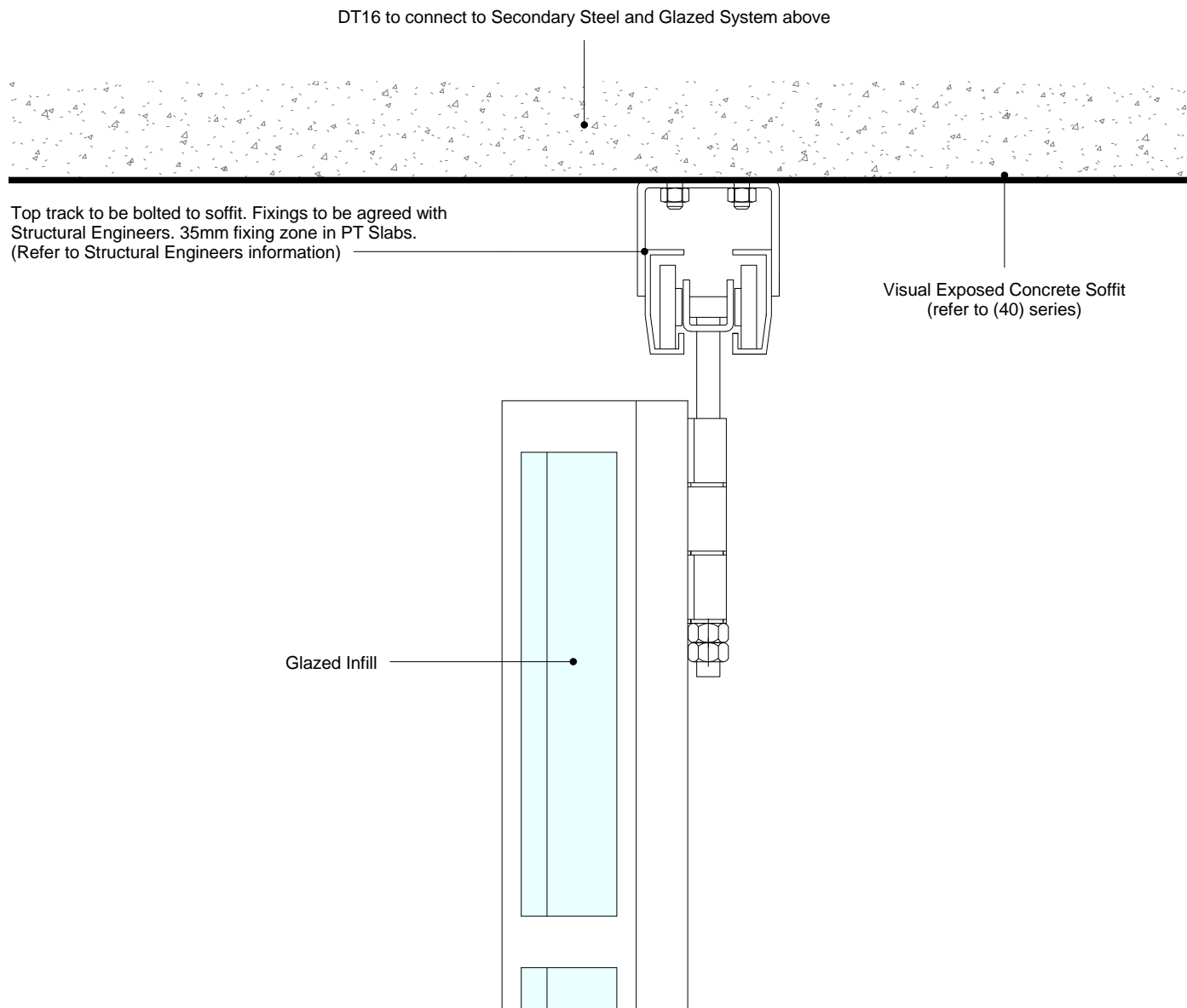
1 DT15 & DT19_Elevation_Detail of Top of Folding Doors



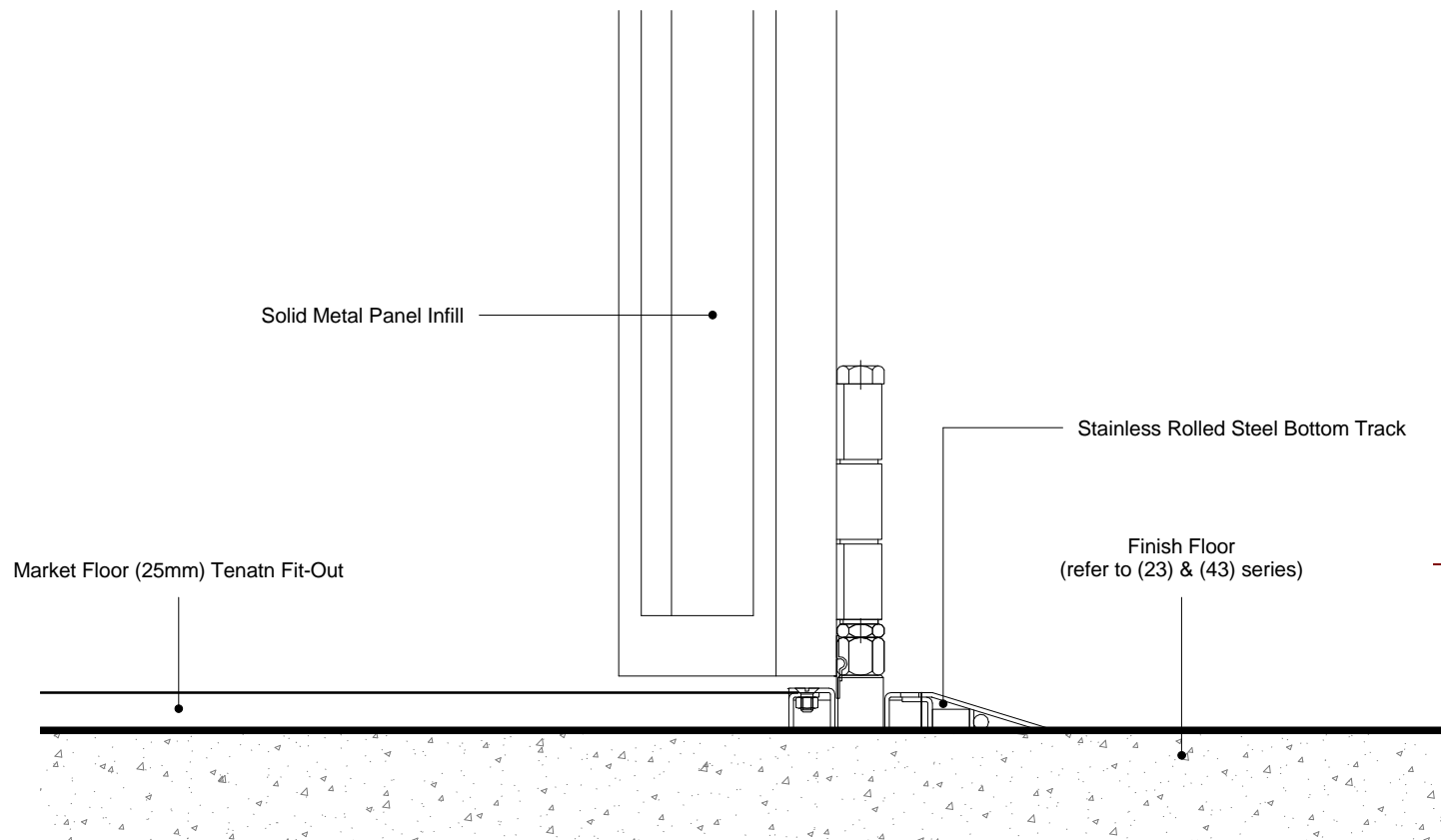
2 DT15 & DT19_Elevation_Detail of base of shutters



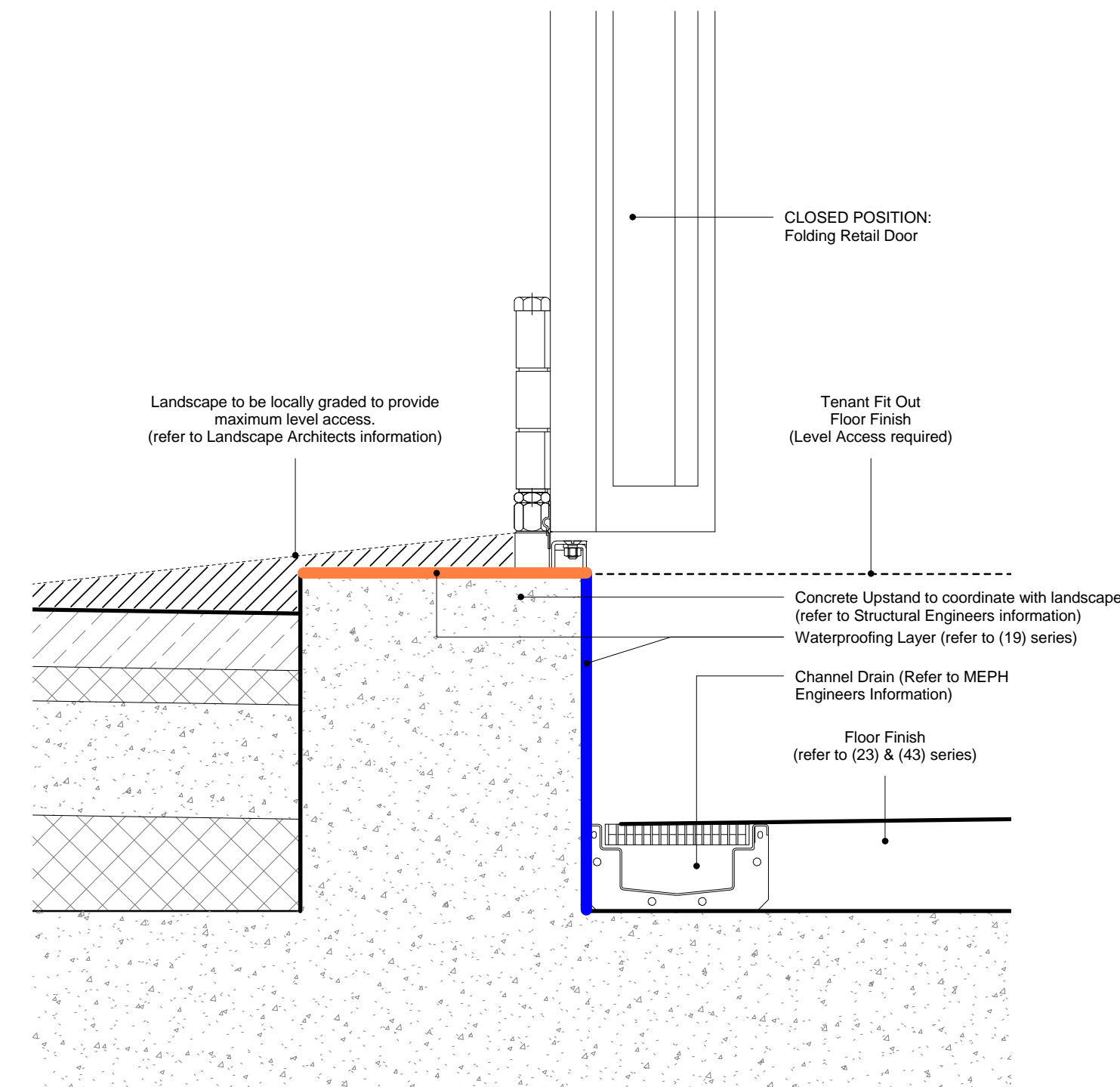
3 DT15 & DT19_Plan_Detail Folding Door



4 DT15 & DT19_Section_Detail of Top of Door Closed



5 DT15 & DT19_Section_Detail of Base of Door (on screed) Closed



6 DT15 & DT19_Section_Detail of Base of Door (on concrete upstand)

- KEY
- For other elements refer to individual drawing series:
- (19) Waterproofing
 - (20) Slab Edge
 - (21) Facade
 - (22) Internal walls
 - (23) Floors
 - (31) Windows
 - (32) Doors
 - (35) Soffits / Ceilings
 - (40) Visual concrete
 - (42) Internal Wall finishes
 - (43) Floor finishes
 - (45) Soffits / Ceilings Finishes
- Landscape Information taken from Drawing D1807 L.210 Lower Ground Floor - Hard & Soft Landscape General Arrangement by Fabrik, Revision O, dated 11.12.15

For dimensions and performance requirements of the doors refer to Door Schedule AX_(32)_0014, 0016 and 0018.

Client to confirm Master Key Suite Strategy.

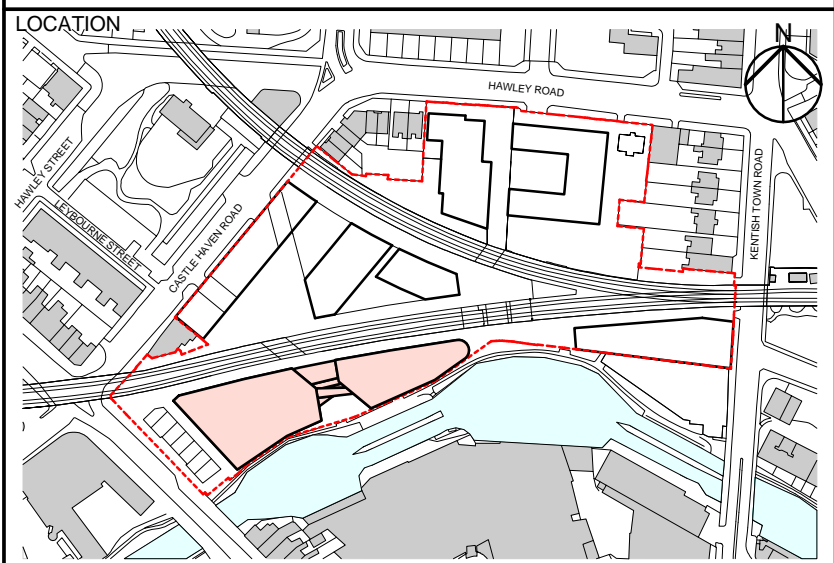
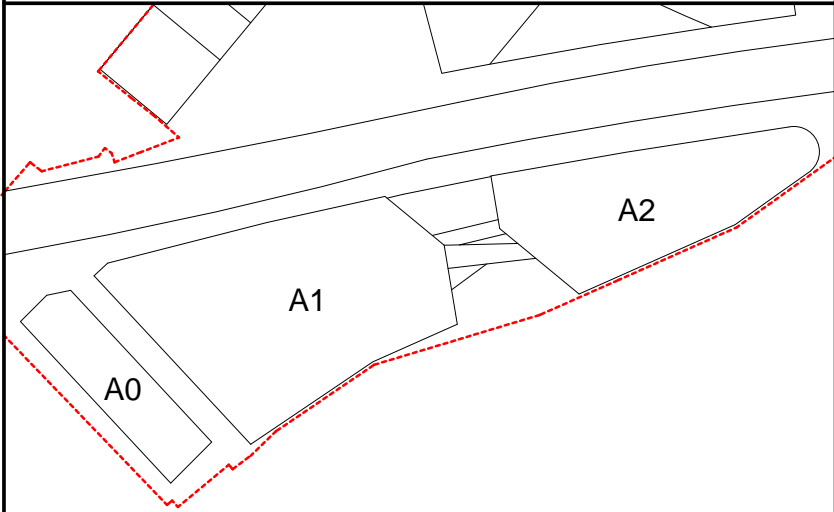
For locations of DT15, DT16 and DT19 refer to Door Scope Plans 14045_AX_(32)_1191, 1192 and 1201.

F 03	28/10/16	Stage F - For Coordination
F 02	23/09/16	Stage F - For Coordination
F 01	29/07/16	Stage F - For Coordination
REV	DATE	DESCRIPTION

CONSULTANTS	
CLIENT:	Stanley Sidings
CONTRACTOR:	Mace Group
STRUCTURAL ENGINEER:	Walsh Group
MECHANICAL ENGINEER:	AECOM
COST CONSULTANT:	Gardiner & Theobald
PROJECT MANAGER:	Gardiner & Theobald
ACOUSTIC CONSULTANT:	Arup
TRANSPORT CONSULTANT:	Arup
PLANNING CONSULTANT:	Gerald Eve
LANDSCAPE ARCHITECT:	Fabrik
CDM CO-ORDINATOR:	Gardiner & Theobald

- NOTE
1. Do not scale from this drawing.
 2. All dimensions to be checked on site by the contractor and such dimensions to be his responsibility. Report all drawing errors, omissions and discrepancies to the architect.
 3. This document may be issued in an uncontrolled CAD format to enable others to use it as background information to make alterations and/or additions. In that instance the file will be accompanied by a PDF version. It is for those making such alterations and additions to ensure that they make use of current background information.
 4. AHMM Ltd accepts no liability for any such alterations or additions to the background information or arising out of changes to background information which occur prior to alterations of additions being made.

REFER TO TECHNICAL REFERENCE SHEET FOR SPECIFICATION CLAUSES
DOCUMENT REFERENCE: 14045_A_TRS



AL FORD HALL MONAGHAN MORRIS
ARCHITECTS Ltd
6-23 OLD STREET, LONDON, EC1V 9HL
TEL 020 7251 5261 FAX 020 7251 5123 WEB WWW.AHMM.CO.UK

job title
CAMDEN LOCK VILLAGE

drawing title / location
External Sliding Folding Door Details (DT15 & DT19)

drawn by	checked	scale	status
MP	FG	1 : 5 @ A1	For Coordination
project	drawing no.	revision	
14045	AX_(32)_ 4021	F03	