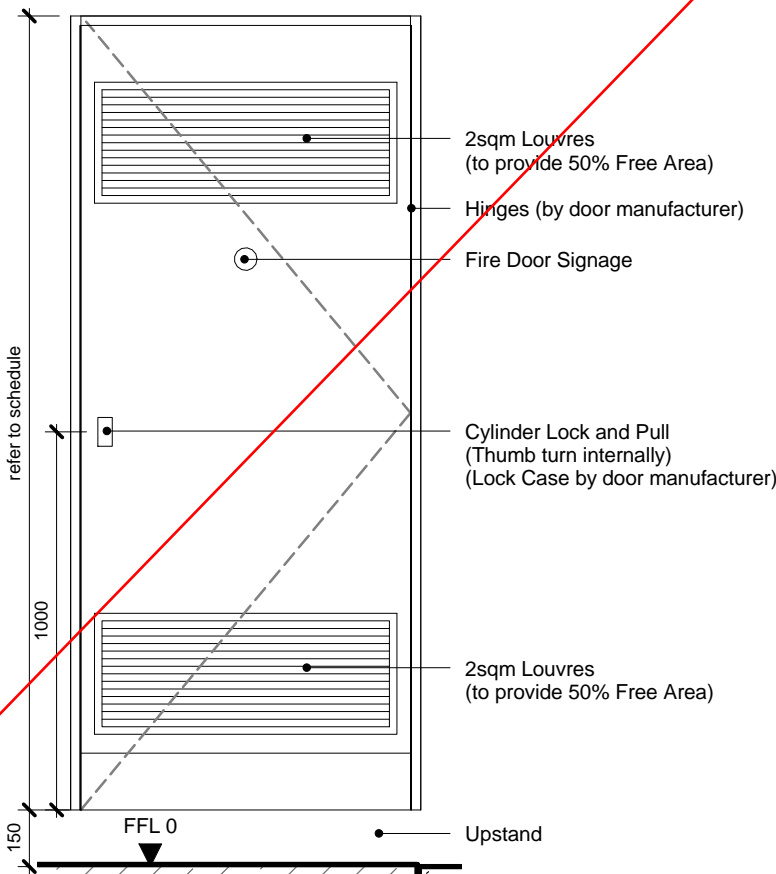


NBS Reference: DT12 (L20/540)

NBS Description: Third Floor Bi-Fold Door
Door Type: DT12
Opening Direction: Sliding/Folding
Ironmongery: Refer to schedule

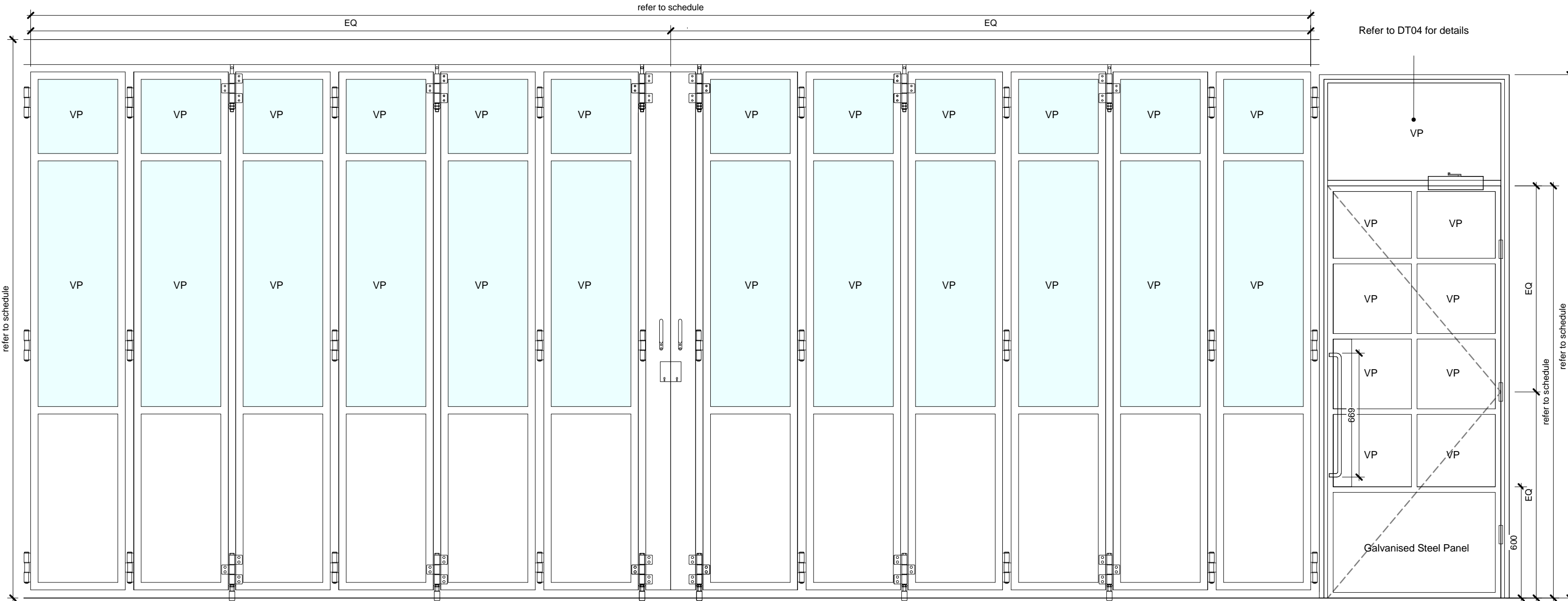
Fire Rating: N/A
Security: To landlords requirements
Notes: To be coordinated with the glazing system on the Third Floor (refer to (21) series).
To subcontractors details. Internal handles and locking. Secondary access only.



NBS Reference: DT13 (L20/486)

NBS Description: Gas Meter Room Door
Door Type: DT13
Opening Direction: Outward
Ironmongery: Refer to Schedule

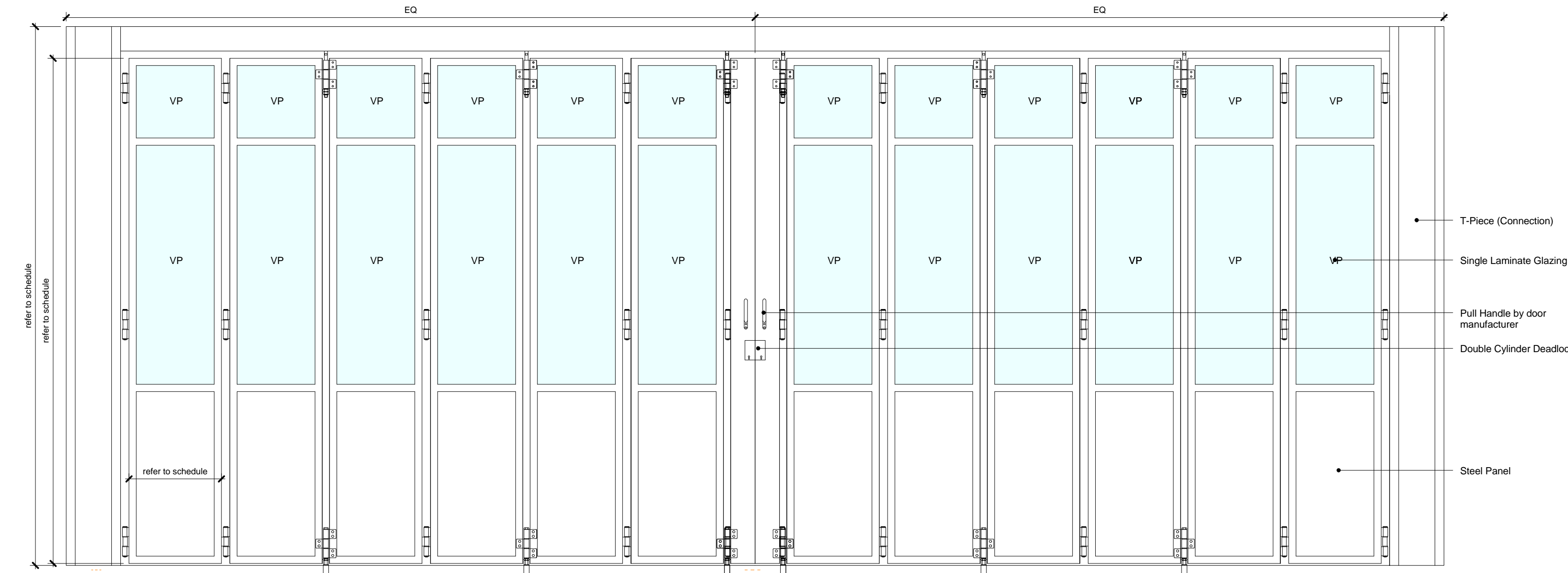
Fire Rating: Refer to schedule
Security: Secure Access for Maintenance Only
Notes: High and low level louvres required of 0.2 sqm each at 50% free area based on a room 2m x 2.5m (approx.).
Refer to MEPH Engineer requirements.



NBS Reference: DT15 (L20/530A)

NBS Description: Folding Retail Door (Entrance door to be included (DT04))
Door Type: DT15
Opening Direction: Sliding/Folding
Ironmongery: Refer to schedule

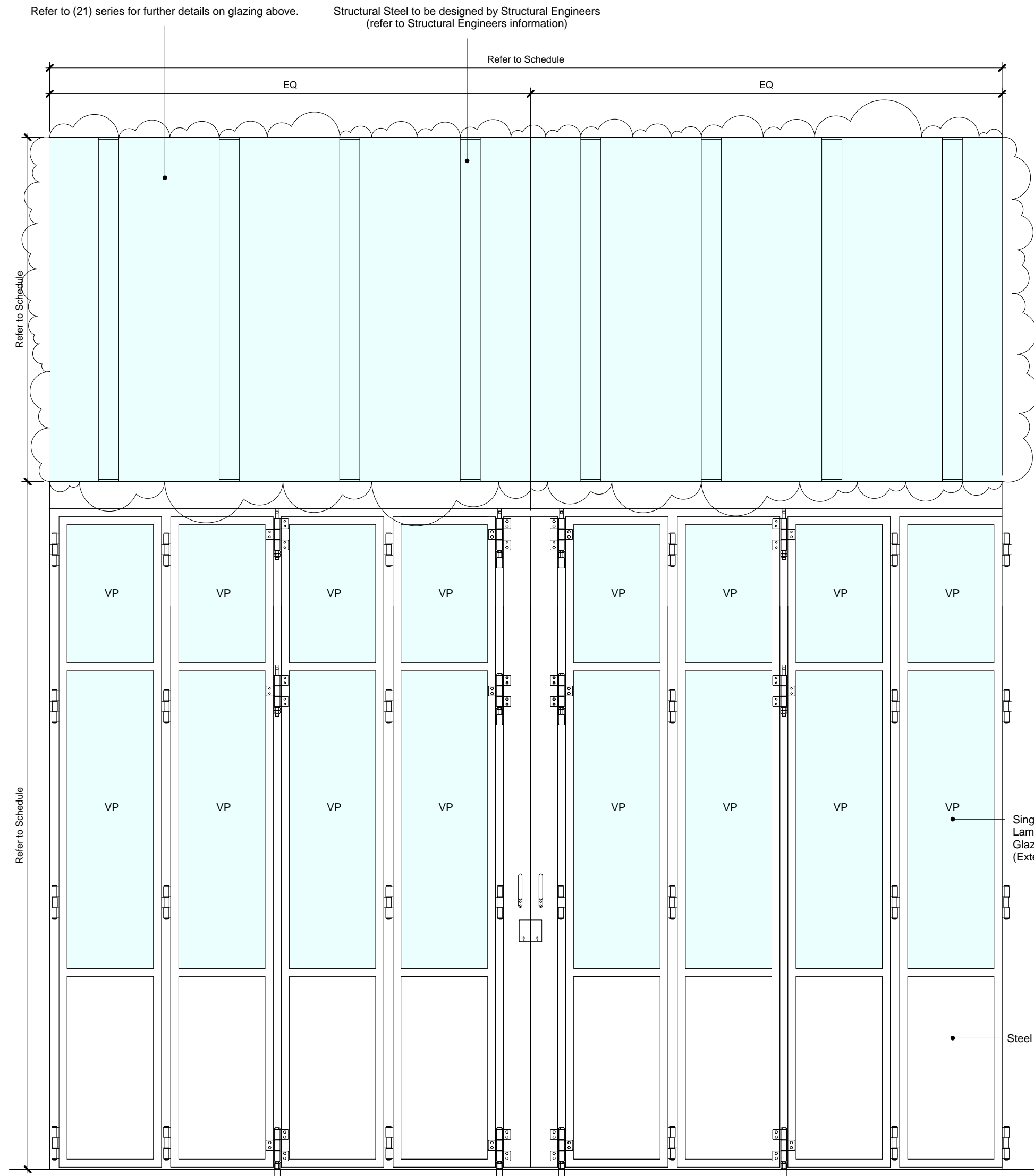
Fire Rating: N/A
Security: Cylinder Lock (External Doors to have lockable shootbolt)
Notes: To be coordinated with Landscape Levels.



NBS Reference: DT19 (L20/530C)

NBS Description: Folding Retail Door (Full Height)
Door Type: DT19
Opening Direction: Sliding/Folding
Ironmongery: Refer to schedule

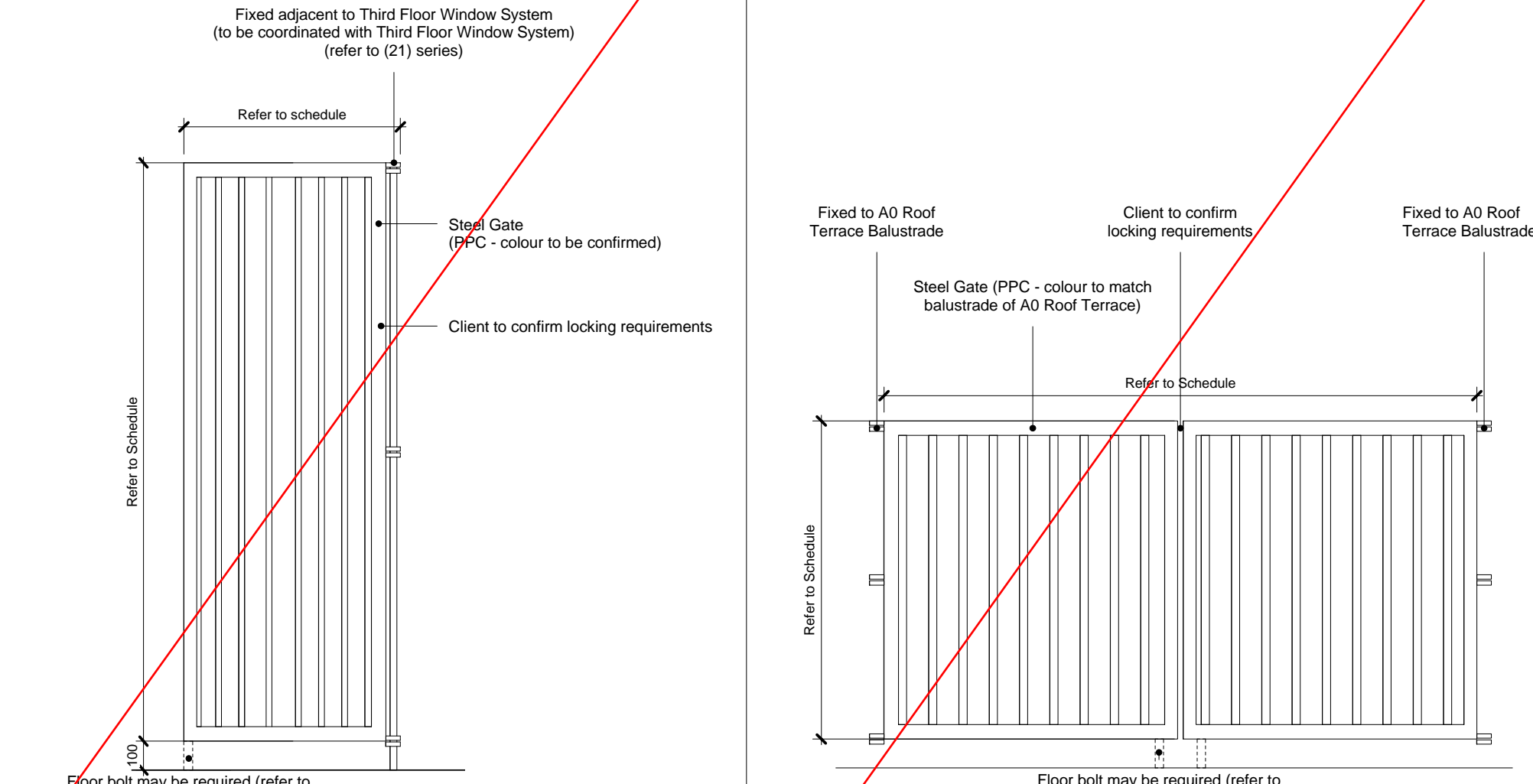
Fire Rating: N/A
Security: Cylinder Lock (External Doors to have lockable shootbolt)
Notes: To be coordinated with Landscape Levels.



NBS Reference: DT16 (L20/530B)

NBS Description: Folding Retail Double Height
Door Type: DT16
Opening Direction: Sliding/Folding
Ironmongery: Refer to Schedule

Fire Rating: N/A
Security: Cylinder Deadlock + Floor bolt
Notes: Doors to be full height in perimeter/external locations.
Refer to Door Schedule, AX_(32)_4010 + AX_(32)_4011.
To be coordinated with External Landscape.



NBS Reference: DT17 (L20/620)

NBS Description: Roof Access Gate
Door Type: DT17
Opening Direction: Inward
Ironmongery: Refer to Schedule

Fire Rating: N/A
Security: Access for Maintenance.
Notes: Refer to (21) series

NBS Reference: DT18 (L20/621)

NBS Description: Roof Terrace Gate (A0)
Door Type: DT18
Opening Direction: Inward
Ironmongery: Refer to Schedule

Fire Rating: N/A
Security: To landlords requirements
Notes: Planning Conditions to be met.

KEY

Refer to Door Schedule for dimensions and requirements.

Market Shutters to be tenant fit out (excluding those tagged within the (32) series).

Riser doors/access panels TBC

All service penetrations from risers to be fire stopped

VP Vision Panel

Sign as required by schedule

Door Closer

Hinge

Hinge Opening

NOTE

For individual door information: Refer to AX_(32)_0011-30 Door Schedule

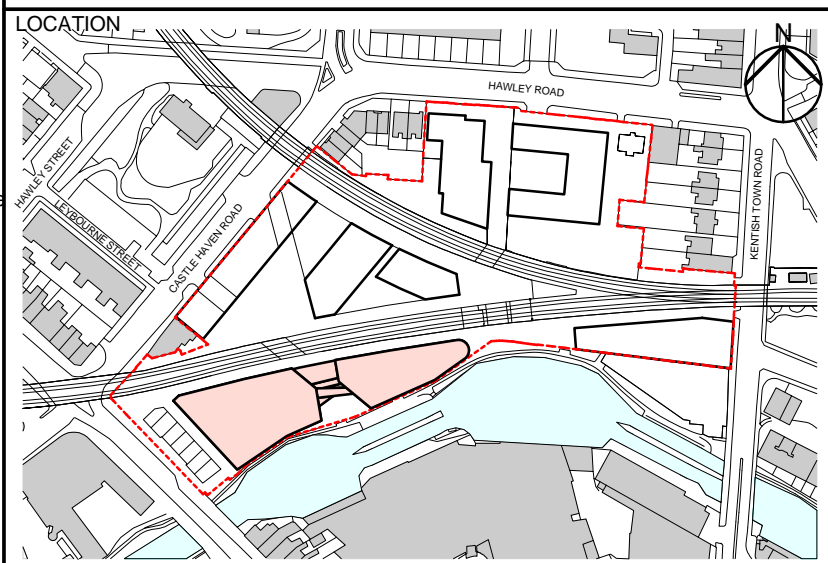
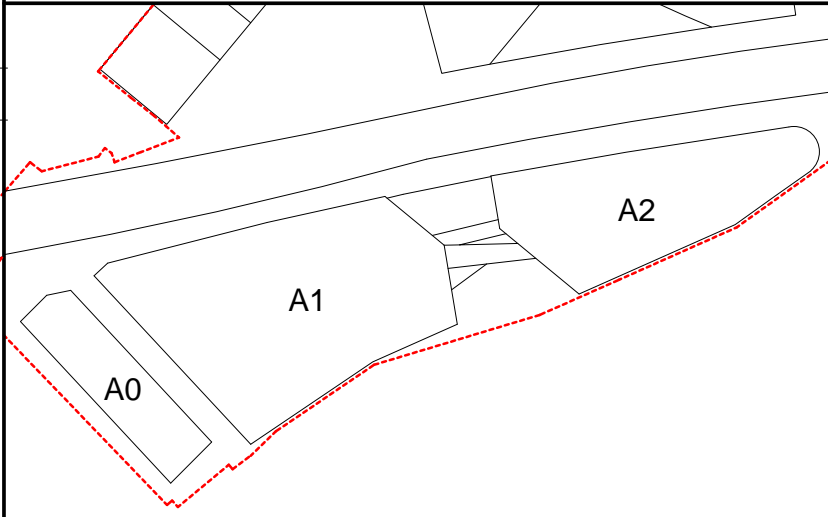
Ironmongery: Set out as per door elevation

F03	28/10/16	Stage F - For Coordination
F02	07/10/16	Stage F - For Coordination
F01	22/07/16	Stage F - For Coordination
REV	DATE	DESCRIPTION

CONSULTANTS

CLIENT:	Stanley Sidings
CONTRACTOR:	Mace Group
STRUCTURAL ENGINEER:	Walsh Group
MECHANICAL ENGINEER:	AECOM
COST CONSULTANT:	Gardiner & Theobald
PROJECT MANAGER:	Gardiner & Theobald
ACOUSTIC CONSULTANT:	Arup
TRANSPORT CONSULTANT:	Arup
PLANNING CONSULTANT:	Gerald Eve
LANDSCAPE ARCHITECT:	Fabrik
CDM CO-ORDINATOR:	Gardiner & Theobald

- NOTE
1. Do not scale from this drawing.
 2. All dimensions to be checked on site by the contractor and such dimensions to be his responsibility.
Report all drawing errors, omissions and discrepancies to the architect.
 3. This document may be issued in an uncontrolled CAD format to enable others to use it as background information to make alterations and/or additions. In that instance the file will be accompanied by a PDF version. It is for those making such alterations and additions to ensure that they make use of current background information.
 4. AHMM Ltd accepts no liability for any such alterations or additions to the background information or arising out of changes to background information which occur prior to alterations of additions being made.
- REFER TO TECHNICAL REFERENCE SHEET FOR SPECIFICATION CLAUSES
- DOCUMENT REFERENCE: 14045 A TRS



ALFORD HALL MONAGHAN MORRIS

ARCHITECTS Ltd

6-23 OLD STREET, LONDON, EC1V 9HL

TEL 020 7251 5261 FAX 020 7251 5123 WEB WWW.AHMM.CO.UK

job title

CAMDEN LOCK VILLAGE

drawing title / location

Door Elevation Matrix 2

drawn by	checked	scale	status
MP	FG	1 : 20 @ A1	For Coordination

project	drawing no.	revision
14045	AX_(32)_ 1021	F03