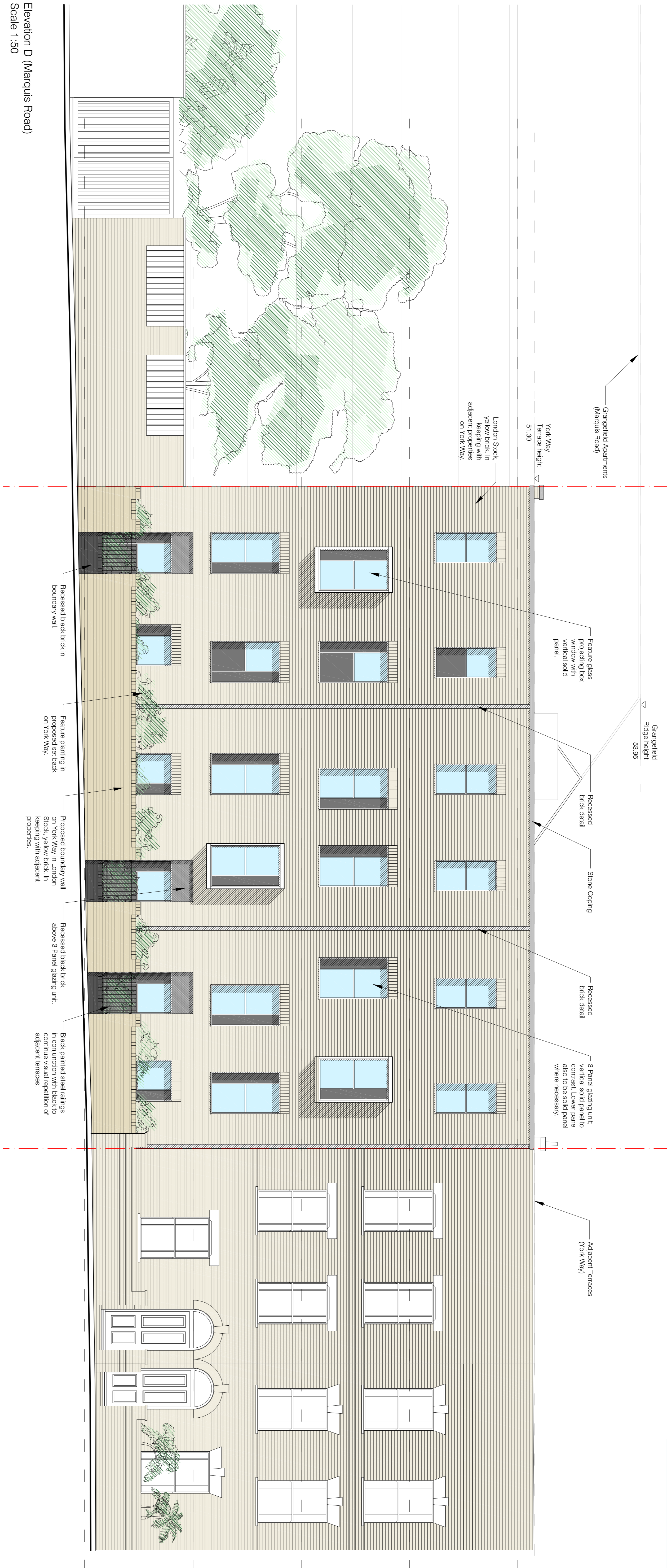
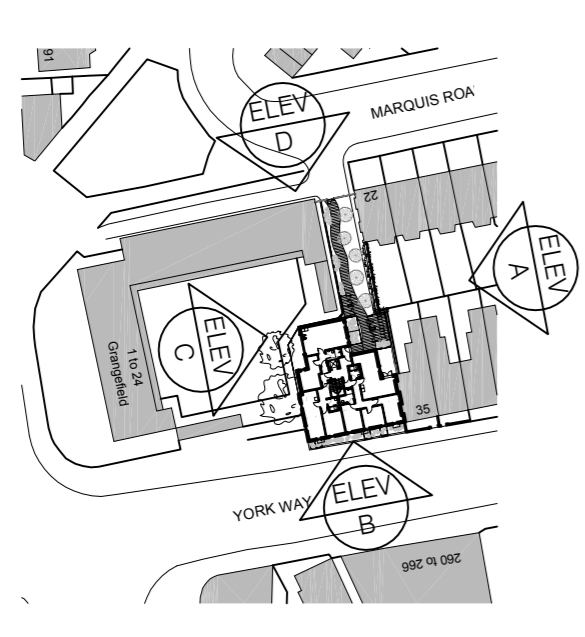


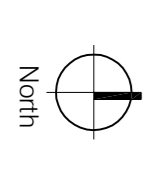
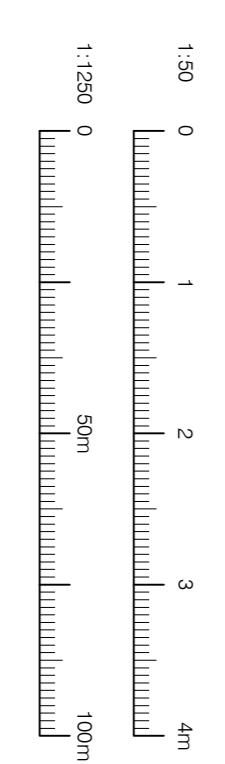
Rev	Date	Details	Quantity
A	01/09/15	Updated as per Planners comments.	JW
B	20/10/15	Box windows retained in line with planners comments.	JW
C	12/04/16	Planners comments: In-line with planners comments changed to glass based on the increased site context, new window arrangement.	JW
D	27/04/16	Planners comments: In-line with planners comments. Elevations adjusted all Ground Floor windows to be set back in response to amended Ground Floor layout on York Way. Storage in response to amended Planning requirements.	SH
E	21/10/16	Revised to suit Newark Planning comments.	SH
F	22/11/16	Revised to suit Newark Planning comments.	SH
G	11/01/17	Revised to suit Conservation Officers comments.	SH



Elevation D (Marquis Road)  
Scale 1:50



Site Plan  
Scale 1:1250



Client name		The Prosperity Group Ltd	
Address		York Way Cardon London N7	
Project		Proposed Elevations East	
Date		15/04/15	
Drawn		JW	
Scale		Various @ A1	
Checked		KE	
Drawing number		(03) 15	
Revision		G	
Revision number		901-01	