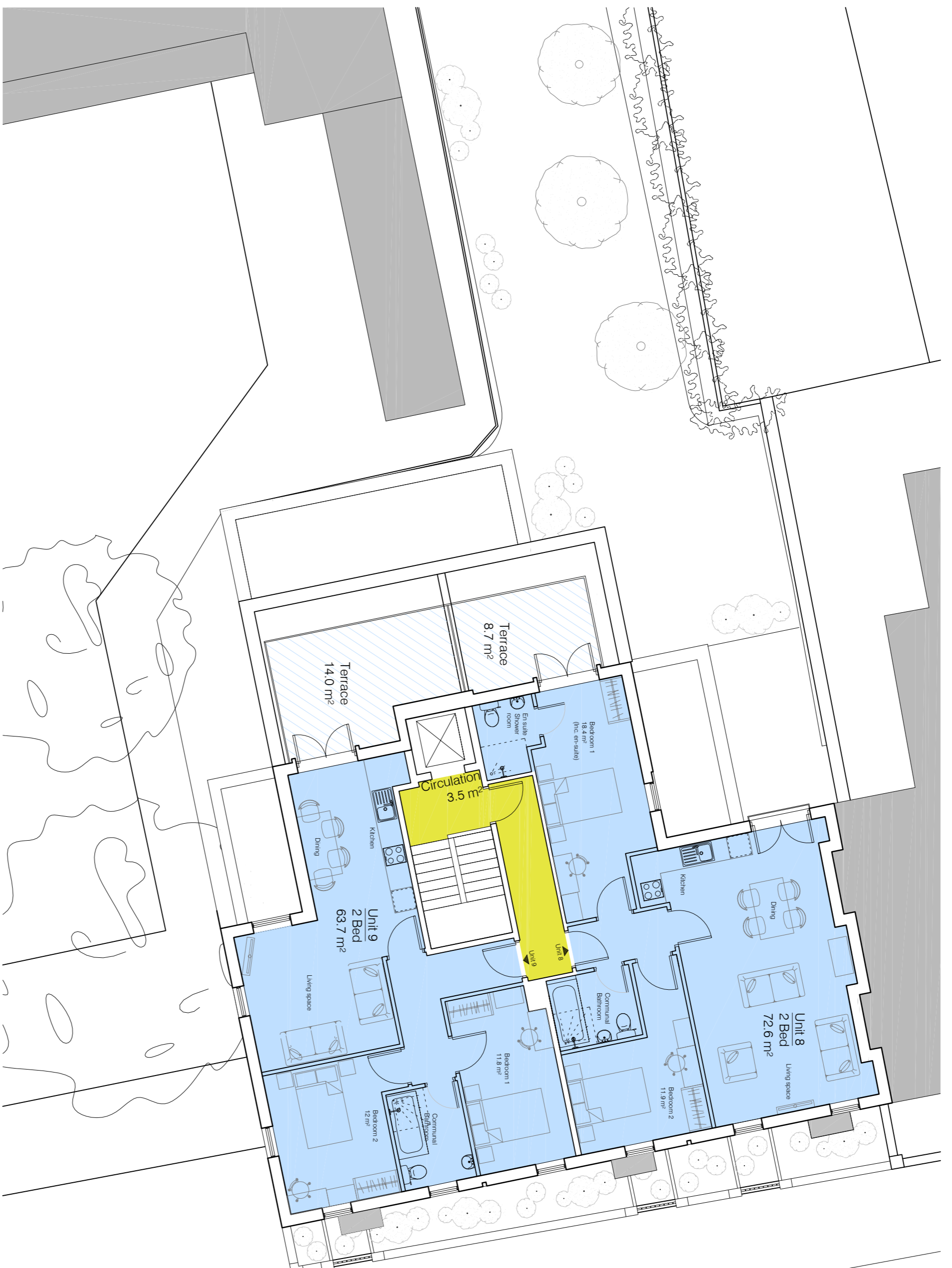
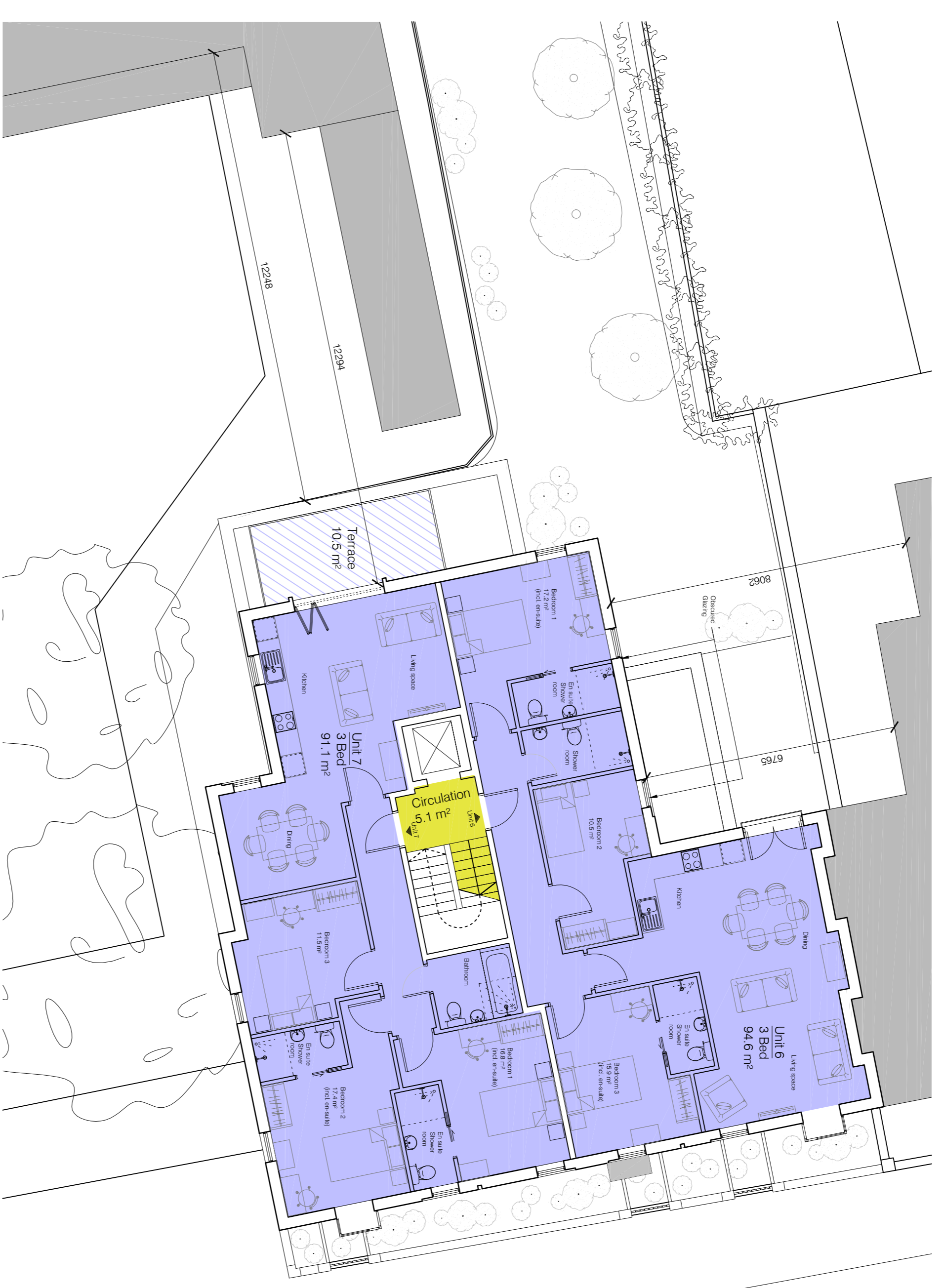


Rev	Date	Details	Drawn by
A	01/09/15	Box windows removed as per planning comments	JW
B	20/10/15	Box windows removed and replaced with alternative window frames	JW
C	06/04/16	Plans amended to incorporate signage	JW
D	12/04/16	Site Plan revised to incorporate landscaped terraces to York Way.	JW
E	27/04/16	Structural framed in response to Floor plan inputs amended further	JW
F	29/04/16	to client feedback to incorporate floor plan inputs amended further	JW
G	29/09/16	Revised to incorporate planning input	JG
H	21/10/16	Revised to suit Nevas Planning Part M and Accessible Standards	SH
J	22/11/16	Revised to suit Construction	SH
K	11/01/17	Officer comments Planning and Construction Officer comments	SH



Third Floor
Scale 1:100



Second Floor
Scale 1:100

Schedule of Accommodation

Floor	1 Bed	2 Bed	3 Bed	4 Bed	Total Units	Total Bedrooms
Ground Floor	2				2	5
First Floor		1	1		2	7
Second Floor		2	2		4	6
Third Floor		2	4	1	7	6
Total	2	2	4	1	9	22

Floor	1 Bed Area (m²) [min. 39m²/unit]	2 Bed Area (m²) [min. 61.70m²/unit]	3 Bed Area (m²) [min. 74.59m²/unit]	4 Bed Area (m²) [min. 90.137m²/unit]	Total Area (m²)	Circulation (m²)	Total Gross Internal Area (m²)
Ground Floor	104.7		93.1		197.8	15.3	213.1
First Floor			94.6		189.4	5.1	194.5
Second Floor		136.3	185.7		322.0	5.1	337.1
Third Floor		136.3	373.4	108.8	618.8	35.5	654.3
Total	104.7	136.3	373.4	108.8	723.2	35.5	858.4

Schedule of Accommodation

Floor	Unit	1 Bed	2 Bed	3 Bed	4 Bed	Terrace	Total Area** (m²)
Ground Floor	1	Y				N	12.0
Ground Floor	2		Y			N	14.6
First Floor	3			Y		N	-
First Floor	4				Y	N	-
Second Floor	5					N	-
Second Floor	6			Y		N	-
Second Floor	7				Y	N	-
Third Floor	8		Y			Y	10.5
Third Floor	9		Y			Y	12.0
Total	9	2	2	2	4	1	59.8

Schedule of Accommodation

Floor	Unit	1 Bed	2 Bed	3 Bed	4 Bed	Terrace	Total Area** (m²)
Ground Floor	1	Y				N	12.0
Ground Floor	2		Y			N	14.6
First Floor	3			Y		N	-
First Floor	4				Y	N	-
Second Floor	5				Y	N	-
Second Floor	6			Y		N	-
Second Floor	7				Y	N	-
Third Floor	8		Y			Y	10.5
Third Floor	9		Y			Y	12.0
Total	9	2	2	2	4	1	59.8

