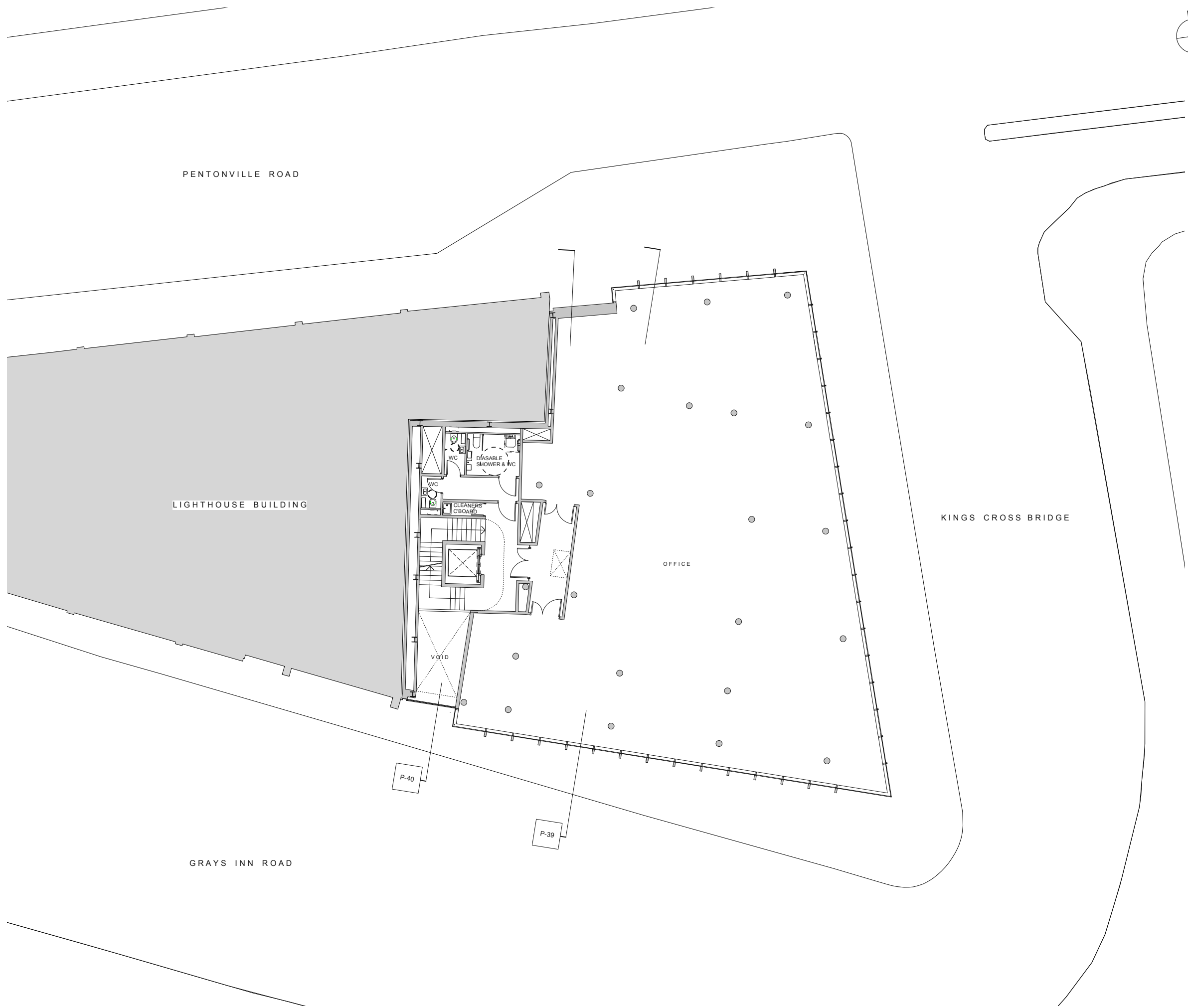


GENERAL NOTES
 Drawing to be read in conjunction with all information by architects, structural engineer & service consultants.
 The contractor is not to scale from this drawing. All written dimensions to be checked on site before work commences. Discrepancies, where identified, must be reported to the architect immediately.
 This drawing is the property of Latitude Architects and Designers and must not be reproduced or disclosed to any unauthorised person either wholly or in part without written consent.

NOTE:
 ALL AREAS ARE INDICATIVE AND CONTINGENT ON DESIGN TEAM COMMENTS AND SUBSEQUENT DEVELOPMENT.

AREAS:

| | | |
|--|--|--|
| OFFICE GEA- 525 M ² . | OFFICE GIA- 485 M ² . | OFFICE NIA- 413 M ² . |
|--|--|--|



| Issue | Chkd | Drawn | Date | Description |
|-------|------|-------|----------|--|
| E | AV | BM | 20/02/17 | MMA Issue. Reception Facade Revised |
| D | AV | BM | 27/01/17 | WC layout revised. |
| C | AG | AV | 06/01/17 | Issued for revised Stage 3 and MMA application |
| B | AG | AV | 04/11/16 | Primary circulation stair, riser locations and WC layout revised. Internal Office stair removed. |
| A | AG | AV | 22/11/13 | Issued for Planning |

| | | | |
|----------|---------|----------|-------|
| Status | Job No. | Drwg No. | Issue |
| PLANNING | 1209 | P32 | E |

Drawing 1:200@A3 1:100@A1

PROPOSED FIRST FLOOR PLAN
 Project
 KINGS CROSS BRIDGE
 LONDON WC1X